

DSS4004 Platform Initialization User's Manual

V1.0.0

Table of Contents

1	OPEN PACKAGE INSPECTION	1
1.1	Steps of Inspection	1
1.2	Front Panel.....	1
1.3	Rear Panel	1
2	INITIALIZATION SETUP	3
2.1	System IP Address	3
2.2	Master/Slave Mode and Disk Storage	6

Welcome

Thank you for using our platform!

This initialization user's manual is designed to be a reference tool for the installation and operation of your system.

Before installation and operation please read the following safeguards and warnings carefully!

Please keep it for future reference!

Important Safeguards and Warnings

1 . Electrical safety

All installation and operation here should conform to your local electrical safety codes. We assume no liability or responsibility for all the fires or electrical shock caused by improper handling or installation.

2 . Transportation security

Heavy stress, violent vibration or water splash are not allowed during transportation, storage and installation.

3 . Installation

Keep upwards. Handle with care.

Do not apply power to the device before completing installation.

Do not place objects on the device.

4 . Qualified engineers needed

All the examination and repair work should be done by the qualified service engineers.

We are not liable for any problems caused by unauthorized modifications or attempted repair.

5 . Environment

The device should be installed in a cool, dry place away from direct sunlight, inflammable, explosive substances and etc.

This series product shall be transported, storage and used in the specified environments.

6. Lithium battery

Improper battery use may result in fire, explosion, or personal injury!

When replace the battery, please make sure you are using the same model!

7. Accessories

Be sure to use all the accessories recommended by manufacturer.

Before installation, please open the package and check all the components are included.

Contact your local retailer ASAP if something is broken in your package.

1 Open Package Inspection

1.1 Steps of Inspection

When you receive the device from the forwarding agent, you shall inspect as follows:

Step 1. Please check whether there is any visible damage.

Step 2. The protective materials used for the package of the device can protect most accidental clashes during transportation. Then you can open the box to check the accessories. Please check the items in accordance with the list.

Step 3. Finally you can remove the protective film of the device.

1.2 Front Panel

The front panel is shown as below. See [错误!未找到引用源。](#).

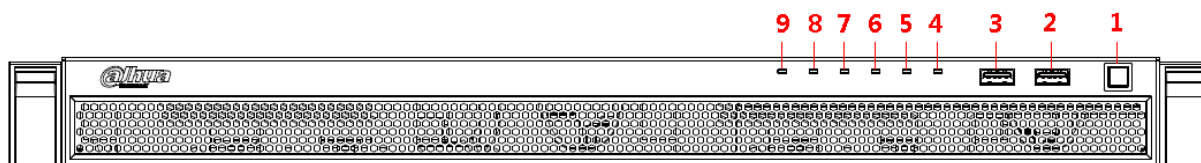


Figure 1- 1

Please refer to the following sheet for front panel button information.

SN	Name	Function
1	Power button	Press it to turn off the device.
2	USB port	/
3	USB port	/
4	HDD4	HDD indicator. HDD4 is blue light by default. If it turns red, there must be abnormality.
5	HDD3	HDD indicator.
6	HDD2	HDD indicator.
7	HDD1	HDD indicator.
8	Alarm Indicator	When device has alarm, alarm indicator turns on. If alarm indicator turns red, it means the temperature has gone over 80°C, or the fan does not work.
9	Network Indicator	When device connects to Internet, network indicator flashes blue. If network indicator turns red, there must be abnormality in connection.

1.3 Rear Panel

The rear panel is shown as in Figure 1- 2.

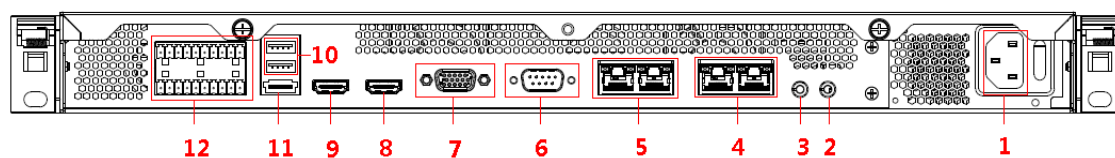


Figure 1- 2

Please refer to the following sheet for rear panel button information.

SN	Function	SN	Function
1	Power socket	7	Video VGA output
2	Audio output	8	HDMI1
3	Audio input	9	HDMI2; reserved, not open by default.
4	Network 1-2	10	USB port
5	Network 3-4	11	eSATA port
6	RS232 convertor	12	Alarm input, alarm output

2 Initialization Setup

Before you use the platform, please follow the steps listed below to set the initialization information.

2.1 System IP Address

Before you use the platform, please set system IP address.

DSS4004 default IP address:

- port 1:192.168.1.108
- port 2:192.168.2.108
- port 3:192.168.3.108
- port 4:192.168.4.108

DSS4004 has local setting and WEB setting two methods

2.2 Local setting

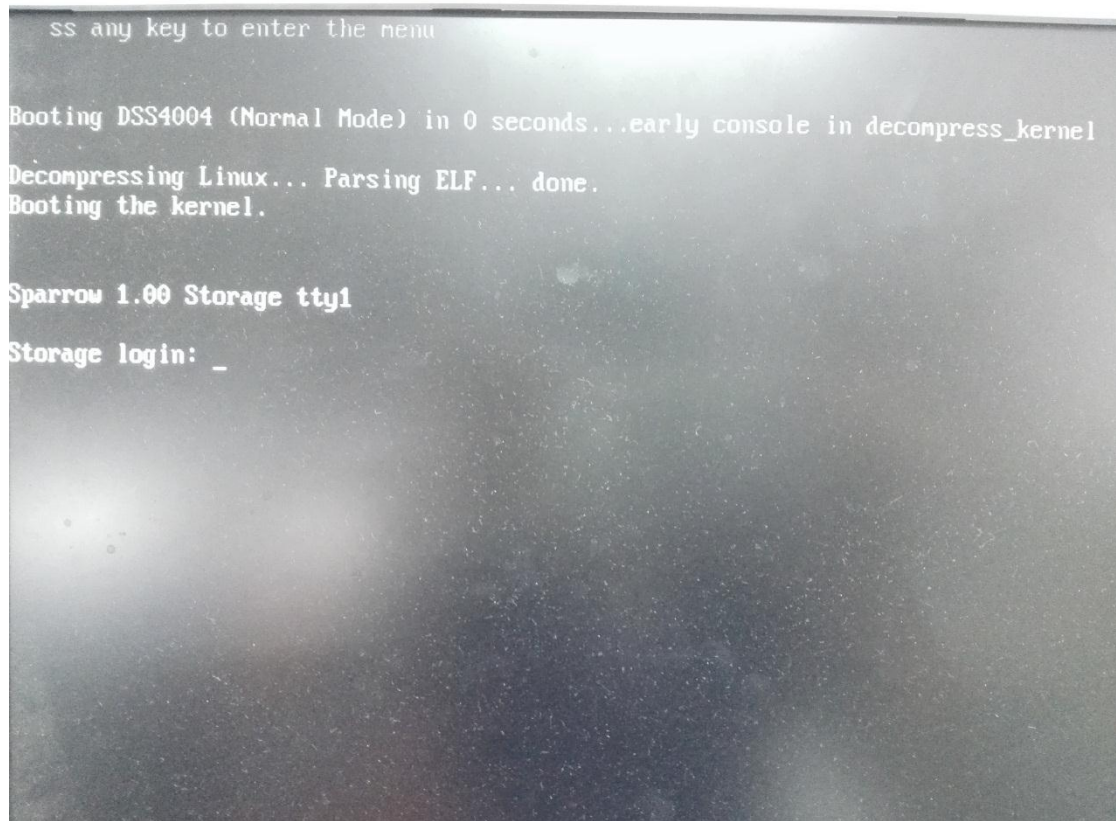
Steps for local setting operation are listed below:

Step 1. Connect VGA(or HDMI) monitor.

Step 2. Enter login username and password,

(and login, username: root , initial password is dahua2006)

enter initialization config interface.



Step 3. Press 【 ↓ 】 button, select 2 Network Configuration, and press Enter. See Figure 2- 1.

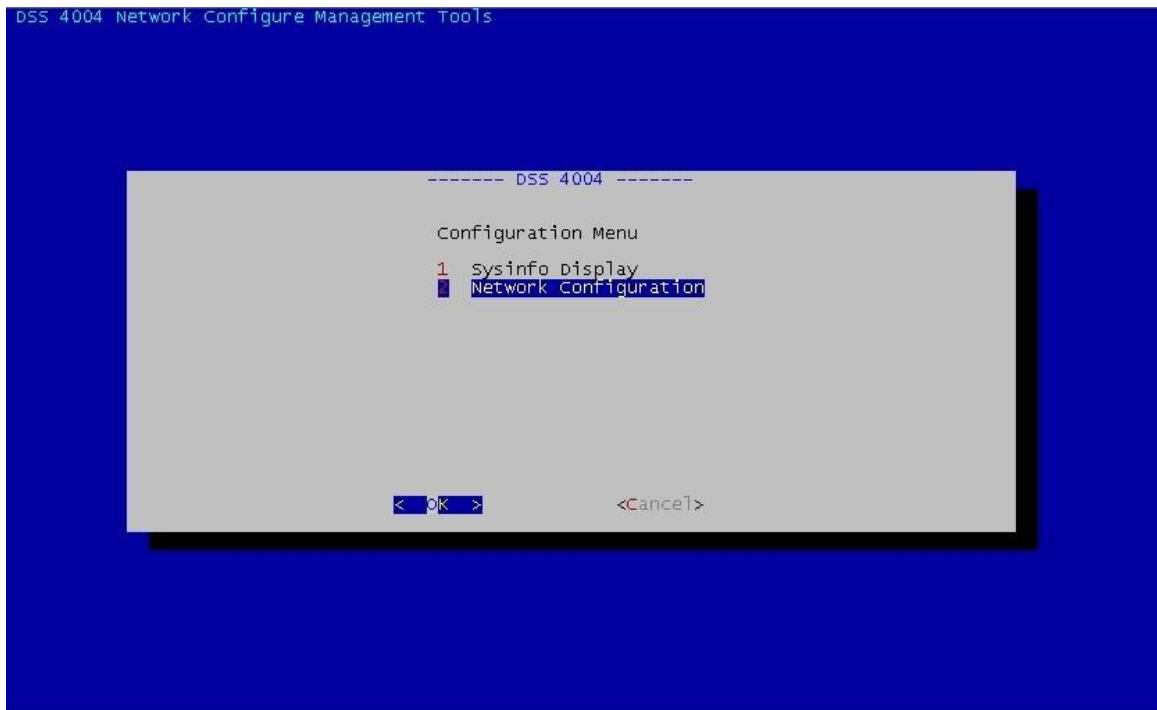


Figure 2- 1

Step 4. Press **【 ↓ 】** button, move cursor to 2 Set Network Card Info, and press Enter. See Figure 2- 2.

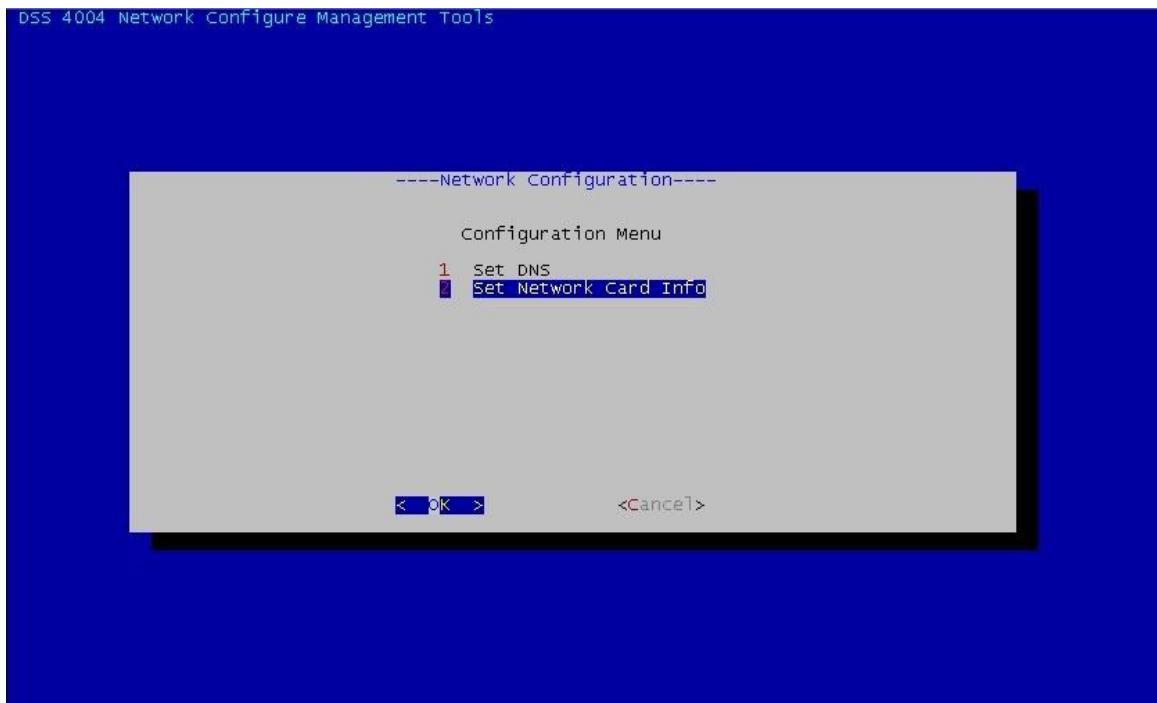


Figure 2- 2

Step 5. Press **【 ↓ 】** , you shall select port to configure.
Eth0 corresponds to port 1, eth1 corresponds to port 2 and so on. Select port, and press Enter. See Figure 2- 3.

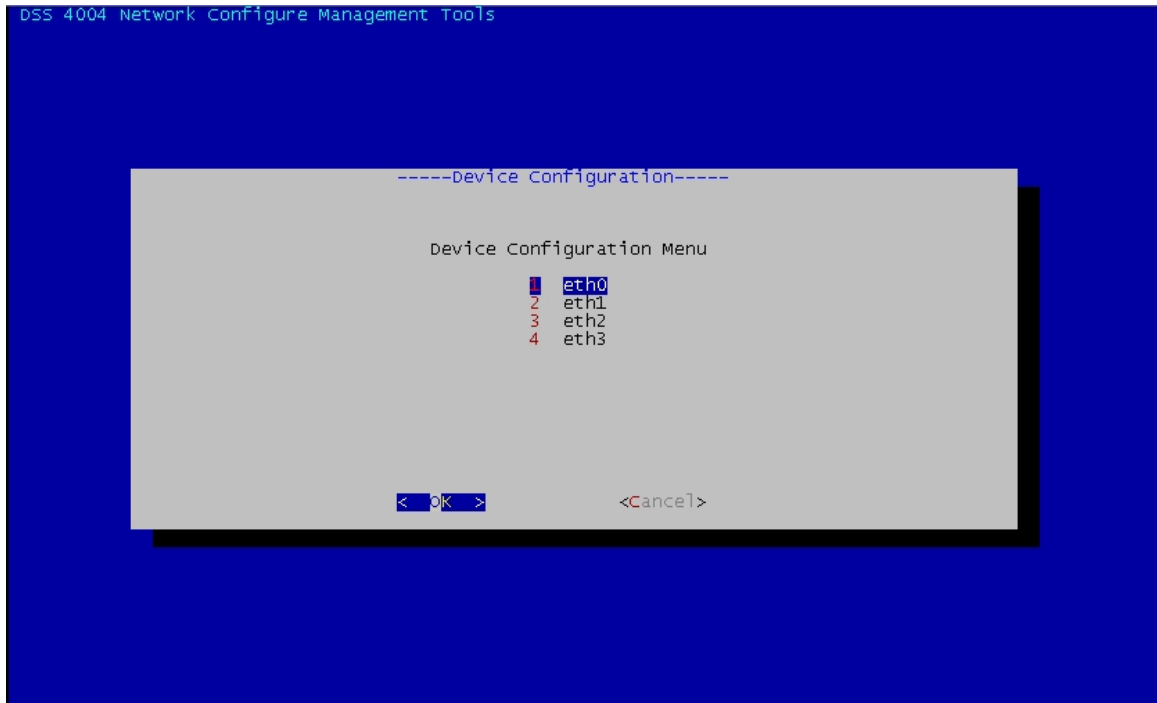


Figure 2- 3

Step 6. Enter IP address. See Figure 2- 4.

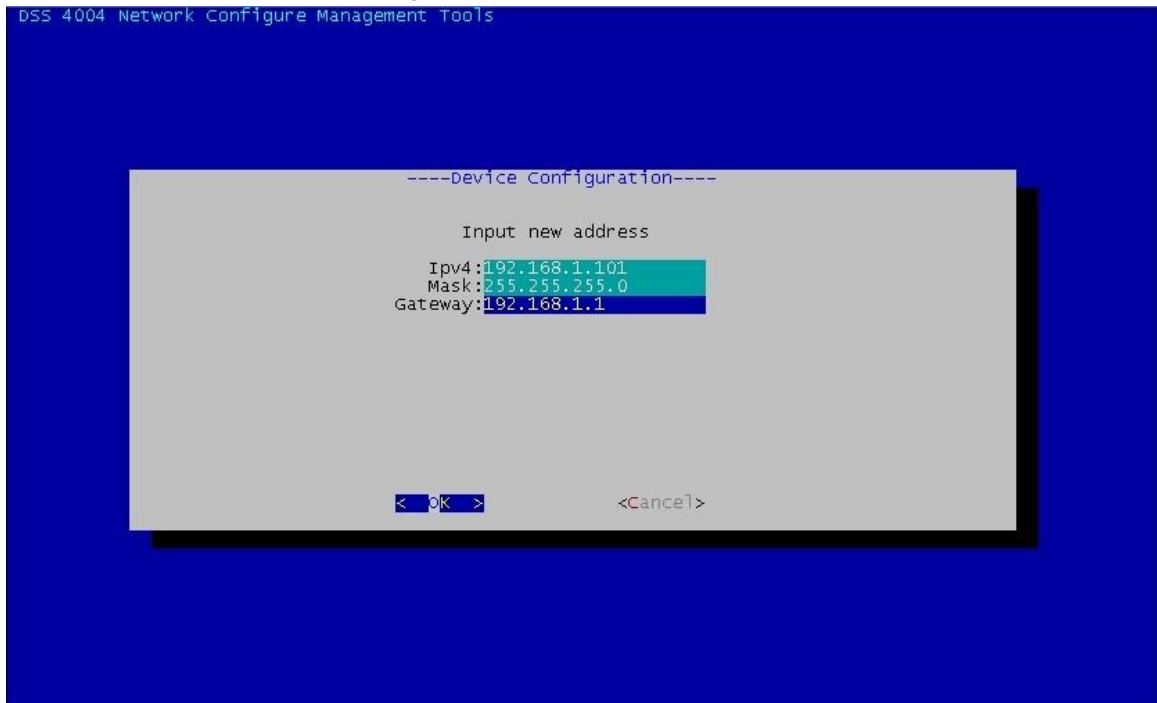


Figure 2- 4

Step 7. Press **【Tab】** button, move cursor to <OK>, and press Enter.

A pop-up window shows "Save network configuration?", select OK to save. The IP configuration is now complete.

2.3 Web setting

Step 1. Please input the IP address followed by “/config “on the IE and then click Enter button. System pops up the following dialogue box. See Figure 2- 6.

Such as: <http://192.168.1.108/config>

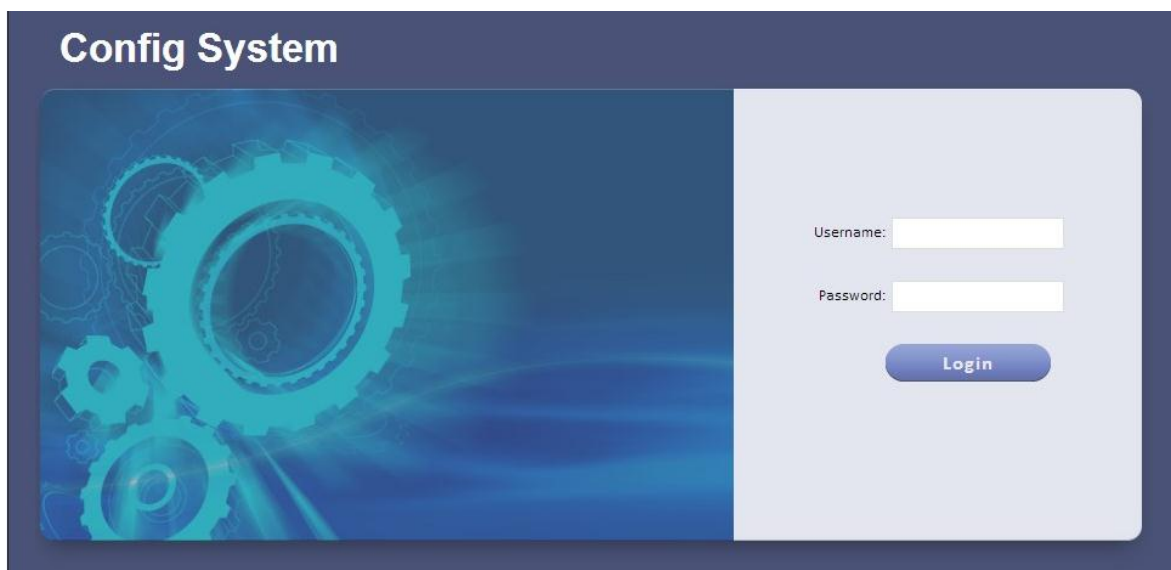
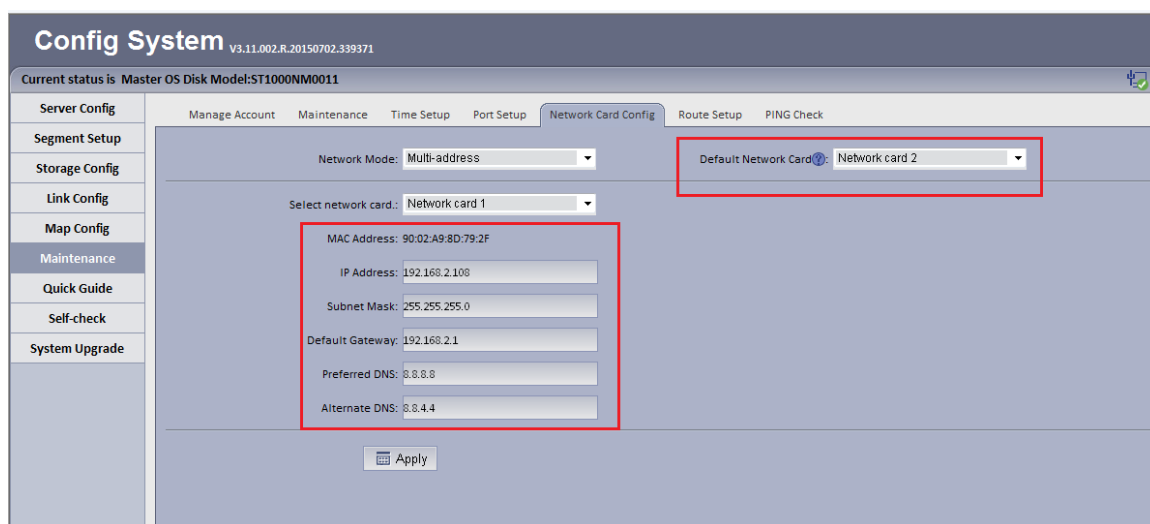


Figure 2- 5

Step 2. Please input user name and password. System default user name is **admin** and password is **123456**

Step 3. Select Maintenance, and can modify the IP Address, then Apply.



2.4 Master/Slave Mode and Disk Storage

After you set platform system time, IP address and network mode, please access the platform via a PC to set master/slave mode and disk storage setup.

Please follow the steps listed below.

Step 4. Please input the IP address you set in chapter 2.1 followed by “/config “on the IE and then click Enter button. System pops up the following dialogue box. See Figure 2- 6.

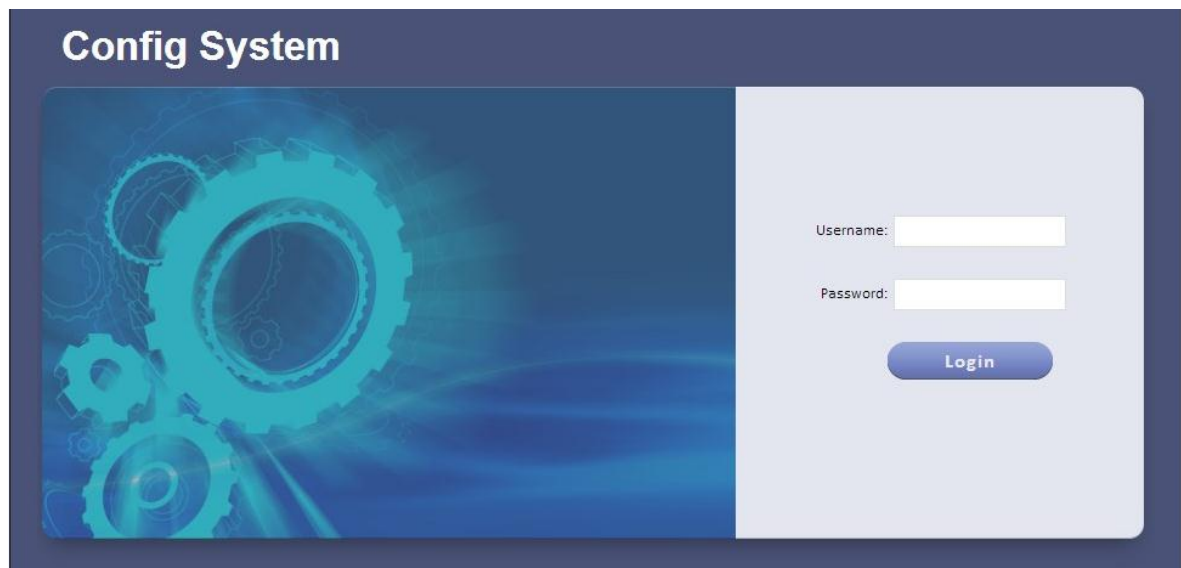


Figure 2- 6

Step 5. Please input user name and password. System default user name is **admin** and password is **123456**.

Step 6. Click Login. You will see Figure 2- 7.

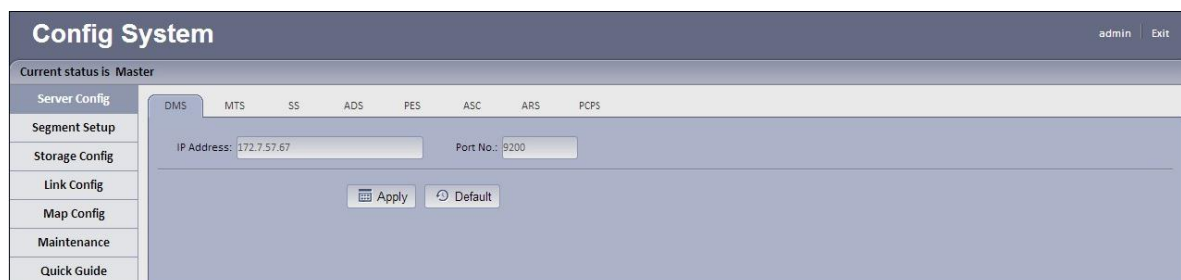


Figure 2- 7

Step 7. Quick guide.

- **Master Mode**

- Select Quick Guide tab. See Figure 2- 8.

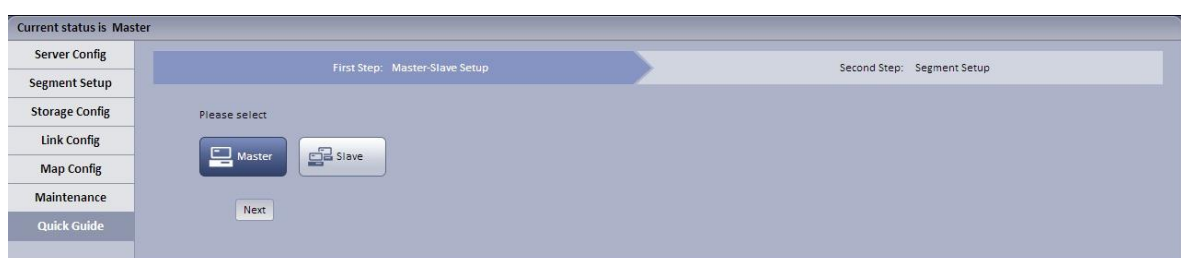


Figure 2- 8

- ii. Select “Master”, click Next. System shows Segment Setup interface. See Figure 2- 9.

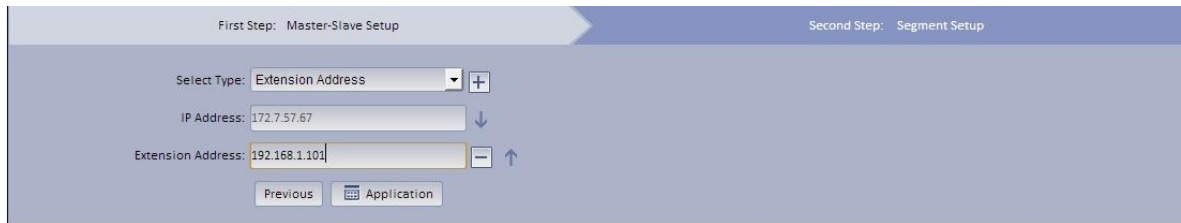


Figure 2- 9





- iii. Set parameter.
 - Click  or  to increase/decrease parameter.
 - Click  or  to adjust position of parameter.
- iv. Click Application.
- **Slave Mode**
 - i. Click “Slave”. See Figure 2- 10.



Figure 2- 10

- ii. Input Master Server IP, click Next. System shows Segment Setup interface. See Figure 2- 11.

Note:

Input master server IP for registration from slave mode to master mode.

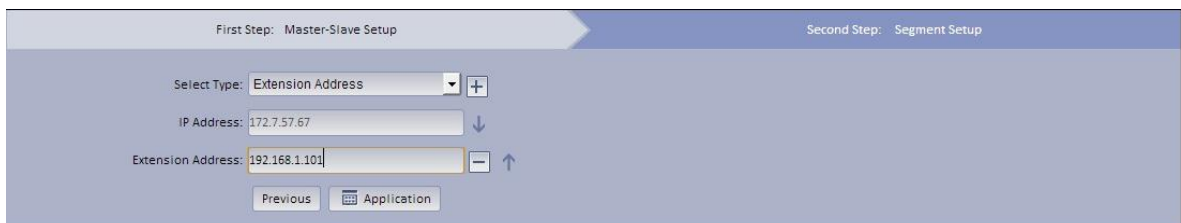


Figure 2- 11

- iii. Select Type, click Application.
- Step 8. System maintenance.
- i. Select Maintenance>Account tab, manage user account/password.
 - ii. Select Maintenance>Maintenance tab, switch master-slave mode, shutdown, reboot and restore default.
 - iii. Select Maintenance>Net Card tab, configure network mode, net card, IP address

and etc.

- iv. Select Maintenance>Time Setup tab, set time zone, date and time.
- v. Select Maintenance>Port tab, set server port for WEB.
- vi. Select Maintenance>Router tab, you can manually add static router.

Step 9. Server config.

It mainly sets device, MTS, SS, ADS, PES and etc.

Step 10. Segment setup.

Select extension address or mapping address, click Application to set segment. See Figure 2- 12.



Figure 2- 12

Step 11. Storage config.

There are local disk and network disk two storage methods.

- i. Select Storage Config>Local Disk interface, you can refresh, format disk and perform other operations.
- ii. Select Storage Config>Network Disk interface, you can add, format, refresh disk and perform other operations.

Step 12. Link config.

Select Link Config>Mail Link interface. See Figure 2- 13. When you configure alarm scheme at Master-end, select main link and set main receiver. If alarm occurs, an email will be sent to that email address.



Figure 2- 13

- i. Configure parameter, click Application. SMTP server's listening port is 25 by

default.

- ii. Check Enable.

Step 13. Map config.

The system supports super map, raster map, google map and google offline map.

- i. Select Super Mpa, and set its parameter. Click Application. See Figure 2- 14.

The screenshot displays a configuration window for map services. At the top, 'Map Selection' has four radio buttons: 'Super Map' (selected), 'Raster Map', 'Google', and 'Google Offline Map'. Below this, there are three text input fields: 'Map Engine Path' with the value 'http://10.33.7.138:8090/iserver/service...', 'Map Shortest Path Analysis Server' with the value 'http://10.33.7.138:8090/iserver/service...', and 'Map Engine WAN IP' with the value '10.33.7.138'. A section titled 'Longitude and Latitude Setup' contains two text input fields: 'Longitude' with the value '120.178299258353' and 'Latitude' with the value '30.1892863586331'. A section titled 'Map Zoon Setup' contains four text input fields: 'Map Initial Zoon Level' with the value '14', 'Map Spot Display Level' with the value '14', 'Min Map Display Level' with the value '3', and 'Max Map Display Level' with the value '21'. At the bottom center, there is an 'Apply' button with a small icon to its left.

Figure 2- 14

- ii. Select Raster Map. Click Application.
- iii. Select google, and set its parameter. Click Application.

Note:

When you add google map, please ensure DSS4004 platform client connect to the Internet, while LAN is OK.

See Figure 2- 15.

Map Selection: Super Map Raster Map Google Google Offline Map

Longitude and Latitude Setup

Longitude:

Latitude:

Map Zoon Setup

Map Initial Zoom Level:

Map Spot Display Level:

Min Map Display Level:

Max Map Display Level:

Figure 2- 15

- iv. Select google offline map, and set its parameter. Click Application. See Figure 2- 16.

Map Selection: Super Map Raster Map Google Google Offline Map

Map Engine Path:

Map Engine WAN IP:

Longitude and Latitude Setup

Longitude:

Latitude:

Map Zoon Setup

Map Initial Zoom Level:

Map Spot Display Level:

Min Map Display Level:

Max Map Display Level:

Figure 2- 16

3 WEB Manager

You can refer to the following steps to login DSS manager.

Note: Details please see the document “DSS Client User's Manual” and “ DSS Manager User's Manual”

Step 1. In Internet Explorer, input IP address of DSS, press Enter. You will see Figure 3- 1.

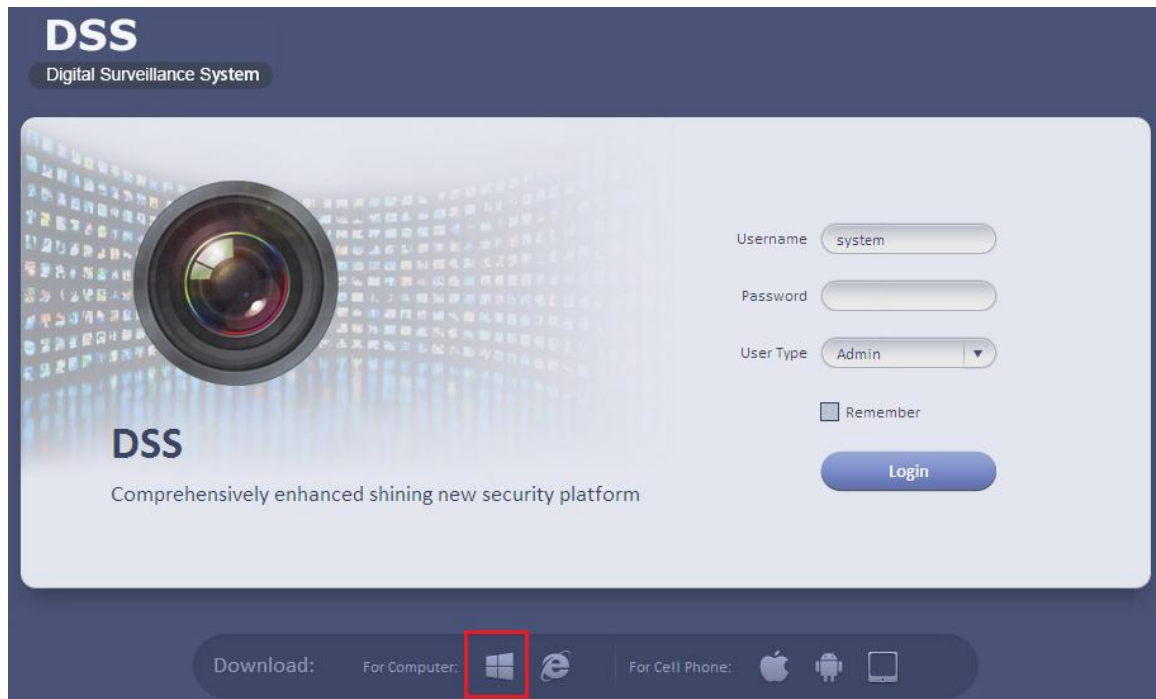


Figure 3- 1

Note:

You can download DSS Client on this login page. If it is your first time login DSS Manager, please add its IP address into the trusted site of your explorer.

Step 2. Input Username and Password. Default username is: **system**. Default password is: **123456**

For security reason, please change your login password after you first login. Password can contains number, letter, underline and other symbols.

Click Login.

Note:

- This user’s manual is for reference only. Slight difference may be found in the user interface.
- All the designs and software here are subject to change without prior written notice.
- All trademarks and registered trademarks mentioned are the properties of their

respective owners.

- **If there is any uncertainty or controversy, please refer to the final explanation of us.**
- **Please visit our website or contact your local retailer for more information.**