

# CCTV PRODUCTS & IP SOLUTIONS PORTFOLIOS



## Network Camera

### • Ultra-Smart

#### IPC-HF81200E



#### 4K Ultra HD Network Camera

- 1 /2.3" 12Mp CMOS
- Smart triple streams supported
- Max 25/30fps@4K(3840×2160)
- Ultra Defog, ROI, EIS,ABF
- Smart detection: Face/Tripwire/Intrusion/ Scene change detection
- D&N(ICR),Ultra 3D-DNR, Micro SD
- DC12V/AC24V, PoE
- Material: Metal

#### IPC-HF8281E



#### 2MP Starlight Network Camera

- 1 /1.9" 2Mp CMOS
- Smart triple streams supported
- Max 50/60fps@1080P
- Ultra Defog, ROI, EIS,ABF,WDR(up to 120dB)
- Smart detection: Face/Tripwire/Intrusion/ Scene change detection
- Intelligent detection: people counting/heat map
- D&N(ICR),Ultra 3D-DNR, Micro SD
- DC12V/AC24V, PoE
- Material: Metal

#### IPC-HFW81200E

**NEW**



#### 4K Ultra HD Network IR-Bullet Camera

- 1 /2.3" 12Mp CMOS
- Smart triple streams supported
- Max 25/30fps@4K(3840×2160)
- Ultra Defog, ROI, EIS
- Smart detection: Face/Tripwire/Intrusion/ Scene change detection
- D&N(ICR),Ultra 3D-DNR, Micro SD
- DC12V, PoE
- Material: Metal

#### IPC-HFW8281E-Z



#### 2MP Starlight Network IR-Bullet Camera

- 1 /1.9" 2Mp CMOS
- Smart triple streams supported
- Max 50/60fps@1080P
- Min. Illumination: 0.005Lux/F1.65(Color)
- Ultra Defog, ROI, EIS, WDR(up to 120dB)
- Smart detection: Face/Tripwire/Intrusion/ Scene change detection
- Intelligent detection: people counting/heat map
- D&N(ICR),Ultra 3D-DNR, Micro SD, IR LEDs: 30m
- IP66, DC12V(AC24V optional), PoE
- Material: Plastic (upper cover)+ Metal (the rest)

#### IPC-HDBW81200E

**NEW**



#### 4K Ultra HD Network IR Dome Camera

- 1 /2.3" 12Mp CMOS
- Smart triple streams supported
- Max 25/30fps@4K(3840×2160)
- Ultra Defog, ROI, EIS
- Smart detection: Face/Tripwire/Intrusion/ Scene change detection
- D&N(ICR),Ultra 3D-DNR, Micro SD
- DC12V(AC24V Optional), PoE
- Material: Metal

#### IPC-HDB(W)8281-Z



#### 2MP Starlight Network (IR) Dome Camera

- 1 /1.9" 2Mp CMOS
- Smart triple streams supported
- Max 50/60fps@1080P
- Min. Illumination: 0.005Lux/F1.65(Color)
- Ultra Defog, ROI, EIS, WDR(up to 120dB)
- Smart detection: Face/Tripwire/Intrusion/ Scene change detection
- Intelligent detection: people counting/heat map
- D&N(ICR),Ultra 3D-DNR, Micro SD, IR LEDs: 20m(HDBW)
- IP66, IK10, DC12V/AC24V, PoE
- Material: Metal

#### IPC-EBW81200



#### 4K Ultra HD Network Vandal-proof IR Fisheye Camera

- 1 /2.3" 12Mp CMOS
- Smart triple streams supported
- Max 15fps@12M, 25/30fps@3M
- DWDR, ROI, AWB, AGC, BLC
- Smart detection: Tripwire/Intrusion detection
- Intelligent detection: heat map
- D&N(ICR), Ultra 3D-DNR, Micro SD
- Max. IR LEDs Length 15m
- IP67, IK10, DC12V, PoE
- Material: Metal

#### IPC-EBW8600



#### 6M Full HD Network Vandal-proof IR Fisheye Camera

- 1 /1.8" 6Mp CMOS
- Smart triple streams supported
- Max 25/30fps@6M(3072x2048)
- DWDR, ROI, AWB, AGC, BLC
- Smart detection: Tripwire/Intrusion detection
- Intelligent detection: heat map
- D&N(ICR), Ultra 3D-DNR, Micro SD
- Max. IR LEDs Length 15m
- IP67, IK10, DC12V, PoE
- Material: Metal

#### IPC-HUM8101



#### 1.3MP HD Network pinhole Camera

- 1 /3" 1.3Mp CMOS
- Smart triple streams supported
- Max 25/30fps@1.3M
- Ultra Defog, ROI, EIS, WDR(up to 100dB)
- Smart detection: Face/Tripwire/Intrusion/ Scene change detection
- Intelligent detection: people counting/heat map
- D&N(ICR), Ultra 3D-DNR, Micro SD
- DC12V, PoE
- Material: Metal

### • Eco-savvy

#### IPC-HF5421E

**NEW**



#### 4MP Full HD WDR Network Camera

- 1/3" 4Mp CMOS
- H.264 & MJPEG triple-stream encoding
- Max 20fps@4M, 25/30fps@3M
- D&N(ICR), 3D-DNR, Micro SD, WDR(up to 120dB)
- Smart detection: Face/Tripwire/Intrusion/ Scene change detection
- DC12V/AC24V, PoE
- Material: Metal

#### IPC-HF5221E

**NEW**



#### 2MP Full HD WDR Network Camera

- 1/2.7" 2Mp CMOS
- H.264 & MJPEG triple-stream encoding
- Max 25/30fps@1080P
- D&N(ICR), 3D-DNR, Micro SD, WDR(up to 120dB)
- Smart detection: Face/Tripwire/Intrusion/ Scene change detection
- DC12V/AC24V, PoE
- Material: Metal

#### IPC-HF5121E

**NEW**



#### 1.3MP HD WDR Network Camera

- 1/3" 1.3Mp CMOS
- H.264 & MJPEG triple-stream encoding
- Max 25/30fps@1.3M
- D&N(ICR), 3D-DNR, Micro SD, WDR(up to 120dB)
- Smart detection: Face/Tripwire/Intrusion/ Scene change detection
- DC12V/AC24V, PoE
- Material: Metal

## IPC-HFW5421E-Z

**NEW**



### 4MP Full HD WDR Network IR-Bullet Camera

- 1/3" 4Mp CMOS
- H.264 & MJPEG triple-stream encoding
- Max 20fps@4M, 25/30fps@3M
- motorized Lens: 2.7~12mm
- D&N(ICR), 3D-DNR, Micro SD, IR LEDs: 50m
- WDR(up to 120dB)
- Smart detection: Face/Tripwire/Intrusion/Scene change detection
- IP67, DC12V, PoE
- Material: Plastic (upper cover)+ Metal (the rest)

## IPC-HFW5221E-Z

**NEW**



### 2MP Full HD WDR Network IR-Bullet Camera

- 1/2.7" 2Mp CMOS
- H.264 & MJPEG triple-stream encoding
- Max 25/30fps@1080P
- motorized Lens: 2.7~12mm
- D&N(ICR), 3D-DNR, Micro SD, IR LEDs: 50m
- WDR(up to 120dB)
- Smart detection: Face/Tripwire/Intrusion/Scene change detection
- IP67, DC12V, PoE
- Material: Plastic (upper cover)+ Metal (the rest)

## IPC-HFW5220E-Z

**NEW**



### 2MP Full HD Network IR-Bullet Camera

- 1/2.8" 2Mp CMOS
- H.264 & MJPEG triple-stream encoding
- Max 25/30fps@1080P
- motorized Lens: 2.7~12mm
- D&N(ICR), 3D-DNR, Micro SD, IR LEDs: 50m
- Smart detection: Face/Tripwire/Intrusion/Scene change detection
- IP67, DC12V, PoE
- Material: Plastic (upper cover)+ Metal (the rest)

## IPC-HFW5121E-Z

**NEW**



### 1.3MP HD WDR Network IR-Bullet Camera

- 1/3" 1.3Mp CMOS
- H.264 & MJPEG triple-stream encoding
- Max 25/30fps@1.3M
- motorized Lens: 2.7~12mm
- D&N(ICR), 3D-DNR, Micro SD, IR LEDs: 50m
- WDR(up to 120dB)
- Smart detection: Face/Tripwire/Intrusion/Scene change detection
- IP67, DC12V, PoE
- Material: Plastic (upper cover)+ Metal (the rest)

## IPC-HDBW5421E-Z

**NEW**



### 4MP Full HD WDR Network Vandal-proof IR Dome Camera

- 1/3" 4Mp CMOS
- H.264 & MJPEG triple-stream encoding
- Max 20fps@4M, 25/30fps@3M
- motorized Lens: 2.7~12mm
- D&N(ICR), 3D-DNR, Micro SD, IR LEDs: 30m
- WDR(up to 120dB)
- Smart detection: Face/Tripwire/Intrusion/Scene change detection
- IP67, IK10, DC12V(AC24V optional), PoE
- Material: Metal

## IPC-HDBW5221E-Z

**NEW**



### 2MP Full HD WDR Network Vandal-proof IR Dome Camera

- 1/2.7" 2Mp CMOS
- H.264 & MJPEG triple-stream encoding
- Max 25/30fps@1080P
- motorized Lens: 2.7~12mm
- D&N(ICR), 3D-DNR, Micro SD, IR LEDs: 30m
- WDR(up to 120dB)
- Smart detection: Face/Tripwire/Intrusion/Scene change detection
- IP67, IK10, DC12V(AC24V optional), PoE
- Material: Metal

## IPC-HDBW5220E-Z

**NEW**



### 2MP Full HD Network Vandal-proof IR Dome Camera

- 1/2.8" 2Mp CMOS
- H.264 & MJPEG triple-stream encoding
- Max 25/30fps@1080P
- Motorized Lens: 2.7~12mm
- D&N(ICR), 3D-DNR, Micro SD, IR LEDs: 30m
- Smart detection: Face/Tripwire/Intrusion/Scene change detection
- IP67, IK10, DC12V(AC24V optional), PoE
- Material: Metal

## IPC-HDBW5121E-Z

**NEW**



### 1.3MP HD WDR Network Vandal-proof IR Dome Camera

- 1/3" 1.3Mp CMOS
- H.264 & MJPEG triple-stream encoding
- Max 25/30fps@1.3M
- Motorized Lens: 2.7~12mm
- D&N(ICR), 3D-DNR, Micro SD, IR LEDs: 30m
- WDR(up to 120dB)
- Smart detection: Face/Tripwire/Intrusion/Scene change detection
- IP67, IK10, DC12V(AC24V optional), PoE
- Material: Metal

## IPC-EB5400



### 4MP Full HD Network Vandal-proof Fisheye Camera

- 1/3" 4Mp CMOS
- H.264 & MJPEG dual-stream encoding
- Max 15fps@4M(2592x1520), 25/30fps@1080P
- D&N(Electronic), 3D-DNR, Micro SD
- Built in mic
- IK10, DC12V, PoE
- Material: Metal

## IPC-HFW4800E



### 4K Ultra HD Network Small IR-Bullet Camera

- 1/2.3" 4K CMOS
- H.264 & MJPEG dual-stream encoding
- Max 15fps@4K(3840x2160), 25/30fps@3M
- 4mm fixed lens
- D&N(ICR), 3D-DNR, IR LEDs: 30m
- IP67, DC12V, PoE
- Material: Plastic (upper cover)+ Metal (the rest)

## IPC-HFW4421E

**NEW**



### 4MP Full HD WDR Network Small IR-Bullet Camera

- 1/3" 4Mp CMOS
- H.264 & MJPEG triple-stream encoding
- Max 20fps@4M, 25/30fps@3M
- Lens: 3.6mm (6mm, 8mm optional)
- D&N(ICR), 3D-DNR, IR LEDs: 40m
- WDR(up to 120dB)
- Smart detection: Face/Tripwire/Intrusion/Scene change detection
- IP67, DC12V, PoE
- Material: Plastic (upper cover)+ Metal (the rest)

## IPC-HFW4221E

**NEW**



### 2MP Full HD WDR Network Small IR-Bullet Camera

- 1/2.7" 2Mp CMOS
- H.264 & MJPEG triple-stream encoding
- Max 25/30fps@1080P
- Lens: 3.6mm (6mm, 8mm optional)
- D&N(ICR), 3D-DNR, IR LEDs: 40m
- WDR(up to 120dB)
- Smart detection: Face/Tripwire/Intrusion/Scene change detection
- IP67, DC12V, PoE
- Material: Plastic (upper cover)+ Metal (the rest)

## IPC-HFW4220E

**NEW**



### 2MP Full HD Network Small IR-Bullet Camera

- 1/2.8" 2Mp CMOS
- H.264 & MJPEG triple-stream encoding
- Max 25/30fps@1080P
- Lens: 3.6mm (6mm, 8mm optional)
- D&N(ICR), 3D-DNR, IR LEDs: 40m
- Smart detection: Face/Tripwire/Intrusion/Scene change detection
- IP67, DC12V, PoE
- Material: Plastic (upper cover)+ Metal (the rest)

## IPC-HFW4120E

**NEW**



### 1.3MP HD Network Small IR-Bullet Camera

- 1/3" 1.3Mp CMOS
- H.264 & MJPEG triple-stream encoding
- Max 25/30fps@1.3M
- Lens: 3.6mm (6mm, 8mm optional)
- D&N(ICR), 3D-DNR, IR LEDs: 40m
- Smart detection: Face/Tripwire/Intrusion/Scene change detection
- IP67, DC12V, PoE
- Material: Plastic (upper cover)+ Metal (the rest)

## IPC-HFW4421S

**NEW**



### 4MP Full HD WDR Network Small IR-Bullet Camera

- 1/3" 4Mp CMOS
- H.264 & MJPEG triple-stream encoding
- Max 20fps@4M, 25/30fps@3M
- Lens: 3.6mm (6mm optional)
- D&N(ICR), 3D-DNR, IR LEDs: 50m
- WDR(up to 120dB)
- Smart detection: Face/Tripwire/Intrusion/Scene change detection
- IP67, DC12V, PoE
- Material: Plastic (upper cover)+ Metal (the rest)

## IPC-HFW4221S

**NEW**



### 2MP Full HD WDR Network Small IR-Bullet Camera

- 1/2.7" 2Mp CMOS
- H.264 & MJPEG triple-stream encoding
- Max 25/30fps@1080P
- Lens: 3.6mm (6mm optional)
- D&N(ICR), 3D-DNR, IR LEDs: 30m
- WDR(up to 120dB)
- Smart detection: Face/Tripwire/Intrusion/Scene change detection
- IP67, DC12V, PoE
- Material: Plastic (upper cover)+ Metal (the rest)

## IPC-HFW4220S

**NEW**



### 2MP Full HD Network Small IR-Bullet Camera

- 1/2.8" 2Mp CMOS
- H.264 & MJPEG triple-stream encoding
- Max 25/30fps@1080P
- Lens: 3.6mm (6mm optional)
- D&N(ICR), 3D-DNR, IR LEDs: 30m
- Smart detection: Face/Tripwire/Intrusion/Scene change detection
- IP67, DC12V, PoE
- Material: Plastic (upper cover)+ Metal (the rest)

## IPC-HFW4120S

**NEW**



### 1.3MP HD Network Small IR-Bullet Camera

- 1/3" 1.3Mp CMOS
- H.264 & MJPEG triple-stream encoding
- Max 25/30fps@1.3M
- Lens: 3.6mm (6mm optional)
- D&N(ICR), 3D-DNR, IR LEDs: 30m
- Smart detection: Face/Tripwire/Intrusion/Scene change detection
- IP67, DC12V, PoE
- Material: Plastic (upper cover)+ Metal (the rest)

## IPC-HDBW4800E



### 4K Ultra HD Network IR Mini Dome Camera

- 1/2.3" 4K CMOS
- H.264 & MJPEG dual-stream encoding
- Max 15fps@4K(3840x2160), 25/30fps@3M
- 4mm fixed lens
- D&N(ICR), 3D-DNR, IR LEDs: 30m
- IP66, IK10, DC12V, PoE
- Material: Metal

## IPC-HDBW4421E

**NEW**



### 4MP Full HD WDR Network Vandal-proof IR Dome Camera

- 1/3" 4Mp CMOS
- H.264 & MJPEG triple-stream encoding
- Max 20fps@4M, 25/30fps@3M
- Lens: 3.6mm (2.8mm, 6mm optional)
- D&N(ICR), 3D-DNR, IR LEDs: 30m
- WDR(up to 120dB)
- Smart detection: Face/Tripwire/Intrusion/Scene change detection
- IP67, IK10, DC12V, PoE
- Material: Metal

## IPC-HDBW4221E

**NEW**



### 2MP Full HD WDR Network Vandal-proof IR Dome Camera

- 1/2.7" 2Mp CMOS
- H.264 & MJPEG triple-stream encoding
- Max 25/30fps@1080P
- Lens: 3.6mm (2.8mm, 6mm optional)
- D&N(ICR), 3D-DNR, IR LEDs: 30m
- WDR(up to 120dB)
- Smart detection: Face/Tripwire/Intrusion/Scene change detection
- IP67, IK10, DC12V, PoE
- Material: Metal

## IPC-HDBW4220E

**NEW**



### 2MP Full HD Network Vandal-proof IR Dome Camera

- 1/2.8" 2Mp CMOS
- H.264 & MJPEG triple-stream encoding
- Max 25/30fps@1080P
- Lens: 3.6mm (2.8mm, 6mm optional)
- D&N(ICR), 3D-DNR, IR LEDs: 30m
- Smart detection: Face/Tripwire/Intrusion/Scene change detection
- IP67, IK10, DC12V, PoE
- Material: Metal

## IPC-HDBW4120E

**NEW**



### 1.3MP HD Network Vandal-proof IR Dome Camera

- 1/3" 1.3Mp CMOS
- H.264 & MJPEG triple-stream encoding
- Max 25/30fps@1.3M
- Lens: 3.6mm (2.8mm, 6mm optional)
- D&N(ICR), 3D-DNR, IR LEDs: 30m
- Smart detection: Face/Tripwire/Intrusion/Scene change detection
- IP67, IK10, DC12V, PoE
- Material: Metal

## IPC-HDBW4421F

**NEW**



### 4MP Full HD WDR Network Vandal-proof Wedge Dome Camera

- 1/3" 4Mp CMOS
- H.264 & MJPEG triple-stream encoding
- Max 20fps@4M, 25/30fps@3M
- Lens: 3.6mm (2.8mm, 6mm optional)
- D&N(ICR), 3D-DNR, IR LEDs: 20m
- WDR(up to 120dB)
- Smart detection: Face/Tripwire/Intrusion/Scene change detection
- IP67, IK10, DC12V, PoE
- Material: Metal

## IPC-HDBW4221F

**NEW**



### 2MP Full HD WDR Network Vandal-proof Wedge Dome Camera

- 1/2.7" 2Mp CMOS
- H.264 & MJPEG triple-stream encoding
- Max 25/30fps@1080P
- Lens: 3.6mm (2.8mm, 6mm optional)
- D&N(ICR), 3D-DNR, IR LEDs: 20m
- WDR(up to 120dB)
- Smart detection: Face/Tripwire/Intrusion/Scene change detection
- IP67, IK10, DC12V, PoE
- Material: Metal

## IPC-HDBW4220F

**NEW**



### 2MP Full HD Network Vandal-proof Wedge Dome Camera

- 1/2.8" 2Mp CMOS
- H.264 & MJPEG triple-stream encoding
- Max 25/30fps@1080P
- Lens: 3.6mm (2.8mm, 6mm optional)
- D&N(ICR), 3D-DNR, IR LEDs: 20m
- Smart detection: Face/Tripwire/Intrusion/Scene change detection
- IP67, IK10, DC12V, PoE
- Material: Metal

## IPC-HDBW4120F

**NEW**



### 1.3MP HD Network Vandal-proof Wedge Dome Camera

- 1/3" 1.3Mp CMOS
- H.264 & MJPEG triple-stream encoding
- Max 25/30fps@1.3M
- Lens: 3.6mm (2.8mm, 6mm optional)
- D&N(ICR), 3D-DNR, IR LEDs: 20m
- Smart detection: Face/Tripwire/Intrusion/Scene change detection
- IP67, IK10, DC12V, PoE
- Material: Metal

## IPC-HDB4300F-PT



### 3MP Full HD Network Vandal-proof PT Dome Camera

- 1/3" 3Mp CMOS
- H.264 & MJPEG dual-stream encoding
- Max 20fps@3M, 25/30fps@1080P
- Lens: 3.6mm fixed lens
- Max 100°/s preset speed, ±180°Pan, 90°Tilt
- D&N(Electronic), 3D-DNR, Micro SD
- IP66, IK10, DC12V, PoE
- Material: Metal

## IPC-HDB4200F-PT



### 2MP Full HD Network Vandal-proof PT Dome Camera

- 1/2.8" 2Mp Exmor CMOS
- H.264 & MJPEG dual-stream encoding
- Max 25/30fps@1080P
- Lens: 3.6mm fixed lens
- Max 100°/s preset speed, ±180°Pan, 90°Tilt
- D&N(Electronic), 3D-DNR, Micro SD
- IP66, IK10, DC12V, PoE
- Material: Metal

## IPC-HDB4100F-PT



### 1.3MP HD Network Vandal-proof PT Dome Camera

- 1/3" 1.3Mp CMOS
- H.264 & MJPEG dual-stream encoding
- Max 25/30fps@1.3M
- Lens: 3.6mm fixed lens
- Max 100°/s preset speed, ±180°Pan, 90°Tilt
- D&N(Electronic), 3D-DNR, Micro SD
- IP66, IK10, DC12V, PoE
- Material: Metal

## IPC-HDB4300C(-A)



### 3MP Full HD Network Vandal-proof Dome Camera

- 1/3" 3Mp CMOS
- H.264 & MJPEG dual-stream encoding
- Max 20fps@3M, 25/30fps@1080P
- Lens: 3.6mm (2.8mm, 6mm optional)
- D&N(Electronic), 3D-DNR, Micro SD
- Built-in Mic(-A)
- IP66(only for HDB4300C), IK10, DC12V, PoE
- Material: Metal

## IPC-HDB4200C(-A)



### 2MP Full HD Network Vandal-proof Dome Camera

- 1/2.8" 2Mp CMOS
- H.264 & MJPEG dual-stream encoding
- Max 25/30fps@1080P
- Lens: 3.6mm (2.8mm, 6mm optional)
- D&N(Electronic), 3D-DNR, Micro SD
- Built-in Mic(-A)
- IP66(only for HDB4200C), IK10, DC12V, PoE
- Material: Metal

## IPC-HDB4100C(-A)



### 1.3MP HD Network Vandal-proof Dome Camera

- 1/3" 1.3Mp CMOS
- H.264 & MJPEG dual-stream encoding
- Max 25/30fps@1.3M
- Lens: 3.6mm (2.8mm, 6mm optional)
- D&N(Electronic), 3D-DNR, Micro SD
- Built-in Mic(-A)
- IP66(only for HDB4100C), IK10, DC12V, PoE
- Material: Metal

## IPC-HDW4421C



### 4MP Full HD WDR Network Small IR Dome Camera

- 1/3" 4Mp CMOS
- H.264 & MJPEG triple-stream encoding
- Max 20fps@4M, 25/30fps@3M
- Lens: 3.6mm (6mm optional)
- D&N(ICR), 3D-DNR, IR LEDs: 50m
- WDR(up to 120dB)
- Smart detection: Face/Tripwire/Intrusion/Scene change detection
- IP67, DC12V, PoE
- Material: Plastic(outside)+Metal(inner core)

## IPC-HDW4221C



### 2MP Full HD WDR Network Small IR Dome Camera

- 1/2.7" 2Mp CMOS
- H.264 & MJPEG triple-stream encoding
- Max 25/30fps@1080P
- Lens: 3.6mm (6mm optional)
- D&N(ICR), 3D-DNR, IR LEDs: 50m
- WDR(up to 120dB)
- Smart detection: Face/Tripwire/Intrusion/Scene change detection
- IP67, DC12V, PoE
- Material: Plastic(outside)+Metal(inner core)

## IPC-HDW4220C



### 2MP Full HD Network Small IR Dome Camera

- 1/2.8" 2Mp CMOS
- Smart triple streams supported
- H.264 & MJPEG dual-stream encoding
- Max 25/30fps@1080P
- Lens: 3.6mm (6mm optional)
- D&N(ICR), 3D-DNR, IR LEDs: 50m
- Smart detection: Face/Tripwire/Intrusion/Scene change detection
- IP67, DC12V, PoE
- Material: Plastic(outside)+Metal(inner core)

**IPC-HDW4120C**



**1.3MP HD Network  
Small IR Dome Camera**

- 1/3" 1.3Mp CMOS
- H.264 & MJPEG triple-stream encoding
- Max 25/30fps@1.3M
- Lens: 3.6mm (6mm optional)
- D&N(ICR), 3D-DNR, IR LEDs: 50m
- Smart detection: Face/Tripwire/Intrusion/Scene change detection
- IP67, DC12V, PoE
- Material: Plastic(outside)+Metal(inner core)

**IPC-HDW4421M**

**NEW**



**4MP Full HD WDR Network  
Small IR Eyeball Camera**

- 1/3" 4Mp CMOS
- H.264 & MJPEG triple-stream encoding
- Max 20fps@4M,25/30fps@3M
- Lens: 3.6mm (2.8mm,6mm optional)
- D&N(ICR), 3D-DNR, IR LEDs: 30m
- WDR(up to 120dB)
- Smart detection: Face/Tripwire/Intrusion/Scene change detection
- IP67, DC12V, PoE
- Material: Metal

**IPC-HDW4221M**

**NEW**



**2MP Full HD WDR Network  
Small IR Eyeball Camera**

- 1/2.7" 2Mp CMOS
- H.264 & MJPEG triple-stream encoding
- Max 25/30fps@1080P
- Lens: 3.6mm (2.8mm,6mm optional)
- D&N(ICR), 3D-DNR, IR LEDs: 30m
- WDR(up to 120dB)
- Smart detection: Face/Tripwire/Intrusion/Scene change detection
- IP67, DC12V, PoE
- Material: Metal

**• Lite Series**

**IPC-HDW4220M**

**NEW**



**2MP Full HD Network  
Small IR Eyeball Camera**

- 1/2.8" 2Mp CMOS
- H.264 & MJPEG triple-stream encoding
- Max 25/30fps@1080P
- Lens: 3.6mm (2.8mm,6mm optional)
- D&N(ICR), 3D-DNR, IR LEDs: 30m
- Smart detection: Face/Tripwire/Intrusion/Scene change detection
- IP67, DC12V, PoE
- Material: Metal

**IPC-HDW4120M**

**NEW**



**1.3MP HD Network  
Small IR Eyeball Camera**

- 1/3" 1.3Mp CMOS
- H.264 & MJPEG triple-stream encoding
- Max 25/30fps@1.3M
- Lens: 3.6mm (2.8mm,6mm optional)
- D&N(ICR), 3D-DNR, IR LEDs: 30m
- Smart detection: Face/Tripwire/Intrusion/Scene change detection
- IP66, DC12V, PoE
- Material: Metal

**IPC-HFW2300R-Z/VF**



**3MP Full HD Network  
IR-Bullet Camera**

- 1/3" 3Mp CMOS
- H.264 & MJPEG dual-stream encoding
- Max 20fps@3M,25/30fps@1080P
- Lens:2.7~12mm
- D&N(ICR), 3D-DNR, IR LEDs: 30m
- IP66, DC12V, PoE
- Material: Metal

**IPC-HFW2200R-Z/VF**



**2MP Full HD Network  
IR-Bullet Camera**

- 1/2.8" 2Mp Exmor CMOS
- H.264 & MJPEG dual-stream encoding
- Max 25/30fps@1080P
- Lens:2.7~12mm
- D&N(ICR), 3D-DNR, IR LEDs: 30m
- IP66, DC12V, PoE
- Material: Metal

**IPC-HFW2201R-ZS/VFS**



**2MP Full HD WDR Network  
IR-Bullet Camera**

- 1/3" 2Mp CMOS
- H.264 & MJPEG dual-stream encoding
- Max 25/30fps@1080P
- WDR(up to 120dB)
- Lens:2.7~12mm
- D&N(ICR), 3D-DNR, ,Micro SD IR LEDs: 30m
- IP66, DC12V, PoE
- Material: Metal

**IPC-HFW2100R-Z/VF**

**NEW**



**1.3MP HD Network  
IR-Bullet Camera**

- 1/3" 1.3Mp CMOS
- H.264 & MJPEG dual-stream encoding
- Max 25/30fps@1.3M
- Lens:2.7~12mm
- D&N(ICR), 3D-DNR, IR LEDs: 30m
- IP66, DC12V, PoE
- Material: Metal

**IPC-HFW2101R-ZS/VFS**



**1.3MP HD WDR Network  
IR-Bullet Camera**

- 1/3" 1.3Mp CMOS
- H.264 & MJPEG dual-stream encoding
- Max 25/30fps@1.3M
- WDR(up to 120dB)
- Lens:2.7~12mm
- D&N(ICR), 3D-DNR, Micro SD, IR LEDs: 30m
- IP66, DC12V, PoE,
- Material: Metal

**IPC-HDBW2300R-Z/VF**



**3MP Full HD Network  
Vandal-proof IR Dome Camera**

- 1/3" 3Mp CMOS
- H.264 & MJPEG dual-stream encoding
- Max 20fps@3M,25/30fps@1080P
- Lens:2.7~12mm
- D&N(ICR), 3D-DNR, IR LEDs: 20m
- IP66,IK10, DC12V,PoE
- Material: Metal

**IPC-HDBW2200R-Z/VF**



**2MP Full HD Network  
Vandal-proof IR Dome Camera**

- 1/2.8" 2Mp CMOS
- H.264 & MJPEG dual-stream encoding
- Max 25/30fps@1080P
- Lens:2.7~12mm
- D&N(ICR), 3D-DNR, IR LEDs: 20m
- IP66, IK10,DC12V,PoE
- Material: Metal

### IPC-HDBW2101R-ZS/VFS



#### 2MP Full HD WDR Network Vandal-proof IR Dome Camera

- 1/3" 2Mp CMOS
- H.264 & MJPEG dual-stream encoding
- Max 25/30fps@1080P
- WDR(up to 120dB)
- Lens:2.7~12mm
- D&N(ICR), 3D-DNR, Micro SD, IR LEDs: 20m
- IP66, IK10,DC12V,PoE
- Material: Metal

### IPC-HDBW2100R-Z/VF



#### 1.3MP HD Network Vandal-proof IR Dome Camera

- 1/3" 1.3Mp CMOS
- H.264 & MJPEG dual-stream encoding
- Max 25/30fps@1.3Mp
- Lens:2.7~12mm
- D&N(ICR), 3D-DNR, IR LEDs: 20m
- IP66, IK10,DC12V,PoE
- Material: Metal

### IPC-HDBW2101R-ZS/VFS



#### 1.3MP HD WDR Network Vandal-proof IR Dome Camera

- 1/3" 1.3Mp CMOS
- H.264 & MJPEG dual-stream encoding
- Max 25/30fps@1.3Mp
- WDR(up to 120dB)
- Lens:2.7~12mm
- D&N(ICR), 3D-DNR, Micro SD, IR LEDs: 20m
- IP66, IK10,DC12V,PoE
- Material: Metal

### IPC-HDW2220R-Z

**NEW**



#### 2MP Full HD Network IR Dome Camera

- 1/3" 2Mp CMOS
- H.264 & MJPEG dual-stream encoding
- Max 25/30fps@1080P
- Motorized Lens:2.7~12mm
- D&N(ICR), 3D-DNR, Micro SD, IR LEDs: 60m
- IP67, IK10,DC12V,PoE
- Material: Metal

### IPC-HDW2120R-Z



#### 1.3MP HD Network IR Dome Camera

- 1/3" 1.3Mp CMOS
- H.264 & MJPEG dual-stream encoding
- Max 25/30fps@1.3Mp
- Motorized Lens:2.7~12mm
- D&N(ICR), 3D-DNR, Micro SD, IR LEDs: 60m
- IP67, IK10,DC12V,PoE
- Material: Metal

### IPC-HFW1320S



#### 3MP Full HD Network Small IR-Bullet Camera

- 1/3" 3Mp CMOS
- H.264 & MJPEG dual-stream encoding
- Max 25/30fps@1080P
- Lens: 3.6mm (6mm optional)
- D&N(ICR), IR LEDs: 30m
- IP67, DC12V, PoE
- Material: Plastic(upper cover)+Metal(the rest)

### IPC-HFW1220S



#### 2MP Full HD Network Small IR-Bullet Camera

- 1/2.8" 2Mp CMOS
- H.264 & MJPEG dual-stream encoding
- Max 25/30fps@1080P
- Lens: 3.6mm (6mm optional)
- D&N(ICR), IR LEDs: 30m
- IP67, DC12V, PoE
- Material: Plastic(upper cover)+Metal(the rest)

### IPC-HFW1120S



#### 1.3MP HD Network Small IR-Bullet Camera

- 1/3" 1.3Mp CMOS
- H.264 & MJPEG dual-stream encoding
- Max 25/30fps@1.3Mp
- Lens: 3.6mm (6mm optional)
- D&N(ICR), 3D-DNR, IR LEDs: 30m
- IP67, DC12V, PoE
- Material: Plastic(upper cover)+Metal(the rest)

### IPC-HFW1020S



#### 1MP HD Network Small IR-Bullet Camera

- 1/4" 1Mp CMOS
- H.264 & MJPEG dual-stream encoding
- Max 25/30fps@720P
- Lens: 3.6mm (6mm optional)
- D&N(ICR), 3D-DNR, IR LEDs: 30m
- IP67, DC12V, PoE
- Material: Plastic(upper cover)+Metal(the rest)

### IPC-HDW1320S



#### 3MP Full HD Network Eyeball Camera

- 1/3" 3Mp CMOS
- H.264 & MJPEG dual-stream encoding
- Max 20fps@3M,25/30fps@1080P
- Lens: 3.6mm (2.8mm,6mm optional)
- D&N(ICR), IR LEDs: 30m
- IP66,DC12V, PoE
- Material: Plastic(outside)+Metal(inner core)

### IPC-HDW1220S

**NEW**



#### 2MP Full HD Network Eyeball Camera

- 1/2.8" 2Mp CMOS
- H.264 & MJPEG dual-stream encoding
- Max 25/30fps@1080P
- Lens: 3.6mm (2.8mm,6mm optional)
- D&N(ICR), IR LEDs: 30m
- IP66,DC12V, PoE
- Material: Plastic(outside)+Metal(inner core)

### IPC-HDW1120S

**NEW**



#### 1.3MP HD Network Eyeball Camera

- 1/3" 1.3Mp CMOS
- H.264 & MJPEG dual-stream encoding
- Max 25/30fps@1.3Mp
- Lens: 3.6mm (2.8mm,6mm optional)
- D&N(ICR), IR LEDs: 30m
- IP66,DC12V, PoE
- Material: Plastic(outside)+Metal(inner core)

• **Wi-Fi Series**

**IPC-HDW1020S**

**NEW**



**1MP HD Network Mini Eyeball Camera**

- 1/4" 1Mp CMOS
- H.264 & MJPEG dual-stream encoding
- Max 25/30fps@720P
- Lens: 3.6mm (2.8mm, 6mm optional)
- D&N(ICR), 3D-DNR, IR LEDs: 30m
- IP66,DC12V, PoE
- Material: Plastic(outside)+Metal(inner core)

**IPC-HDPW4200F-WPT**

**NEW**



**2MP Full HD Wi-Fi Network Plastic IR PT Dome Camera**

- 1/2.8" 2Mp CMOS
- H.264 & MJPEG dual-stream encoding
- Max 25/30fps@1080P
- Lens: 3.6mm fixed lens
- Max 100°/s preset speed, ±180°Pan, 90°Tilt
- Wi-Fi, D&N(ICR), 3D-DNR, IR LEDs: 15m
- DC12V
- Material: Plastic

**IPC-HDPW4100F-WPT**

**NEW**



**1.3MP HD Wi-Fi Network Plastic IR PT Dome Camera**

- 1/3" 1.3Mp CMOS
- H.264 & MJPEG dual-stream encoding
- Max 25/30fps@1.3M
- Lens: 3.6mm fixed lens
- Max 100°/s preset speed, ±180°Pan, 90°Tilt
- Wi-Fi, D&N(ICR), 3D-DNR, IR LEDs: 15m
- DC12V
- Material: Plastic

**IPC-HFW1200S-W**



**2MP Full HD Wi-Fi Network Small IR-Bullet Camera**

- 1/3" 2Mp CMOS
- H.264 & MJPEG dual-stream encoding
- Max 25/30fps@1080P
- Lens: 3.6mm (6mm optional)
- Wi-Fi,D&N(ICR), IR LEDs: 30m
- IP66, DC12V
- Material: Plastic(upper cover)+Metal(the rest)

**IPC-HFW1000S-W**



**1MP HD Wi-Fi Network Small IR-Bullet Camera**

- 1/4" 1Mp CMOS
- H.264 & MJPEG dual-stream encoding
- Max 25/30fps@720P
- Lens: 3.6mm (6mm optional)
- Wi-Fi,D&N(ICR), 3D-DNR, IR LEDs: 30m
- IP66, DC12V
- Material: Plastic(upper cover)+Metal(the rest)

**IPC-HDBW1200E-W**



**2MP Full HD Wi-Fi Network Small IR Dome Camera**

- 1/3" 2Mp CMOS
- H.264 & MJPEG dual-stream encoding
- Max 25/30fps@1080P
- Lens: 3.6mm (2.8mm,6mm optional)
- Wi-Fi,D&N(ICR), IR LEDs: 30m
- IP66, IK10,DC12V
- Material: Metal

**IPC-HDBW1000E-W**



**1MP HD Wi-Fi Network Small IR Dome Camera**

- 1/4" 1Mp CMOS
- H.264 & MJPEG dual-stream encoding
- Max 25/30fps@720P
- Lens: 3.6mm (2.8mm optional)
- Wi-Fi, D&N(ICR), 3D-DNR,IR LEDs: 30m
- IP66,IK10,DC12V
- Material: Metal

**IPC-HD1200C-W**



**2MP Full HD Wi-Fi Network Mini Dome Camera**

- 1/3" 2Mp CMOS
- H.264 & MJPEG dual-stream encoding
- Max25/30fps@1080P
- Lens: 3.6mm (2.8mm optional)
- Wi-Fi, D&N(Electronic)
- DC12V
- Material: Plastic

**IPC-HD1000C-W**



**1MP HD Wi-Fi Network Mini Dome Camera**

- 1/4" 1Mp CMOS
- H.264 & MJPEG dual-stream encoding
- Max 25/30fps@720P
- Lens: 3.6mm (2.8mm, 6mm optional)
- D&N(Electronic), 3D-DNR
- DC12V
- Material: Plastic

• **Home-use Series**

**IPC-KW12/100W**



**1/1.3MP HD Network IR Cube Camera**

- 1/3" 1.3Mp CMOS(KW100W)
- 1/4" 1Mp CMOS(KW12W)
- H.264 & MJPEG dual-stream encoding
- Max 25/30fps@1.3M(KW100W)
- Max 25/30fps@720P(KW12W)
- Lens: 2.8mm(3.6mm Optional)
- D&N(ICR) ,3D-DNR, Micro SD, IR LEDs: 10m
- Wi-Fi, DC12V
- Material: Plastic

**IPC-AW12W**

**NEW**



**1MP A series HD PT Wi-Fi Network Camera**

- 1/4" 1Mp CMOS
- H.264 & MJPEG dual-stream encoding
- Max 25/30fps@720P
- Lens: 3.6mm fixed lens
- D&N(ICR),3D-DNR, Micro SD, IR LEDs: 10m
- Wi-Fi, DC 5V
- Material: Plastic

**IPC-C10**

**NEW**



**1MP C series HD Wi-Fi Network Camera**

- 1/4" 1Mp CMOS
- Max 25/30fps@720P
- Lens: 3.3mm fixed lens
- D&N(ICR),3D-DNR, Micro SD, IR LEDs: 10m
- Wi-Fi, DC 5V
- Material: Plastic



## Network PTZ Camera

### • H.265 Series

#### SD6AE530U-HN

**NEW**

##### 5Mp 30x Network IR PTZ Dome Camera

- 1/1.8" 5Mp CMOS
- Max 25/30fps@5M/3M, 50/60fps@1080P
- 6.0~180mm 30x optical zoom
- Support H.265/H.264 & MJPEG encoding
- Max 240 °/s pan speed
- WDR, D&N(ICR), Ultra DNR, EIS
- 1/1ch audio in/out, 7/2ch alarm in/out
- IP 67, , IK10, -40~70°C, Micro SD card, Hi-POE
- IR Distance up to 200m



#### SD6C430U-HN

**NEW**

##### 4Mp 30x Network IR PTZ Dome Camera

- 1/3" 4Mp CMOS
- Max 25/30fps@4M/3M, 50/60fps@1080P/1.3M
- 4.5~135mm 30x optical zoom
- Support H.265/H.264 & MJPEG encoding
- Max 240 °/s pan speed
- WDR, D&N(ICR), Ultra DNR, EIS
- 1/1ch audio in/out, 2/1ch alarm in/out
- IP 66, -40~60°C, Micro SD card
- IR Distance up to 100m



#### SD59430U-HN

**NEW**

##### 4Mp 30x Network IR PTZ Dome Camera

- 1/3" 4Mp CMOS
- Max 25/30fps@4M/3M, 50/60fps@1080P/1.3M
- 4.5~135mm 30x optical zoom
- Support H.265/H.264 & MJPEG encoding
- Max 400 °/s pan speed
- WDR, D&N(ICR), Ultra DNR, EIS
- 1/1ch audio in/out, 2/1ch alarm in/out
- IP 66, -40~70°C, Micro SD card, POE+
- IR Distance up to 100m



#### SD50/52C430U-HN

**NEW**

##### 4Mp 30x Network PTZ Dome Camera

- 1/3" 4Mp CMOS
- Max 25/30fps@4M/3M, 50/60fps@1080P/1.3M
- 4.5~135mm 30x optical zoom
- Support H.265/H.264 & MJPEG encoding
- Max 500 °/s pan speed
- WDR, D&N(ICR), Ultra DNR, EIS
- 1/1ch audio in/out, 2/1ch alarm in/out
- IP 67(Outdoor), IK10, -40~60°C(Outdoor), -20~60°C(Indoor), Micro SD card, POE+



#### SD6AL230F/240-HNI

**NEW**

##### 2Mp Full HD 30x/40x Ultra-smart Network Laser PTZ Dome Camera

- 1/1.9" 2Mp Exmor CMOS(230F, Starlight)
- 1/2.8" 2Mp Exmor CMOS(240)
- Max 25/30fps@1080P, 50/60fps@720P
- 6.0~180mm 30x optical zoom(230F) 7.9~316mm 40x optical zoom(240)
- Support Triple-streams encoding
- Max 240 °/s pan speed
- Auto-tracking, IVS(Intelligent Video Surveillance)
- Defog, WDR(230F), EIS, D&N(ICR), Ultra DNR
- 1/1ch audio in/out, 7/2ch alarm in/out
- IP 67, -40~70°C, Micro SD card, Hi-POE
- IR Distance up to 500m



#### SD6AE230F-HNI

**NEW**

##### 2Mp Full HD 30x Starlight Network IR PTZ Dome Camera

- 1/1.9" 2Mp Exmor CMOS
- Max 25/30fps@1080P, 50/60fps@720P
- 6.0~180mm 30x optical zoom
- Support Triple-streams encoding
- Max 240 °/s pan speed
- Auto-tracking, IVS(Intelligent Video Surveillance)
- Star light, WDR, EIS, D&N(ICR), Ultra DNR
- 1/1ch audio in/out, 7/2ch alarm in/out
- IP 67, IK10, -40~70°C, Micro SD card, Hi-POE
- IR Distance up to 200m



#### SD65220/230-HNI

##### 2MP Full HD 20x/30x Ultra-smart Network PTZ Dome Camera

- 1/2.8" 2Mp Exmor CMOS
- Max 25/30fps@1080P, 50/60fps@720P
- 4.7~94mm 20x optical zoom(220) 4.3~129mm 30x optical zoom(230)
- Support Triple-stream encoding
- Max 400 °/s pan speed
- Auto-tracking, IVS(Intelligent Video Surveillance)
- Defog, DWDR, EIS, D&N(ICR), Ultra DNR
- 1/1ch audio in/out, 7/2ch alarm in/out
- IP 67, IK 10 optional, -40~60°C, Micro SD card, POE+



#### SD6C220T/230T-HN

**NEW**

##### 2MP Full HD 20x/30x Cost-effective Network IR PTZ Dome Camera

- 1/2.8" 2Mp Exmor CMOS
- Max 25/30fps@1080P, 50/60fps@720P
- 5.5~110mm 20x optical zoom (220T) 4.3~129mm 30x optical zoom (230T)
- H.264/MJPEG & Dual-stream encoding
- Max 240 °/s pan speed
- Defog, DWDR, D&N(ICR), Ultra DNR
- 1/1ch audio in/out, 2/1ch alarm in/out
- IP 66, -40~60°C, Micro SD card
- IR Distance up to 100m



#### SD59212T/220T/230T-HN

**NEW**

##### 2MP Full HD 12x/20x/30x Ultra-high Speed Network IR PTZ Dome Camera

- 1/2.8" 2Mp Exmor CMOS
- Max 25/30fps@1080P, 50/60fps@720P
- 5.1~61.2mm 12x optical zoom (212T) 5.5~110mm 20x optical zoom (220T) 4.3~129mm 30x optical zoom (230T)
- H.264/MJPEG & Dual-stream encoding
- Max 400 °/s pan speed
- Defog, DWDR, D&N(ICR), Ultra DNR
- 1/1ch audio in/out, 2/1ch alarm in/out
- IP 66, -40~70°C, Micro SD card, POE+
- IR Distance up to 100m



#### SD29204S-GN

**NEW**

##### 2Mp 4x Network Mini IR PTZ Camera

- 1/2.8" 2Mp CMOS
- Max 25/30fps@1080P/720P
- 2.7~11mm 4x optical zoom
- H.264/MJPEG & Dual-stream encoding
- 0~360° pan rotation limited
- Max 100°/s Pan speed
- Defog, DWDR, D&N(ICR), DNR(2D&3D)
- Build-in microphone, -20~60°C
- IR Distance up to 30m
- POE/Wifi optional



#### SD60220T/230T-HN

**NEW**

##### 2MP Full HD 20x/30x Network PTZ Dome Camera

- 1/2.8" 2Mp Exmor CMOS
- Max 25/30fps@1080P, 50/60fps@720P
- 5.5~110mm 20x optical zoom (220T) 4.3~129mm 30x optical zoom (230T)
- H.264/MJPEG & Dual-stream encoding
- Max 600 °/s pan speed
- Defog, DWDR, D&N(ICR), Ultra DNR
- 1/1ch audio in/out, 7/2ch alarm in/out
- IP 67, IK 10, -40~70°C, Micro SD card, POE+



#### SD50220T/230T-HN SD52C220T/230T-HN

**NEW**

##### 2MP Full HD 20x/30x Ultra-high Speed Network PTZ Dome Camera

- 1/2.8" 2Mp Exmor CMOS
- Max 25/30fps@1080P, 50/60fps@720P
- 5.5~110mm 20x optical zoom (220T) 4.3~129mm 30x optical zoom (230T)
- H.264/MJPEG & Dual-stream encoding
- Max 500 °/s pan speed
- Defog, DWDR, D&N(ICR), Ultra DNR
- 1/1ch audio in/out, 2/1ch alarm in/out
- IP 67(outdoor), IK10, -40~60°C(Outdoor), -20~60°C(Indoor), Micro SD card, POE+



**SD40/42/42C212T-HN****NEW****2MP Full HD 12x Network Mini PTZ Dome Camera**

- 1/2.7" 2Mp Exmor CMOS
- Max 25/30fps@1080P, 50/60fps@720P
- 5.1~61.2mm 12x optical zoom
- H.264/MJPEG & Dual-stream encoding
- Max 300°/s Pan/Tilt speed
- Defog, WDR, D&N(ICR), Ultra DNR
- 1/1ch audio in/out, 2/1ch alarm in/out
- Micro SD card, PoE+
- IP 66(40/42), IK 10 optional
- -40~60°C (40), -20~60°C (42/42C)

**SD32203S-HN****NEW****2MP 3x Network Mini PTZ Camera**

- 1/2.8" 2Mp CMOS
- Max 25/30fps@1080P/720P
- 3.0~9.0mm 3x optical zoom
- H.264/MJPEG & Dual-stream encoding
- 360° endless pan rotation
- Max 240°/s Pan, 160°/s Tilt speed
- Defog, DWDR, D&N(ICR), DNR(2D&3D)
- Micro SD card, PoE, -20~60°C, IP66, IK10

**SD22204T-GN****NEW****2Mp 4x Network Mini PTZ Camera**

- 1/2.7" 2Mp CMOS
- Max 25/30fps@1080P/720P
- 2.7~11mm 4x optical zoom
- H.264/MJPEG & Dual-stream encoding
- 0~355° pan range, 0~90° tilt range
- Max 100°/s Pan speed
- Defog, WDR, D&N(ICR), DNR(2D&3D), IVS
- IP66, IK10, -20~60°C
- POE/Wifi optional

**• 720P Eco-savvy Series****SD6C120T-HN****NEW****1.3MP HD 20x Cost-effective Network IR PTZ Dome Camera**

- 1/3" 1.3Mp Exmor CMOS
- Max 25/30fps@1.3M/720P
- 4.7~94mm 20x optical zoom
- H.264/MJPEG & Dual-stream encoding
- Max 240°/s pan speed
- DWDR, D&N(ICR), Ultra DNR
- 1/1ch audio in/out, 2/1ch alarm in/out
- IP 66, -40~60°C, Micro SD card
- IR Distance up to 100m

**SD59120T-HN****NEW****1.3MP HD 20x Ultra-high Speed Network IR PTZ Dome Camera**

- 1/3" 1.3Mp Exmor CMOS
- Max 25/30fps@1.3M/720P
- 4.7~94mm 20x optical zoom
- H.264/MJPEG & Dual-stream encoding
- Max 400°/s pan speed
- DWDR, D&N(ICR), Ultra DNR
- 1/1ch audio in/out, 2/1ch alarm in/out
- IP 66, -40~70°C, Micro SD card, POE+
- IR Distance up to 100m

**SD60120T-HN****NEW****1.3MP HD 20x Cost-effective Network PTZ Dome Camera**

- 1/3" 1.3Mp Exmor CMOS
- Max 25/30fps@1.3M/720P
- 4.7~94mm 20x optical zoom
- H.264/MJPEG & Dual-stream encoding
- Max 600°/s pan speed
- DWDR, D&N(ICR), Ultra DNR
- 1/1ch audio in/out, 7/2ch alarm in/out
- IP 67, IK 10, -40~70°C, Micro SD card, POE+

**• Positioning System****SD50/52C120T-HN****NEW****1.3MP HD 20x Ultra-high Speed Network PTZ Dome Camera**

- 1/3" 1.3Mp Exmor CMOS
- Max 25/30fps@1.3M/720P
- 4.7~94mm 20x optical zoom
- H.264/MJPEG & Dual-stream encoding
- Max 500°/s pan speed
- DWDR, D&N(ICR), Ultra DNR
- 1/1ch audio in/out, 2/1ch alarm in/out
- IP 67(Outdoor), IK10, -40~60°C(Outdoor), -20~60°C (Indoor), Micro SD card, POE+

**PTZ12230/12240-IRB-N****2MP Full HD Network IR High-Speed Positioning System**

- 1/2.8" 2Mp Exmor CMOS
- Max 25/30fps@1080P, 50/60fps@720P
- 4.3~129mm 30x optical zoom (12230)
- 7.9~316mm 40x optical zoom (12240)
- Support Triple-stream encoding, auto-tracking, IVS
- Defog, ROI, Wiper, DWDR, D&N(ICR), DNR(2D&3D)
- Pan Range: 360° Endless, Speed: 0.1~160°/sec
- Tilt Range: -90~45°, Speed: 0.1~60°/sec
- IP 66, -40~70°C
- IR Distance up to 300m

**PTZ12230F-IRB-N****NEW****2MP Full HD Starlight Network IR High-Speed Positioning System**

- 1/1.9" 2Mp Exmor CMOS
- Max 25/30fps@1080P, 50/60fps@720P
- 5~150mm 30x optical zoom
- Support Triple-stream encoding, auto-tracking, IVS
- Star Light, WDR, Defog, ROI, Wiper, D&N(ICR), DNR(2D&3D)
- Pan Range: 360° Endless, Speed: 0.1~160°/sec
- Tilt Range: -90~45°, Speed: 0.1~60°/sec
- IP 66, -40~70°C
- IR Distance up to 300m

**Zoom Camera****SDZW1020S/2030S-N****1.3MP/2MP Network Housing IR Zoom Camera**

- 1/3" 1.3Mp Exmor CMOS (1020S)
- 1/2.8" 2Mp Exmor CMOS (2030S)
- Max 25/30fps@1.3M/720p(1020S)
- Max 25/30fps@1080P, 50/60fps@720p (2030S)
- 4.7~94mm 20x optical zoom (1020S)
- 4.3~129mm 30x optical zoom (2030S)
- DWDR, D&N(ICR), DNR(2D&3D)
- 2/1ch alarm in/out
- IP66, Micro SD card, -40~70°C
- IR Distance up to 100m

**SDZH1020S/2030S-N****1.3MP/2MP Network Housing Zoom Camera**

- 1/3" 1.3Mp Exmor CMOS (1020S)
- 1/2.8" 2Mp Exmor CMOS (2030S)
- Max 25/30fps@1.3M/720p (1020S)
- Max 25/30fps@1080P, 50/60fps@720p (2030S)
- 4.7~94mm 20x optical zoom (1020S)
- 4.3~129mm 30x optical zoom (2030S)
- DWDR, D&N(ICR), DNR(2D&3D)
- 2/1ch alarm in/out
- IP66, Micro SD card, -40~70°C

**SDZ1020S/2020S/2030S-N****1.3MP/2MP Network Zoom Camera**

- 1/3" 1.3Mp Exmor CMOS (1020S)
- 1/2.8" 2Mp Exmor CMOS (2020S/2030S)
- Max 25/30fps@1.3M/720p (1020S)
- Max 25/30fps@1080P, 50/60fps@720p (2020S/2030S)
- 4.7~94mm 20x optical zoom (1020S)
- 5.5~110mm 20x optical zoom (2020S)
- 4.3~129mm 30x optical zoom (2030S)
- DWDR, D&N(ICR), DNR(2D&3D)
- 2/1ch alarm in/out
- Micro SD card, -40~70°C, POE

## NVR

### • Super NVR

#### NVR724-256/724R-256/724D-256/724DR-256



##### 256CH 4U Super NVR

- Up to 256ch IP camera inputs
- Max 512Mbps Bit Rate input
- Compatible with 8Mp, 5Mp, 3Mp, 1080p, 720p, D1 and etc.
- 2 HDMI+1VGA output (Optional: 1 VGA+10 HDMI)
- 1/1ch Mic in/out
- 4ch alarm in&4ch relay out, Hot-Swap HDD, RAID 0/1/5/6/10/50/60
- 24 SATA, 1 eSATA, 4 USB(2 USB3.0), 4 RJ45(1000M)

#### NVR616-128/616R-128/616D-128/616DR-128-4K



##### 128CH 3U Super 4K NVR

- Support 4K realtime live view
- Up to 128ch IP camera inputs
- Max 384Mbps Bit Rate input
- Compatible with 12Mp, 8Mp, 6Mp, 5Mp, 3Mp, 1080p, 720p, D1 and etc.
- 2 HDMI+1VGA output, 1/1ch Mic in/out
- 16ch alarm in&8ch relay out, Hot-Swap HDD, RAID 0/1/5/6/10/50/60
- 16 SATA, 1 eSATA, 1 Mini SAS, 4 USB(1 USB3.0), 4 RJ45(1000M), 2 Giga optical fiber interface

#### NVR616-64/616R-64/616D-64/616DR-64-4K



##### 64CH 3U Super 4K NVR

- Support 4K realtime live view
- Up to 64ch IP camera inputs
- Max 384Mbps Bit Rate input
- Compatible with 12Mp, 8Mp, 6Mp, 5Mp, 3Mp, 1080p, 720p, D1 and etc.
- 2 HDMI+1VGA output, 1/1ch Mic in/out
- 16ch alarm in&8ch relay out, Hot-Swap HDD, RAID 0/1/5/6/10/50/60
- 16 SATA, 1 eSATA, 1 Mini SAS, 4 USB(1 USB3.0), 4 RJ45(1000M), 2 Giga optical fiber interface

#### NVR608-128/608R-128-4K



##### 128CH 2U Super 4K NVR

- Support 4K realtime live view
- Up to 128ch IP camera inputs
- Max 384Mbps Bit Rate input
- Compatible with 12Mp, 8Mp, 6Mp, 5Mp, 3Mp, 1080p, 720p, D1 and etc.
- 2 HDMI+1VGA output, 1/1ch Mic in/out
- 16ch alarm in&8ch relay out, Hot-Swap HDD, RAID 0/1/5/6/10/50/60
- 8 SATA, 1 eSATA, 4 USB(1 USB3.0), 2 RJ45(1000M)

#### NVR608-64/608R-64-4K



##### 64CH 2U Super 4K NVR

- Support 4K realtime live view
- Up to 64ch IP camera inputs
- Max 384Mbps Bit Rate input
- Compatible with 12Mp, 8Mp, 6Mp, 5Mp, 3Mp, 1080p, 720p, D1 and etc.
- 2 HDMI+1VGA output, 1/1ch Mic in/out
- 16ch alarm in&8ch relay out, Hot-Swap HDD, RAID 0/1/5/6/10/50/60
- 8 SATA, 1 eSATA, 4 USB(1 USB3.0), 2 RJ45(1000M)

#### NVR608-32-4K

**NEW**



##### 32CH 2U Super 4K NVR

- Support 4K realtime live view
- Up to 32ch IP camera inputs
- Max 384Mbps Bit Rate input
- Compatible with 12Mp, 8Mp, 6Mp, 5Mp, 3Mp, 1080p, 720p, D1 and etc.
- 2 HDMI+1VGA output, 1/1ch Mic in/out
- 16ch alarm in&8ch relay out, RAID 0/1/5/6/10/50/60
- 8 SATA, 1 eSATA, 4 USB(1 USB3.0), 2 RJ45(1000M)

### • Professional NVR

#### NVR7808/7816/7832/7864



##### 8/16/32/64CH 2U NVR

- 8/16/32/64ch IP camera inputs
- Max 256Mbps Bit Rate input
- Compatible with 1080p, 720p, D1 and etc.
- 1 HDMI, 1 VGA output up to 1080p, 1 TV
- 1/1ch Mic in/out
- 8/16/16/16ch alarm in&3/6/6/6ch relay out, RS485, RS232
- 8 SATA, 1 eSATA, 4 USB, 2 RJ45(1000M)

#### NVR7416/7432/7464-16P



##### 16/32/64CH 1.5U 16PoE NVR

- 16/32/64ch IP camera inputs
- Max 256Mbps Bit Rate input
- Compatible with 1080p, 720p, D1 and etc.
- 1 HDMI, 1 VGA output up to 1080p, 1 TV
- 1/1ch Mic in/out
- 16ch alarm in&6ch relay out, RS485, RS232
- 4 SATA, 1 eSATA, 3 USB, 1 RJ45(1000M)
- 16 PoE ports

#### NVR7208/7216/7232/7264-8P



##### 8/16/32/64CH 1U 8PoE NVR

- 8/16/32/64ch IP camera inputs
- Max 256Mbps Bit Rate input
- Compatible with 1080p, 720p, D1 and etc.
- 1/1ch Mic in/out
- 1 HDMI, 1 VGA output up to 1080p
- 8ch alarm in&3ch relay out, RS485, RS232
- 2 SATA, 2 USB, 1 RJ45(1000M)
- 8 PoE ports

#### NVR5808/5816/5832



##### 8/16/32CH 2U NVR

- 8/16/32ch IP camera inputs
- Max 160Mbps Bit Rate input
- Compatible with 5Mp,3Mp,1080p, 720p, D1 and etc.
- 1 HDMI, 1 VGA output up to 1080p,1 TV
- 1/1ch Mic in/out
- 8/16/16ch alarm in&6ch relay out, RS485, RS232
- 8 SATA,1 eSATA, 4 USB, 2 RJ45(1000M)

#### NVR5416/5432-16P



##### 16/32CH 1.5U 16PoE NVR

- 16/32ch IP camera inputs
- Max 160Mbps Bit Rate input
- Compatible with 5Mp,3Mp,1080p, 720p, D1 and etc.
- 1 HDMI, 1 VGA output up to 1080p,1 TV
- 1/1ch Mic in/out
- 16ch alarm in&6ch relay out, RS485, RS232
- 4 SATA,1 eSATA, 3 USB, 1 RJ45(1000M)
- 16 PoE ports

#### NVR5208/5216/5232-8P



##### 8/16/32CH 1U 8PoE NVR

- 8/16/32ch IP camera inputs
- Max 160Mbps Bit Rate input
- Compatible with 5Mp,3Mp,1080p, 720p, D1 and etc.
- 1 HDMI, 1 VGA output up to 1080p,1 TV
- 1/1ch Mic in/out
- 8ch alarm in&3ch relay out, RS485, RS232
- 2 SATA, 2 USB, 1 RJ45(1000M)
- 8 PoE ports

• **Beneficio NVR**

## NVR4808/4816/4832-4K



### 8/16/32CH 2U 4K&H.265 NVR

- Support 4K realtime live view
- 8/16/32ch IP camera inputs
- Max 256Mbps Bit Rate input
- Compatible with 12Mp, 8Mp, 6Mp, 5Mp, 3Mp, 1080p, 720p, D1 and etc.
- 2 HDMI, 1 VGA, 1/1ch Mic in/out
- 16ch alarm in&6ch relay out, RS485, RS232
- 8 SATA, 1 eSATA, 4 USB(2 USB3.0), 2 RJ45(1000M)

## NVR4816/4832-16P-4K



### 16/32CH 2U 16PoE 4K&H.265 NVR

- Support 4K realtime live view
- 16/32ch IP camera inputs
- Max 256Mbps Bit Rate input
- Compatible with 12Mp, 8Mp, 6Mp, 5Mp, 3Mp, 1080p, 720p, D1 and etc.
- 2 HDMI, 1 VGA, 1/1ch Mic in/out
- 16ch alarm in&6ch relay out, RS485, RS232
- 8 SATA, 1 eSATA, 4 USB(2 USB3.0), 1 RJ45(1000M)
- 16 PoE ports

## NVR4408/4416/4432-4K



### 8/16/32CH 1.5U 4K&H.265 NVR

- Support 4K realtime live view
- 8/16/32ch IP camera inputs
- Max 256Mbps Bit Rate input
- Compatible with 12Mp, 8Mp, 6Mp, 5Mp, 3Mp, 1080p, 720p, D1 and etc.
- 2 HDMI, 1 VGA, 1/1ch Mic in/out
- 16ch alarm in&6ch relay out, RS485, RS232
- 4 SATA, 1 eSATA, 3 USB(2 USB3.0), 2 RJ45(1000M)

## NVR4416/4432-16P-4K



### 16/32CH 1.5U 16PoE 4K&H.265 NVR

- Support 4K realtime live view
- 16/32ch IP camera inputs
- Max 256Mbps Bit Rate input
- Compatible with 12Mp, 8Mp, 6Mp, 5Mp, 3Mp, 1080p, 720p, D1 and etc.
- 2 HDMI, 1 VGA, 1/1ch Mic in/out
- 16ch alarm in&6ch relay out, RS485, RS232
- 4 SATA, 1 eSATA, 3 USB(2 USB3.0), 1 RJ45(1000M)
- 16 PoE ports

## NVR4208/4216/4232-4K



### 8/16/32CH 1U 4K&H.265 NVR

- Support 4K realtime live view
- 8/16/32ch IP camera inputs
- Max 256Mbps Bit Rate input
- Compatible with 12Mp, 8Mp, 6Mp, 5Mp, 3Mp, 1080p, 720p, D1 and etc.
- 1 HDMI, 1 VGA, 1/1ch Mic in/out
- 8ch alarm in&3ch relay out, RS485, RS232
- 2 SATA, 2 USB(1 USB3.0), 1 RJ45(1000M)

## NVR4208/4216/4232-8P-4K



### 8/16/32CH 1U 8PoE 4K&H.265 NVR

- Support 4K realtime live view
- 8/16/32ch IP camera inputs
- Max 256Mbps Bit Rate input
- Compatible with 12Mp, 8Mp, 6Mp, 5Mp, 3Mp, 1080p, 720p, D1 and etc.
- 1 HDMI, 1 VGA, 1/1ch Mic in/out
- 8ch alarm in&3ch relay out, RS485, RS232
- 2 SATA, 2 USB(1 USB3.0), 1 RJ45(1000M)
- 8 PoE ports

## NVR4808/4816/4832



### 8/16/32CH 2U NVR

- 8/16/32ch IP camera inputs
- Max 200Mbps Bit Rate input
- Compatible with 5Mp,3Mp,1080p, 720p, D1 and etc.
- 1 HDMI, 1 VGA output up to 1080p,1TV
- 1/1ch Mic in/out
- 16ch alarm in&4ch relay out, RS485, RS232
- 8 SATA, 1 eSATA, 3 USB(1 USB3.0), 2 RJ45(1000M)

## NVR4408/4416/4432



### 8/16/32CH 1.5U NVR

- 8/16/32ch IP camera inputs
- Max 200Mbps Bit Rate input
- Compatible with 5Mp,3Mp,1080p, 720p, D1 and etc.
- 1 HDMI, 1 VGA output up to 1080p,1 TV
- 1/1ch Mic in/out
- 16ch alarm in&4ch relay out, RS485, RS232
- 4 SATA, 1 eSATA, 2 USB(1 USB3.0), 1 RJ45(1000M)

## NVR4416/4432-16P



### 16/32CH 1.5U 16PoE NVR

- 16/32ch IP camera inputs
- Max 200Mbps Bit Rate input
- Compatible with 5Mp,3Mp,1080p, 720p, D1 and etc.
- 1 HDMI, 1 VGA output up to 1080p,1 TV
- 1/1ch Mic in/out
- 16ch alarm in&4ch relay out, RS485, RS232
- 4 SATA, 1 eSATA, 2 USB(1 USB3.0), 1 RJ45(1000M)
- 16 PoE ports

## NVR4204/4208/4216/4232



### 4/8/16/32CH 1U NVR

- 4/8/16/32ch IP camera inputs
- Max 200Mbps Bit Rate input
- Compatible with 5Mp, 3Mp, 1080p, 720p, D1 and etc.
- 1 HDMI, 1 VGA output up to 1080p
- 1/1ch Mic in/out
- 4ch alarm in&2ch relay out, RS485, RS232
- 2 SATA, 2 USB(1 USB3.0), 1 RJ45(1000M)

## NVR4204/4208/4216/4232-P



### 4/8/16/32CH 1U 4PoE NVR

- 4/8/16/32ch IP camera inputs
- Max 200Mbps Bit Rate input
- Compatible with 5Mp,3Mp,1080p, 720p, D1 and etc.
- 1 HDMI, 1 VGA output up to 1080p
- 1/1ch Mic in/out
- 4ch alarm in&2ch relay out, RS485, RS232
- 2 SATA, 2 USB(1 USB3.0), 1 RJ45(1000M)
- 4 PoE ports

## NVR4208/4216/4232-8P



### 8/16/32CH 1U 8PoE NVR

- 8/16/32ch IP camera inputs
- Max 200Mbps Bit Rate input
- Compatible with 5Mp,3Mp,1080p, 720p, D1 and etc.
- 1 HDMI, 1 VGA output up to 1080p
- 1/1ch Mic in/out
- 4ch alarm in&2ch relay out, RS485, RS232
- 2 SATA, 2 USB(1 USB3.0), 1 RJ45(1000M)
- 8 PoE ports

## NVR4208/4216/4232V-8P



### 8/16/32CH 2HDD 8PoE Vertical NVR

- 8/16/32ch IP camera inputs
- Max 200Mbps Bit Rate input
- Compatible with 5Mp, 3Mp, 1080p, 720p, D1 and etc.
- 1 HDMI, 1 VGA output up to 1080p
- 1/1ch Mic in/out
- 2ch alarm in&1ch relay out
- 2 SATA, 3 USB(1 USB3.0), 1 RJ45(1000M)
- 8 PoE ports

## NVR4104/4108/4116H



### 4/8/16CH Mini 1U NVR

- 4/8/16ch IP camera inputs
- Max 80Mbps Bit Rate input
- Compatible with 5Mp,3Mp,1080p, 720p, D1 and etc.
- 1 HDMI, 1 VGA output up to 1080p
- 1/1ch Mic in/out
- 1 SATA, 2 USB, 1 RJ45

## NVR4104/4108/4116H-P



### 4/8/16CH Mini 1U 4PoE NVR

- 4/8/16ch IP camera inputs
- Max 80Mbps Bit Rate input
- Compatible with 5Mp,3Mp,1080p, 720p, D1 and etc.
- 1 HDMI, 1 VGA output up to 1080p
- 1/1ch Mic in/out
- 1 SATA, 2 USB, 1 RJ45
- 4 PoE ports

## NVR4108/4116H-8P



### 8/16CH Mini 1U 8PoE NVR

- 8/16ch IP camera inputs
- Max 80Mbps Bit Rate input
- Compatible with 5Mp,3Mp,1080p, 720p, D1 and etc.
- 1 HDMI, 1 VGA output up to 1080p
- 1/1ch Mic in/out
- 2ch alarm in&1ch relay out
- 1 SATA, 2 USB, 1 RJ45
- 8 PoE ports

## NVR4104/4108/4116



### 4/8/16CH Smart 1U NVR

- 4/8/16ch IP camera inputs
- Max 80Mbps Bit Rate input
- Compatible with 5Mp,3Mp,1080p, 720p, D1 and etc.
- 1 HDMI, 1 VGA output up to 1080p
- 1/1ch Mic in/out
- 1 SATA, 2 USB, 1 RJ45

## NVR4104/4108/4116-P



### 4/8/16CH Smart 1U 4PoE NVR

- 4/8/16ch IP camera inputs
- Max 80Mbps Bit Rate input
- Compatible with 5Mp,3Mp,1080p, 720p, D1 and etc.
- 1 HDMI, 1 VGA output up to 1080p
- 1/1ch Mic in/out
- 1 SATA, 2 USB, 1 RJ45
- 4 PoE ports

## NVR4108/4116-8P



### 8/16CH Smart 1U 8PoE NVR

- 8/16ch IP camera inputs
- Max 80Mbps Bit Rate input
- Compatible with 5Mp,3Mp,1080p, 720p, D1 and etc.
- 1 HDMI, 1 VGA output up to 1080p
- 1/1ch Mic in/out
- 1 SATA, 2 USB, 1 RJ45
- 8 PoE ports

## NVR1104/1108H(-P)



### 4/8CH Mini 1U NVR

- 4/8ch IP camera inputs
- Max 56Mbps Bit Rate input
- Compatible with 1080p, 720p, D1 and etc.
- 1 HDMI, 1 VGA output up to 1080p
- 1/1ch Mic in/out
- 1 SATA, 2 USB, 1 RJ45
- \* -P: 4 PoE ports

## NVR1104/1108(-P)



### 4/8CH Smart 1U NVR

- 4/8ch IP camera inputs
- Max 56Mbps Bit Rate input
- Compatible with 1080p, 720p, D1 and etc.
- 1 HDMI, 1 VGA output up to 1080p
- 1/1ch Mic in/out
- 1 SATA, 2 USB, 1 RJ45
- \* -P: 4 PoE ports

## • Wi-Fi NVR

## NVR104/108(-P)



### 4/8CH Smart Box NVR

- 4/8ch IP camera inputs
- Max 56Mbps Bit Rate input
- Compatible with 1080p, 720p, D1 and etc.
- 1 HDMI, 1 VGA output up to 1080p
- 1 SATA, 2 USB, 1 RJ45
- \* -P: 4 PoE ports

## NVR1104/1108HS

**NEW**



### 4/8CH Compact 1U NVR

- 4/8ch IP camera inputs
- Max 24Mbps for NVR1104HS/56Mbps for NVR1108HS Bit Rate input
- Compatible with 1080p, 720p, D1 and etc.
- 1 HDMI, 1 VGA output up to 1080p
- 1 SATA, 2 USB, 1 RJ45

## NVR4104-W

**NEW**



### 4CH Smart 1U WiFi NVR

- 4ch WiFi IP camera inputs
- Max 80Mbps Bit Rate input
- Compatible with 5Mp, 3Mp, 1080p, 720p, D1 and etc.
- 1 HDMI, 1 VGA output up to 1080p
- 1/1ch Mic in/out
- 1 SATA, 2 USB, 1 RJ45
- Support WPS

## HDCVI Camera

### • Ultra Series — 1080P

#### HAC-HF3220E

**NEW**



2.4MP 1080P  
HDCVI Box Camera

- 1/2.8" 2.4Mp CMOS, ICR, 3D-DNR
- 25/30fps@1080P, 25/30/50/60fps@720P
- HD/SD switch, OSD, DWDR, Audio, Alarm
- DC12V/AC24V
- Material: Metal

#### HAC-HFW3220E-Z(H)



2.4MP 1080P Water-proof  
HDCVI IR-Bullet Camera

- 1/2.8" 2.4Mp CMOS, ICR, 3D-DNR
- 25/30fps@1080P, 25/30/50/60fps@720P
- HD/SD switch, OSD, DWDR, Audio, Alarm, Heater (optional)
- 2.7~12mm motorized lens, auto iris
- Max. IR LEDs length 50m, Smart IR
- IP66, DC12V/AC24V
- Material: Metal

#### HAC-HDBW3220E-Z(H)



2.4MP 1080P Vandal-proof  
HDCVI IR Dome Camera

- 1/2.8" 2.4Mp CMOS, ICR, 3D-DNR
- 25/30fps@1080P, 25/30/50/60fps@720P
- HD/SD switch, OSD, DWDR, Audio, Alarm, Heater (optional)
- 2.7~12mm motorized lens, auto iris
- Max. IR LEDs length 50m, Smart IR
- IP66, DC12V/AC24V
- Material: Metal

### • Ultra Series — 720P

#### HAC-HF3101



1.3MP 720P WDR  
HDCVI Camera

- 1/3" 1.3Mp CMOS, ICR, 3D-DNR
- 25/30/50/60fps@720P
- HD/SD switch, OSD, Audio, Alarm, WDR(120dB)
- DC12V/AC24V
- Material: Metal

### • Pro Series — 1080P

#### HAC-HFW2220R-Z



2.4MP 1080P Water-proof  
HDCVI IR-Bullet Camera

- 1/2.8" 2.4Mp CMOS, ICR, 3D-DNR
- 25/30fps@1080P, 25/30/50/60fps@720P
- HD/SD switch, OSD, DWDR
- 2.7~12mm motorized lens
- Max. IR LEDs length 30m, Smart IR
- IP66, DC12V
- Material: Metal

#### HAC-HFW2220R-Z-IRE6

**NEW**



2.4MP 1080P Water-proof  
HDCVI IR-Bullet Camera

- 1/2.8" 2.4Mp CMOS, ICR, 3D-DNR
- 25/30fps@1080P, 25/30/50/60fps@720P
- HD/SD switch, OSD, DWDR
- 2.7~12mm motorized lens
- Max. IR LEDs length 60m, Smart IR
- IP66, DC12V
- Material: Metal

#### HAC-HFW2220R-VF



2.4MP 1080P Water-proof  
HDCVI IR-Bullet Camera

- 1/2.8" 2.4Mp CMOS, ICR, 3D-DNR
- 25/30fps@1080P, 25/30/50/60fps@720P
- HD/SD switch, OSD, DWDR
- 2.7~12mm vari-focal lens
- Max. IR LEDs length 30m, Smart IR
- IP66, DC12V
- Material: Metal

#### HAC-HFW2220R-VF-IRE6

**NEW**



2.4MP 1080P Water-proof  
HDCVI IR-Bullet Camera

- 1/2.8" 2.4Mp CMOS, ICR, 3D-DNR
- 25/30fps@1080P, 25/30/50/60fps@720P
- HD/SD switch, OSD, DWDR
- 2.7~12mm vari-focal lens
- Max. IR LEDs length 60m, Smart IR
- IP66, DC12V
- Material: Metal

#### HAC-HDBW2220R-Z



2.4MP 1080P Vandal-proof IR  
HDCVI Dome Camera

- 1/2.8" 2.4Mp CMOS, ICR, 3D-DNR
- 25/30fps@1080P, 25/30/50/60fps@720P
- HD/SD switch, OSD, DWDR
- 2.7~12mm motorized lens
- Max. IR LEDs length 30m, Smart IR
- IP66, IK10, DC12V
- Material: Metal

#### HAC-HDBW2220R-VF



2.4MP 1080P Vandal-proof IR  
HDCVI Dome Camera

- 1/2.8" 2.4Mp CMOS, ICR, 3D-DNR
- 25/30fps@1080P, 25/30/50/60fps@720P
- HD/SD switch, OSD, DWDR
- 2.7~12mm vari-focal lens
- Max. IR LEDs length 30m, Smart IR
- IP66, IK10, DC12V
- Material: Metal

#### HAC-HDW2220E-Z

**NEW**



2.4MP 1080P IR  
HDCVI Dome Camera

- 1/2.8" 2.4Mp CMOS, ICR, 3D-DNR
- 25/30fps@1080P, 25/30/50/60fps@720P
- HD/SD switch, OSD, DWDR
- 2.7~12mm motorized lens
- Max. IR LEDs length 60m, Smart IR
- IP66, DC12V
- Material: Metal

#### HAC-HDW2220R-VF



2.4MP 1080P IR  
HDCVI Dome Camera

- 1/2.8" 2.4Mp CMOS, ICR, 3D-DNR
- 25/30fps@1080P, 25/30/50/60fps@720P
- HD/SD switch, OSD, DWDR
- 2.7~12mm vari-focal lens
- Max. IR LEDs length 30m, Smart IR
- IP66, DC12V
- Material: Metal

**HAC-HFW2220D-B**



**2.4MP 1080P Water-proof IR HDCVI Camera**

- 1/2.8" 2.4Mp CMOS, ICR, 3D-DNR
- 25/30fps@1080P, 25/30/50/60fps@720P
- HD/SD switch, OSD, DWDR
- 8mm fixed lens (3.6 mm, 6mm, 12mm, 16mm optional)
- Max. IR LEDs length 80m, Smart IR
- IP66, DC12V
- Default with Bracket
- Material: Metal (front) + Plastic (body)

**HAC-HFW2220B-B**



**2.4MP 1080P Water-proof IR HDCVI Camera**

- 1/2.8" 2.4Mp CMOS, ICR, 3D-DNR
- 25/30fps@1080P, 25/30/50/60fps@720P
- HD/SD switch, OSD, DWDR
- 6mm fixed lens (3.6mm, 8mm optional)
- Max. IR LEDs length 50m, Smart IR
- IP66, DC12V
- Default with Bracket
- Material: Metal (front) + Plastic (body)

**HAC-HFW2220E**

**NEW**



**2.4MP 1080P Water-proof HDCVI IR-Bullet Camera**

- 1/2.8" 2.4Mp CMOS, ICR, 3D-DNR
- 25/30fps@1080P, 25/30/50/60fps@720P
- HD/SD switch, OSD, DWDR
- 6mm fixed lens (3.6mm, 8mm optional)
- Max. IR LEDs length 40m, Smart IR
- IP66, DC12V
- Material: Metal

**HAC-HFW2220S**



**2.4MP 1080P Water-proof IR HDCVI Camera**

- 1/2.8" 2.4Mp CMOS, ICR, 3D-DNR
- 25/30fps@1080P, 25/30/50/60fps@720P
- HD/SD switch, OSD, DWDR
- 3.6mm fixed lens (3.6mm, 8mm optional)
- Max. IR LEDs length 30m, Smart IR
- IP66, DC12V
- Material: Metal

**HAC-HDBW2220E**



**2.4MP 1080P Vandal-proof IR HDCVI Mini Dome Camera**

- 1/2.8" 2.4Mp CMOS, ICR, 3D-DNR
- 25/30fps@1080P, 25/30/50/60fps@720P
- HD/SD switch, OSD, DWDR
- 3.6mm fixed lens (6mm, 8mm optional)
- Max. IR LEDs length 30m, Smart IR
- IP66, IK10, DC12V
- Material: Metal

**HAC-HDBW2220F**

**NEW**



**2.4MP 1080P Vandal-proof IR HDCVI Mini Dome Camera**

- 1/2.8" 2.4Mp CMOS, ICR, 3D-DNR
- 25/30fps@1080P, 25/30/50/60fps@720P
- HD/SD switch, OSD, DWDR
- 3.6mm fixed lens (6mm optional)
- Max. IR LEDs length 20m, Smart IR
- IP66, IK10, DC12V
- Material: Metal

**HAC-HDW2220E**

**NEW**



**2.4MP 1080P Water-proof IR HDCVI Dome Camera**

- 1/2.8" 2.4Mp CMOS, ICR, 3D-DNR
- 25/30fps@1080P, 25/30/50/60fps@720P
- HD/SD switch, OSD, DWDR
- 3.6mm fixed lens (6mm, 8mm optional)
- Max. IR LEDs length 50m, Smart IR
- IP66, DC12V
- Material: Metal (inner core) + Plastic (outside)

**HAC-HDW2220M**



**2.4MP 1080P Water-proof IR HDCVI Mini Dome Camera**

- 1/2.8" 2.4Mp CMOS, ICR, 3D-DNR
- 25/30fps@1080P, 25/30/50/60fps@720P
- HD/SD switch, OSD, DWDR
- 3.6mm fixed lens (6mm, 8mm optional)
- Max. IR LEDs length 30m, Smart IR
- IP66, DC12V
- Material: Metal

**HAC-HDW2220S**



**2.4MP 1080P Water-proof IR HDCVI Mini Dome Camera**

- 1/2.8" 2.4Mp CMOS, ICR, 3D-DNR
- 25/30fps@1080P, 25/30/50/60fps@720P
- HD/SD switch, OSD, DWDR
- 3.6mm fixed lens (6mm, 8mm optional)
- Max. IR LEDs length 30m, Smart IR
- IP66, DC12V
- Material: Metal (inner core) + Plastic (outside)

**• Pro Series — 720P**

**HAC-HFW2120R-Z**



**1.4MP 720P Water-proof HDCVI IR-Bullet Camera**

- 1/3" 1.4Mp CMOS, ICR, 3D-DNR
- 25/30/50/60fps@720P
- HD/SD switch, OSD, DWDR
- 2.7~12mm motorized lens
- Max. IR LEDs length 30m, Smart IR
- IP66, DC12V
- Material: Metal

**HAC-HFW2120R-Z-IRE6**

**NEW**



**1.4MP 720P Water-proof HDCVI IR-Bullet Camera**

- 1/3" 1.4Mp CMOS, ICR, 3D-DNR
- 25/30/50/60fps@720P
- HD/SD switch, OSD, DWDR
- 2.7~12mm motorized lens
- Max. IR LEDs length 60m, Smart IR
- IP66, DC12V
- Material: Metal

**HAC-HFW2120R-VF**



**1.4MP 720P Water-proof HDCVI IR-Bullet Camera**

- 1/3" 1.4Mp CMOS, ICR, 3D-DNR
- 25/30/50/60fps@720P
- HD/SD switch, OSD, DWDR
- 2.7~12mm vari-focal lens
- Max. IR LEDs length 30m, Smart IR
- IP66, DC12V
- Material: Metal

**HAC-HFW2120R-VF-IRE6**

**NEW**



**1.4MP 720P Water-proof HDCVI IR-Bullet Camera**

- 1/3" 1.4Mp CMOS, ICR, 3D-DNR
- 25/30/50/60fps@720P
- HD/SD switch, OSD, DWDR
- 2.7~12mm vari-focal lens
- Max. IR LEDs length 60m, Smart IR
- IP66, DC12V
- Material: Metal

**HAC-HDBW2120R-Z**



**1.4MP 720P Vandal-proof IR HDCVI Dome Camera**

- 1/3" 1.4Mp CMOS, ICR, 3D-DNR
- 25/30/50/60fps@720P
- HD/SD switch, OSD, DWDR
- 2.7~12mm motorized lens
- Max. IR LEDs length 30m, Smart IR
- IP66, IK10, DC12V
- Material: Metal

**HAC-HDBW2120R-VF**



**1.4MP 720P Vandal-proof IR HDCVI Dome Camera**

- 1/3" 1.4Mp CMOS, ICR, 3D-DNR
- 25/30/50/60fps@720P
- HD/SD switch, OSD, DWDR
- 2.7~12mm vari-focal lens
- Max. IR LEDs length 30m, Smart IR
- IP66, IK10, DC12V
- Material: Metal

**HAC-HDW2120E-Z**

**NEW**



**1.4MP 720P Vandal-proof IR HDCVI Dome Camera**

- 1/3" 1.4Mp CMOS, ICR, 3D-DNR
- 25/30/50/60fps@720P
- HD/SD switch, OSD, DWDR
- 2.7~12mm motorized lens
- Max. IR LEDs length 60m, Smart IR
- IP66, DC12V
- Material: Metal

**HAC-HDW2120R-VF**



**1.4MP 720P IR HDCVI Dome Camera**

- 1/3" 1.4Mp CMOS, ICR, 3D-DNR
- 25/30/50/60fps@720P
- HD/SD switch, OSD, DWDR
- 2.7~12mm vari-focal lens
- Max. IR LEDs length 30m, Smart IR
- IP66, DC12V
- Material: Metal

**HAC-HFW2120D-B**



**1.4MP 720P Water-proof HDCVI IR-Bullet Camera**

- 1/3" 1.4Mp CMOS, ICR, 3D-DNR
- 25/30/50/60fps@720P
- HD/SD switch, OSD, DWDR
- 8mm fixed lens (3.6 mm, 6mm, 12mm, 16mm optional)
- Max. IR LEDs length 80m, Smart IR
- IP66, DC12V
- Default with Bracket
- Material: Metal (front) + Plastic (body)

**HAC-HFW2120B-B**



**1.4MP 720P Water-proof HDCVI IR-Bullet Camera**

- 1/3" 1.4Mp CMOS, ICR, 3D-DNR
- 25/30/50/60fps@720P
- HD/SD switch, OSD, DWDR
- 6mm fixed lens (2.8 mm, 3.6mm, 8mm optional)
- Max. IR LEDs length 50m, Smart IR
- IP66, DC12V
- Default with Bracket
- Material: Metal (front) + Plastic (body)

**HAC-HFW2120E**

**NEW**



**1.4MP 720P Water-proof IR HDCVI Camera**

- 1/3" 1.4Mp CMOS, ICR, 3D-DNR
- 25/30/50/60fps@720P
- HD/SD switch, OSD, DWDR
- 6mm fixed lens (2.8 mm, 3.6mm, 8mm optional)
- Max. IR LEDs length 40m, Smart IR
- IP66, DC12V
- Material: Metal

**HAC-HFW2120S**



**1.4MP 720P Water-proof IR HDCVI Camera**

- 1/3" 1.4Mp CMOS, ICR, 3D-DNR
- 25/30/50/60fps@720P
- HD/SD switch, OSD, DWDR
- 6mm fixed lens (2.8 mm, 3.6mm, 8mm optional)
- Max. IR LEDs length 30m, Smart IR
- IP66, DC12V
- Material: Metal

**HAC-HDBW2120E**



**1.4MP 720P Vandal-proof IR HDCVI Mini Dome Camera**

- 1/3" 1.4Mp CMOS, ICR, 3D-DNR
- 25/30/50/60fps@720P
- HD/SD switch, OSD, DWDR
- 3.6mm fixed lens (2.8mm, 6mm, 8mm optional)
- Max. IR LEDs length 30m, Smart IR
- IP66, IK10, DC12V
- Material: Metal

**HAC-HDBW2120F**

**NEW**



**1.4MP 720P Vandal-proof IR HDCVI Mini Dome Camera**

- 1/3" 1.4Mp CMOS, ICR, 3D-DNR
- 25/30/50/60fps@720P
- HD/SD switch, OSD, DWDR
- 3.6mm fixed lens (6mm optional)
- Max. IR LEDs length 20m, Smart IR
- IP66, IK10, DC12V
- Material: Metal

**HAC-HDW2120E**

**NEW**



**1.4MP 720P Water -proof IR HDCVI Dome Camera**

- 1/3" 1.4Mp CMOS, ICR, 3D-DNR
- 25/30/50/60fps@720P
- HD/SD switch, OSD, DWDR
- 3.6mm fixed lens (2.8mm, 6mm, 8mm optional)
- Max. IR LEDs length 50m, Smart IR
- IP66, IK10, DC12V
- Material: Metal (inner core) + Plastic (outside)



• Lite Series — 1080P

**HAC-HDW2120M**



**1.4MP 720P Water-proof IR HDCVI Mini Dome Camera**

- 1/3" 1.4Mp CMOS, ICR, 3D-DNR
- 25/30/50/60fps@720P
- HD/SD switch, OSD, DWDR
- 3.6mm fixed lens (2.8mm, 6mm, 8mm optional)
- Max. IR LEDs length 30m, Smart IR
- IP66, DC12V
- Material: Metal

**HAC-HDW2120S**



**1.4MP 720P Water-proof IR HDCVI Mini Dome Camera**

- 1/3" 1.4Mp CMOS, ICR, 3D-DNR
- 25/30/50/60fps@720P
- HD/SD switch, OSD, DWDR
- 3.6mm fixed lens (2.8mm, 6mm, 8mm optional)
- Max. IR LEDs length 30m, Smart IR
- IP66, DC12V
- Material: Metal (inner core) + Plastic (outside)

**HAC-HFW1200R-VF**

**NEW**



**2MP 1080P Water-proof HDCVI IR-Bullet Camera**

- 1/2.7" 2Mp CMOS, ICR
- 25/30fps@1080P
- 2.7~12mm vari-focal lens
- Max. IR LEDs length 30m, Smart IR
- IP66, DC12V
- Material: Metal

**HAC-HFW1200R-VF-IRE6**

**NEW**



**2MP 1080P Water-proof HDCVI IR-Bullet Camera**

- 1/2.7" 2Mp CMOS, ICR
- 25/30fps@1080P
- 2.7~12mm vari-focal lens
- Max. IR LEDs length 60m, Smart IR
- IP66, DC12V
- Material: Metal

**HAC-HDBW1200R-VF**

**NEW**



**2MP 1080P Vandal-proof IR HDCVI Dome Camera**

- 1/2.7" 2Mp CMOS, ICR
- 25/30fps@1080P
- 2.7~12mm vari-focal lens
- Max. IR LEDs length 30m, Smart IR
- IP66, IK10, DC12V
- Material: Metal

**HAC-HDW1200R-VF**

**NEW**



**2MP 1080P IR HDCVI Dome Camera**

- 1/2.7" 2Mp CMOS, ICR
- 25/30fps@1080P
- 2.7~12mm vari-focal lens
- Max. IR LEDs length 30m, Smart IR
- IP66, DC12V
- Material: Metal

**HAC-HFW1200B**

**NEW**



**2MP 1080P Water-proof IR HDCVI Camera**

- 1/2.7" 2Mp CMOS, ICR
- 25/30fps@1080P
- 6mm fixed lens (3.6mm, 8mm optional)
- Max. IR LEDs length 50m, Smart IR
- IP66, DC12V
- Material: Metal (front) + Plastic (body)

**HAC-HFW1200S**

**NEW**



**2MP 1080P Water-proof IR HDCVI Camera**

- 1/2.7" 2Mp CMOS, ICR
- 25/30fps@1080P
- 6mm fixed lens (3.6mm, 8mm optional)
- Max. IR LEDs length 30m, Smart IR
- IP66, DC12V
- Material: Metal

**HAC-HFW1200RM**

**NEW**



**2MP 1080P Water-proof HDCVI IR-Bullet Camera**

- 1/2.7" 2Mp CMOS, ICR
- 25/30fps@1080P
- 3.6mm fixed lens (6mm optional)
- Max. IR LEDs length 20m, Smart IR
- IP66, DC12V
- Material: Metal

**HAC-HFW1200R**

**NEW**



**2MP 1080P Water-proof HDCVI IR-Bullet Camera**

- 1/2.7" 2Mp CMOS, ICR
- 25/30fps@1080P
- 3.6mm fixed lens (6mm optional)
- Max. IR LEDs length 20m, Smart IR
- IP66, DC12V
- Material: Plastic

**HAC-HDBW1200E**

**NEW**



**2MP 1080P Vandal-proof IR HDCVI Mini Dome Camera**

- 1/2.7" 2Mp CMOS, ICR
- 25/30fps@1080P
- 3.6mm fixed lens (6mm, 8mm optional)
- Max. IR LEDs length 30m, Smart IR
- IP66, IK10, DC12V
- Material: Metal

**HAC-HDW1200E**

**NEW**



**2MP 1080P Vandal-proof IR HDCVI Dome Camera**

- 1/2.7" 2Mp CMOS, ICR
- 25/30fps@1080P
- 3.6mm fixed lens (6mm, 8mm optional)
- Max. IR LEDs length 50m, Smart IR
- IP66, DC12V
- Material: Metal (inner core) + Plastic (outside)

• Lite Series — 720P

**HAC-HDW1200M**

**NEW**



**2MP 1080P Water-proof IR HDCVI Mini Dome Camera**

- 1/2.7" 2Mp CMOS, ICR
- 25/30fps@1080P
- 3.6mm fixed lens (6mm, 8mm optional)
- Max. IR LEDs length 30m, Smart IR
- IP66, DC12V
- Material: Metal

**HAC-HFW1100R-VF**



**1MP 720P Water-proof HDCVI IR-Bullet Camera**

- 1/2.9" 1Mp CMOS, ICR
- 25/30fps@720P
- 2.7~12mm vari-focal lens
- Max. IR LEDs length 30m, Smart IR
- IP66, DC12V
- Material: Metal

**HAC-HDBW1100R-VF**



**1MP 720P Vandal-proof IR HDCVI Dome Camera**

- 1/2.9" 1Mp CMOS, ICR
- 25/30fps@720P
- 2.7~12mm vari-focal lens
- Max. IR LEDs length 30m, Smart IR
- IP66, IK10, DC12V
- Material: Metal

**HAC-HDW1100R-VF**



**1MP 720P IR HDCVI Dome Camera**

- 1/2.9" 1Mp CMOS, ICR
- 25/30fps@720P
- 2.7~12mm vari-focal lens
- Max. IR LEDs length 30m, Smart IR
- IP66, DC12V
- Material: Metal

**HAC-HFW1100D-B**



**1MP 720P Water-proof IR HDCVI Camera**

- 1/2.9" 1Mp CMOS, ICR
- 25/30fps@720P
- 8mm fixed lens (3.6 mm, 6mm, 12mm, 16mm optional)
- Max. IR LEDs length 80m, Smart IR
- IP66, DC12V
- Material: Metal (front) + Plastic (body)
- Default with Bracket

**HAC-HFW1100B-B**



**1MP 720P Water-proof IR HDCVI Camera**

- 1/2.9" 1Mp CMOS, ICR
- 25/30fps@720P
- 6mm fixed lens (2.8 mm, 3.6mm, 8mm optional)
- Max. IR LEDs length 50m, Smart IR
- IP66, DC12V
- Material: Metal (front) + Plastic (body)
- Default with Bracket

**HAC-HFW1100S**



**1MP 720P Water-proof IR HDCVI Camera**

- 1/2.9" 1Mp CMOS, ICR
- 25/30fps@720P
- 6mm fixed lens (2.8 mm, 3.6mm, 8mm optional)
- Max. IR LEDs length 30m, Smart IR
- IP66, DC12V
- Material: Metal

**HAC-HFW1100RM**

**NEW**



**1MP 720P Water-proof HDCVI IR-Bullet Camera**

- 1/2.9" 1Mp CMOS, ICR
- 25/30fps@720P
- 3.6mm fixed lens (6mm optional)
- Max. IR LEDs length 20m, Smart IR
- IP66, DC12V
- Material: Metal

**HAC-HFW1100R**



**1MP 720P Water-proof HDCVI IR-Bullet Camera**

- 1/2.9" 1Mp CMOS, ICR
- 25/30fps@720P
- 3.6mm fixed lens (6mm optional)
- Max. IR LEDs length 20m, Smart IR
- IP66, DC12V
- Material: Plastic

**HAC-HDBW1100E**

**NEW**



**1MP 720P Vandal-proof IR HDCVI Mini Dome Camera**

- 1/2.9" 1Mp CMOS, ICR
- 25/30fps@720P
- 3.6mm fixed lens (2.8mm, 6mm, 8mm optional)
- Max. IR LEDs length 30m, Smart IR
- IP66, IK10, DC12V
- Material: Metal

**HAC-HDW1100M**



**1MP 720P Water-proof IR HDCVI Mini Dome Camera**

- 1/2.9" 1Mp CMOS, ICR
- 25/30fps@720P
- 3.6mm fixed lens (2.8mm, 6mm, 8mm optional)
- Max. IR LEDs length 30m, Smart IR
- IP66, DC12V
- Material: Metal

**HAC-HDW1100S**



**1MP 720P IR HDCVI Mini Dome Camera**

- 1/2.9" 1Mp CMOS, ICR
- 25/30fps@720P
- 3.6mm fixed lens (2.8mm, 6mm, 8mm optional)
- Max. IR LEDs length 30m, Smart IR
- DC12V
- Material: Plastic

**HAC-HDW1100C**



**1MP 720P IR  
HDCVI Mini Dome Camera**

- 1/2.9" 1Mp CMOS, ICR
- 25/30fps@720P
- 3.6mm fixed lens (2.8mm, 6mm, 8mm optional)
- Max. IR LEDs length 20m, Smart IR
- DC12V
- Material: Plastic

**HAC-HDW1100R**



**1MP 720P IR  
HDCVI Mini Dome Camera**

- 1/2.9" 1Mp CMOS, ICR
- 25/30fps@720P
- 3.6mm fixed lens (6mm optional)
- Max. IR LEDs length 20m, Smart IR
- DC12V
- Material: Plastic

**HAC-HFW1000S**

**NEW**



**1MP 720P Water-proof IR  
HDCVI Camera**

- 1/4" 1Mp CMOS, ICR
- 25/30fps@720P
- 3.6mm fixed lens
- Max. IR LEDs length 30m, Smart IR
- IP66, DC12V
- Material: Metal

**HAC-HFW1000RM**

**NEW**



**1MP 720P Water-proof  
HDCVI IR-Bullet Camera**

- 1/4" 1Mp CMOS, ICR
- 25/30fps@720P
- 3.6mm fixed lens
- Max. IR LEDs length 20m, Smart IR
- IP66, DC12V
- Material: Metal

**HAC-HFW1000R**

**NEW**



**1MP 720P Water-proof  
HDCVI IR-Bullet Camera**

- 1/4" 1Mp CMOS, ICR
- 25/30fps@720P
- 3.6mm fixed lens
- Max. IR LEDs length 20m, Smart IR
- IP66, DC12V
- Material: Plastic

**HAC-HDW1000M**

**NEW**



**1MP 720P Water-proof IR  
HDCVI Mini Dome Camera**

- 1/4" 1Mp CMOS, ICR
- 25/30fps@720P
- 3.6mm fixed lens
- Max. IR LEDs length 30m, Smart IR
- IP66, DC12V
- Material: Metal

**• Pinhole Camera — 720P**

**HAC-HDW1000R**

**NEW**



**1MP 720P IR  
HDCVI Mini Dome Camera**

- 1/4" 1Mp CMOS, ICR
- 25/30fps@720P
- 3.6mm fixed lens
- Max. IR LEDs length 20m, Smart IR
- DC12V
- Material: Plastic

**HAC-HUM3101B**



**1MP 720P IR  
HDCVI Pinhole Camera**

- 1/3" 1Mp CMOS
- 25/30@720P
- WDR(120dB), OSD, Audio
- 3.6mm fixed lens
- DC12V
- Material: Metal

**HAC-HUM3100B**



**1MP 720P IR  
HDCVI Pinhole Camera**

- 1/2.9" 1Mp CMOS
- 25/30@720P
- OSD, Audio
- 3.6mm fixed lens
- DC12V
- Material: Metal

**HDCVI PTZ Camera**

**• 1080P**

**SD6A220K/230K-HC**

**NEW**

**2MP Full HD 20x/30x  
HDCVI IR PTZ Dome Camera**

- 1/2.8" 2Mp Exmor CMOS
- Max 25/30fps@1080P, 50/60fps@720P
- 4.7~94mm 20x optical zoom(220K), 4.6~138mm 30x optical zoom(230K)
- Max 240 °/s pan speed
- 2D/3D DNR, DWDR
- 2/1 ch alarm in/out
- IP 66, -40~70°C
- IR Distance up to 150m



**SD6C220K/230K-HC**

**NEW**

**2MP Full HD 20x/30x  
HDCVI IR PTZ Dome Camera**

- 1/2.8" 2Mp Exmor CMOS
- Max 25/30fps@1080P, 50/60fps@720P
- 4.7~94mm 20x optical zoom(220K), 4.6~138mm 30x optical zoom(230K)
- Max 240 °/s pan speed
- 2D/3D DNR, DWDR
- 2/1ch alarm in/out
- IP 66, -40~60°C
- IR Distance up to 100m



**SD59212K/220K/230K-HC**

**NEW**

**2MP Full HD 12x/20x/30x  
HDCVI IR PTZ Dome Camera**

- 1/2.8" 2Mp Exmor CMOS
- Max 25/30fps@1080P, 50/60fps@720P
- 5.1~61.2mm 12x optical zoom (212K), 4.7~94mm 20x optical zoom(220K), 4.6~138mm 30x optical zoom(230K)
- Max 400 °/s pan speed
- 2D/3D DNR, DWDR
- 2/1ch alarm in/out
- IP 66, -40~70°C
- IR Distance up to 100m



**SD50220K/230K-HC  
SD52C220K/230K-HC**

**NEW**



**2Mp Full HD 20x/30x  
HDCVI PTZ Dome Camera**

- 1/2.8" 2Mp Exmor CMOS
- Max 25/30fps@1080P, 50/60fps@720P
- 4.7~94mm 20x optical zoom(220K), 4.6~138mm 30x optical zoom(230K)
- Max 500 %/s pan speed
- 2D/3D DNR , DWDR
- 2/1ch alarm in/out
- IP 67(outdoor), IK10, -40~60°C(Outdoor), -20~60°C(Indoor)

**• 720P**

**SD40/42/42C212K-HC**

**NEW**



**2Mp Full HD 12x  
HDCVI PTZ Dome Camera**

- 1/2.8"2M Exmor CMOS
- Max 25/30fps@1080P, 50/60fps@720P
- 5.1~61.2mm 12x optical zoom
- Max 300 %/s pan speed
- 2D/3D DNR , DWDR
- 2/1ch alarm in/out
- IP 66(40/42), IK 10 optional, -40~60°C (40), -20~60°C (42/42C)

**SD22204K-GC**

**NEW**



**2Mp Full HD 4x  
HDCVI Mini PTZ Dome Camera**

- 1/2.7" 2Mp CMOS
- Max 25/30fps@1080P, 50/60fps@720P
- 2.7~11mm 4x optical zoom
- 0~355° pan range, 0~90° tilt range
- Max 100°/s Pan speed
- 2D/3D DNR , DWDR
- IP66,IK10, -20~60°C

**SD6A120K-HC**

**NEW**



**720P 20x HDCVI  
IR PTZ Dome Camera**

- 1/3" Exmor CMOS
- Max 50/60fps@720P
- 4.7~94mm 20x optical zoom
- Max 240 %/s pan speed
- 2D/3D DNR , DWDR
- 2/1 ch alarm in/out
- IP 66, -40~70°C
- IR Distance up to 150m

**SD6C120K-HC**

**NEW**



**720P 20x HDCVI  
IR PTZ Dome Camera**

- 1/3"Exmor CMOS
- Max 50/60fps@720P
- 4.7~94mm 20x optical zoom
- Max 240 %/s pan speed
- 2D/3D DNR,DWDR
- 2/1ch alarm in/out
- IP 66, -40~60°C
- IR Distance up to 100m

**SD59112K/120K-HC**

**NEW**



**720P 12x/20x HDCVI  
IR PTZ Dome Camera**

- 1/3"Exmor CMOS
- Max 50/60fps@720P
- 5.1~61.2mm 12x optical zoom(112K), 4.7~94mm 20x optical zoom(120K)
- Max 400 %/s pan speed
- 2D/3D DNR,DWDR
- 2/1ch alarm in/out
- IP 66, -40~70°C
- IR Distance up to 100m

**SD50/52C120K-HC**

**NEW**



**720P 20x  
HDCVI PTZ Dome Camera**

- 1/3"Exmor CMOS
- Max 50/60fps@720P
- 4.7~94mm 20x optical zoom
- Max 500 %/s pan speed
- 2D/3D DNR, DWDR
- 2/1ch alarm in/out
- IP 67(outdoor), IK10, -40~60°C(Outdoor), -20~60°C(Indoor)

**SD40/42/42C112K-HC**

**NEW**



**720P 12x  
HDCVI PTZ Dome Camera**

- 1/3"Exmor CMOS
- Max 50/60fps@720P
- 5.1~61.2mm 12x optical zoom
- Max 300 %/s pan speed
- 2D/3D DNR, DWDR
- 2/1ch alarm in/out
- IP 66(40/42), IK 10 optional, -40~60°C (40), -20~60°C (42/42C)

**SD22104K-GC**

**NEW**



**720P 4x  
HDCVI Mini PTZ Dome Camera**

- 1/3" Exmor CMOS
- Max 50/60fps@720P
- 2.7~11mm 4x optical zoom
- 0~355° pan range, 0~90° tilt range
- Max 100°/s Pan speed
- 2D/3D DNR , DWDR
- IP66,IK10, -20~60°C

**HDCVI DVR**

**• 1080P**

**HCVR7804/7808/7816S**



**4/8/16CH Tribrid 2U HDCVI DVR**

- Tribrid: Each channel supports HDCVI/Analog/IP video input
- All channel@1080P realtime recording
- 4/8ch sync realtime playback
- 2 HDMI, VGA output up to 1080p, 1 TV
- 4/8/16ch audio in&1ch audio out, 1/1ch Mic in/out
- 4/8/16ch alarm in&6ch relay out, RS485,RS232
- 8 SATA, 1 eSATA, 4 USB, 2 RJ45(1000M)

**HCVR7404/7408/7416L**



**4/8/16CH Tribrid 1.5U HDCVI DVR**

- Tribrid: Each channel supports HDCVI/Analog/IP video input
- All channel@1080P realtime recording
- 4/8ch sync realtime playback
- 2 HDMI, VGA output up to 1080p, 1 TV
- 4ch audio in&1ch audio out, 1/1ch Mic in/out
- 4/8/16ch alarm in&6ch relay out, RS485,RS232
- 4 SATA, 1 eSATA, 3 USB, 1 RJ45(1000M)

**HCVR7204/7208/7216A-S2**

**NEW**



**4/8/16CH Tribrid 1U HDCVI DVR**

- Tribrid: Support HDCVI/Analog/IP video input
- All channel@1080P realtime recording
- 4/8/16ch sync realtime playback
- 1 HDMI, VGA output up to 1080p
- 4ch audio in&1ch audio out, 1/1ch Mic in/out
- 8/16/16ch alarm in&3ch relay out, RS485
- 2 SATA, 2 USB, 1 RJ45

**HCVR7216AN-S2**

**NEW**



**16CH Tribrid 1U HDCVI DVR**

- Tribrid: Support HDCVI/Analog/IP video input
- All channel@1080P realtime recording
- 16ch sync realtime playback
- 1 HDMI, VGA output up to 1080p
- 1ch audio in&1ch audio out, 1/1ch Mic in/out
- 2 SATA, 2 USB, 1 RJ45, RS485

**HCVR7104/7108HE-S2**

**NEW**



**4/8CH Tribrid Mini 1U HDCVI DVR**

- Tribrid: Support HDCVI/Analog/IP video input
- All channel@1080P realtime recording
- 4/8ch sync realtime playback
- 1 HDMI, VGA output up to 1080p
- 4ch audio in&1ch audio out, 1/1ch Mic in/out
- 8/16ch alarm in&3ch relay out, RS485
- 1 SATA, 2 USB, 1 RJ45

**HCVR7104/7108H-S2**

**NEW**



**4/8CH Tribrid Mini 1U HDCVI DVR**

- Tribrid: Support HDCVI/Analog/IP video input
- All channel@1080P realtime recording
- 4/8ch sync realtime playback
- 1 HDMI, VGA output up to 1080p
- 1ch audio in&1ch audio out, 1/1ch Mic in/out
- 1 SATA, 2 USB, RS485, 1 RJ45

**• 720P — Pro**

**HCVR7104C-S2**

**NEW**



**4CH Tribrid Smart 1U HDCVI DVR**

- Tribrid: Support HDCVI/Analog/IP video input
- All channel@1080P realtime recording
- 4ch sync realtime playback
- 1 HDMI, VGA output up to 1080p
- 1 SATA, 2 USB, 1 RJ45

**HCVR5824/5832S-S2**

**NEW**



**24/32CH 2U HDCVI DVR**

- Tribrid: Support HDCVI/Analog/IP video input
- All channel 720P realtime or 1080P non-realtime recording
- 16ch sync realtime playback
- 2 HDMI, VGA output up to 1080p, 1 TV
- 16ch audio in&1ch audio out, 1/1ch Mic in/out
- 16ch alarm in&6ch relay out, RS485,RS232
- 8 SATA, 1 eSATA, 4 USB, 2 RJ45(1000M)

**HCVR5424/5432L-S2**

**NEW**



**24/32CH 1.5U HDCVI DVR**

- Tribrid: Support HDCVI/Analog/IP video input
- All channel 720P realtime or 1080P non-realtime recording
- 16ch sync realtime playback
- 2 HDMI, VGA output up to 1080p, 1 TV
- 4ch audio in&1ch audio out, 1/1ch Mic in/out
- 16ch alarm in&6ch relay out, RS485,RS232
- 4 SATA, 1 eSATA, 3 USB, 1 RJ45(1000M)

**HCVR5804/5808/5816S-V2**



**4/8/16CH Tribrid 2U HDCVI DVR**

- Tribrid: Support HDCVI/Analog/IP video input
- All channel 720P realtime or 1080P non-realtime recording
- 4/8/16ch sync realtime playback
- 1 HDMI,VGA output up to 1080p,1 TV
- 4/8/16ch audio in&1ch audio out, 1/1ch Mic in/out
- 4/8/16ch alarm in&6ch relay out, RS485,RS232
- 8 SATA, 1 eSATA, 4 USB, 2 RJ45(1000M)

**HCVR5404/5408/5416L-V2**



**4/8/16CH Tribrid 1.5U HDCVI DVR**

- Tribrid: Support HDCVI/Analog/IP video input
- All channel@720P realtime or 1080P non-realtime recording
- 4/8/16ch sync realtime playback
- 1 HDMI,VGA output up to 1080p,1 TV
- 4ch audio in&1ch audio out, 1/1ch Mic in/out
- 4/8/16ch alarm in&6ch relay out, RS485,RS232
- 4 SATA, 1 eSATA, 3 USB, 1RJ45(1000M)

**HCVR5204/5208/5216A-S2**

**NEW**



**4/8/16CH Tribrid 1U HDCVI DVR**

- Tribrid: Support HDCVI/Analog/IP video input
- All channel@720P realtime or 1080P non-realtime recording
- 4/8/16ch sync realtime playback
- 1 HDMI, VGA output up to 1080p
- 4ch audio in&1ch audio out, 1/1ch Mic in/out
- 8/8/16ch alarm in&3ch relay out, RS485
- 2 SATA, 2 USB, 1 RJ45

**HCVR5216AN-S2**

**NEW**



**16CH Tribrid 1U HDCVI DVR**

- Tribrid: Support HDCVI/Analog/IP video input
- All channel@720P realtime or 1080P non-realtime recording
- 16ch sync realtime playback
- 1 HDMI, VGA output up to 1080p
- 1ch audio in&1ch audio out, 1/1ch Mic in/out
- 2 SATA, 2 USB, 1 RJ45, RS485

**HCVR5104/5108/5116HE-S2**

**NEW**



**4/8/16CH Tribrid 1U HDCVI DVR**

- Tribrid: Support HDCVI/Analog/IP video input
- All channel@720P realtime or 1080P non-realtime recording
- 4/8/16ch sync realtime playback
- 1 HDMI, VGA output up to 1080p
- 4ch audio in&1ch audio out, 1/1ch Mic in/out
- 4/8/16ch alarm in&3ch relay out, RS485
- 1 SATA, 2 USB, 1 RJ45, RS485

**HCVR5104/5108/5116H-S2**

**NEW**



**4/8/16CH Tribrid Mini 1U HDCVI DVR**

- Tribrid: Support HDCVI/Analog/IP video input
- All channel@720P realtime or 1080P non-realtime recording
- 4/8/16ch sync realtime playback
- 1 HDMI, VGA output up to 1080p
- 1ch audio in&1ch audio out, 1/1ch Mic in/out
- 1 SATA, 2 USB, RS485, 1 RJ45

• 720P — Lite

**HCVR5104/5108C-S2**

**NEW**



**4/8CH Tribrid Smart 1U HDCVI DVR**

- Tribrid: Support HDCVI/Analog/IP video input
- All channel@720P realtime or 1080P non-realtime recording
- 4/8ch sync realtime playback
- 1 HDMI, VGA output up to 1080p
- 1ch audio in&1ch audio out, 1/1ch Mic in/out
- 1 SATA, 2 USB, 1 RJ45

**HCVR504**



**4CH Smart Box HDCVI DVR**

- 4ch video input
- All channel 720P realtime or 1080P non-realtime recording
- 4ch sync realtime playback
- 1 HDMI, VGA output up to 1080p
- 1ch audio in&1ch audio out
- 1 SATA, 2 USB, 1 RJ45

**HCVR4804/4808/4816S-S2**

**NEW**



**4/8/16CH Tribrid 2U HDCVI DVR**

- Tribrid: Support HDCVI/Analog/IP video input
- All channel 720P recording
- 4/8/16ch sync playback
- 1 HDMI, VGA output up to 1080p, 1 TV
- 4/8/16ch audio in&1ch audio out, 1/1ch Mic in/out
- 8/8/16ch alarm in&6ch relay out, RS485, RS232
- 8 SATA, 1 eSATA, 4 USB, 1 RJ45(1000M)

**HCVR4404/4408/4416L-S2**

**NEW**



**4/8/16CH Tribrid 1.5U HDCVI DVR**

- Tribrid: Support HDCVI/Analog/IP video input
- All channel 720P recording
- 4/8/16ch sync playback
- 1 HDMI, VGA output up to 1080p, 1 TV
- 4ch audio in&1ch audio out, 1/1ch Mic in/out
- 8/8/16ch alarm in&6ch relay out, RS485, RS232
- 4 SATA, 1 eSATA, 3 USB, 1 RJ45(1000M)

**HCVR4224/4232L-S2**

**NEW**



**24/32CH Tribrid 1.5U HDCVI DVR**

- Tribrid: Support HDCVI/Analog/IP video input
- All channel@720P recording
- 16ch sync playback
- 1 HDMI, VGA output up to 1080p, 1TV
- 4ch audio in&1ch audio out, 1/1ch Mic in/out
- 16ch alarm in&3ch relay out, RS485, RS232
- 2 SATA, 2 USB, RS485, 1 RJ45(1000M)

**HCVR4216/4224/4232AN-S2**

**NEW**



**16/24/32CH Tribrid 1U HDCVI DVR**

- Tribrid: Support HDCVI/Analog/IP video input
- All channel@720P recording
- 16ch sync playback
- 1 HDMI, VGA output up to 1080p, 1TV
- 1ch audio in&1ch audio out, 1/1ch Mic in/out
- 2 SATA, 2 USB, 1 RJ45, RS485

**HCVR4204/4208/4216A-S2**

**NEW**



**4/8/16CH Tribrid 1U HDCVI DVR**

- Tribrid: Support HDCVI/Analog/IP video input
- All channel@ 720P recording
- 4/8/16ch sync playback
- 1 HDMI, VGA output up to 1080p
- 4ch audio in&1ch audio out, 1/1ch Mic in/out
- 8/8/16ch alarm in&3ch relay out, RS485
- 2 SATA, 2 USB, 1 RJ45

**HCVR4104/4108/4116HE-S2**

**NEW**



**4/8/16CH Tribrid Mini 1U HDCVI DVR**

- Tribrid: Support HDCVI/Analog/IP video input
- All channel@720P recording
- 4/8/16ch sync playback
- 1 HDMI, VGA output up to 1080p
- 4ch audio in&1ch audio out, 1/1ch Mic in/out
- 4/8/16ch alarm in&3ch relay out
- 1 SATA, 2 USB, 1 RJ45, RS485

**HCVR4104/4108/4116HS-S2**

**NEW**



**4/8/16CH Tribrid Compact 1U HDCVI DVR**

- Tribrid: Support HDCVI/Analog/IP video input
- All channel@720P recording
- 4/8/16ch sync playback
- 1 HDMI, VGA output up to 1080p
- 1ch audio in&1ch audio out, 1/1ch Mic in/out
- 1 SATA, 2 USB, 1 RJ45, RS485

• iHCVR

**HCVR4104/4108C-S2**

**NEW**



**4/8CH Tribrid Smart 1U HDCVI DVR**

- Tribrid: Support HDCVI/Analog/IP video input
- All channel@720P recording
- 4/8ch sync playback
- 1 HDMI, VGA output up to 1080p
- 1 SATA, 2 USB, 1 RJ45

**iHCVR5104/5108HE-F**



**4/8CH Mini 1U Face Detection iHCVR**

- Support face detection, instant playback and face index playback
- Detected face images can be uploaded to the free "Easy Space"
- Support P2P network connection through scanning QR code
- All channel@720P realtime recording
- 1 HDMI, 1 VGA, 1ch audio in
- 4/8ch alarm in&3ch alarm out, 1 SATA, 2 USB, 1 RJ45

**iHCVR5104/5108H-F**



**4/8CH Mini 1U Face Detection iHCVR**

- Support face detection, instant playback and face index playback
- Detected face images can be uploaded to the free "Easy Space"
- Support P2P network connection through scanning QR code
- All channel@720P realtime recording
- 1 HDMI, 1 VGA, 1ch audio in, 1 SATA, 2 USB, 1 RJ45

## Analog Camera

### • HDIS Series

#### CA-FW181R-VF



#### HDIS Day/Night Water-proof IR-Bullet Camera

- 720TVL, 1/3" HDIS, ICR
- Lens: 2.7~12mm vari-focal lens
- IR LEDs: 30m, Smart IR
- IP66, DC12V
- Material: Metal

#### CA-DBW181R-VF



#### HDIS Day/Night Vandal-proof IR Dome Camera

- 720TVL, 1/3" HDIS, ICR
- Lens: 2.7~12mm vari-focal lens
- IR LEDs: 30m, Smart IR
- IP66, IK10, DC12V
- Material: Metal

#### CA-DW181R-VF



#### HDIS Day/Night IR Dome Camera

- 720TVL, 1/3" HDIS, ICR
- Lens: 2.7~12mm vari-focal lens
- IR LEDs: 30m, Smart IR
- IP66, DC12V
- Material: Metal

#### CA-FW181I



#### HDIS Day/Night Water-proof IR-Bullet Camera

- 720TVL, 1/3" HDIS
- Lens: 6mm (2.8mm, 3.6mm, 8mm optional)
- IR LEDs: 20m, Smart IR
- IP66, DC12V
- Material: Metal
- Default: with Bracket

#### CA-FW181R



#### HDIS Day/Night Water-proof Mini IR-Bullet Camera

- 720TVL, 1/3" HDIS, ICR
- Lens: 3.6mm (6mm optional)
- IR LEDs: 20m, Smart IR
- IP66, DC12V
- Material: Plastic

#### CA-FW181G



#### HDIS Day/Night Water-proof IR Bullet Camera

- 720TVL, 1/3" HDIS, ICR
- Lens: 6mm (2.8 mm, 3.6mm, 8mm optional)
- IR LEDs: 20m, Smart IR
- IP66, DC12V
- Default: with Bracket
- Material: Metal

#### CA-DBW183H



#### HDIS Mini Dome Camera

- 720TVL, 1/3" HDIS, ICR
- Lens: 3.6mm (2.8mm, 6mm optional)
- Max. IR LEDs length 20m, Smart IR
- IK08, DC12V
- Material: Metal

#### CA-DW181R



#### HDIS Day/Night IR Mini Dome Camera

- 720TVL, 1/3" HDIS, ICR
- Lens: 3.6mm (6mm optional)
- IR LEDs: 20m, Smart IR
- DC12V
- Material: Plastic

#### CA-DW181E



#### HDIS Water-proof IR Mini Dome Camera

- 720TVL, 1/3" HDIS, ICR
- 3.6mm fixed lens (2.8mm, 6mm, 8mm optional)
- Max. IR LEDs length 20m, Smart IR
- IP66, DC12V
- Material: Metal (inner core) + Plastic (outside)

## Analog PTZ Camera

### • High Speed Dome

#### SD6523E/36E-H SD6323C/23E/36E-H



#### 23x/36x PTZ Dome Camera

- 1/4" CMOS, 540TVL, 23x optical zoom(23C)
- 1/4" 960H CCD, 650TVL, 23x/36x optical zoom(23E/36E)
- DWDR(23E/36E), D&N(ICR), DNR (2D&3D)
- Max 400°/s pan speed (SD65)
- Max 300°/s pan speed (SD63)
- IP 67(SD65 Outdoor), IP66 (SD63), IK 10, optional -40~60°C(Outdoor), -20~60°C(Indoor)

#### SD5023E/36E-H SD52C23E/36E-H



#### 23x/36x Ultra-high Speed PTZ Dome Camera

- 1/4" CCD, 650TVL, 23x/36x optical zoom
- Max 500 °/s pan speed
- DWDR, D&N(ICR), DNR(2D&3D)
- 2/1ch alarm in/out
- IP 67(Outdoor), IK 10, -40~60°C(Outdoor), -20~60°C(Indoor)

#### SD40/42/42C23-H SD40/42/42C23C-H



#### 23x Mini PTZ Dome Camera

- 1/4" CCD, 650TVL (23)
- 1/4" CMOS, 540TVL (23C)
- 3.9~89.7mm 23x optical zoom
- Max 300 °/s pan speed
- DWDR, D&N(ICR), DNR(2D&3D)
- 2/1ch alarm in/out
- IP 66(40/42), IK 10, -40~60°C(40), -20~60°C(42/42C)

• IR High Speed Dome

**SD6A23E/36E-H**



**23x/36x IR PTZ Dome Camera**

- 1/4" 960H CCD, 650TVL, 23x/36x optical zoom
- DWDR, D&N(ICR), DNR (2D&3D)
- Max 240°/s pan speed
- 7/2ch alarm in/out
- IP 66, -40~60°C
- IR Distance up to 150m

**SD6C23C/23E/36E-H**



**23x/36x Cost-effective IR PTZ Dome Camera**

- 1/4" CMOS, 540TVL, 23x optical zoom(23C)  
1/4" 960H CCD, 650TVL, 23x/36x optical zoom(23E/36E)
- DWDR(23E/36E), D&N(ICR), DNR (2D&3D)
- Max 240°/s pan speed
- IP 66, -40~60°C
- IR Distance up to 100m

**SD5923C/23E/36E-H**



**23x/36x Ultra-high Speed IR PTZ Dome Camera**

- 1/4" CMOS, 540TVL, 23x optical zoom(23C)  
1/4" 960H CCD, 650TVL, 23x/36x optical zoom(23E/36E)
- DWDR(23E/36E), D&N(ICR), DNR (2D&3D)
- Max 400°/s pan speed
- IP 66, -40~70°C
- IR Distance up to 100m

**DVR**

• Premium DVR

**DVR7824/7832S**



**24/32CH 960H 2U DVR**

- 24/32ch video inputs
- All channel@960H realtime recording
- 2 HDMI, VGA output up to 1080p, 1 TV, 1 Spot
- 16ch audio in&1ch audio out, 1/1ch Mic in/out
- 16ch alarm in&6ch relay out, RS485,RS232
- 16ch sync realtime playback
- 8 SATA, 1 eSATA, 4 USB, 2 RJ45(1000M)

**DVR7424/7432L**



**24/32CH 4HDD 960H 1.5U DVR**

- 24/32ch video inputs
- All channel@960H realtime recording
- 2HDMI, VGA output up to 1080p, 1 TV, 1 Spot
- 4ch audio in&1ch audio out, 1/1ch Mic in/out
- 16ch alarm in&6ch relay out, RS485,RS232
- 16ch sync realtime playback
- 4 SATA, 1 eSATA, 3 USB, 1 RJ45(1000M)

• Professional DVR

**DVR7808/7816S-URH**



**16/32CH 960H&IP 2U Hybrid DVR With Removable HDDs**

- 8/16ch 960H video & 8/16ch IP camera inputs
- 960H:8/16ch@960H realtime recording
- IPC: Max 160Mbps Bit Rate input
- 2HDMI, VGA output up to 1080p, 1 TV, 1 Spot, 8/16 Loop
- 8/16ch audio in&1ch audio out, 1/1ch Mic in/out
- 8/16ch alarm in&6ch relay out, RS485,RS232
- 16ch sync realtime playback
- 8 SATA(Hot-Swap HDD), 1 eSATA, 4 USB, 2 RJ45(1000M)
- Support RAID0, RAID1, RAID10, RAID5

• Lite DVR

**DVR7804/7808/7816S-U**



**8/16/32CH 960H&IP 2U Hybrid DVR**

- 4/8/16ch 960H video & 4/8/16ch IP camera inputs
- 960H : 4/8/16ch@960H realtime recording
- IPC: Max 160Mbps incoming bandwidth
- 2HDMI, VGA output up to 1080p, 1 TV, 1 Spot, 4/8/16 Loop
- 4/8/16ch audio in&1ch audio out, 1/1ch Mic in/out
- 4/8/16ch alarm in&6ch relay out, RS485,RS232
- 16ch sync realtime playback
- 8 SATA, 1 eSATA, 4 USB, 2 RJ45(1000M)

**DVR5804/5808/5816**



**4/8/16CH 960H 2U DVR**

- 4/8/16ch video inputs
- All channel@960H realtime recording
- 1 HDMI, VGA output up to 1080p, 1 TV, 1 Spot
- 4/8/16ch audio in&1ch audio out, 1/1ch Mic in/out
- 4/8/16ch alarm in&3ch relay out, RS485,RS232
- 4/8/16ch sync realtime playback
- 8 SATA, 1 eSATA, 4 USB, 1 RJ45(1000M)

**DVR5204/5208/5216A**



**4/8/16CH 960H 1U DVR**

- 4/8/16ch video inputs
- All channel@960H realtime recording
- 1 HDMI, VGA output up to 1080p, 1 TV, 1 Spot
- 4ch audio in&1ch audio out, 1/1ch Mic in/out
- 4/8/16ch alarm in&3ch relay out, RS485,RS232
- 4/8/16ch sync realtime playback
- 2 SATA, 2 USB, 1 RJ45(1000M)

**DVR5104/5108/5116HE(H)**



**4/8/16CH 960H Mini 1U DVR**

- 4/8/16ch video inputs
- All channel@960H realtime recording
- 1 HDMI, VGA output up to 1080p, 1 TV
- 4ch audio in&1ch audio out
- 4/8/16ch alarm in&3/3/1ch relay out, RS485
- 4/8/16ch sync realtime playback
- 1 SATA, 2 USB, 1 RJ45(100M)

\* H: No alarm and 1ch audio in

**DVR504**



**4CH 960H Smart Box DVR**

- 4ch video inputs
- All channel@960H realtime recording
- 1 HDMI, VGA output up to 1080p
- 1ch audio in&1ch audio out
- 4ch sync realtime playback
- 1 SATA(2.5-inch removable HDD), 2 USB, 1 RJ45(100M)

**DVR2104/2108/2116HE(H)-V2**



**4/8/16CH 2CIF Mini 1U DVR**

- 4/8/16ch video inputs
- All channel@2CIF realtime recording or up to 960H recording
- 1 HDMI, VGA output up to 1080p, 1 TV
- 4ch audio in&1ch audio out, 1RS485
- 4/8/16ch alarm in&3/3/1ch relay out
- 4/8/16ch sync realtime playback
- 1 SATA, 2 USB, 1 RJ45(100M)

\* H: No alarm and 1ch audio in



• iDVR

**DVR2104/2108/2116C-V2**



**4/8/16CH 2CIF Smart 1U DVR**

- 4/8/16ch video inputs
- All channel@2CIF realtime recording or up to 960H recording
- 1 HDMI, VGA output up to 1080p, 1 TV
- 1ch audio in&1ch audio out
- 4/8/16ch sync realtime playback
- 1 SATA, 2 USB, 1 RJ45(100M)

**iDVR5104/5108/5116HE-F**



**4/8/16ch 960H Mini 1U Face Detection iDVR**

- Support face detection, instant playback and face index playback
- Detected face images can be uploaded to the free "Easy Space"
- Support P2P network connection through scanning QR code
- All channel@960H realtime recording
- 1 HDMI,1 VGA, 1 TV, 4 audio in, 4/8/16 alarm in & 3/3/1 alarm out, 1 SATA, 2 USB, 1 RJ45(100M)

**iDVR5104/5108/5116H-F**



**4/8/16ch 960H Mini 1U Face Detection iDVR**

- Support face detection, instant playback and face index playback
- Detected face images can be uploaded to the free "Easy Space"
- Support P2P network connection through scanning QR code
- All channel@960H realtime recording
- 1 HDMI, 1 VGA, 1 TV,1 audio in, 1 SATA, 2 USB, 1 RJ45(100M)

**Special Products**

• Mobile IPC

**IPC-HDBW4421F-M**

**NEW**



**4MP Full HD WDR Network Vandal-proof Wedge Dome Camera**

- 1/3" 4Mp CMOS
- H.264 & MJPEG dual-stream encoding
- Max 20fps@4M,25/30fps@3M
- Lens: 3.6mm (2.8mm, 6mm optional)
- D&N(ICR), 3D-DNR, Micro SD,IR LEDs: 20m
- Built-in Mic, WDR(up to 120 dB)
- IP67, IK10, DC12V, PoE
- Material: Metal

**IPC-HDBW4221F-M**

**NEW**



**2MP Full HD WDR Network Vandal-proof Wedge Dome Camera**

- 1/2.7" 2Mp CMOS
- H.264 & MJPEG dual-stream encoding
- Max 25/30fps@1080P
- Lens: 3.6mm (2.8mm, 6mm optional)
- D&N(ICR), 3D-DNR, IR LEDs: 20m
- Built-in Mic, WDR(up to 120 dB)
- IP67, IK10, DC12V, PoE
- Material: Metal

**IPC-HDBW4121F-M**

**NEW**



**1.3MP HD WDR Network Vandal-proof Wedge Dome Camera**

- 1/3" 1.3Mp CMOS
- H.264 & MJPEG dual-stream encoding
- Max 25/30fps@1.3M
- Lens: 3.6mm (2.8mm, 6mm optional)
- D&N(ICR), 3D-DNR, IR LEDs: 20m
- Built-in Mic, WDR(up to 120 dB)
- IP67, IK10, DC12V, PoE
- Material: Metal

**IPC-HDB4200C-M**

**NEW**



**2MP Full HD Network Vandal-proof Dome Camera**

- 1/2.8" 2Mp Exmor CMOS
- H.264 & MJPEG dual-stream encoding
- Max25/30fps@1080P
- Lens: 3.6mm (2.8mm, 6mm optional)
- D&N(Electronic), 3D-DNR, Micro SD
- Built-in Mic
- IK10, DC12V, PoE
- Material: Metal

**IPC-HDB4100C-M**

**NEW**



**1.3MP HD Network Vandal-proof Dome Camera**

- 1/3" 1.3Mp CMOS
- H.264 & MJPEG dual-stream encoding
- Max 25/30fps@1.3M
- Lens: 3.6mm (2.8mm, 6mm optional)
- D&N(Electronic), 3D-DNR, Micro SD
- Built-in Mic
- IK10, DC12V, PoE
- Material: Metal

**NVR0404/0804MF**

**NEW**



**4/8CH PoE Mobile NVR**

- 4/8ch video inputs
- All channel@1080P realtime recording
- 1HDMI, 1 VGA output up to SXGA, 2TV
- 1/1ch Mic in/out
- 8ch alarm in&3ch relay out, RS485
- Video overlay of Car No., GPS, Speed
- GPS/Wi-Fi/3G/4G optional, 1 RJ45(1000M)
- 2 SATA(Vibration-proof), 1 eSATA, 3 USB
- 4/8 PoE ports, aviation connectors adopted
- Support extend storage port

• Mobile Camera — 720P

**HAC-HDBW2220F-M**

**NEW**



**2.4MP 1080P IR HDCVI Mobile Camera**

- 1/2.8" 2.4Mp CMOS, ICR, 3D-DNR
- 25/30fps@1080P, 25/30/50/60fps@720P
- HD/SD switch, OSD, DWDR
- 3.6mm fixed lens (6mm optional)
- Max. IR LEDs length 20m, Smart IR
- Aviation connector, Shock-proof
- Default: with Pickup
- IP66, IK10, DC12V
- Material: Metal

**HAC-HDBW2120F-M**

**NEW**



**1.4MP 720P IR HDCVI Mobile Camera**

- 1/3" 1.4Mp CMOS, ICR, 3D-DNR
- 25/30/50/60fps@720P
- HD/SD switch, OSD
- 3.6mm fixed lens (6mm, 8mm optional)
- Max. IR LEDs length 20m, Smart IR
- Aviation connector, Shock-proof
- Default: with Pickup
- IP66, IK10, DC12V
- Material: Metal

**MCVR5104**

**NEW**



**4CH Mobile HDCVI DVR**

- Support 4ch HDCVI/Analog Video input
- 2 channel 1080P+2 channel 720P realtime recording
- VGA/TV simultaneous video output
- 7ch alarm in&2ch relay out, RS485
- Video overlay of Car No., GPS, Speed
- GPS/Wi-Fi/3G/4G optional, 1 RJ45(100M)
- 1 SATA(Vibration-proof), 2 USB

**CA-MW183H**

**NEW**



**HDIS IR Mobile Dome Camera**

- 720TVL, 1/3" HDIS, ICR
- Lens: 3.6mm (2.8mm, 6mm optional)
- Max IR LEDs Length: 20m, Smart IR
- Aviation connector, shock-proof
- Default: with Pickup
- IK08, DC12V
- Material: Metal

**CA-M(W)181E**

**NEW**



**HDIS Mobile Dome Camera**

- 720TVL, 1/3" HDIS, ICR
- Lens: 3.6mm (2.8mm optional)
- Max. IR LEDs length 10m(MW181E)
- Aviation connector, shock-proof
- Default: with Pickup
- DC12V
- Material: Metal

**CA-MW181F/183F**

**NEW**



**HDIS IR Mobile Camera**

- 720TVL, 1/3" HDIS, ICR
- Lens: 2.1 mm (2.8mm optional)
- Max. IR LEDs length 10m
- Aviation connector, shock-proof
- Default: with Pickup(MW183F)
- Horizontal mirror
- IP67, DC12V
- Material: Metal

**• Mobile DVR**

**CA-M180G(-B)**



**HDIS Mobile Camera**

- 720TVL, 1/3" HDIS, ICR
- Lens: 2.1mm
- Aviation connector, shock-proof
- IP67, DC12V
- Material: Metal
- M180G-B: with plastic cover

**DVR0404ME-HE**



**4CH 960H Mobile DVR**

- 4ch video inputs
- All channel@960H realtime recording
- 1 VGA output up to SXGA, 2TV
- 4ch audio in&1ch audio out, 1/1ch Mic in/out
- 7ch alarm in&2ch relay out, RS485
- Video overlay of Car No., GPS, Speed
- GPS/Wi-Fi/3G/4G optional, 1 RJ45(1000M)
- 1 SATA(Vibration-proof), 2 USB

**DVR0404ME-UE**



**4CH Mobile DVR**

- 4ch video inputs
- 1ch@960H+3ch@CIF realtime recording
- 2TV sync output
- 4ch audio in &1ch audio out, 1/1ch Mic in/out
- 7ch alarm in&2ch relay out, RS485
- Video overlay of Car No., GPS, Speed
- GPS/Wi-Fi/3G/4G optional, 1 RJ45(100M)
- 1 SATA(Vibration-proof), 2 USB

**• ATM DVR**

**DVR0404/0804MF-H**



**4/8CH 960H Mobile DVR**

- 4/8ch video inputs
- All channel@960H realtime recording
- 1 VGA output up to SXGA, 2TV
- 4/8ch audio in &1/2ch audio out, 1/1ch Mic in/out
- 7ch alarm in&2ch relay out, RS485
- Video overlay of Car No., GPS, Speed
- GPS/Wi-Fi/3G/4G optional, 1 RJ45(1000M)
- 2 SATA(Vibration-proof), 1 eSATA, 2 USB

**DVR0404ME-SC**



**4CH 960H Mobile DVR**

- 4ch video inputs
- All channel@960H realtime recording
- 2TV sync output
- 4ch audio in &1ch audio out, 1/1ch Mic in/out
- 7ch alarm in&2ch relay out, RS485
- Video overlay of Car No., GPS, Speed
- GPS/Wi-Fi/3G/4G optional, 1 RJ45(100M)
- 1 SD card, 2 USB

**HCVR0404AH-VFD**

**NEW**



**4CH Tribrid ATM DVR**

- Tribrid: Support HDCVI/Analog/IP video input
- All channel@1080P realtime recording
- 1 HDMI, VGA output up to SXGA, 1 TV
- 4ch audio in&1ch audio out, 1/1ch Mic in/out
- 9ch alarm in&6ch relay out, RS485
- ATM/POS info live-view, recording & playback
- 4 SATA, 1 eSATA, 3 USB, 2 RJ45(1000M)
- Built-in 7-inch screen

**HCVR0404AG-VD**

**NEW**



**4CH Tribrid ATM DVR**

- Tribrid: Support HDCVI/Analog/IP video input
- All channel@720P realtime recording
- 1 HDMI, VGA output up to SXGA, 1 TV
- 4ch audio in&1ch audio out, 1/1ch Mic in/out
- 6ch alarm in&3ch relay out, RS485
- ATM/POS info live-view, recording & playback
- 4 SATA, 1 eSATA, 3 USB, 2 RJ45(1000M)
- Built-in 7-inch screen

**DVR0404/0804AH-V(D)**



**4/8CH 960H ATM DVR**

- 4/8ch video inputs
- All channel@960H realtime recording
- 1 HDMI, VGA output up to SXGA, 1 TV
- 4/8ch audio in&1ch audio out, 1/1ch Mic in/out
- 9ch alarm in&6ch relay out, RS485
- ATM/POS info live-view, recording & playback
- 4 SATA, 1 eSATA, 3 USB, 1 RJ45(1000M)
- Built-in 7-inch screen(-VD only)

**DVR0404AS-V(D)**



**4CH 960H ATM DVR**

- 4ch video inputs
- All channel@960H realtime recording
- 1 HDMI, VGA output up to SXGA, 1 TV
- 4ch audio in&1ch audio out
- 4ch alarm in&2ch relay out, RS485
- ATM/POS info live-view, recording & playback
- 2 SATA, 2 USB, 1 RJ45(100M)
- Built-in 7-inch screen(-VD only)

• Portable DVR

**MPT300**

**NEW**



**HD Mobile Portable Terminal**

- 8Mp built-in camera, Max 25fps@1080P
- Support TF card up to 64G
- One button to start record, snapshot, alarm, support PTT
- 4 inch LCD , resolution 854x480
- 4000mAh battery, support flashlight
- IP67, back splint ; Support fingerprint login
- Support earphone, mini USB, HDMI
- Support GPS, Bluetooth, Wi-Fi
- Support 3G, 4G (optional)
- \* Accessory: Infrared Camera, Charging base(optional)

**MEC-S300**

**NEW**



**Infrared Camera**

- Up to 30fps@720P resolution recording
- Support "one-button" to start record or take photos
- Automatically switching infrared mode according to environmental light
- Support laser positioning while shooting
- Wearable, easy to carry

**MAE-D100**

**NEW**



**Charging Base**

- Plug and play, connect with MPT300 to charge and data upload
- Provide mini USB and RJ45 port
- Support PoE
- Dimension : 110x105x40mm

**EVS**

• Network Video Storage

**EVS7048S-R**

**NEW**



**768 Channel Embedded Video Storage**

- Up to 768ch(1536Mbps) access, storage, transmit, 64ch(128Mbps)network playback
- 8G memory(up to 16G), 48HDDs.2 SAS interfaces
- Support RAID0/1/5/6/10/50/60/JBOD, hot-swappable
- ONVIF Version 2.0 conformance
- 2+2 Redundant power supply

**EVS5024S-R**

**NEW**



**512 Channel Embedded Video Storage**

- Up to 512ch(1024Mbps) access, storage, transmit, 64ch(128Mbps)network playback
- 4GB memory (with ECC verification)
- 24 hot-swap SATA III HDDs
- Support RAID0/1/5/6/10/50/60/JBOD, hot-swappable
- ONVIF Version 2.0 conformance
- Redundant Power supply

**EVS5000(-R)**



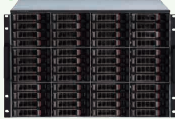
**128 Channel Embedded Video Storage**

- Up to 128ch(256Mbps) access, storage, transmit
- 64ch(128Mbps)network playback
- 4GB memory (with ECC verification)
- 16HDDs, 2 SAS interfaces
- Support RAID 0/1/5/6/10/JBOD, hot-swappable
- ONVIF Version 2.0 conformance
- \*-R: Redundant Power supply

**NAS**

• Network Storage

**ESS5048S(-R)**



**48 HDDs Network Storage**

- 1024 Mbps throughput
- 4GB RAM (expandable up to 8GB)
- 48 HDDs(each one up to 6TB), scale up to 720TB with 3 x ESS3124-J (by Mini SAS)
- Support RAID0/1/5/6/10/50/60/JBOD, hot-swappable
- RJ-45 Gigabit Ethernet ports x 5 (one for management)
- SAMBA, NFS, iSCSI, CIFS, FTP, HTTP
- \*-R: Redundant Power supply
- \*-S: Single controller

**ESS5024S/5024D(-R)**



**24 HDDs Network Storage**

- 1024 Mbps throughput
- ESS5024S: 4GB RAM (expandable up to 8GB) / ESS5024D: 16GB RAM (expandable up to 32GB)
- 24 HDDs(each one up to 6TB), scale up to 720TB with 4 x ESS3124-J (by Mini SAS)
- Support RAID0/1/5/6/10/50/60/JBOD, hot-swappable
- RJ-45 Gigabit Ethernet ports x 5 (one for management)
- SAMBA, NFS, iSCSI, CIFS, FTP, HTTP
- \*-R: Redundant Power supply
- \*-S/D: Single controller / Dual controller

**ESS5016S/5016D(-R)**



**16 HDDs Network Storage**

- 1024 Mbps throughput
- ESS5016S: 4GB RAM (expandable up to 8GB) / ESS5016D: 16GB RAM (expandable up to 32GB)
- 16 HDDs (each one up to 6TB), scale up to 672TB with 4 x ESS3124-J (by Mini SAS)
- Support RAID0/1/5/6/10/50/60/JBOD, hot-swappable
- RJ-45 Gigabit Ethernet ports x 5 (one for management)
- SAMBA, NFS, iSCSI, CIFS, FTP, HTTP
- \*-R: Redundant Power supply
- \*-S/D: Single controller / Dual controller

• Extension Storage

**ESS2016X**



**16 HDDs Network Storage**

- 256 Mbps throughput
- 4GB RAM
- 16 HDDs(each one up to 6TB), scale up to 384TB with 2 x ESS3124-J (by mMini SAS)
- Support RAID0/1/5/6/10/50/60/JBOD, hot-swappable
- iSCSI
- RJ-45 Gigabit Ethernet ports x 3 (one for management)

**ESS3116/24/48S(D)-J(R)**

**NEW**



**16/24/48 HDDs Storage Extension Cabinet**

- 16/24/48 HDDS (each one up to 6TB)
- Support RAID0/1/5/6/10/50/60/JBOD, hot-swappable
- Redundant fans and redundant power supply,
- Support expansion device cascade
- 2 SAS interfaces, 1 console port
- \*-R: Redundant Power supply

**ESS1504C/ESS1508C**

**NEW**



**4/8 HDDs eSATA Storage Cabinet**

- 512 Mbps throughput
- 1.5U standard 19-inch rack case
- eSATA port transmission speed up to 3Gbp/s
- Powerful R / W performance: read >70MB/s, write >40MB/s
- Max support Internal 4/8 SATA HDD up to 12/24TB
- Recommended with DVR, NVR connection

## Network Video Server

### Encoder

#### NVS0404/0804/1604HDC-A



##### 4/8/16CH 1080P Network Video Encoder

- 4/8/16ch video
- 4ch audio in & 1ch audio out, 1ch Mic in
- All channel@720P realtime / @1080P non-realtime recording
- 8/8/16ch alarm in & 3 relay out, RS485
- RJ45(100M/1000M/1000M)
- 2 SATA, 2 USB

#### NVS0404/0804/1604HF-A-E



##### 4/8/16CH H.264 Real-time Network Video Server

- 4/8/16ch video
- 4/8/16ch audio in & 1ch audio out, 1ch Mic in
- All channel@960H realtime recording
- 4/8/16ch alarm in & 3 relay out, RS485, RJ45(1000M)
- 2 SATA, 2 USB

#### NVS0104/0204/0404HE



##### 1/2/4CH H.264 Network Video Server

- 1/2/4ch video inputs
- 1/2/4ch audio in & 1ch audio out, 1ch Mic in
- All channel@960H realtime recording
- 4/2ch alarm in/out, RS485, RJ45(100M)
- Hot swappable SD card

### Decoder

#### NVS0904/1604DH



##### 9/16ch Network Video Decoder

- Support multiple devices: Network camera, DVR, NVS, NVR
- H.264/MPEG-4 dual codec video decoding
- Support multiple resolution decoding: QCIF/CIF/2CIF/HD1/D1/720P/1080P/3Mp/5Mp
- Up to 1080P display output & various interfaces: HDMI, VGA
- Support various split-window modes
- Support up to 3\*3 (NVS0904DH) and 4\*4 (NVS1604DH) video wall display

#### NVS0104DH-4K

**NEW**



##### Ultra HD Network Video Decoder

- Designed for standalone operator viewers
- H.265/H.264/MPEG-4 dual codec video decoding
- Support multiple resolution decoding: up to 8Mp and 12Mp network video
- HDMI/VGA output, HDMI support Ultra HD 4K output
- Support 1 / 4 / 9 / 16 / 25 / 36 / 64 display split
- Support audio, alarm, bi-directional talk, RS485
- Local GUI support mouse operation directly

#### NVS0404DH



##### 4CH Full HD Network Video Decoder

- Support IPC, DVR, NVS, CMS
- H.264/MPEG-4 dual codec
- 28ch@D1, 14ch@720P, 7ch@1080P decoding,
- 4 HDMI & 4 VGA & 4 TV display
- 16/8ch alarm in/out
- RJ45(1000M)

## Video - Wall

### Monitor

#### DHL27/DHL32/DHL46



##### Surveillance Monitor

- 27"/32"/46" 16:9 industrial 7×24 LCD panel
- LED backlight (DHL27/DHL32), CCFL backlight (DHL46)
- FHD resolution (DHL27/DHL46), 1366×768 resolution (DHL32)
- Input interfaces support CVBS×2, HDMI×1, DVI×1, VGA×1
- Output interface support CVBS×2

#### DHL22(-F600)



##### Full HD Monitor

- 21.5" (20.7" for -F600 model) diagonal size
- LED backlight
- 1920\*1080 full HD resolution
- HDMI/VGA input, audio input (for -F600 model)
- Built-in speaker (-F600 model)

### Display Unit

#### DHL460UT(S)-E/DHL550UT(S)-E



##### FHD LCD Display Unit

- 46"/55" industrial 7×24 LCD panel
- LED backlight
- 700cd/ m<sup>2</sup> (500cd/ m<sup>2</sup> for S model)
- 5.3mm physical seam, 3.5mm optional (55")
- CVBS×2/HDMI×1/DVI×1/VGA×1 input, CVBS×2 output

#### PHSA1.6-EH



##### Indoor Small Pixel LED Video Wall

- Pixel pitch of 1.667mm
- Cabinet size(W×H×D): 480mm×480mm×86mm
- Black face LED, 3-in-1 SMD1010
- 800 cd/m<sup>2</sup>, 36,0000 pixels/m<sup>2</sup>

#### PHSA1.9-EH



##### Indoor Small Pixel LED Video Wall

- Pixel pitch of 1.904mm
- Cabinet size(W×H×D): 480mm×480mm×86mm
- Black face LED, 3-in-1 SMD1010
- 800 cd/m<sup>2</sup>, 27,5625 pixels/m<sup>2</sup>

#### PHSA2.5-EH



##### Indoor Small Pixel LED Video Wall

- Pixel pitch of 1.904mm
- Cabinet size(W×H×D): 480mm×480mm×88.24mm
- Black face LED, 3-in-1 SMD1010
- 1000cd/m<sup>2</sup> (before calibration), 800cd/m<sup>2</sup> (after calibration)
- 160,000 pixels/m<sup>2</sup>

## • Image Controller

### M60-12U



#### Multi-service Matrix Platform

- 12U 19" ATCA industry box
- Hot-swappable service card
- 320ch@D1 or 160ch@1080P encoding (full configured)
- 1280ch@D1 or 320ch@1080P decoding (full configured)
- Maximum 80 output ports
- Signal Input: Analog/Digital, HD/SD mix input
- Support roam, overlay, zoom and etc.

## • Matrix

### M70-4U



#### Multi-service Matrix Platform

- 4U 19" ATCA industry box
- Hot-swappable service card
- 320ch@D1 or 80ch@1080P encoding (full configured)
- 640ch@D1 or 160ch@1080P decoding (full configured)
- Maximum 40 output ports
- Signal Input: Analog/Digital, HD/SD mix input
- Support roam, overlay, zoom and etc.

### M30-3U



#### Image Controller

- OS-free, virus-free, high stability
- 9CH HD output, 16CH CVBS input, max 8CH VGA input
- Support max 13CH@1080P decoding capability
- Easy video-wall configuration, support roam, split, overlay, zoom and etc.
- Integrated with Smart PSS, DSS7016

## Software

### • CMS

#### DSS7016/DSS4004



#### Digital Surveillance System

- DSS7016: Max support 2000-ch input / 500-device input; DSS4004: Max support 500-ch input / 200-device input
- DSS7016: 700Mbps for local storage & 700Mbps for transfer capability; DSS4004: 100Mbps for local storage & 300Mbps for transfer capability
- Up to 10000 account management & 1000 online users for DSS7016; Up to 5000 account management & 500 online users for DSS4004
- Support Google and Raster Map
- Support IPC, DVR, NVR, NVS, IPC, NVD and etc.

#### Smart PSS



#### Pro Surveillance System

- Max 256 devices connection
- Max 64 (8x8) video live preview
- Support customized splitting
- Support DVR, SVR, NVR, NVS, IPC, NVD and etc.
- Support Multi-screen
- Used for central monitoring system



#### DMSS



#### Mobile Phone Surveillance Software

- For iOS: iPhone (iDMSS Plus) & iPad (iDMSS HD)
- For Android: Phone & Kindle Fire (gDMSS Plus), Tablet (gDMSS HD)
- For Windows Phone8 (wDMSS Plus)
- For Windows Phone 7 or below (DMSS)
- Main/Extra stream Preview & Playback, DDNS sync (Cloud Device)
- Multi-language, Push Notification, Remote Configuration, HDD report, E-map
- Local Recording, Alarm out, Favorites Group, Color Setting, QR Code Scanning

## Keyboard

### • Keyboard

#### NKB-3000



#### HD Network Keyboard

- For DVR, NVS, PTZ Dome Camera control
- RS232, RS485 & Network Connections
- 4D-joystick Control & PTZ Functions
- Support 1080p realtime preview
- Support HDMI/VGA/TV(BNC) sync video output
- Touch screen, external Wi-Fi

#### NKB1000



#### Network Keyboard

- For DVR, NVS, PTZ Dome Camera
- RS232, RS485 & Network Connections
- Joystick Control & PTZ Functions
- Connect to smart PSS via USB

#### KBD1000/KB1000



#### Control Keyboard

- For DVR, NVS, PTZ Dome Camera
- RS232, RS485
- Joystick Control & PTZ Functions

## Accessories

### • Len

#### 4K Lens



- 1/1.7" 3.7-16mm F1.5 12MP CS mount
- 1/1.7" 10.5-42mm F1.5 12MP CS mount

#### Starlight lens



- 1/1.8" 4-18mm F1.6 3MP C mount
- 1/1.8" 12-50mm F1.4 8MP CS mount

#### Megapixel lens



- 1/2.7" 2.7-12mm F1.6 3MP CS mount
- 1/2.7" 5-50mm F1.6 3MP CS mount

Accessories

• POE

PFS3106-4P-60/3110-8P-96



- 4/8-port POE Switch**
- IEEE802.3af, IEEE802.3at standards
  - Total output power 60/96w

PFT1200



- High POE Midspan**
- Output power 60w
  - Could cascade two POE Passive Extenders to cover the range of 300m

PFT1300



- POE Passive Extender**
- POE-in port, POE-out port, POE-for IPC port
  - Support rail mount, wall mount, junction box mount

• Switch

PFS3102-1T/3106-4T/3110-8T



- 1/4/8-Port Ethernet Switch**
- 1×100/1000Mbps SFP fiber port
  - 1/4/8×10/100/1000Mbps RJ45 ports

• Wireless

PFM880/881



- 5.8G Wireless video transmission device**
- Wireless coverage recommended range ≤ 3km, max 5km
  - Support point to point and multi-points to point modes

• Aggregation

PFS5424-24T



- 24-Port Multilayer Switch**
- 24×10/100/1000Mbps RJ45 ports
  - 4×1000Mbps Combo ports

• Optical Transceiver

PF02910

HDCVI



- 16ch HDCVI Optical Transceiver**
- Single-mode fiber, Default transmission distance 20km
  - HD real time transmission
  - Support video format as 25/30/50/60fps@720P & 25/30fps@1080P

• Balun

PFM809

HDCVI



- 16ch Passive HDCVI balun**
- Coaxial to twisted-pair transmission
  - 720P max transmission distance 400m, 1080P max transmission distance 250m
  - Support audio and RS485

PFM800

HDCVI



- Passive HDCVI balun**
- Coaxial to twisted-pair transmission
  - 720P max transmission distance 400m, 1080P max transmission distance 250m
  - Support audio and RS485

• Distributor

PFT2690

HDCVI



- HDCVI Video Distributor**
- Support 16/32 channel In/Out
  - Apply to all coaxial signal

• Converter

TP2105

HDCVI



- HDCVI Video Converter**
- Input HDCVI signal, Self-adaptive output HDCVI, HDMI, VGA, CVBS signal

PFT2100

HDCVI



- HDMI-HDCVI Converter**
- Input HDMI video signal, self-adaptive output HDCVI signal
  - HDMI support mode: 1024×768@60Hz, 1280×720@50/60Hz, 1280×1024@60Hz, 1600×1200@60Hz, 1920×1080@50/60Hz

## • Power adapter

### PFM321/322

**HDCVI**



#### DC Power

- 12V 1A/4×12V 0.7A
- PFM322 for HDCVI Centralized power supply
- Work temperature: -30~70 °C

## • Tool

### PFM900

**HDCVI**



#### Integrated Mount Tester

- For IPC, HDCVI, Analog camera test
- Support audio and RS485 control
- POE/ DC12V longer power supply
- TDR cable detection

## • Housing

### PFH610N/610N-H/610N-IR/ 610N-W/610N-IR-W, PFB604W



- Aluminum +PC/ Aluminum
- For box camera and zoom camera
- IP66
- Heater, cooler, IR 50/100m, wiper and IK10 optional
- Wall mount bracket of hidden line

## • Junction box

### PFA130/131/132



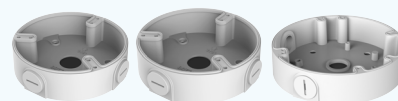
- Aluminum +SECC
- For bullet camera and dome camera
- Indoor

### PFA134/135



- Aluminum
- For bullet camera
- Indoor and outdoor

### PFA136/137/138/139



- Aluminum
- For dome camera
- Indoor and outdoor

### PFA121/122/123



- Aluminum
- For bullet camera/dome camera
- IP66

## • Power box

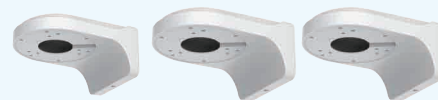
### PFA140/141



- Aluminum +SECC
- For installation of power supply, lightning protection module, optical transceiver etc.
- IP66

## • Wall mount bracket

### PFB200W/203W/204W



- Aluminum +ABS/Aluminum
- For dome camera
- Indoor/outdoor

### PFB300S/302S, PFB303W



- Aluminum
- For dome/PTZ dome camera by mount adapter

## • Ceiling mount bracket

### PFB300C, PFA112/PFA113



- Aluminum +PC/ Aluminum
- For dome/PTZ dome camera by mount adapter
- PFA112/113 used to add length of ceiling mount

## • Other mount bracket

### PFA150/151



- SECC
- Pole mount / corner mount
- For bracket and box

# DAHUA TECHNOLOGY...

## ...MAKE YOUR LIFE SAFER

\* Design and specifications are subject to change without notice.

Lineup-02, May 2015



**DAHUA TECHNOLOGY CO., LTD.**

No.1199 Bin'an Road, Binjiang District, Hangzhou, China. 310053

Tel: +86-571-87688883 Fax: +86-571-87688815

Email: [overseas@dahuatech.com](mailto:overseas@dahuatech.com)

[www.dahuasecurity.com](http://www.dahuasecurity.com)



© Dahua Technology, All rights reserved