

# How to reset Dahua V-Radio Wireless Bridge using Reset Tool

## Suitable for:

DH-PFWB2-60n  
DH-PFWB2-30n  
DH-PFWB2-90n  
DH-PFWB5-30n  
DH-PFWB5-10n  
DH-PFWB5-90n  
DH-PFWB5-30ac  
DH-PFWB5-10ac  
DH-PFWB5-90ac

## User Guide

### 1) Hardware Connection

Connect the wireless bridge and one computer as below.

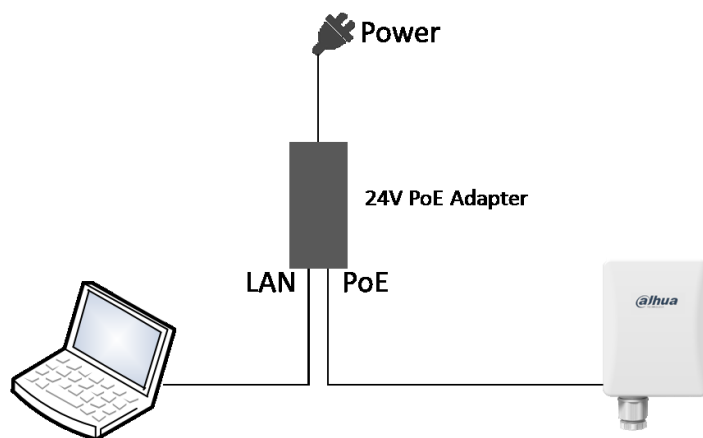


Figure 1-1 Hardware connection

### 2) JRE Installation

JRE must be installed in the computer to use Reset Tool. You can find “jre-8u171-windows-i586.exe” in the zip file.

### 3) Open Reset Tool

Open Reset Tool in the computer, Status will shows “Ready” as below.

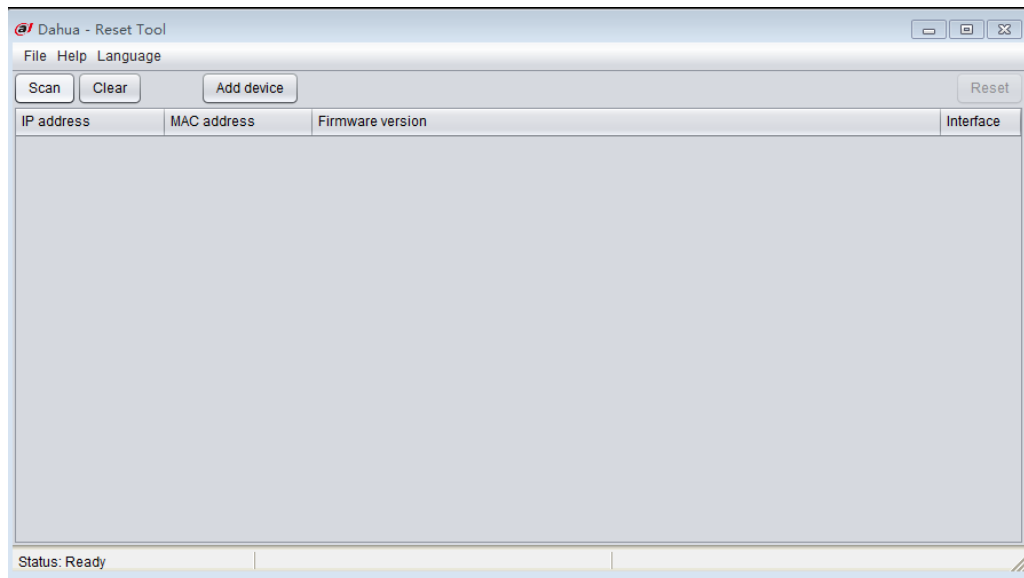


Figure 3-1

#### 4) Reboot Wireless Bridge

Keep Reset Tool open in the computer and reboot the wireless bridge (power off/on). The Reset Tool will scan wireless bridge automatically.

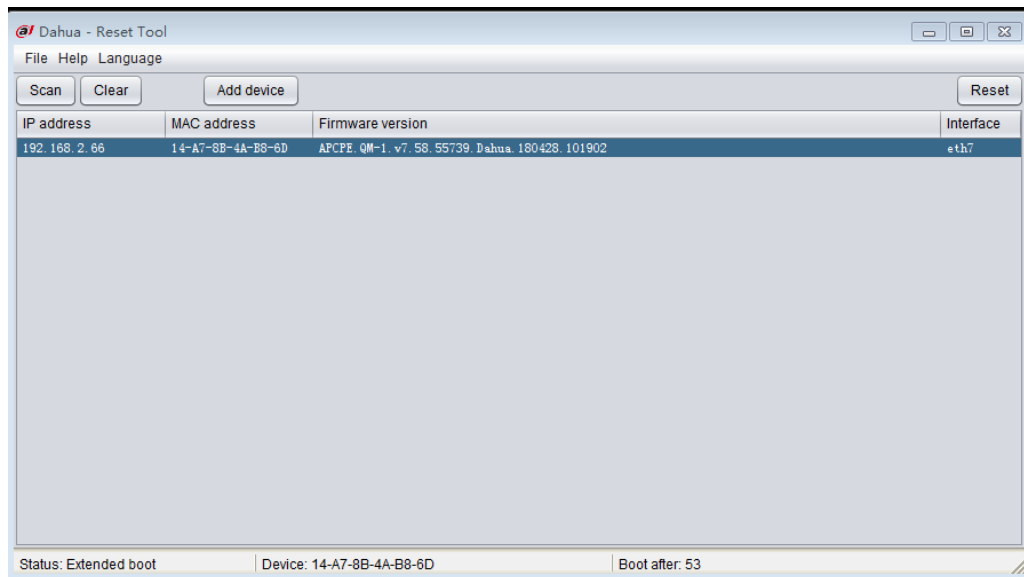


Figure 4-1

#### 5) Enter S/N to reset Wireless Bridge

Click "Reset" Button and enter last 4 numbers of S/N (serial number). Click "Enter" to reset the device.

Note: You must finish all the operations within 60s or you have to start from Step 4 again.

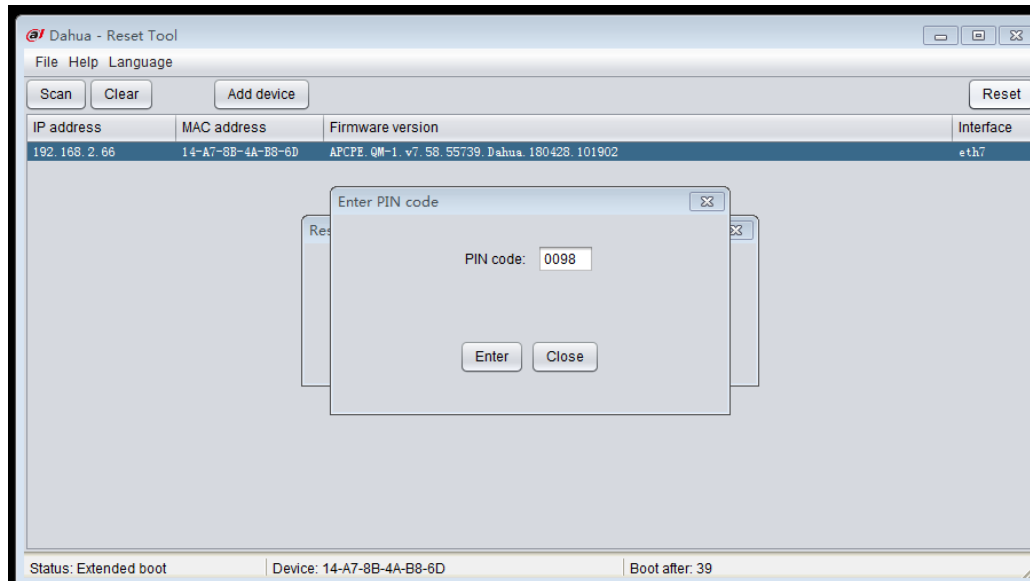


Figure 5-1

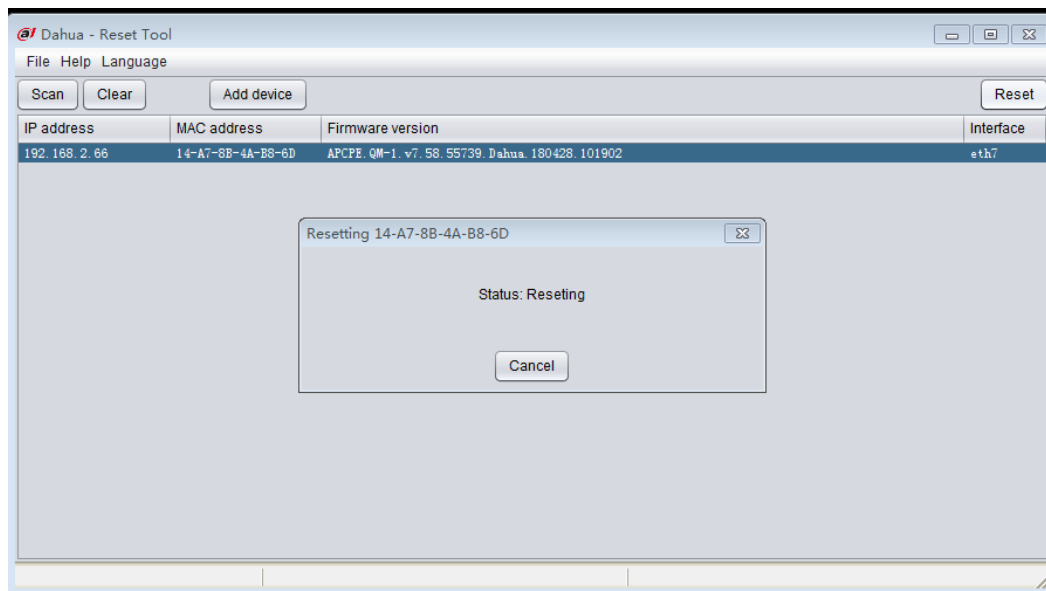


Figure 5-2

## 6) Reset Successfully

After operations above, the wireless bridge will be reset to factory default settings.

Default IP: 192.168.1.36

User Name: admin

Password: admin

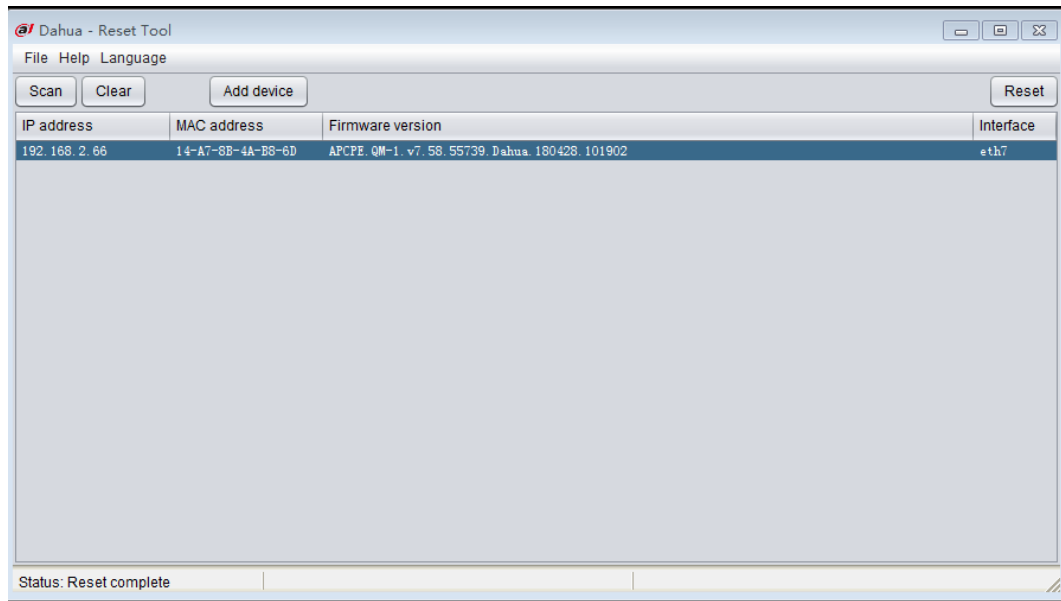


Figure 6-1