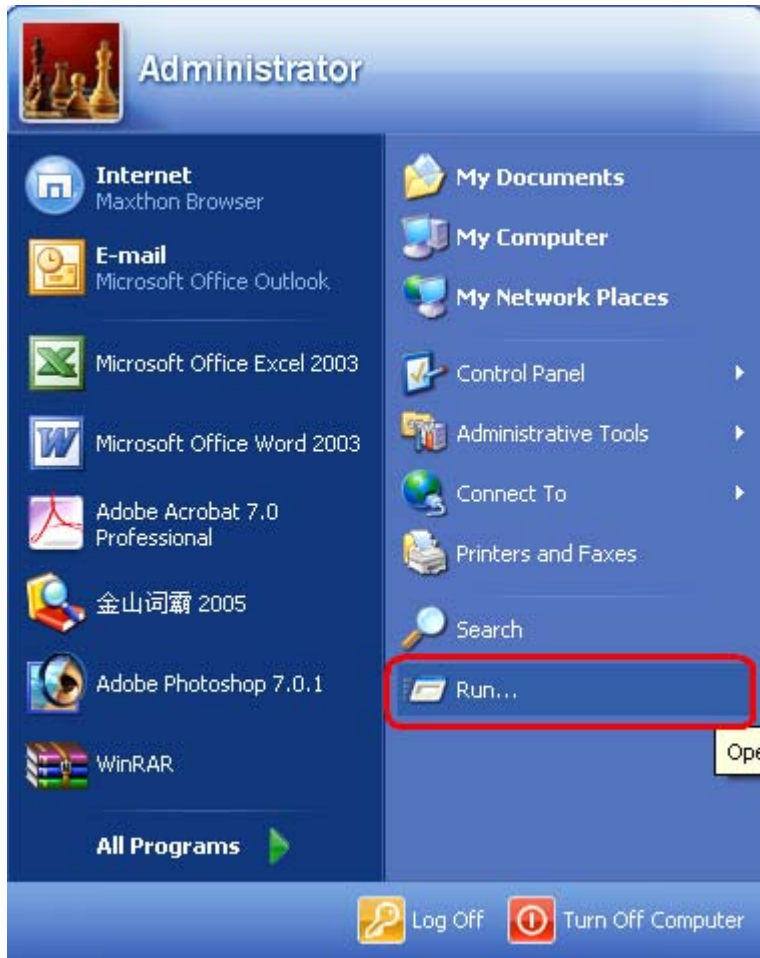


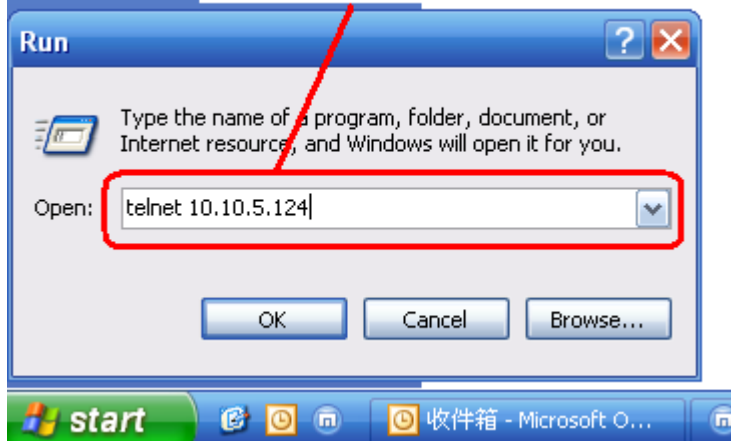
Clear the config of the NVS

Sometimes customer may need to clear the config of the NVS (e.g.:when you forget the password, you can set the username and password to default)

A、telnet the NVS



Telnet the NVS



B、 Input

User name: **root**

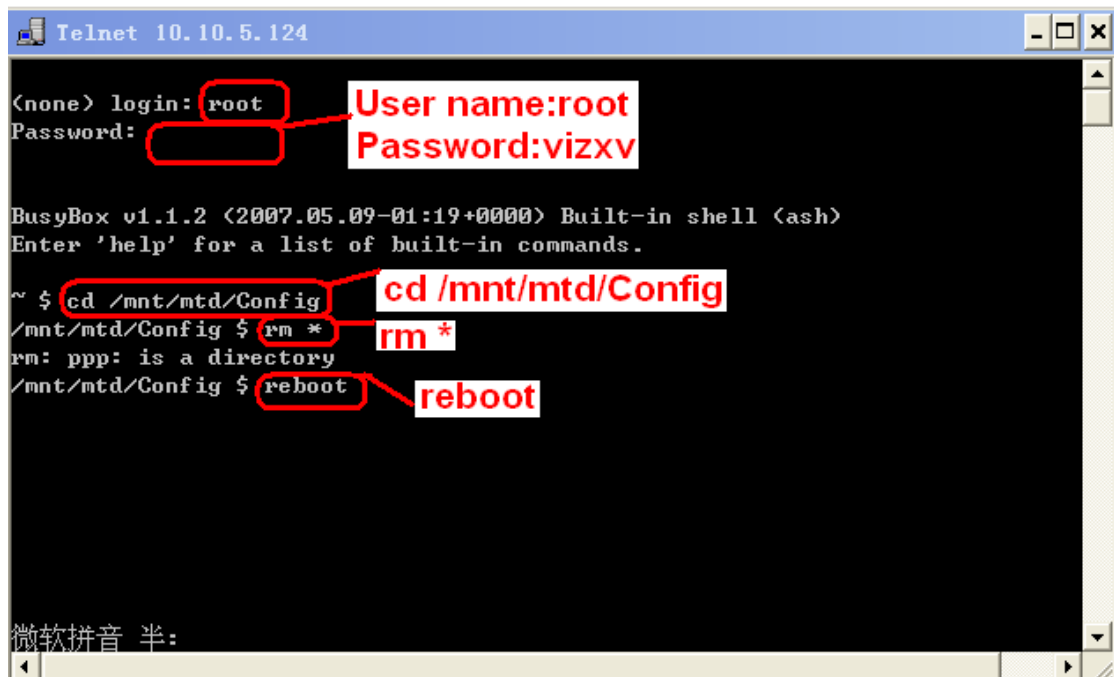
Password: **vizxv** or (without any password)

C、 Then you will get `~$` directory,

Input **cd /mnt/mtd/Config** to enter the **Config** directory

Input **rm *** to clear the old config

Input **reboot** to restart the DVR



```
Telnet 10.10.5.124
<none> login: root
Password:
BusyBox v1.1.2 (2007.05.09-01:19+0000) Built-in shell (ash)
Enter 'help' for a list of built-in commands.
~ $ cd /mnt/mtd/Config
/mnt/mtd/Config $ rm *
rm: ppp: is a directory
/mnt/mtd/Config $ reboot
```

The screenshot shows a Telnet window titled "Telnet 10.10.5.124". The terminal output is as follows:
1. Prompt: <none> login: **root** (highlighted with a red box). A callout box points to this input with the text "User name:root".
2. Prompt: Password: **vizxv** (highlighted with a red box). A callout box points to this input with the text "Password:vizxv".
3. System output: BusyBox v1.1.2 (2007.05.09-01:19+0000) Built-in shell (ash) Enter 'help' for a list of built-in commands.
4. Prompt: ~ \$ **cd /mnt/mtd/Config** (highlighted with a red box). A callout box points to this command with the text "cd /mnt/mtd/Config".
5. Prompt: /mnt/mtd/Config \$ **rm *** (highlighted with a red box). A callout box points to this command with the text "rm *".
6. System output: rm: ppp: is a directory
7. Prompt: /mnt/mtd/Config \$ **reboot** (highlighted with a red box). A callout box points to this command with the text "reboot".
At the bottom of the window, there is a prompt in Chinese: 微软拼音 半:

D、 The NVS user name and password will become to default value: **admin**