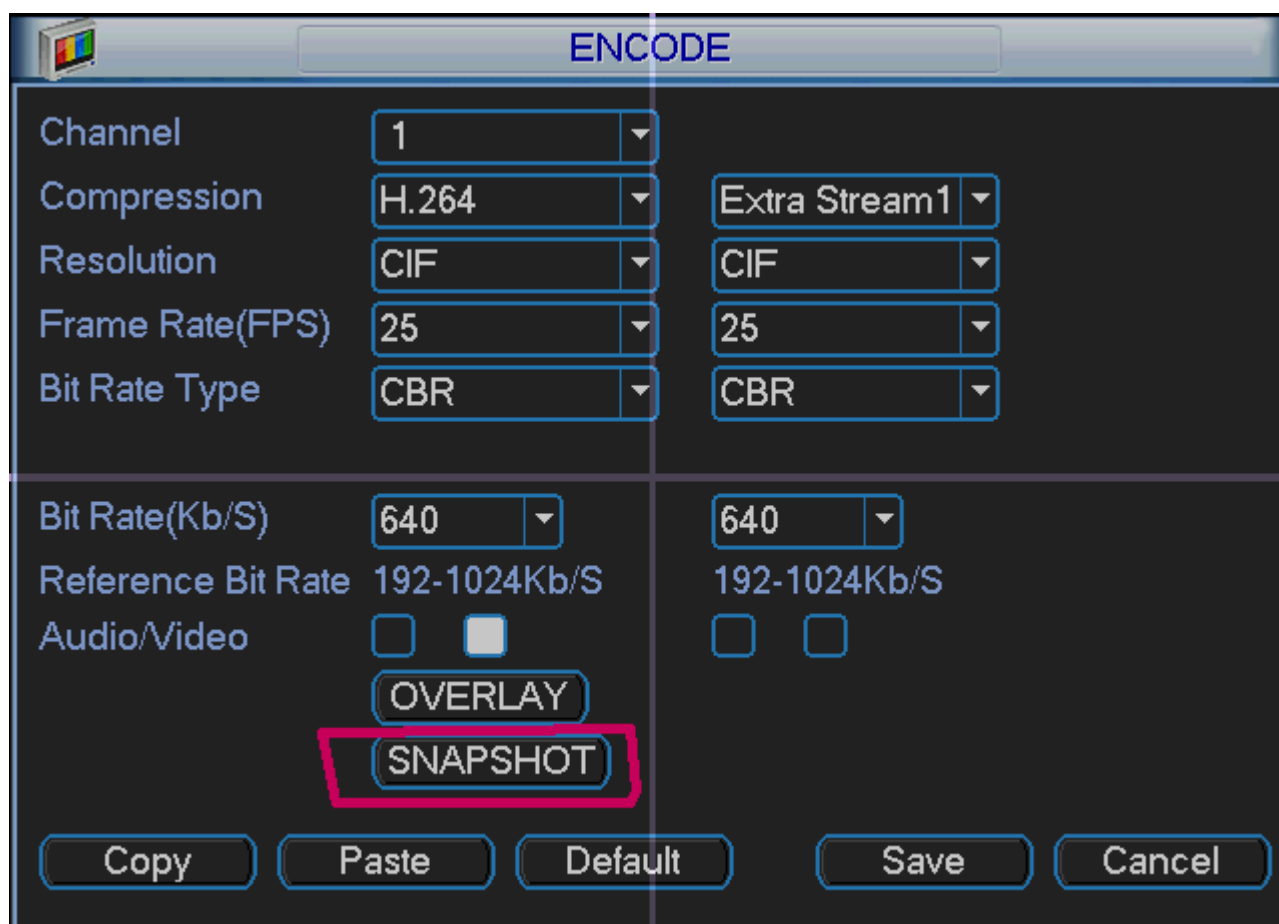
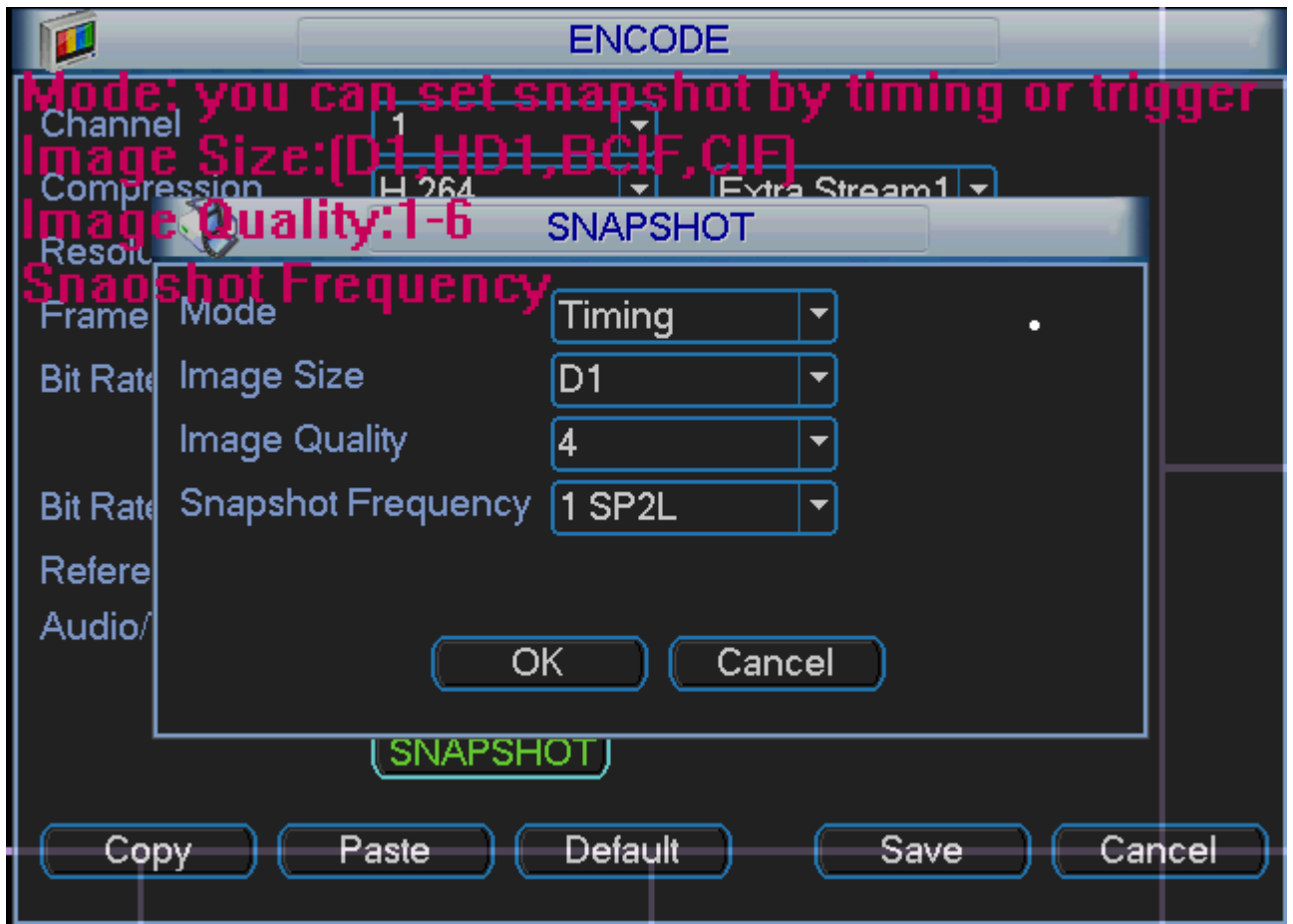

Snapshot Setting Instruction

1. Set Snapshot Function

Get into MAIN MENU>>SETTING>>ENCODE and click button “snapshot”



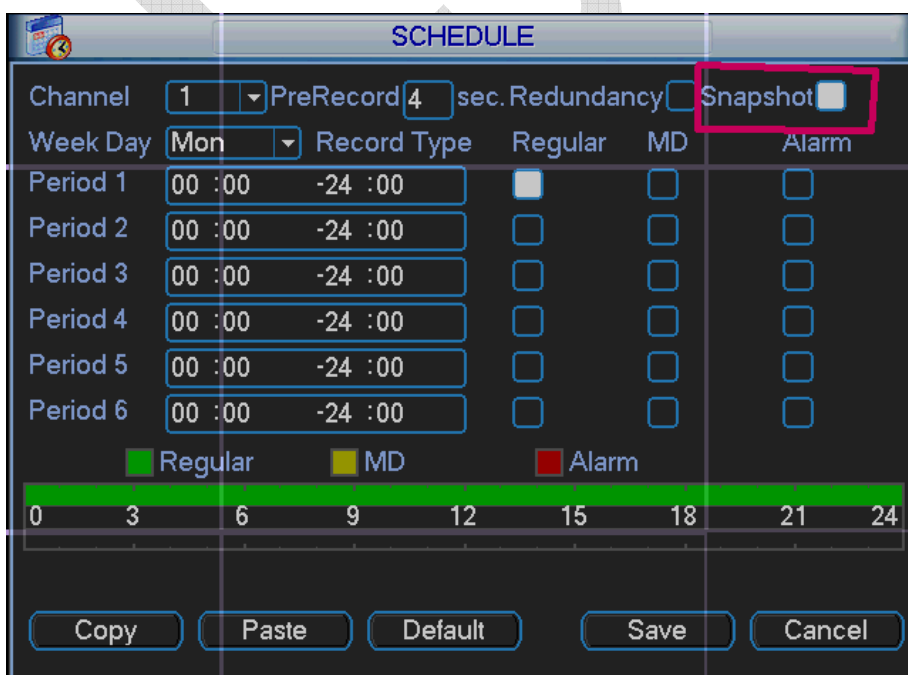
You will see the menu :



And set the mode ,image side, image quality and snapshot frequency as you want,

2. Timing

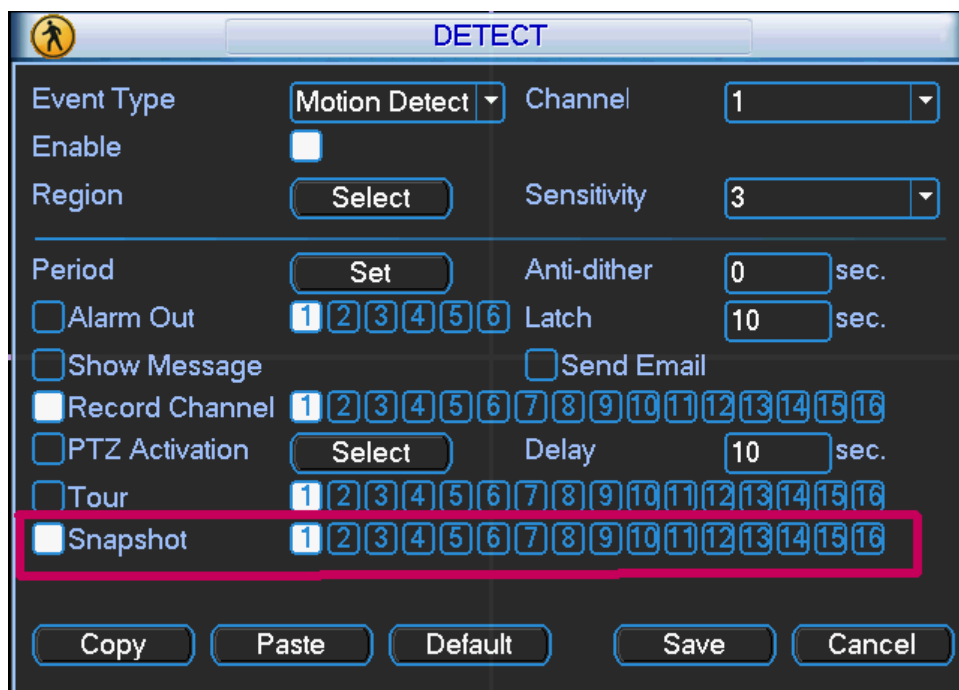
If you set the mode timing,. System will snapshot by the time. So first you should set the schedule of snapshot. Get into MAIN MENU>>SETTING>>SCHEDULE



3. Trigger

If you set the mode “trigger”, you should set when to trigger the snapshot, the motion detect happen or the alarm comes.

DETECT

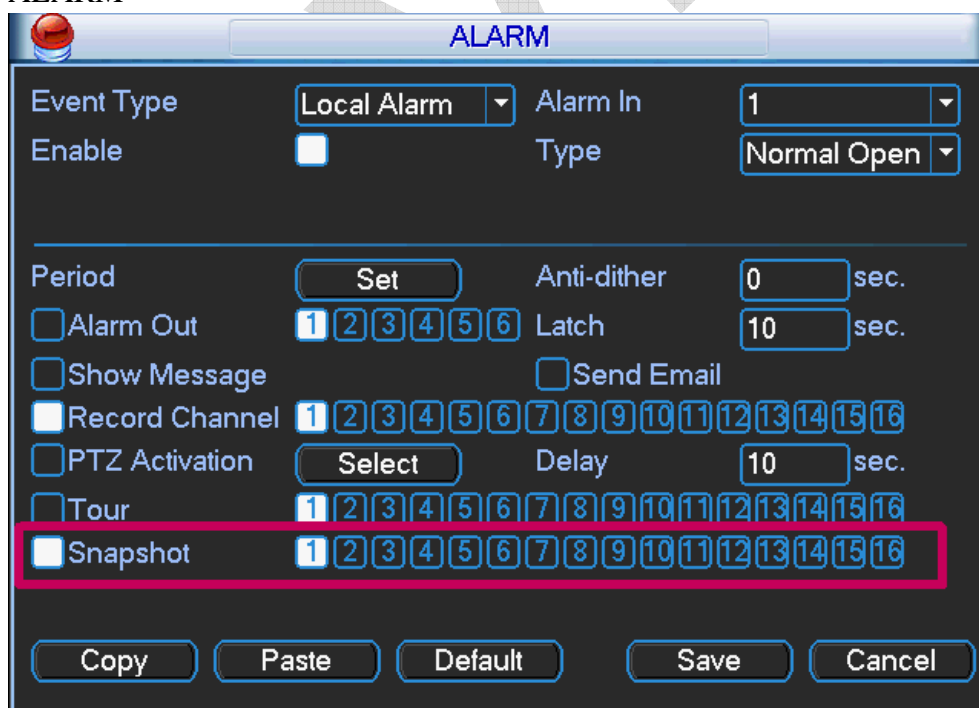


The DETECT configuration window includes the following settings:

- Event Type: Motion Detect
- Channel: 1
- Enable:
- Region: Select
- Sensitivity: 3
- Period: Set
- Anti-dither: 0 sec.
- Alarm Out: 1 2 3 4 5 6
- Latch: 10 sec.
- Show Message:
- Send Email:
- Record Channel: 1 2 3 4 5 6 7 8 9 10 11 12 13 14 15 16
- PTZ Activation: Select
- Delay: 10 sec.
- Tour: 1 2 3 4 5 6 7 8 9 10 11 12 13 14 15 16
- Snapshot: 1 2 3 4 5 6 7 8 9 10 11 12 13 14 15 16

Buttons: Copy, Paste, Default, Save, Cancel

ALARM



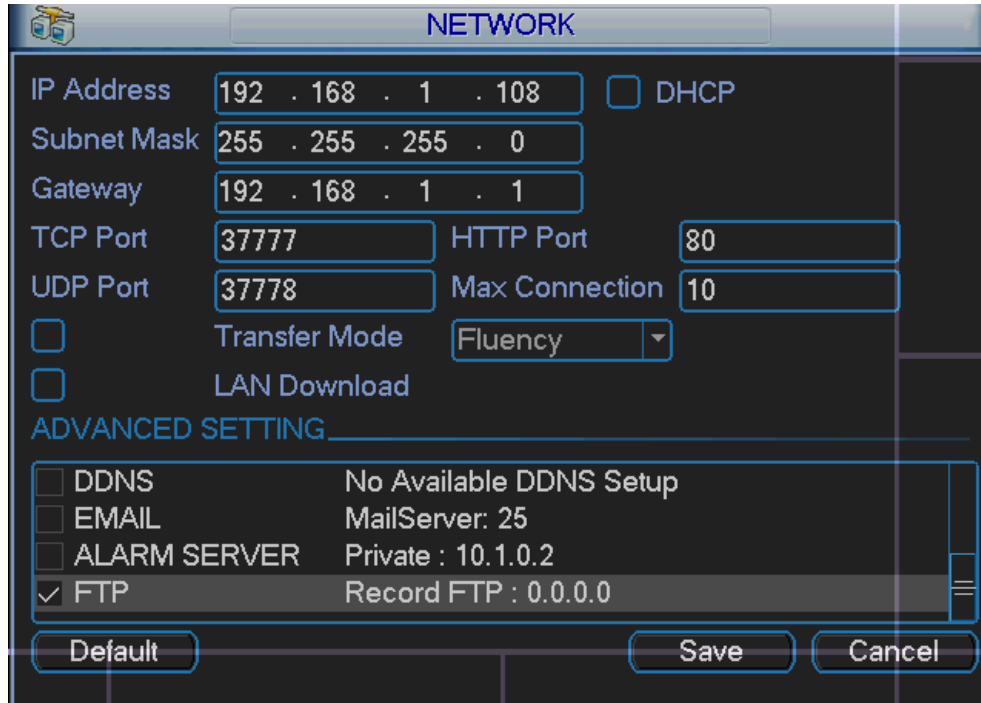
The ALARM configuration window includes the following settings:

- Event Type: Local Alarm
- Alarm In: 1
- Enable:
- Type: Normal Open
- Period: Set
- Anti-dither: 0 sec.
- Alarm Out: 1 2 3 4 5 6
- Latch: 10 sec.
- Show Message:
- Send Email:
- Record Channel: 1 2 3 4 5 6 7 8 9 10 11 12 13 14 15 16
- PTZ Activation: Select
- Delay: 10 sec.
- Tour: 1 2 3 4 5 6 7 8 9 10 11 12 13 14 15 16
- Snapshot: 1 2 3 4 5 6 7 8 9 10 11 12 13 14 15 16

Buttons: Copy, Paste, Default, Save, Cancel

4. Do The FTP Setting With Nothing Special .

After that , you can set the FTP function to sent the snapshot to the FTP server where you want to storage the snapshot,(example: my serverIP:10.10.2.136,User name:1.Password:1)



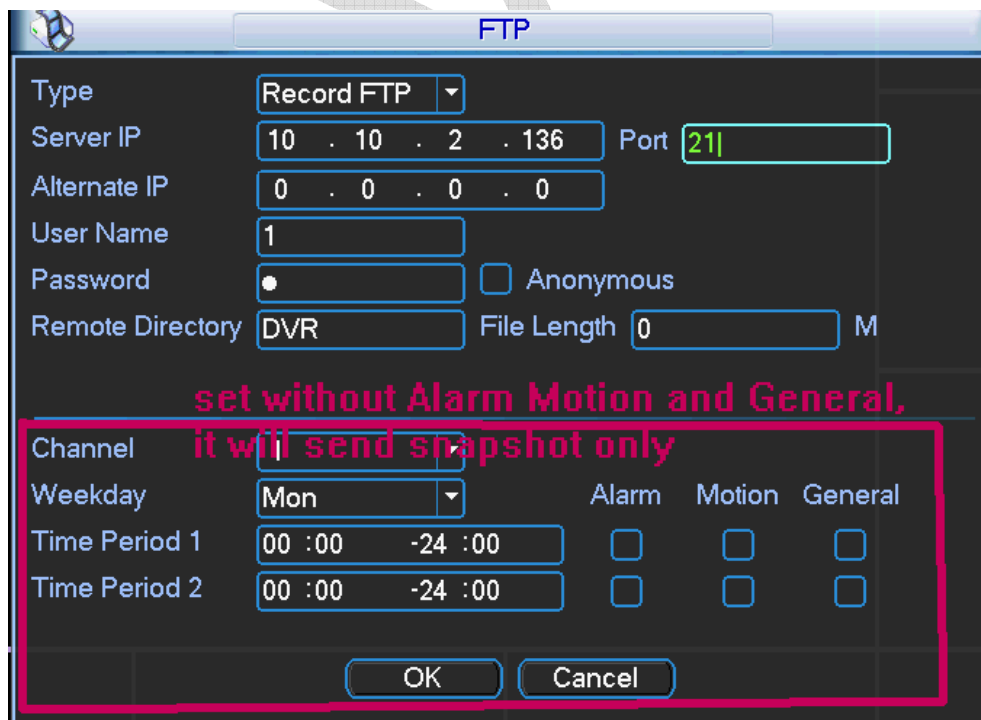
NETWORK

IP Address: 192 . 168 . 1 . 108 DHCP
Subnet Mask: 255 . 255 . 255 . 0
Gateway: 192 . 168 . 1 . 1
TCP Port: 37777 HTTP Port: 80
UDP Port: 37778 Max Connection: 10
 Transfer Mode: Fluency
 LAN Download

ADVANCED SETTING

<input type="checkbox"/> DDNS	No Available DDNS Setup
<input type="checkbox"/> EMAIL	MailServer: 25
<input type="checkbox"/> ALARM SERVER	Private : 10.1.0.2
<input checked="" type="checkbox"/> FTP	Record FTP : 0.0.0.0

Default Save Cancel



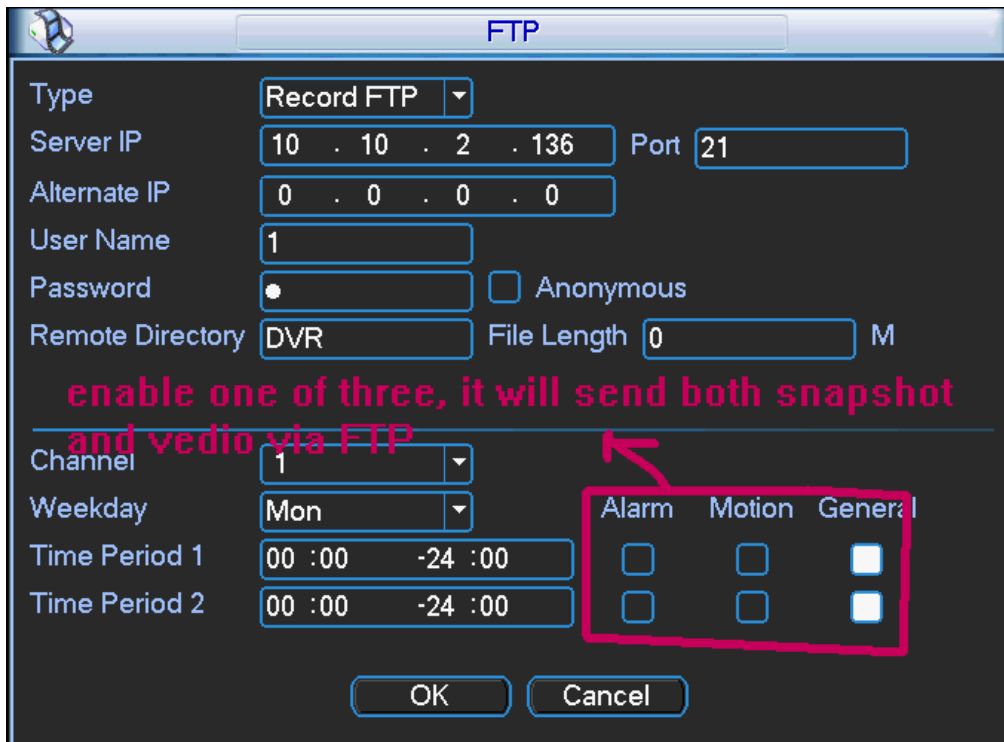
FTP

Type: Record FTP
Server IP: 10 . 10 . 2 . 136 Port: 21
Alternate IP: 0 . 0 . 0 . 0
User Name: 1
Password: 1 Anonymous
Remote Directory: DVR File Length: 0 M

**set without Alarm Motion and General,
it will send snapshot only**

Channel	Weekday	Alarm	Motion	General
Time Period 1	00 :00 -24 :00	<input type="checkbox"/>	<input type="checkbox"/>	<input type="checkbox"/>
Time Period 2	00 :00 -24 :00	<input type="checkbox"/>	<input type="checkbox"/>	<input type="checkbox"/>

OK Cancel



5. Check The Snapshot You Send Via FTP

