



How to configure the motion settings for the QC Analog HD DVR/NVR

Now that you've set up the recording schedule, you can use the Event window to direct the actions that the NVR will take when motion, tampering or loss of video is detected.

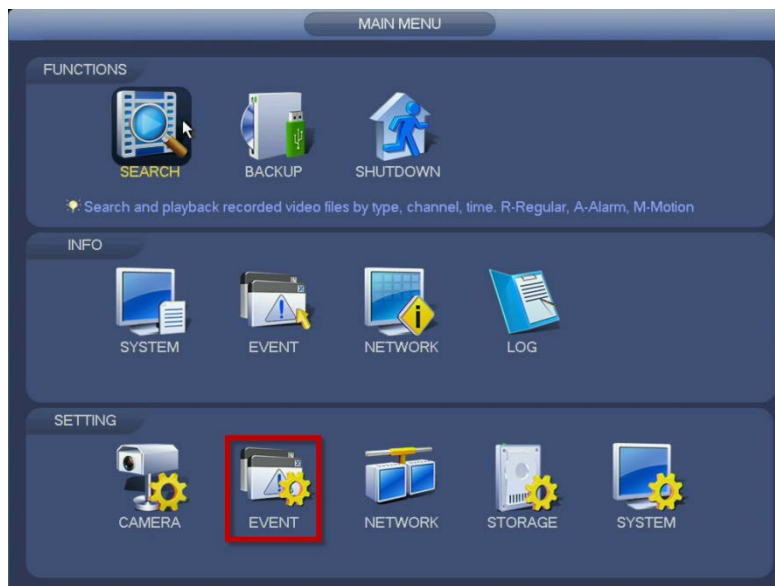
Motion Events

This tab is divided into two parts. The upper portion is for fine-tuning the motion sensitivity of each camera while the lower segment controls how the NVR will respond when it detects motion on that channel.

Step 1: Click on Main Menu.



Step 2: In the SETTING section, click on EVENT.





How to configure the motion settings for the QC Analog HD DVR/NVR

Step 3: Now make sure you have selected DETECTIONS and on the tab Motion Events.



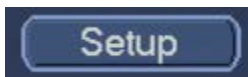
Motion Events

This tab is divided into two parts. The upper portion is for fine-tuning the motion sensitivity of each camera while the lower segment controls how the NVR will respond when it detects motion on that channel.

Definitions:

- **Channel** - Each channel can be individually configured.
- **Enable** - This turns motion detection on or off.
- **Region** - You can turn off motion detection in certain areas of the video - such as the area covering a busy street or a hallway at the base of a restricted staircase.

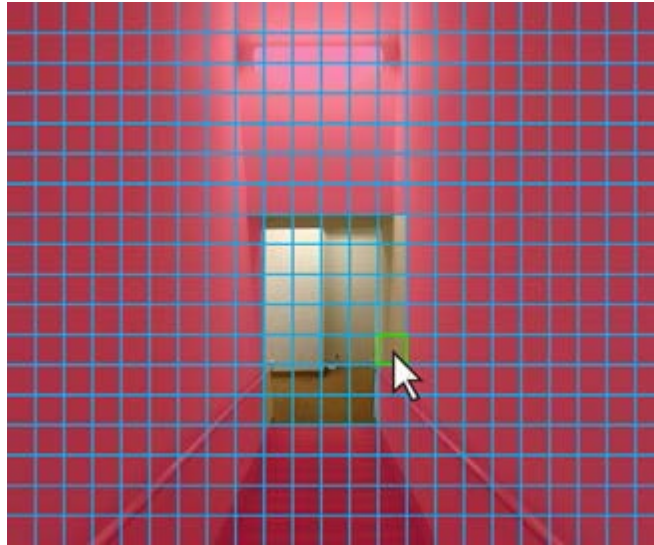
Step 4: To setup the Motion Detection Regions, you will need to click on the Region Setup button.





How to configure the motion settings for the QC Analog HD DVR/NVR

Step 5: The camera's view will appear on screen with a grid overlay. Areas that are sensitive to motion detection will have a red hue.



Step 6: Click or click-and-drag on an area to make it clear (This will deactivate the motion detection sensitive area).

Please Note: Highlighting the area again will make the detection active again.

Step 7: When you are done, right click the mouse to exit the screen.

Step 8: To set the sensitivity, click on the arrow and select the number. *Please Note: The sensitivity of this camera can be adjusted from 1-8 with "8" being "Most Sensitive."*





How to configure the motion settings for the QC Analog HD DVR/NVR

Step 9: Below is the detailed information on what to set up for the motion triggering:

Trigger Period Hold Time Second

Alarm Out Alarm Continue Second

Show Message Alarm Upload Send Email

Record Channel

PTZ Activation Rec. Continue Second

Tour

Snapshot

Buzzer

Trigger Period - Just as you've configured the NVR to record on a schedule, you can set the alert notifications to occur only at certain times.

EXAMPLE: Turning off motion alerts during business hours when employees are in the building.

Hold Time - This is the time, in seconds, that the NVR will wait after detecting motion before saving the file. If it detects motion during that time, it will treat it as part of the same event. The maximum delay is 10 minutes.

Alarm Out - If your NVR is equipped with an alarm block, you can have it trigger up to three audible alarms.

Alarm Continue - The alarms can be set to continue to sound for up to 5 minutes.

Show Message - An on-screen message can be displayed

Alarm Upload - Your NVR can upload an alert message to a computer monitoring your system using the Web Service or the Smart PSS software. See Section 3.2 and 3.3 of the Remote Monitoring Guide.

Send Email - When enabled, an alert email will be sent to the address you've entered in the Network Setting window (again, see Section 4.3)

Record Channel - You can also have other cameras start recording when one detects motion.

PTZ Activation - An attached PTZ camera can be directed to a Preset Point (see Section 2.7).

Recording Continue - The camera - and cameras that were triggered - will continue to record for up to five minutes afterwards.

Tour - This is not the PTZ tour. When enabled, this will cause the NVR to cycle through the full-screen views from the selected cameras.

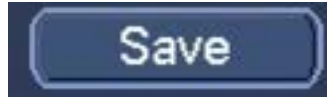
Snapshot - In addition to recording video, other cameras can be set to take snapshots (set up in Section 4.1).

Buzzer - The NVR's internal buzzer will sound for the same duration as the external alarms.



How to configure the motion settings for the QC Analog HD DVR/NVR

Step 10: Once you have completed the settings of one of your cameras you can click on save and proceed to the next camera.



Step 11: After you have completed and saved the settings for all cameras, you are able to click Apply.

