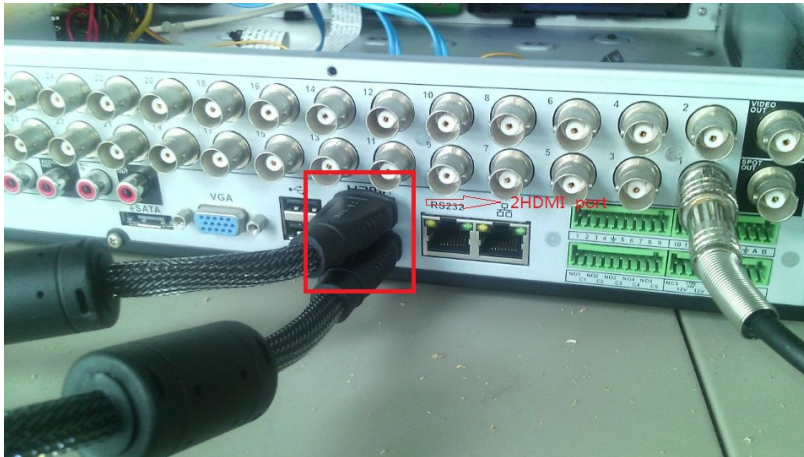


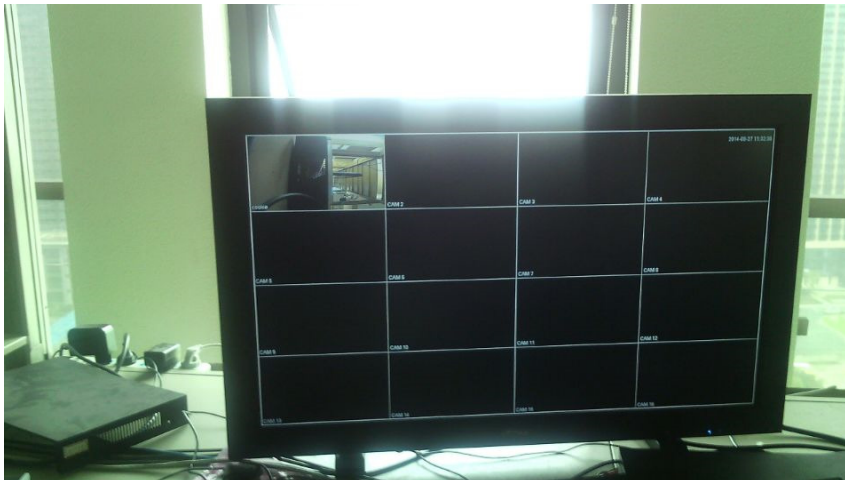
## 2HDMI Function Introduce

### Part.1 (DVR7432)

The 2 HDMI port.



The default interface of HDMI2



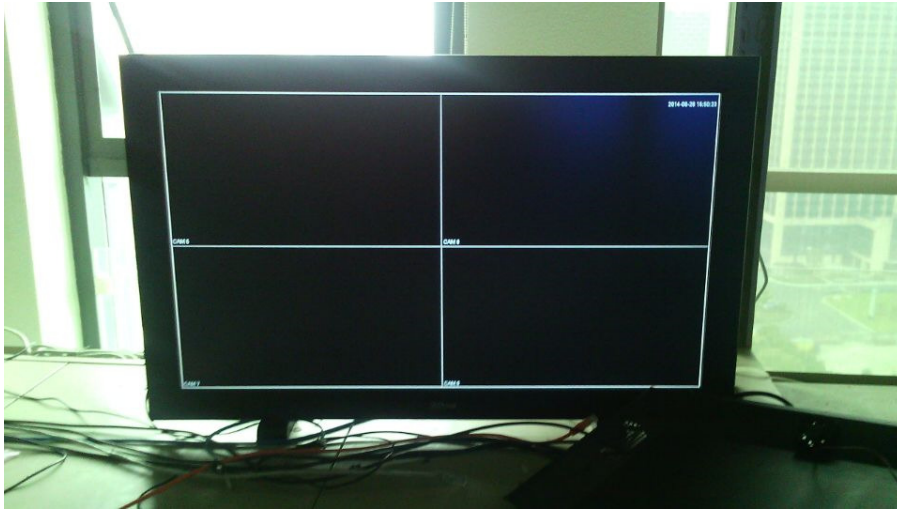
Compare with the HDMI1



Choose the MAIN MENU→SETTING→SYSTEM→VIDEO MATRIX, set the split ,we can choose View 1/4/9/16



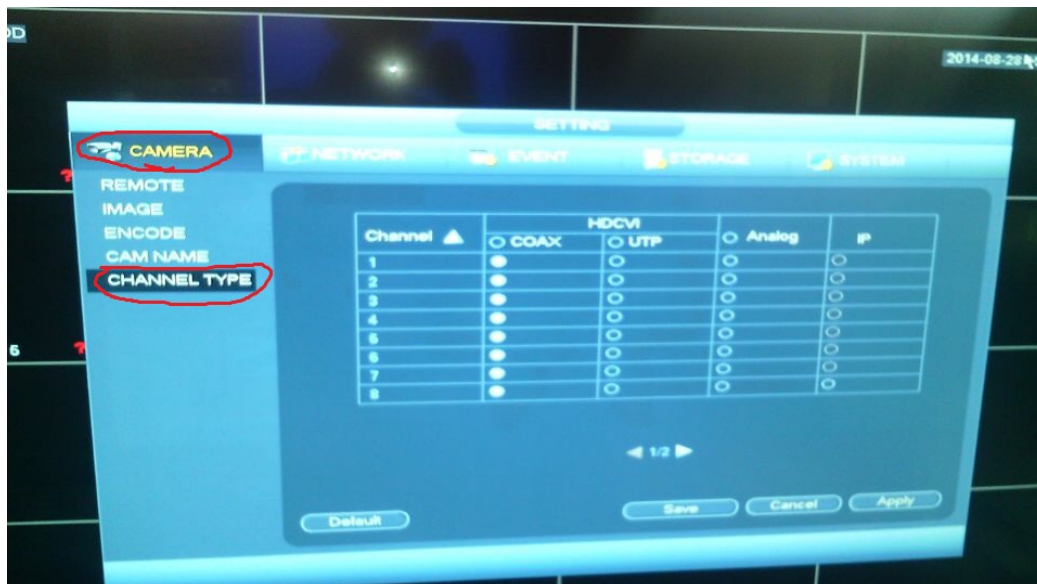
For example, View 4



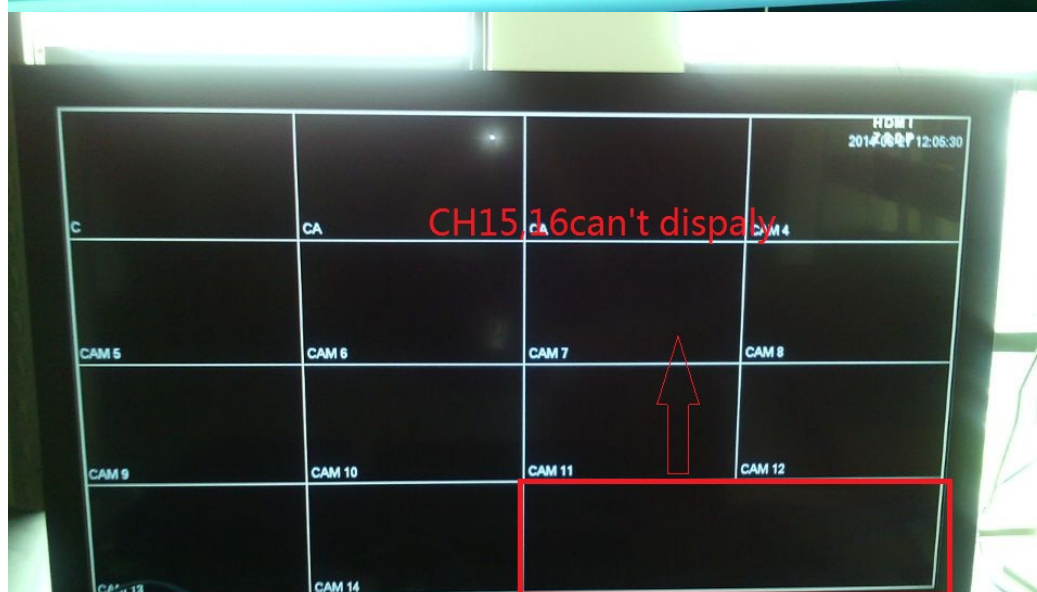
## Part.2 (HCVR7816S)

HCVR7816S can support analog/HAC/IP camera, but HDMI2 don't support IPC.

Choose the SETTING→CAMERA→CHANNEL TYPE



For example, choose CH 15,16 for IP, we can see the following case.



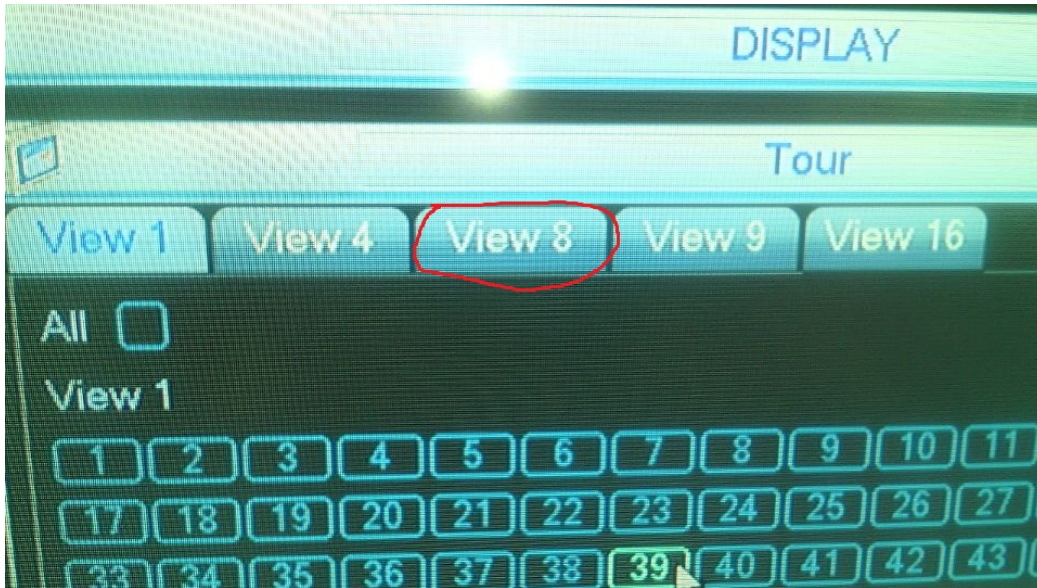
When we choose 10-16CH for IP, we can only choose View1/4/9 in VIDEO MATRIX



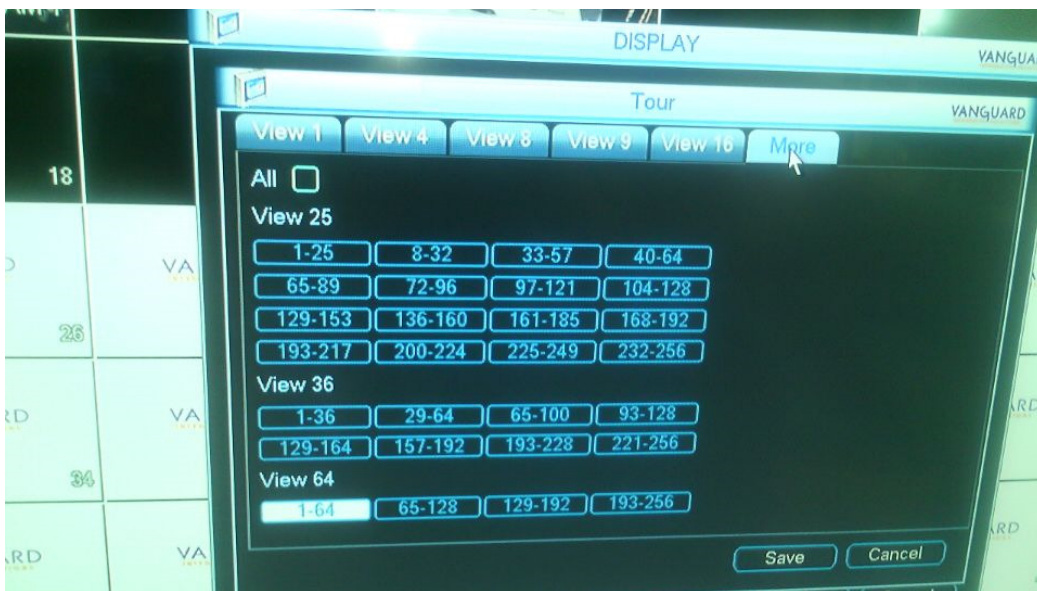


### Part.3 (NVR6000)

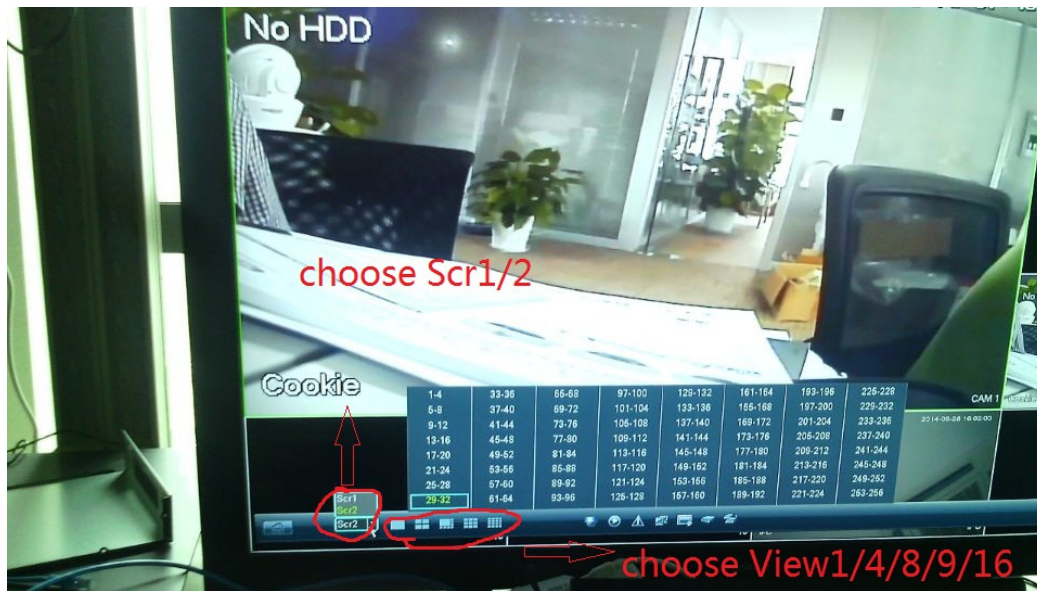
Click the SETTING→DISPLAY→Tour, we can choose View1/4/8/9/16



Compare to the HDMI1



We can also control HDMI2 by the green menu below the screen



Details:

1. All the devices above support tour in HDMI2
2. Old program only support view4
3. The newer version will come out that don't support Netra card,so that if customer use it and update the new firmware, Netra card won't be used.