

AmrDll.dll
1.0.2.3
AmrDll

AutoSearchDev.dll

config.ini
配置设置
1 KB

ConfigTool.exe

ConfigTool.pdb
PDB 文件
6,075 KB

dhconfigsdk.dll
3.3.8.6041
dhconfigsdk

dhconfigsdk.pdb
PDB 文件
1,129 KB

DhDecode.dll

dhdvr.dll
3.3.8.6041
dhdvr

dhdvr.pdb
PDB 文件
1,305 KB

dhnetSDK.dll
3.3.8.6041
dhnetSDK

dhnetSDK.pdb
PDB 文件
3,057 KB

dhplay.dll
3.27.0.710
dhplay

DllDeinterlace.dll
1.1.0.2
DllDeinterlace

dllh264.dll

dllmpeg4.dll

language.ini
配置设置
7 KB

Open the software

Device List

IP Address	Port	Subnet Mask	Default Gateway	Mac Address
10.10.4.205	37777	255.255.0.0	10.10.0.1	90:02:a9:7f:d8:21
10.10.4.123	37777	255.255.0.0	10.10.0.1	52:54:4c:d5:ec:ad
10.10.6.86	40006	255.255.0.0	10.10.0.1	90:02:a9:01:1b:2d
10.10.4.144	37777	255.255.0.0	10.10.0.1	90:02:a9:00:aa:8b
10.10.6.87	40005	255.255.0.0	10.10.0.1	52:54:4c:d9:50:b8

find your device IP

If your IP don't appear,click here

if you don't know the IP, you can find the MAC first .It's on the main borad.Then you'll know the IP.

Tip: You can click "login" button directly and then input corresponding information to login.

IPv4

Upgrade

Refresh

Login

Logout



Device List

IP Address	Port	Subnet Mask	Default Gateway	Mac Address
10.10.4.205	37777	255.255.0.0	10.10.0.1	90:02:a9:7f:d8:21
2001:da8:207::9402/64	37777		2001:da8:207...	90:02:a9:7f:d8:21
10.10.4.123	37777	255.255.0.0	10.10.0.1	52:54:4c:d5:ec:ad
2001:da8:207::9403/64	37777		2001:da8:207...	52:54:4c:d5:ec:ad
10.10.6.87	40005	255.255.0.0	10.10.0.1	52:54:4c:d9:50:b8
2001:250:300::1:2/112	40005		2001:250:300...	52:54:4c:d9:50:b8
fe80::5054:4cfe:fed9:50b8/64	40005		fe80::	52:54:4c:d9:50:b8
10.10.6.86	40006	255.255.0.0	10.10.0.1	90:02:a9:01:1b:2d
fe80::9202:a9ff:fe01:1b2d/64	40006		fe80::	90:02:a9:01:1b:2d
10.10.4.144	37777	255.255.0.0	10.10.0.1	90:02:a9:00:aa:8b

Click IP, then login

Tip: You can click "login" button directly and then input corresponding information to login.

All



Upgrade

Refresh

Login

Logout

Device List

IP Address	Port	Subnet Mask	Default Gateway	Mac Address
10.10.4.205	37777	255.255.0.0	10.10.0.1	90:02:a9:7f:d8:21
2001:da8:207::9402/64	37777		2001:da8:207...	90:02:a9:7f:d8:21
10.10.4.123	37777	255.255.0.0	10.10.0.1	52:54:4c:d5:ec:ad
2001:da8:207::9403/64	37777		2001:da8:207...	52:54:4c:d5:ec:ad
10.10.6.87	40005	255.255.0.0	10.10.0.1	52:54:4c:d9:50:b8
2001:250:3000:1::				52:54:4c:d9:50:b8
fe80::5054:4cff:f				52:54:4c:d9:50:b8
10.10.6.86				90:02:a9:01:1b:2d
fe80::9202:a9ff:f				90:02:a9:01:1b:2d
10.10.4.144				90:02:a9:00:aa:8b

Login

IP Address:

User Name:

Password:

Port:

Device user name and password

Default port: 37777



Network Parameter | PPPoE | System Information | **System Upgrade**

General Parameter

DHCP Enable

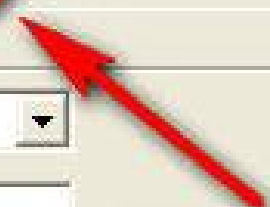
IPv4

IP Address: 10.10.4.123

Subnet Mask: 255.255.0.0

Gateway: 10.10.0.1

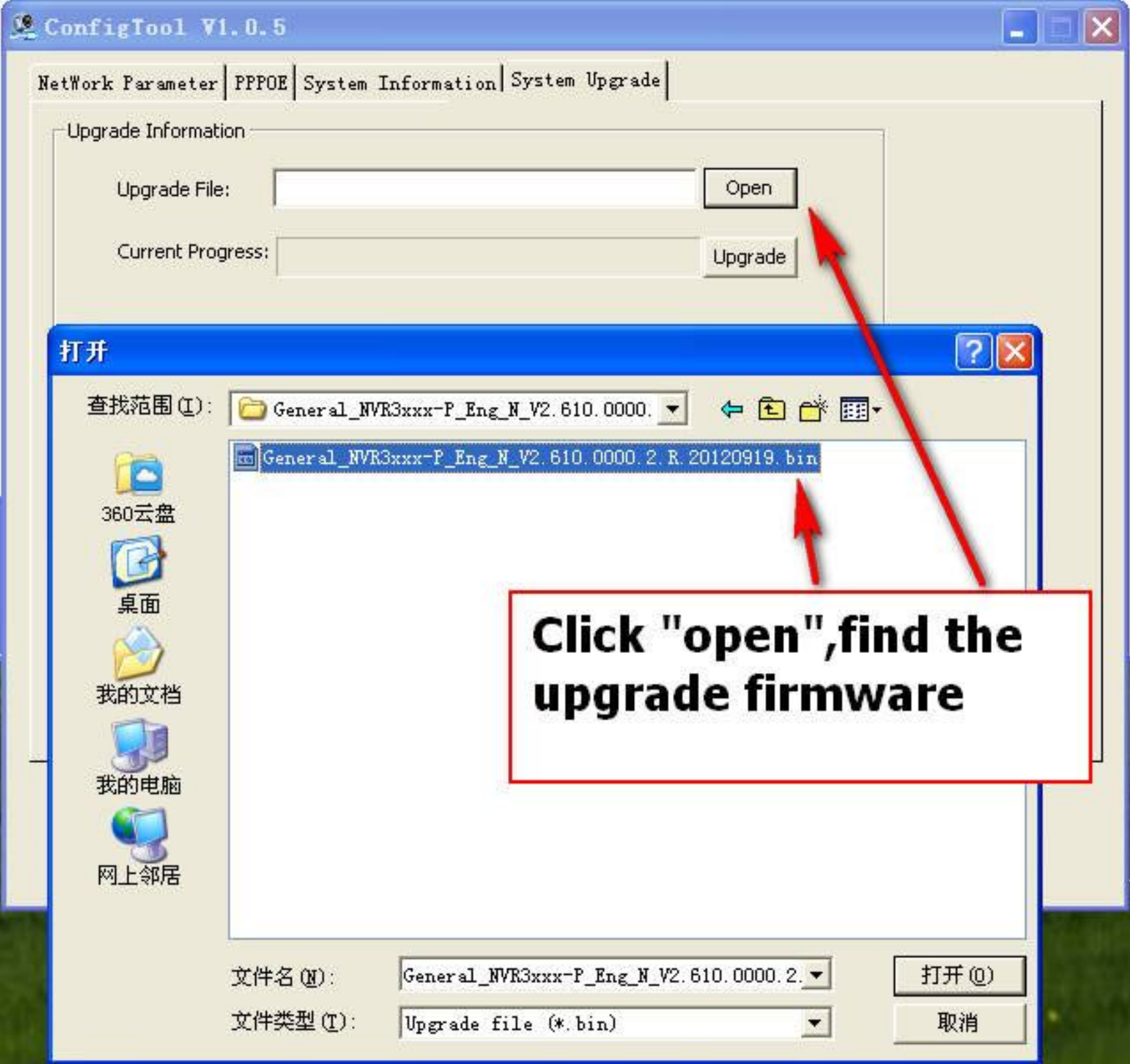
Mac Address: 52:54:4c:d5:ec:ad



Click system upgrade

Save

Return



Network Parameter | PPPoE | System Information | System Upgrade

Upgrade Information

Upgrade File:

Open

Current Progress:

Upgrade

打开

查找范围(I):



360云盘



桌面



我的文档



我的电脑



网上邻居

General_NVR3xxx-P_Eng_N_V2.610.0000.2.R.20120919.bin

Click "open", find the upgrade firmware

文件名(N):

打开(O)

文件类型(T):

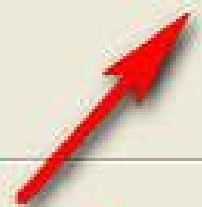
取消

Upgrade Information

Upgrade File: C:\Documents and Settings\18430\桌面\General

Current Progress: 

System is transmitting file now. Please wait...



Click "Upgrade"

Upgrade Information

Upgrade File: C:\Documents and Settings\18430\桌面\General Open

Current Progress: Upgrade

Upgrade succeeded. System is going to reboot!

Prompt Information

Upgrade succeeded. System is going to reboot!

确定

**The device will
reboot automatically
if the upgration is
sucessful.**

Save

Return