



DH_VTOXXEFQR_MultiLang _PN_128M_SIP_EMEA_V4.700.00 00000.0.R.230825

Release Notes

Legal Information

Copyright

© 2023 ZHEJIANG DAHUA VISION TECHNOLOGY CO., LTD. All rights reserved.

This document cannot be copied, transferred, distributed, or saved in any form without the prior written permission of Zhejiang Dahua Vision Technology Co., LTD (hereinafter referred to as "Dahua").

The products described in this document may contain the software that belongs to Dahua or the third-party. Without the prior written approval of the relevant owner, any person cannot (including but not limited to) copy, distribute, amend, abstract, reverse compile, decode, reverse engineer, rent, transfer, sublicense the software.

Trademarks

The logos for Dahua Technology, including the stylized "dahua" logo and the "TECHNOLOGY" text, followed by the acronym "HDCVI".
, , , , and **HDCVI** are the trademarks or registered trademarks of Dahua.

All other company names and trademarks mentioned herein are the properties of their respective owners.

Disclaimer

- This document is provided "as-is". Unless applicable law requires, nothing herein should be constructed as constituting any express or implied warranty.
- Information and views expressed in this document might change without prior notice.
- If there is any uncertainty or controversy, we reserve the right of final explanation.

Foreword

Disclaimer

- This document is provided "as-is". Unless applicable law requires, nothing herein should be constructed as constituting any express or implied warranty.
- Information and views expressed in this document might change without prior notice.
- If there is any uncertainty or controversy, we reserve the right of final explanation.

Trademarks

All the company names and trademarks mentioned herein are the properties of their respective owners.

Table of Contents

Legal Information	I
Foreword	II
1 Release Notes	4
1.1 Overview	4
1.2 New Features	4
1.3 Fixed Bugs	4
1.4 New Feature Details	4
1.4.1 New Languages	4
1.4.2 New web UI	5
1.4.3 Cascading Second Confirmation Station to VTH	5
1.5 Compatibility	9
1.5.1 Program	9
1.5.2 Browser	10
1.6 Software Environment	10
1.7 Pending Issues	10
1.8 Update Guide	10
1.8.1 Updating One by One	11
1.8.2 Updating in Batches	12

1 Release Notes

1.1 Overview

Item	Description
Product name	Villa Door Station
Version	V4.7
OS requirement	Linux
Release date	August 31, 2023

1.2 New Features

Feature	Description
1	<p>Provides 3 program packages. 34 languages are available.</p> <p>1. Western European languages: English (default), British English, Dutch, Spanish, German, Italian, French, Portuguese, Russian, Ukrainian, Hebrew, Arabic, Spanish (Latin America) and Portuguese (Brazil).</p> <p>2. Northeastern European languages: English (default), Serbian, Czech, Slovenian, Greek, Hungarian, Polish, Romanian, Slovak, Danish, Latvian, Finnish, Bulgarian, Lithuanian and Turkish.</p> <p>3. Southeast Asian languages: English (default), Traditional Chinese (Taiwan, China), Traditional Chinese (Hong Kong, China), Japanese, Thai, Korean and Vietnamese.</p>
2	New web UI
3	The second confirmation station is cascaded to VTH.

1.3 Fixed Bugs

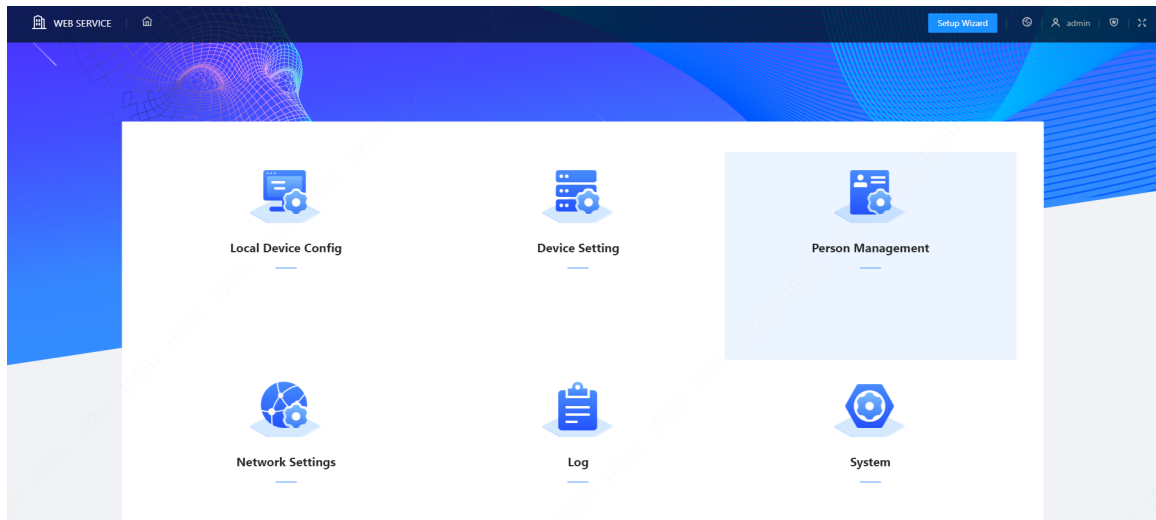
None.

1.4 New Feature Details

1.4.1 New Languages

- Western European languages: English (default), British English, Dutch, Spanish, German, Italian, French, Portuguese, Russian, Ukrainian, Hebrew, Arabic, Spanish (Latin America), and Portuguese (Brazil).
- Northeastern European languages: English (default), Serbian, Czech, Slovenian, Greek, Hungarian, Polish, Romanian, Slovak, Danish, Latvian, Finnish, Bulgarian, Lithuanian, and Turkish.
- Southeast Asian languages: English (default), Traditional Chinese (Taiwan, China), Traditional Chinese (Hong Kong, China), Japanese, Thai, Korean and Vietnamese.

1.4.2 New web UI



1.4.3 Cascading Second Confirmation Station to VTH

You can cascade the second confirmation station to the VTH.

1.4.3.1 Configuring One Device

Procedure

Step 1 Log in to the device webpage, set the device type as **Second Confirmation Station**.

Local Device Config

Device Type	Second Confirmation Station ▾
Device Name	<input type="text"/>
Villa Room No.	<input type="text" value="9901"/>
* VTO ID	<input type="text" value="8002"/>
Management Center	<input type="text" value="888888"/>
Management Center Call Peri...	<input type="text" value="00:00:00"/> ⌚ - <input type="text" value="23:59:59"/> ⌚ <input type="checkbox"/>
Call Period	<input type="button" value="Setting"/>

Step 2 Set **IP Address** of the SIP Server as the VTH IP address.

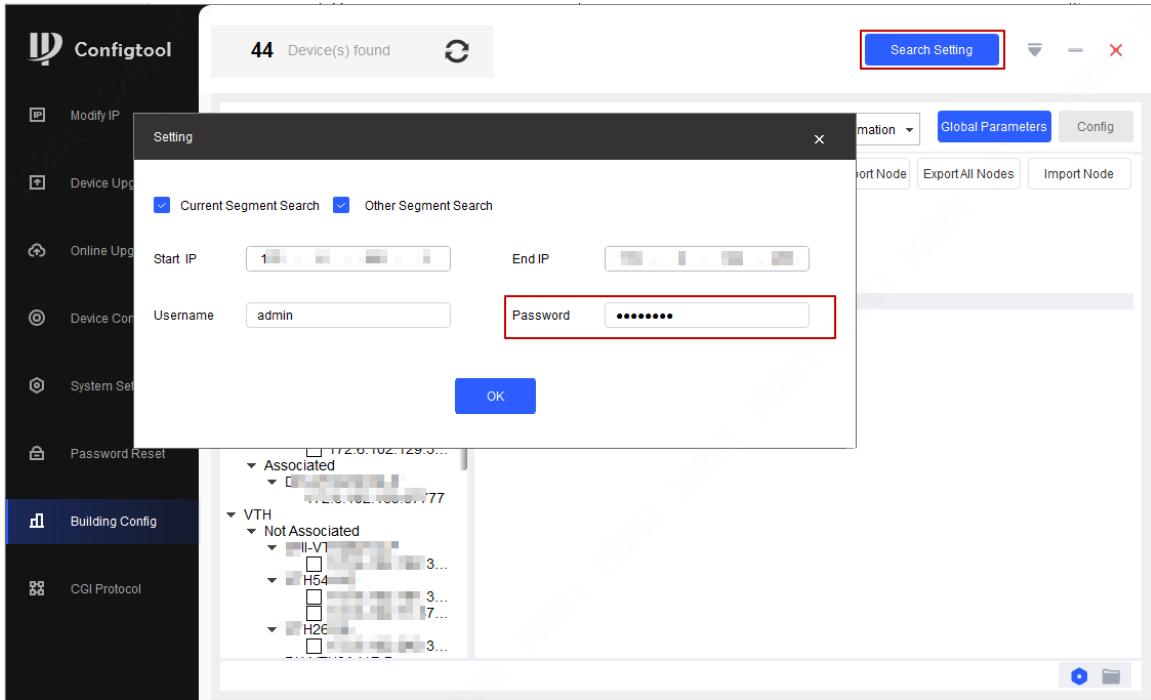
Server Type	Device <input type="button" value="v"/>
IP Address	172.6.6.6
Port	5060
Username	9901#200
Password	●●●●●●●●●●●●●●●●●●●●
SIP Domain	VDP
SIP Server Username	admin
SIP Server Password	●●●●●●●●●●●●●●●●●●●●
<input type="button" value="Apply"/> <input type="button" value="Refresh"/> <input type="button" value="Default"/>	

Parameter	Description
IP Address	Your planned IP address of the VTH.
Port	5060 by default.
Username	Leave it as default.
Password	
SIP Domain	
SIP Server Username	Username and password used to log into the VTH that serves as the SIP server.

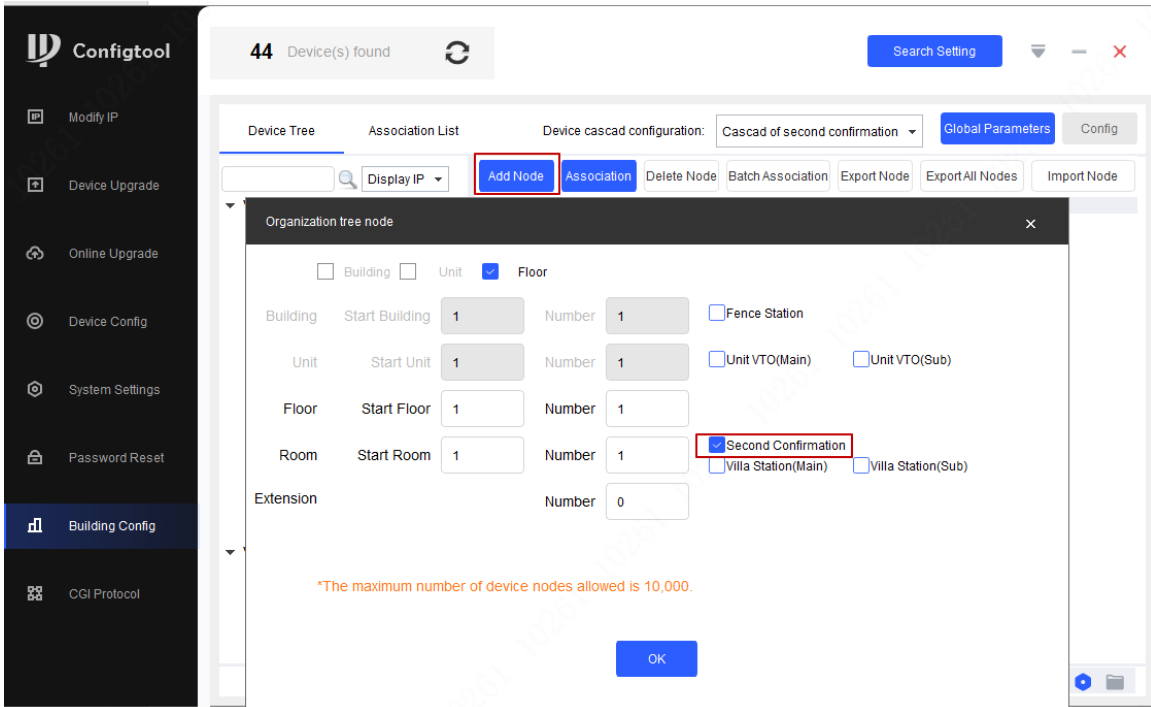
1.4.3.2 Configuring Devices in Batches through ConfigTool

Procedure

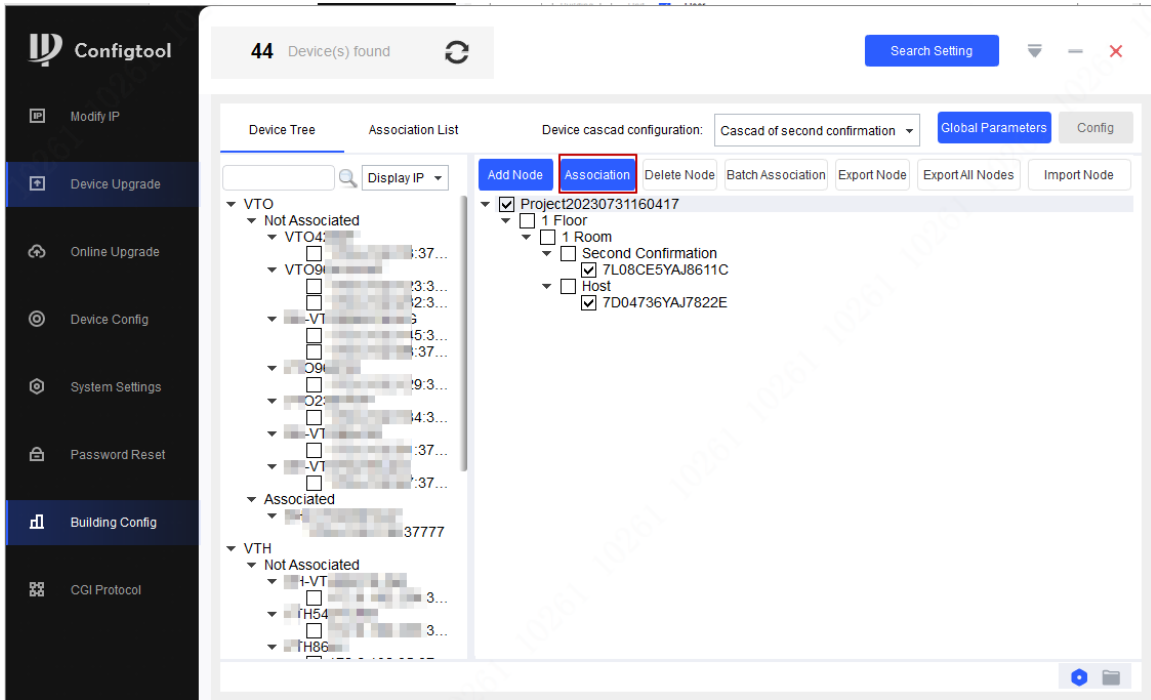
- Step 1** To configuring devices in batches through ConfigTool, open ConfigTool, and enter the device login password.



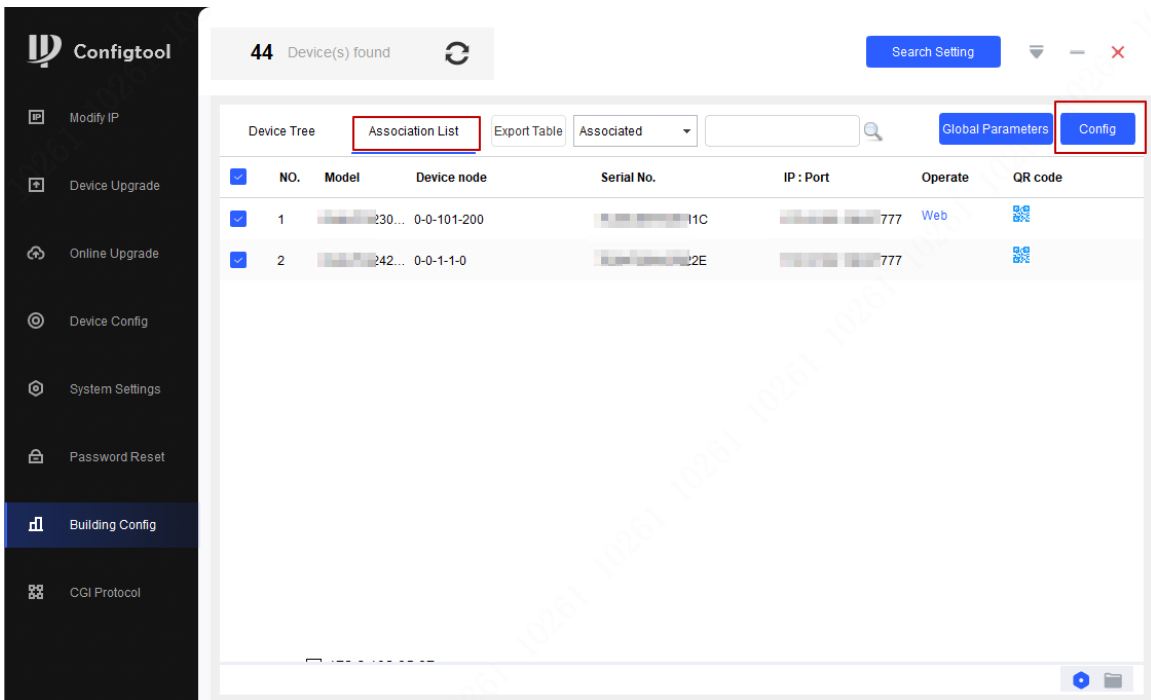
Step 2 Add device nodes.



Step 3 Associate the second confirmation station and the VTH.



Step 4 Select the VTO or VTH under **Association List**, and then click **Config**.



1.5 Compatibility

1.5.1 Program

Compatible with baseline V4.41, V4.5, V4.51 and V4.6.

1.5.2 Browser

IE10, Firefox, Chrome and Safari.

1.6 Software Environment

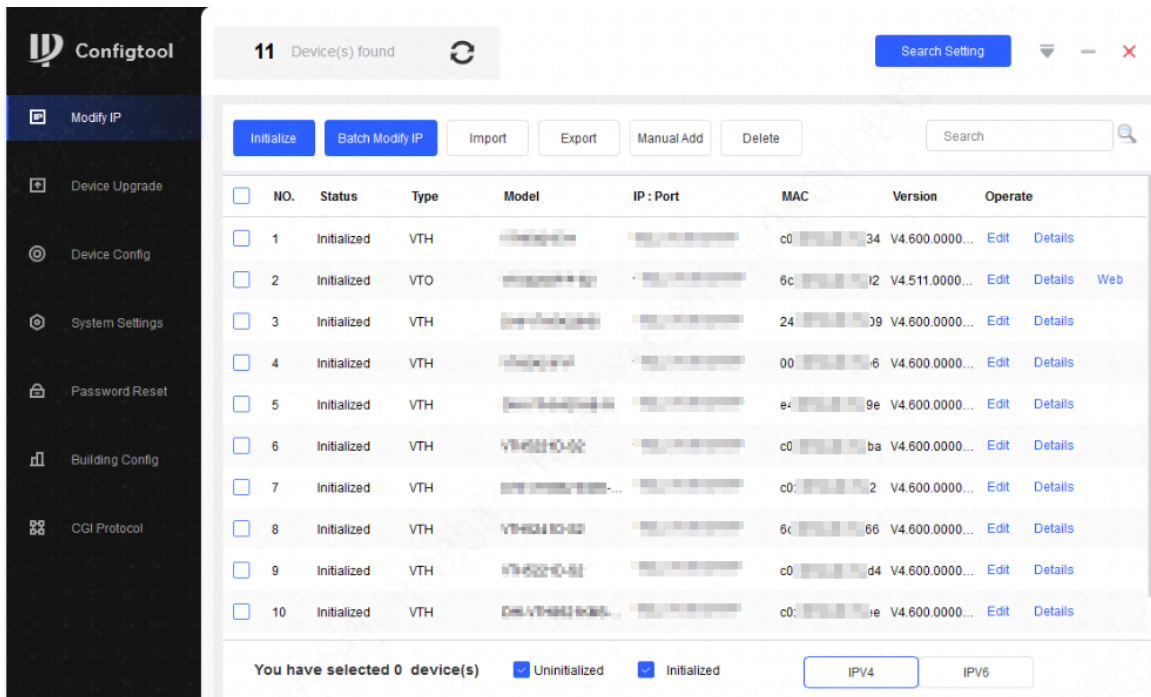
Category	Model	Version
VTO	DHI-VTO0301R-W	
	DHI-VTO2101E-P-S2	DH_VTOXXEFQR_MultiLang_PN_128M_SIP_Asia_V4.700.0000000.0.R.230825
	DHI-VTO1301R-W	
	DHI-VTO3311Q-WP	DH_VTOXXEFQR_MultiLang_PN_128M_SIP_CEE-Nordic_V4.700.0000000.0.R.230825
	DHI-VTO2301R-P	DH_VTOXXEFQR_MultiLang_PN_128M_SIP_EMEA_V4.700.0000000.0.R.230825
	DHI-VTO3312Q-P	
DHI-VTO2311R-WP		
ConfigTool	—	V5.001.9992002.0
DSS Pro	—	V8.002.0000001.0
DMSS	—	DMSS: V1.99.500

1.7 Pending Issues

None.

1.8 Update Guide

You can update one or more devices on the PC where the ConfigTool is installed.



The update speed varies by the package size.



If the device disconnects from the network during the update, the device might restart and automatically tries to update again.

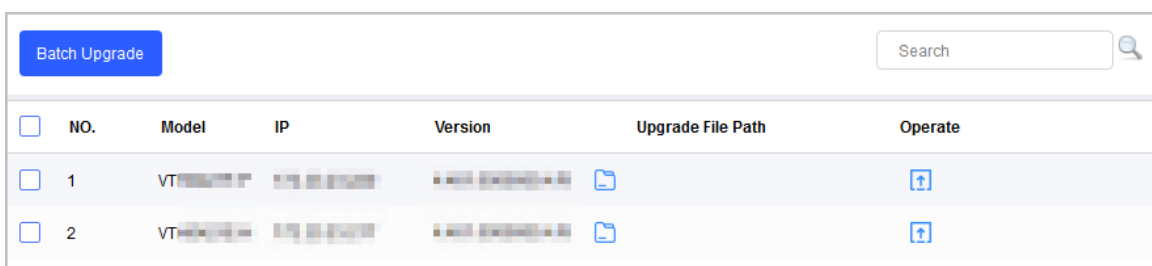
- If the system prompts **Upgraded successfully**, search for the devices again and the devices with updated versions are displayed.
- If the system prompts **Wait for retry**, wait for 1-2 minutes, and then try again.
- If the system prompts **Upgrade overtime** or **Failed to upgrade**, search for the devices, and update again.

1.8.1 Updating One by One

Procedure

Step 1 Click Device Upgrade.

Figure 1-1 Upgrade



Step 2 Click next to the device that you want to update. Select the specific file that needs to be upgraded, and then click **Open**.



If the device is not in the device list, perform search again.

Step 3 Click  to start updating.

After the update is complete, a **Prompt** dialog box will be displayed indicating the device will be restarted, and then the device restarts automatically.

1.8.2 Updating in Batches

Procedure

Step 1 Click .

Step 2 Select the devices that need to be updated.



- If the device is not in the device list, perform search again.
- Make sure all selected devices can receive the same software update.

Figure 1-2 Batch upgrade



Step 3 Click **Batch Upgrade**.

Step 4 Click **Browse** to select the files that need to be upgraded.

Step 5 Click **OK**.



VTHX421H needs to be updated twice.

1. Upgrade *part1.bin.
2. Upgrade *part2 after part1 is successfully upgraded.

ENABLING A SAFER SOCIETY AND SMARTER LIVING