

## User Guide

Before Use  
使用须知

Settings  
各种设置

Operation  
基本操作

Advanced  
附加功能

FAQ  
常见问题

**dahua** Dahua Technology CO.,LTD.  
TECHNOLOGY

Address: No.1199 Bin'an Road, Binjiang District, Hangzhou, PRC.

Postcode: 310053

Tel: +86-571-87688883

Fax: +86-571-87688815

Email: [overseas@dahuatech.com](mailto:overseas@dahuatech.com)

Website: [www.dahuatech.com](http://www.dahuatech.com)

ASL61XX  
[www.dahuatech.com](http://www.dahuatech.com)

# Table of Contents

<b>Product Features</b> .....	2	<b>Advanced Function</b> .....	26
<b>Notice</b> .....	5	Ring .....	26
<b>Product Specification</b> .....	7	Passage Mode .....	26
<b>Before Use</b> .....	9	Non-disturbance Mode .....	28
Terminology .....	9	Cancel Alarm .....	29
Battery Change .....	11	<b>Symbols</b> .....	30
Emergency Power .....	13	<b>FAQ</b> .....	31
<b>Settings</b> .....	14		
Volume .....	14		
Registration Mode .....	15		
Password Registration .....	16		
Change Administrator Password ...	17		
Card Registration .....	18		
Delete Password .....	19		
Delete Card .....	20		
<b>General Settings</b> .....	21		
Password Unlock .....	21		
Card Unlock .....	23		
Mechanical Key Unlock .....	24		
Lock Door .....	25		

## Product Features

### Function



#### Password Lock

Unlock by password, ideal for people in city.



#### Password Security

xxx+password+xxx, preventing password to be seen by others.



#### Lock Invalid Password

Invalid password of three times will cause system to be locked for three minutes.



#### Lock Invalid Card

Invalid card swiping for five consecutive times will cause system to be locked for three minutes.



#### Waterproof Level IPX4

Ideal for normal water environment.



#### Spare Key

In case you forget the password, you can use spare key to unlock.



#### Non-electronic Key Trigger Alarm

Any behavior to unlock door via mechanical keyhole will immediately trigger alarm.



#### Scoop-proof

Prevent scoop from door slot.

## Product Features

### Convenient Function



#### One Card Unlock

Door adopts Mifare card developed by Philips, three steps to setup.



#### All-in-one Card

Combine residence access control card and residence door card.



#### Emergency Power Supply

9V battery outside door provides direct power supply.



#### Multi-card Quick Sign Up

After enter sensor card status, you can finish sign up of all cards.



#### Passage Mode Free In/Out

Passage Mode status, door hand always valid and can be unlocked without password or card.



#### Non-disturbance Mode

Under Non-disturbance Mode, door can only be unlocked by administrator password.

### Comfortable Function



#### Touch Key Soft Experience

Touch adopts American Silicon valley technology with soft operation and sensitive response.

## Product Features

### Comfortable Function



#### Audio Prompt

Setup done by following audio prompt, no need to read thick user's manual.



#### Battery Warning

When battery  $\leq 4.5V$ , warning symbol and sound are both on.



#### Super Large Storage

Sensor card can store up to 50 pieces, and password can store up to 50 groups.

### Durable Function



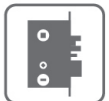
#### Super Weather-proof

Surface adopts imported high temperature plastic powder. Salt spray test achieves 200 hours.



#### Zero Failure

Mifare card is contactless which eliminate problem due to touch and degaussing.



#### Super Long Life

Lock body without failure can be used up to 100,000 times.



#### Button will not strain

Touch button eliminate possibility of strain.

## Notice

### Symbol



means additional notes of content.



means forbidden behavior during product usage.



means behavior by user of the product.



Warning or Notice prevents product damage and avoids influence on after-sales service.

### Announcement

For your safety and prevent accidents caused by the loss and inconvenience, be sure to read the following, and properly use the product.



■ Do not reveal password to others and periodically change password.

☞ The possibility of accidental theft exists.

■ Do not deliberately irrigate products.

☞ The possibility of failure exists.

## Notice

### Announcement



- Keep intelligent lock smooth during operation.
  - ☞ Interruption of operation is too long. (Under sign in mode, there is no action 15s after audio prompt/5s interval between two swiping of card /Not swipe card 15s after calling out keyboard/No password input /under all conditions, interruption in password input exceeds 5s. ) It will enter sleep mode. To re-enter, you need to enter password.
- Do not aimless frequent touch keys, do not use ballpoint pens and other hard objects to touch the buttons.
  - ☞ Possibility of product damage exists.
- Please set to Non-disturbance Mode for prolonged absence.
  - ☞ Right to open the door is protected, and more secure.
- Make sure that the positive and negative direction of battery match instruction in battery box during installation.
- Wrong direction could lead to rupture, leak, over-heat and other failures.
  - ☞ Possibility of failure exists.
- Do not use water to wash when cleaning, do not use gasoline, alcohol to wipe.
  - ☞ The possibility of failure and the resulting damage to the product or cause a fire exists.
- After the low-voltage prompts, replace the battery as soon as possible.
  - ☞ You may not be able to lock door normal.

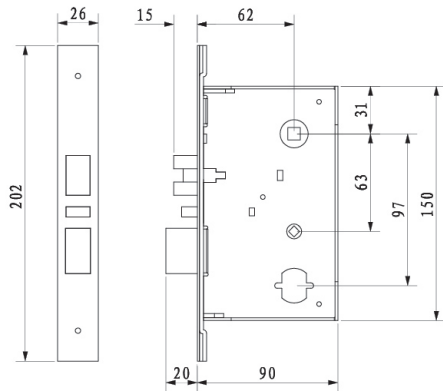
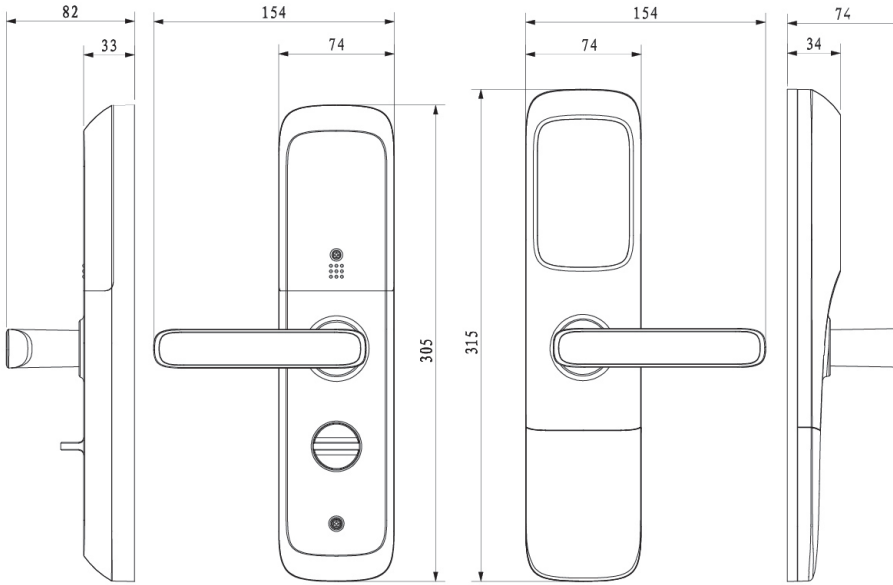
## Product Specification

### Specification

Item	Parameter
Card Type	Mifare 1
Card Features	Contactless, high security, all-in-one possible
Sensor Distance	< 20mm
Sensor Time	< 0.5s
Card Storage Capacity	50
Keyboard Type	All-touch keyboard
Password Length	6-12 bits
Password Storage Capacity	50
Privacy Password	Unlock password (consecutive) mixed with random numbers. i.e. 324+123456 +97 (123456 is password).
Working Voltage	DC4.5V ~ 6.5V, 4 1.5V "AA" battery
Battery Life	About 1 year (10 units/D)
Low Battery Warning	< DC4.5V
Emergency Power Supply	9V battery
Auto Lock	Invalid card swiping for five consecutive times/Invalid password input for three consecutive times will cause system to be locked for three minutes.
Door Status Display	False lock status, lock status, channel mode
Lock Body	American standard
Door Thickness	Wooden door 40-55mm
Position Dimension	Door margin 62mm, central distance 97mm
Product Standard	GA374-2001 (e-lock)
Working Temperature	-30~+70°C
Relative Humidity	10%-93%
Restore Default	Support
Reset	Support
Ring	Support
Built-in Buzzer	Support
Built-in Loudspeaker	Support

# Product Specification

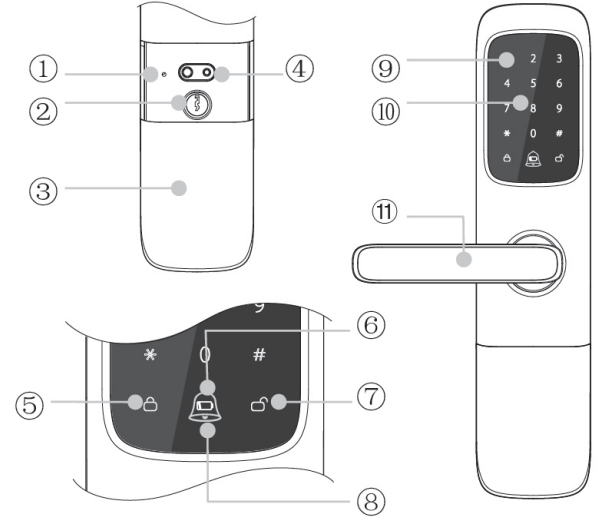
## Product Specification



# Terminology

## Outer Panel (Outdoor)

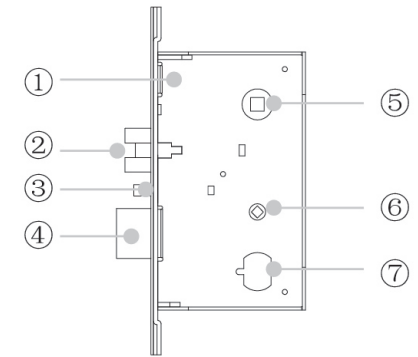
①	Reset
②	Mechanical key pin
③	Emergency slide cover
④	Emergency power supply port
⑤	Close lock indicator
⑥	Low voltage indicator
⑦	Status on indicator
⑧	Ring button
⑨	Touch keyboard
⑩	Card swiping center
⑪	Handle



Before Use

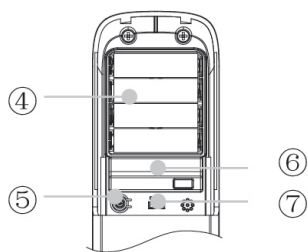
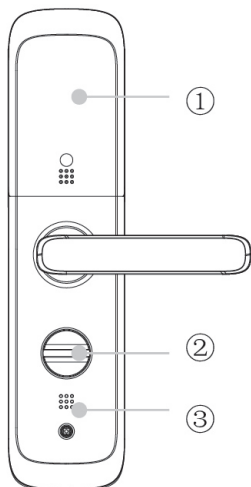
## Lock Body

①	Lock body
②	Latch bolt
③	Safety bolt
④	Dead bolt
⑤	Hand hole
⑥	Knob hole
⑦	Lock pin installation hold



# Terminology

## Inner Panel(Indoor)



①	Battery Cover
②	Deadbolt knob
③	Loudspeaker
④	Battery box
⑤	Functional key
⑥	Serial
⑦	Volume switch



Case surface uses high-temperature powder for protection, its salt spray test can reach 200h. However, if there is dirt on surface, clean up ASAP. Do not wipe with organic solvent.



Do not use scouring pad, clean ball to clean touch panel, otherwise may damage the surface.

# Battery Change

## Battery Specification



Warning: Please use batteries listed below for best product performance.

Type	IEC	China	Japan	U.S.A.
Carbon Zinc Manganese Battery	R20	No.1 battery	UM-1	D
	R14	No.2 battery	UM-2	C
	R6	No.5 battery	UM-3	AA
	R03	No.7 battery	UM-4	AAA
Alkaline Zinc-Manganese Dioxide Battery	LR20	No.1 Alkaline battery	AM-1	D
	LR14	No.2 Alkaline battery	AM-2	C
	LR6	No.5 Alkaline battery	AM-3	AA
	LR03	No.7 Alkaline battery	AM-4	AAA

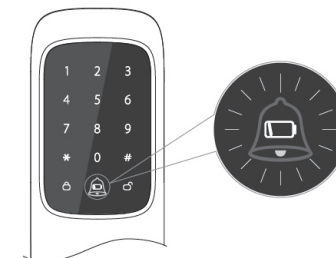


Battery manufacturer, production date, and environment are different, so battery lives vary. i.e. 4 AA alkaline battery as use 10 times per day, could last about 1 year.

## Step to Change

### ① Warning of battery change:

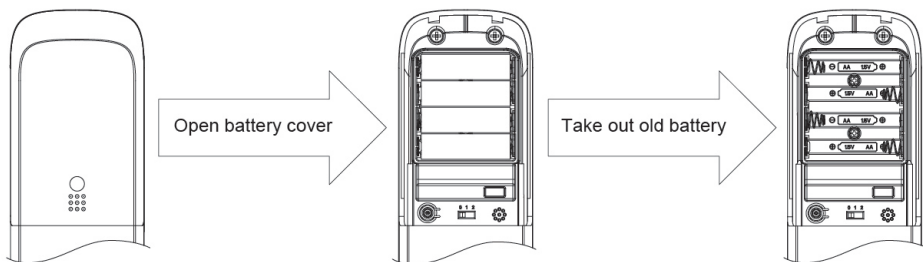
Unlock via password or card, symbol flashes as in figure on the right. Meanwhile, you will hear warning to change battery. You shall change battery ASAP for continuous usage.



## Battery Change

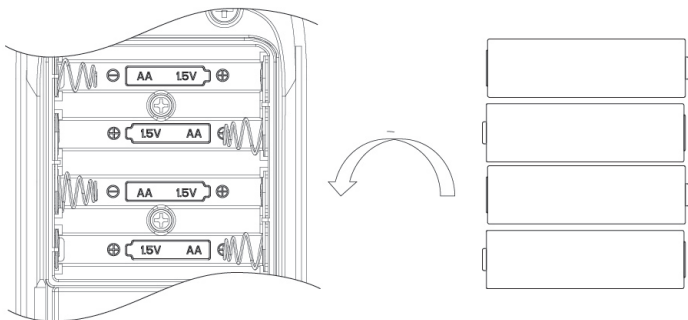
### Step to Change

#### ② Take Out Battery:



#### ③ Install Battery:

Battery is marked with positive and negative ends as in the figure below. Make sure you place



- Battery direction must be correct, otherwise you cannot use it.
- After you place battery properly, touch keyboard is on which means that new battery is working.
- Battery leak may cause product failure, please check regularly (about 6 months).
- When battery is low, before replacement, you cannot use password, card registration and etc.
- Please recycle the replaced battery.

## Emergency Power

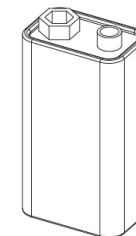
### Method of Use

#### ① Low battery, cannot unlock door

When you unlock via password or card, if you cannot push hand down, it means battery is low.

#### ② Purchase 9V power supply

Purchase 9V battery as shown on the right.



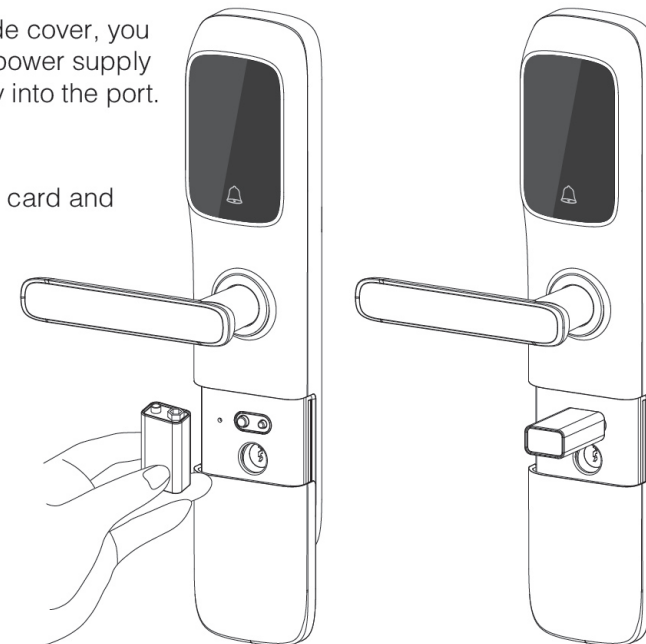
! Please use alkaline battery.

#### ③ Place Battery

Open emergency slide cover, you can see emergency power supply port, place 9V battery into the port.

#### ④ Unlock

Unlock via registered card and password.





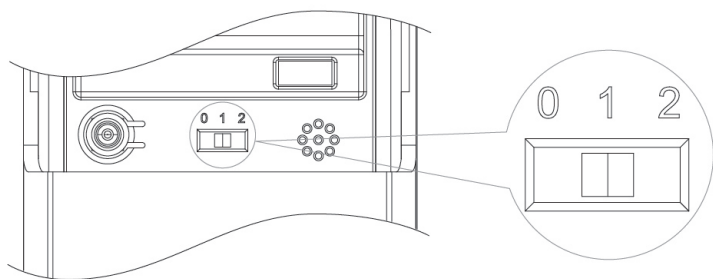
# Volume

## Volume Setting

- ① Open battery cover, find dial-up switch.
- ② Intro to Shift

The following figure has three shifts:

- 【 0 】 shift: mute.
- 【 1 】 shift: low volume.
- 【 2 】 shift: large volume.



- 【 0 】 shift: No sound when unlock/lock door. (except alarm and setup sound)
- 【 1 】 shift: Prompt volume is low and lower than setup sound. It is default shift.
- 【 2 】 shift: Prompt volume is high, same as setup sound.

# Registration Mode

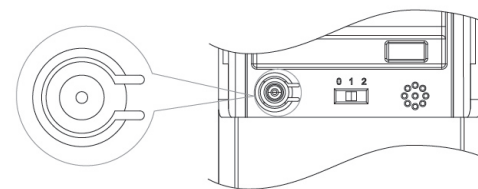
## Name Explanation

Key and card used in normal times need to be stored in system database via registration mode. To modify administrator password or to delete card/key, you must enter registration mode to do so.

## Operation Method

- ① Open battery cover, press function button.

Location of function button is shown on the right, shortly press prompt and input administrator password.



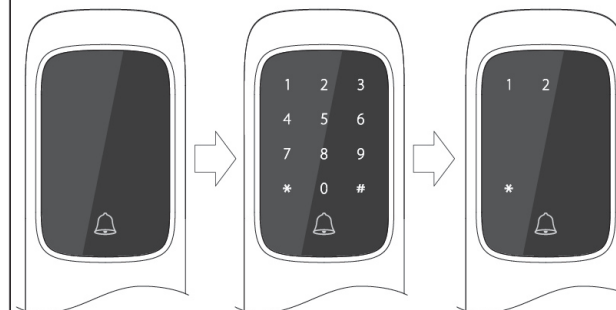
Default administrator password is: 123456.

- ② Input administrator password.

Enter registration mode, touch panel is shown as follows and number buttons light up. Now you can enter administrator password following by #, to enter registration mode.



- When administrator enters wrong password, a prompt appears, and system enters sleep mode to save energy. Please press registration button and enter setting mode again.
- Enter correct administrator password, go to next level, see touch panel as third figure on the right.

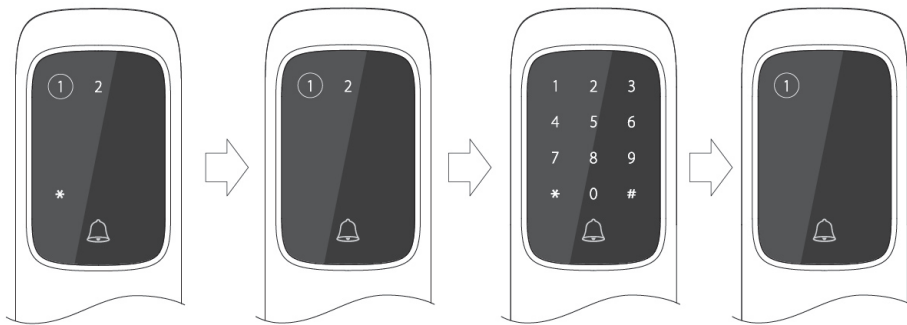


# Password Registration

## Step to Set

- ① Enter registration status.
- ② Press **【1】** according to prompt, and press **【1】** again.

As shown in the third figure, keyboard will all light up.



- ③ Enter password to register.

Enter 6 to 12 digits of password followed by #. Enter the password again followed by # for confirmation. After successfully registered, follow prompt to press **【1】** and press registration button to exit. Now touch panel is shown as the fourth figure above. Then follow steps above, and press registration button to exit and enter sleep mode.

- For security reason, please set password within 6–12 digits.
- Password only contains numbers, no symbols.

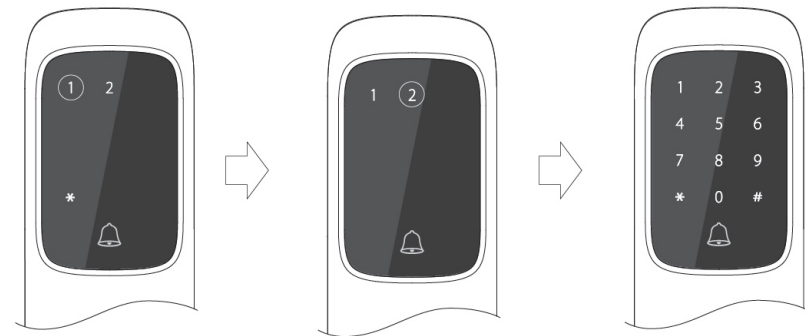
- If you enter password below 6 digits or over 12 digits, system will show error, and you shall re–enter password within 6 to 12 digits.
- If your confirmation password does not match input password, you shall re–enter confirmation password.
- If you forget the password you enter at first time, you can press registration button to end registration and enter again.
- You can store up to 50 groups of password. When you try to enter more password, system will prompt.

# Change Administrator Password

## Step to Set

- ① Enter registration mode.
- ② Press **【1】**, and press **【2】** following instructions.

Keyboard will all light up as shown below.



- ③ Enter new administrator password.

Enter 6 digit administrator password followed by# and enter the same password followed by # again to confirm.

- Administrator password is very important as the solely identification to enter registration mode and perform settings. Please keep it securely.

- Please set administrator password with 6–digit.
- Password only contains numbers.

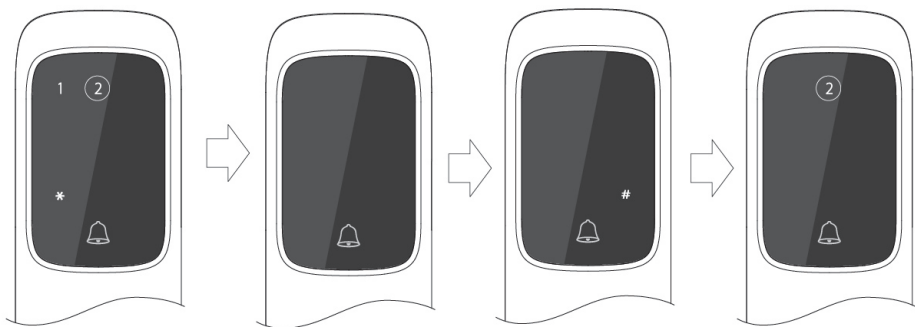
- Password shall be within 6 to 12 digits, and if you enter wrong number of digits, it will warn you.
- When two passwords do not match, you shall re–enter password.
- If you forget password your entered, just press registration button to exit and set again.

## Card Registration

### Step to Set

- ① Enter registration status.
- ② Press **【2】** following instructions.

Press 2, keyboard light off. You can hear Card registration status. Please touch the card you want to register one by one and press #.



- ③ Touch card to sign up.

Place card close to touch panel. When you hear a DI sound, the card has been read by the device shown as 3rd figure above. Touch all other cards and press # to save data when you are done. Now you can press 2 to continue registration, or press registration button to exit and go to sleep mode.

■ Registered card is unlock e-key, if lose, please delete the card ASAP.

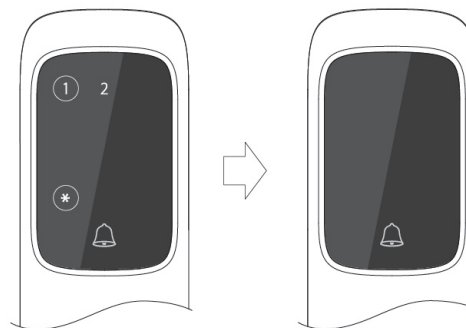
- Card has many types, we use Mifare card developed by Philips which is widely used as access control card in residence and company.
- If card has already been registered, system will inform you and will not influence normal operation.
- If card is not Mifare card or card is broken, system inform you it is invalid and will not influence normal operation.
- Card registration storage is 50 units. Over this limit will cause system to enter sleep mode.

## Delete Password

### Step to Set

- ① Enter registration mode.
- ② Press **【\*】** , **【1】** following instructions.

Now audio prompt is informing you that it is deleting, please wait. When passwords are all deleted, it enters sleep mode.



■ Administrator password has password management right, so you can only modify, cannot delete password. The delete password function may only delete all normal passwords.

■ Once you delete password, you cannot restore them. If you miss-press **【\*】** button, you can press registration button to exit and this will not delete the password.

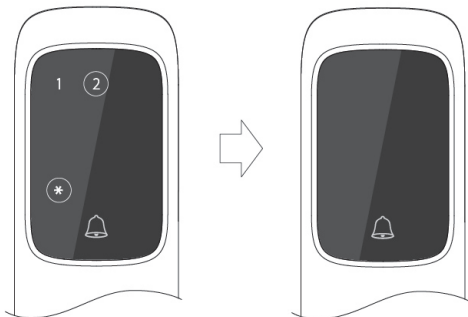
■ Password max storage is 50 groups. If you frequently forget password, we suggest delete all passwords and re-sign up to avoid over the limit.

## Delete Card

### Step to Set

- ① Enter registration mode.
- ② Press **【\*】** , **【2】** button following instructions.

Now audio prompt is informing you that it is deleting, please wait. When cards are all deleted, it enters sleep modes.



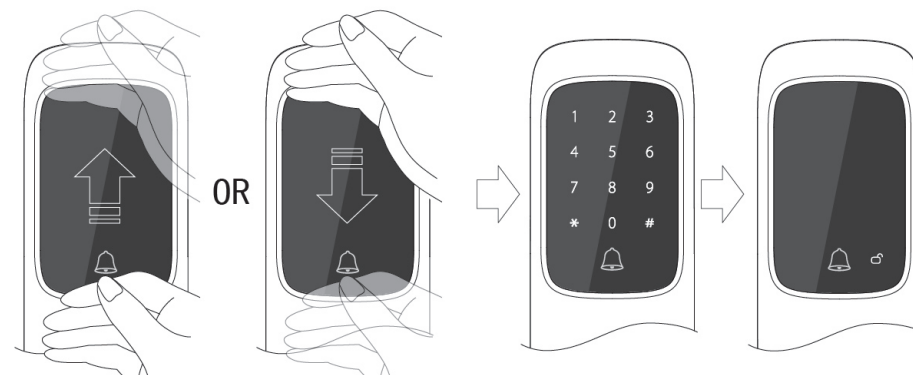
- Once you delete cards, you cannot restore them. If you miss-press **【\*】** button, you can press registration button to exit and this will not delete the card.
- Registered card can be used immediately. If lost, please delete all cards and re-sign up.

## Password Unlock

### General Password Unlock

- ① Push handle down to unlock.

When you hear prompt: please open, or when you hear light mechanic sound, push the handle download.



- Make touch smooth, once you hear a sound or keyboard lights up, remove you hand from panel.

- ② Enter registered password.

Enter password followed by #, See 4th figure above, unlock button is in the lower-right corner.

- The product has privacy password function. You can input password mixed with random numbers. i.e. 324+123456+97 (123456 is password).

Note: System has security function, if you enter wrong password for three consecutive times, system will lock for three minutes. After three minutes, system automatically unlocks; or if someone is inside, can press door hand to unlock; or press registration button for 3s to unlock.

# Password Unlock

## General Password Unlock

- ③ Touch to wake up keyboard.

You can wake up keyboard as follows.

! If you cannot properly unlock door, and you see prompt with symbols, please refer to Symbols page for detailed possible cause.

## Administrator Password Unlock

- ① Wake up keyboard.

Refer to Password Unlock page.

- ② Enter registered password.

Prompt of Forced to lock internally means deadbolt is out, so it is safe since general password and card both cannot unlock door.

- ③ Enter administrator password.

Enter password followed by #. Unlock button in the lower-right corner shows blue, it is successful.

✎ Note: Administrator password can force door to be unlocked, please keep it securely.

- ④ Push down hand to unlock.

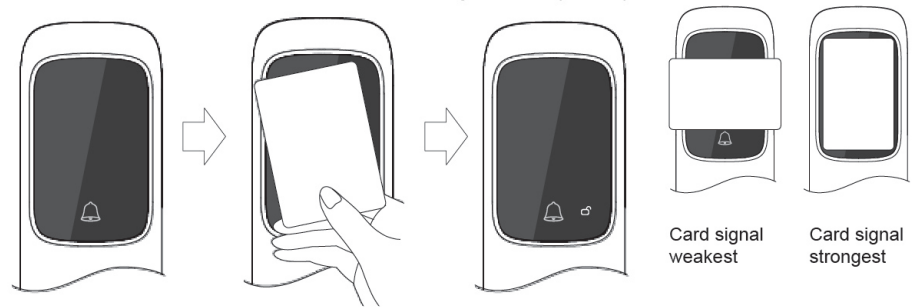
When you hear prompt, push the hand downward to unlock, or when you hear light mechanic sound, push the handle downward.

# Card Unlock

## Step to Operate

- ① Place card close to touch panel.

You will hear a DI sound followed by audio prompt.



✎ Sensitivity of card depends on its angle touching reading panel. Place card as the 4th figure above as recommended.

- Unregistered card will be invalid.
- If you hear a DI sound when you swipe card, but cannot unlock door. Make sure the battery is not too low.
- Once card is broken, please either delete it in system or destroy it and re-register with a new card.

! Note: System has security function, if you enter wrong password for three consecutive times, system will lock for three minutes. After three minutes, system automatically unlocks; or if someone is inside, can press door hand to unlock; or press registration button for 3s to unlock.

- ② Push down hand to unlock.

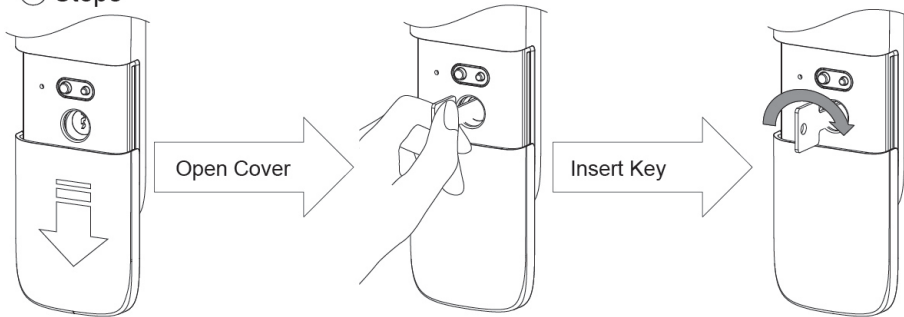
When you hear prompt: please open, or when you hear light mechanic sound, push the hand downward.

! If you cannot properly unlock door, and you see prompt with symbols, please refer to Symbols page for detailed possible cause.

# Mechanical Key Unlock

## Step to Operate

### ① Steps



General Settings

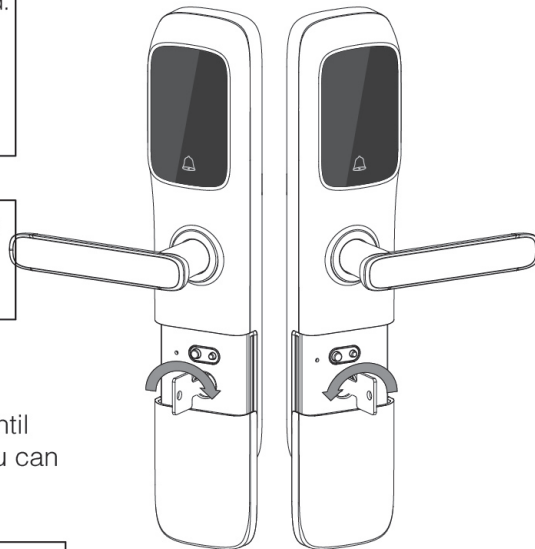
■ The pin can alarm, so when you rotate key, you can hear alarm sound. Do not work, you can open battery cover and long press registration button for 3s to cancel alarm. Or use valid card to cancel alarm.

■ Direction to turn key depends on its installation direction; please refer to figure on the right.

### ② Unlock

Rotate key clockwise in place until cannot rotate anymore. Now you can push/pull door to open.

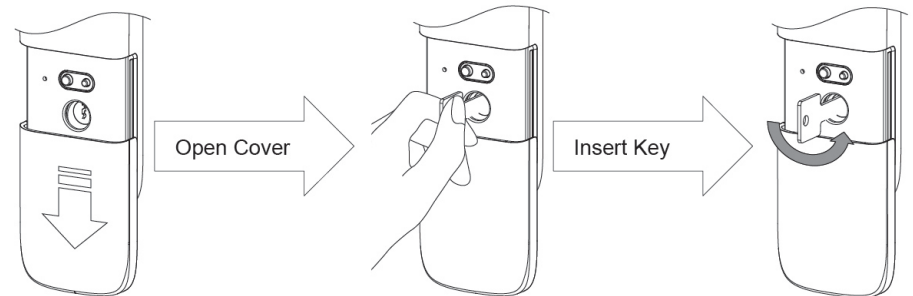
■ Rotate backward and take out key.



# Lock Door

## Lock from Outside

### ① Steps



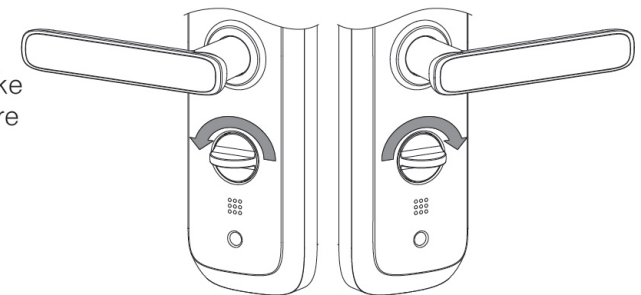
■ Rotate backward and take out key.  
■ Direction to rotate key and direction to unlock key are opposite. Please refer to figure in the previous page.

General Settings

## Lock from Inside

### ① Lock knob.

Rotate the knob to make deadbolt out. See figure on the right.



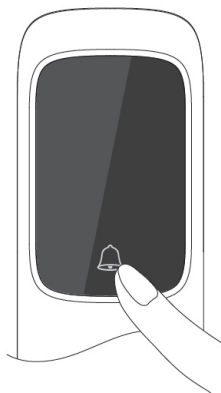
! ■ Once door is locked, if you try to unlock it from outside, system prompts that door is locked from inside. The door can only be unlocked from the inside.

## Ring

### Step to Operate

#### ① Steps

- If touch panel is awake, just touch it lightly.
- If touch panel is sleeping, long press ring for 1s.



## Passage Mode

### Terminology

Like concept of CHANNEL, when door hand is always under valid status, you can push hand to open it.

- In family environment, channel mode is recommended.
- In office environment, channel mode is recommended.

## Passage Mode

### Step to Set

#### ① Wake up keyboard

Please refer to Password Unlock.

#### ② Long press **【#】** for 3s.

After 3s, you will hear a DI sound with audio prompt asking you to enter administrator password followed by # to enable passage mode.

#### ③ Enter administrator password.

Enter password followed by **【#】**, you will hear audio prompt.

### Exit Passage

#### ① Wake up keyboard.

#### ② Long press **【#】** for 3s.

After 3s, you will hear a DI sound with audio prompt asking you to enter administrator password followed by # to disable passage mode.

#### ③ Enter administrator password.

Enter password followed by **【#】**, you will hear audio prompt.



Note: Under Passage Mode, ring function is still enabled. Under Free Scramble Mode, ring is disabled.

## Non-disturbance Mode

### Terminology

Like the concept of Non-disturbance Mode, under this mode, registered general password and card are both limited.



- In family environment, if you prefer a quiet atmosphere, Non-disturbance mode is recommended.
- In office environment, if you have a meeting, discuss confidential contents, or prevent non-employee from entering the office during closing time, Non-disturbance mode is recommended.

### Step to Set

- ① Wake up keyboard.
- ② Long press **【\*】** for 3s.

After 3s, you will hear a DI sound with audio prompt asking you to enter administrator password followed by # to disable right.

- ③ Enter administrator password.

Enter password followed by **【#】** to confirm with audio prompt.

### Exit Non-disturbance Mode

- ① Wake up keyboard.
- ② Long press **【\*】** for 3s.

After 3s, you will hear a DI sound with audio prompt asking you to enter administrator password followed by # to enable right.

- ③ Enter administrator password.

Enter password followed by **【#】**, you will hear audio prompt.

## Cancel Alarm

### Lock Pin Alarm



- To risk of someone unlock door from lock pin, pin is designed with alarm function.
- Alarm sound is a frequent DI sound.



- Open battery cover and long press registration button for 3s to cancel alarm.
- Swipe card to cancel alarm.
- Enter valid password to cancel alarm.

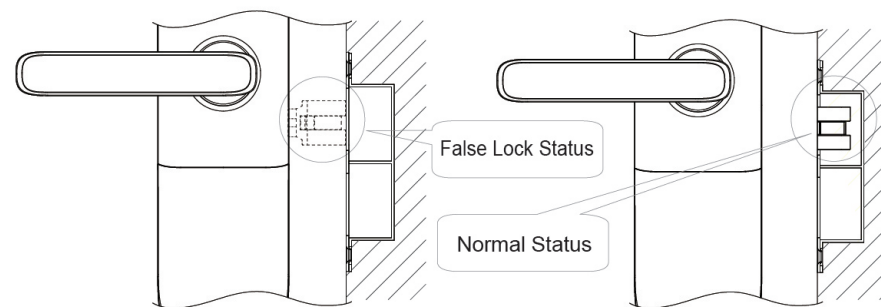
### False Lock Alarm



- Door lock is designed with false lock alarm in case you has not locked door but you think you lock it.
- False lock alarm is DI sound for 15s.









- Lock door and latch bolt is out, alarm is cancelled.
- Open door and alarm is cancelled.





# Symbols

## Notes of Symbols

	Status	Always	<ul style="list-style-type: none"> <li>■ Long press 1s to ring.</li> <li>■ Under Non-disturbance Mode, ring is mute.</li> </ul>
	Status	Blue	<ul style="list-style-type: none"> <li>■ Valid to unlock.</li> </ul>
		Red	<ul style="list-style-type: none"> <li>■ False alarm, close door and eject bolt.</li> <li>■ Pin alarm, long press registration button for 3s or refer to P30.</li> </ul>
	Status	Red	<ul style="list-style-type: none"> <li>■ Forced lock status, administrator password unlock or unlock from inside.</li> </ul>
	Status	Red	<ul style="list-style-type: none"> <li>■ Low battery, please change battery.</li> </ul>
	Status	Blue	<ul style="list-style-type: none"> <li>■ Under registration mode, if to delete saved electronic key, you shall press 【*】, and press corresponding number.</li> <li>■ Under password input status, 【*】 cannot delete.</li> <li>■ Under non-registration mode, long press 【*】 for 3s to enter Non-disturbance setup.</li> </ul>
		Blue	<ul style="list-style-type: none"> <li>■ Under registration mode, press 【#】 to confirm.</li> <li>■ Under password input status, press 【#】 to confirm.</li> <li>■ Under non-registration mode, long press 【#】 for 3s to enter passage setup.</li> </ul>
	Status	Blue	<ul style="list-style-type: none"> <li>■ Under registration mode, press 【#】 to confirm.</li> <li>■ Under password input status, press 【#】 to confirm.</li> <li>■ Under non-registration mode, long press 【#】 for 3s to enter passage setup.</li> </ul>

# FAQ

When product cannot work properly, please confirm the following items. If you cannot solve the problem, please contact us.

## Power

Problem	Power Off	Solution	<ul style="list-style-type: none"> <li>■ Confirm if battery quality is poor.</li> <li>■ Confirm if battery terminals are opposite.</li> <li>■ Confirm if battery is powerless.</li> </ul>	Reference	P11-P12

## Password/Card

Problem	No Response	Solution	<ul style="list-style-type: none"> <li>■ Open emergency cover, use tool to lightly touch reset button. System will be waked up, and keyboard lights up.</li> <li>■ Confirm if operation timed out.</li> <li>■ Confirm if battery is powerless.</li> <li>■ Confirm password registration.</li> <li>■ Confirm if password entered is right.</li> <li>■ Confirm if you have pressed 【#】 to end.</li> <li>■ Confirm if device is under Non-disturbance mode.</li> <li>■ Confirm if card type is right.</li> <li>■ Confirm if the card is obtained through legal and proper channel.</li> <li>■ Confirm if card is right.</li> <li>■ Confirm if device is powered on.</li> <li>■ Confirm if card is close enough to sensor.</li> <li>■ Confirm if device is under Non-disturbance mode.</li> <li>■ Installation may have error, please contact us.</li> </ul>	Reference	P9
	Password cannot register				P16-P17
	Input password cannot unlock				P21-P22 P28
	Card cannot register				P18
	Swiping card cannot unlock				P23 P16 P7 P28
	Card swiping valid, door unlock abnormal				-

# 目录

产品特点	33	附加功能	57
注意事项	36	门铃使用	57
产品规格	38	通道模式	57
使用须知	40	免扰模式	59
专业名词	40	取消报警	60
电池更换	42	常见符号	61
应急电池	44	常见问题	62
各种设置	45	维修事宜	63
音量设置	45		
登记模式	46		
登记密码	47		
更改管理员密码	48		
登记卡片	49		
删除密码	50		
删除卡片	51		
基本操作	56		
密码开门	57		
卡片开门	58		
机械钥匙开门	59		
关门上锁	60		

# 产品特点

## 安心功能



### 密码在心安心出门

具备密码开锁功能，都市人的最大福音（强迫症的良方）。



### 防窥密码自在输入

xxx+密码+xxx，挑战旁人记忆无极限。



### 无效密码强制锁定

连续3次密码输入错误，设备系统强制锁定3分钟。



### 无效卡片强制锁定

连续刷5次（包括5张）无效卡时，设备系统强制锁定3分钟。



### 防水级别IPX4

一般的意外淋水不影响正常使用。



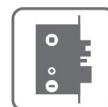
### 后备钥匙解后顾之忧

万一的万一，咱们还可以用机械钥匙开门。



### 非电子钥匙开启报警

只要通过机械钥匙孔开启门锁，均视为非法开启，系统立即触发报警。



### 美式锁体具备防插功能

与传统机械锁相比，多了一个保险舌，杜绝从门缝中通过卡片打开门。

## 产品特点

### 便捷功能



#### 一卡开启的是高效

门锁采用Philips公司开发的Mifare卡，3步完成设置。



#### 小区一卡通

可以将小区的门禁卡直接作为智能锁卡钥进行授权。



#### 应急电源没有意外

9V电池可以在门外直接接触供电，无需担忧万一没电。



#### 多卡快捷登记

进入感应卡等级状态后，可以一步完成所有感应卡的登记。



#### 通道模式自由出入

通道模式状态，门把手一直处于有效状态，无需解锁就能开启。



#### 免扰模式清净自在

免扰模式状态，已登记的电子钥匙均无效，唯有管理员密码有效。

### 舒适功能



#### 触摸按键柔滑体验

触摸采用美国硅谷技术，操作顺畅，感应灵敏。

## 产品特点

### 舒适功能



#### 语音提示倍感温馨

一切设定通过语音提示即可简单完成，无需翻看繁重的说明书。



#### 保姆功能电量提示

当电量 $\leq 4.5V$ 时，欠压符号就会及时点亮，同时伴有语音提醒。



#### 超大容量随意存储

感应卡可存50张，密码可存50组。

### 耐久功能



#### 超长耐候时间

表面采用进口高温塑粉，盐雾实验可达200小时，不用担心沿海气候。



#### 无故障感应卡

Mifare技术的卡片为无源非接触式卡，将接触和消磁故障概率降为零。



#### 超强使用寿命

锁体无故障运行可达10万次之久，只要不想换可以一直用下去。



#### 不会劳损的按键

由于按键采用触摸的方式，机械按键的疲劳故障将不复存在。

## 注意事项

### 符号说明



表示内容相关的附加说明。



表示产品使用时所禁止的行为。



表示产品使用者的行为。



表示为了防止产品受损、避免影响售后服务，特提供的警告或注意事项。

### 特别申明

为了您的安全、防止事故导致的损失以及带来的不便，务必阅读以下内容，并正确使用产品。



■ 密码不要告知他人，建议定期更换密码。

☞ 存在意外被盗的可能性。

■ 请勿故意对产品进行灌水。

☞ 存在导致故障的可能性。

## 注意事项

### 特别申明



■ 智能锁在操作时尽量保持流畅。

☞ 中断操作过长（登记模式下语音播报结束后15s没有动作，连续接触卡片中间停顿5s；开门唤醒键盘超过15s无刷卡、无输入密码；所有情况下输入密码中间停顿5s。均视为时间过长）将会进入休眠模式，需要重新唤醒。

■ 请勿无目的频繁触摸按键、请勿使用圆珠笔等硬物来触碰按键。

☞ 存在导致产品受损的可能性。

■ 长时间不在时建议设置成免扰模式。

☞ 开门权限受到保护，安全性更高。

■ 电池安装时请确认正负极方向与电池盒内的提示是否相同。

☞ 方向错误可能导致破裂、漏液、发热等故障。

■ 建议使用南孚的5号电池，其他品牌电池未必能够发挥产品的最优性能。

☞ 存在导致故障的可能性。

■ 打扫时请勿使用水进行冲洗，请勿使用汽油、酒精等进行擦拭。

☞ 存在导致故障以及致使产品受损或者火灾的可能性。

■ 低电压提示后，请尽快更换电池。

☞ 存在无法正常开关门的可能性。

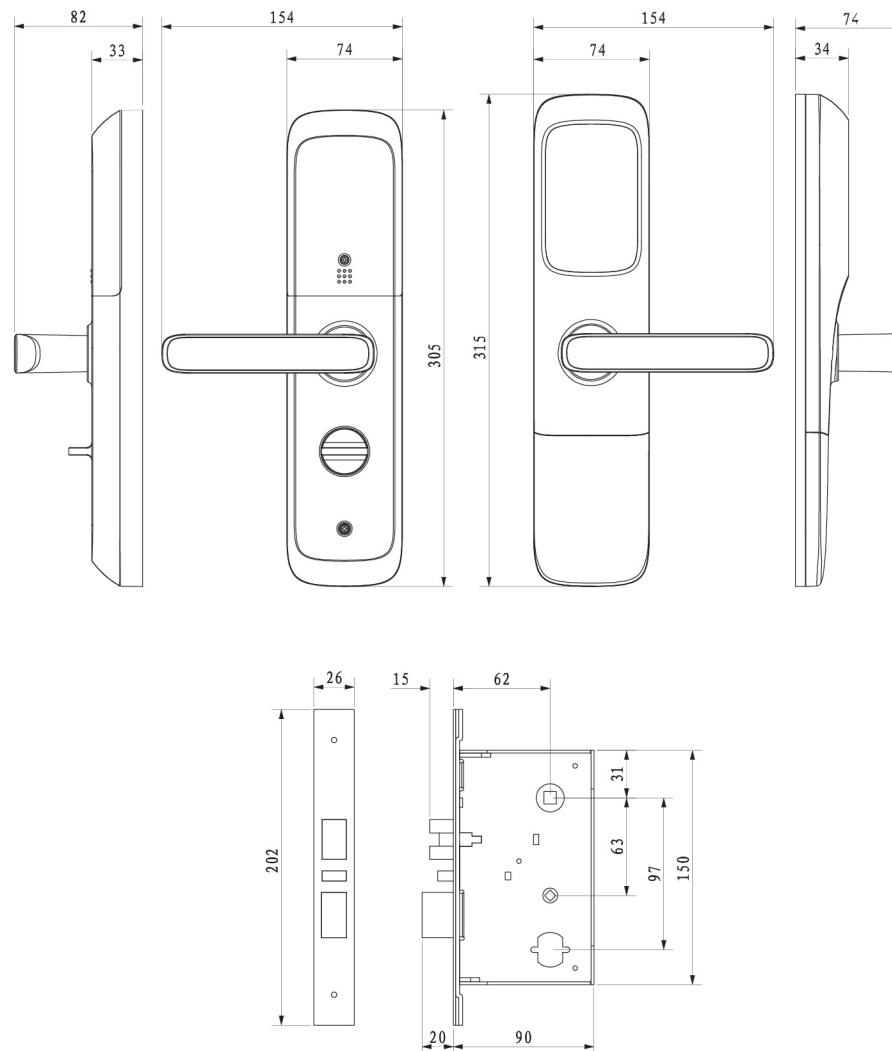
## 产品规格

### 产品参数

项目	参数
使用卡类型	Mifare 1
卡片特点	非接触、安全性高、可做一卡通
感应距离	< 20mm
感应时间	< 0.5s
存卡容量	50张
键盘类型	全触摸按键
密码长度	6-12位
存密容量	50组
防窥密码	开门时密码前后可以随意加入数字
工作电压	DC4.5V~6.5V, 4节1.5V“AA”碱性电池。
电池寿命	约1年(10次/D)
低压报警	< DC4.5V
应急电源	9V干电池
自动锁定	连续3次错误密码或连续5次错误卡片, 锁定系统3分钟。
门状态显示	假锁状态, 反锁状态, 通道模式
锁体	美标
适用门厚	木门40-55mm
定位尺寸	门边距62mm, 中心距97mm
产品标准	国标 GA374-2001(电子防盗锁)
使用温度	-30~+70℃
相对湿度	10%~93%
恢复出厂设置	支持
系统复位	支持
门铃功能	支持
内置蜂鸣器	支持
内置扬声器	支持

## 产品规格

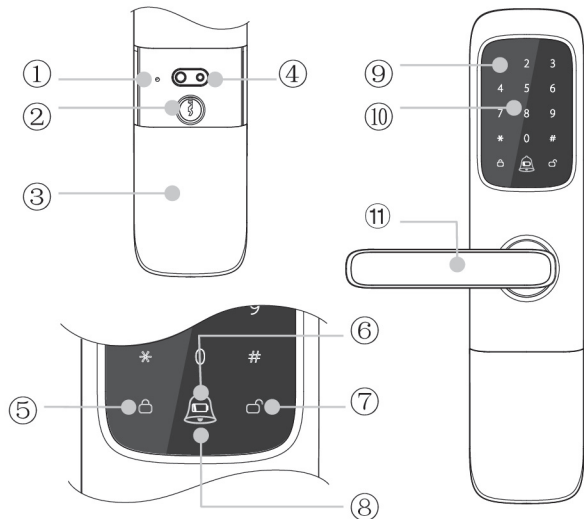
### 产品尺寸



## 专业名词

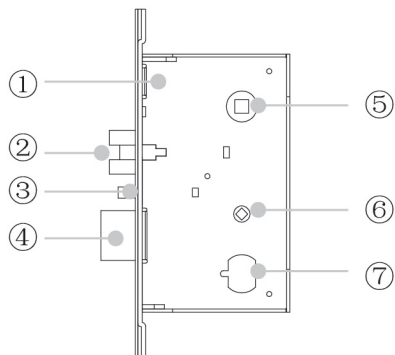
### 外面板（室外）

①	重启键
②	机械钥匙锁芯
③	应急滑盖
④	应急电源接口
⑤	闭锁状态指示灯
⑥	低电压指示灯
⑦	开启状态指示灯
⑧	门铃按键
⑨	触摸键盘
⑩	刷卡中心位
⑪	执手



### 锁体

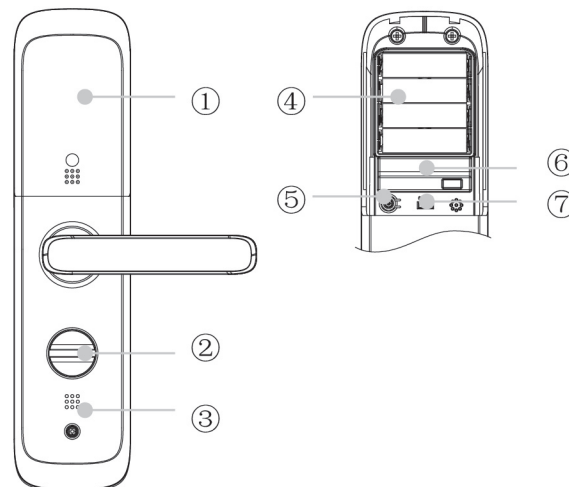
①	锁体
②	斜舌
③	保险舌
④	方舌
⑤	执手孔
⑥	旋钮孔
⑦	锁芯安装孔



## 专业名词

### 内面板（室内）

①	电池盖
②	方舌旋钮
③	扬声器
④	电池盒
⑤	功能键
⑥	串口仓
⑦	音量开关



壳体表面采用高温粉体保护，耐盐雾实验可到200h，所以不用在意手心是否有汗，但是表面粘附脏污物体建议及时擦拭以免造成外观不必要的损伤，擦拭时不可使用有机类溶剂。

触摸面板清洁时不可以使用百洁布、清洁球等具有打磨性质的材料，否则将会造成外观损伤。

## 电池更换

### 电池规格

使用须知

**!** 注意：为了发挥产品的最好性能建议使用如下黑体内容的电池型号。

类别	IEC	中国	日本	美国
碳性锌锰电池	R20	1号电池	UM-1	D
	R14	2号电池	UM-2	C
	R6	5号电池	UM-3	AA
	R03	7号电池	UM-4	AAA
碱性锌锰电池	LR20	1号碱性电池	AM-1	D
	LR14	2号碱性电池	AM-2	C
	<b>LR6</b>	<b>5号碱性电池</b>	<b>AM-3</b>	<b>AA</b>
	LR03	7号碱性电池	AM-4	AAA

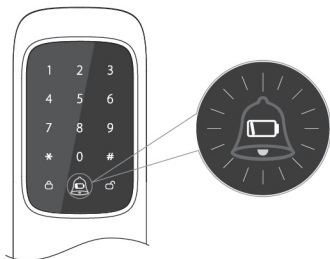


**✍** 电池厂家、生产日期、使用环境不同，电量使用期限也会有所不同，AA碱性电池4节每天按使用约10次为基准，电池电量可以使用约一年。

### 更换步骤

#### ① 电池更换的提示内容：

使用密码或者卡片开门时，如右图欠电符号红色闪烁，同时听到“请及时更换电池”的语音提示，这时需要尽快更换电池，否则将会影响正常使用。

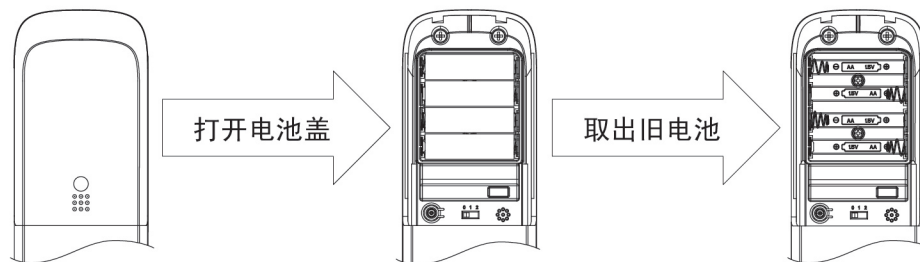


## 电池更换

### 更换步骤

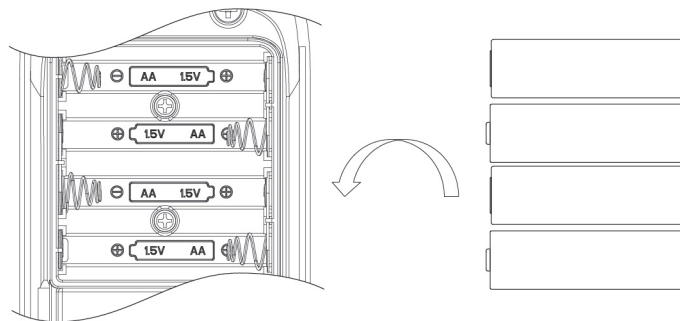
使用须知

#### ② 取出电池：



#### ③ 安装电池：

电池仓里有标注电池的正负极朝向，如下图所示，将电池确认好方向再装入电池仓。



- !** 电池朝向务必要正确，否则无法正常使用。
- 电池正确安装后触摸键盘会自动唤醒，这时表明新安装电池已经成功上电。
- 电池漏液可能导致产品故障，请定期确认（约6个月确认一次）。
- 欠电提示后，电池更换之前，密码、卡片登记、删除等设定无法使用。
- 电池更换不会造成数据丢失。
- 更换下来的电池请投到指定的回收桶。

## 应急电池

### 使用方法

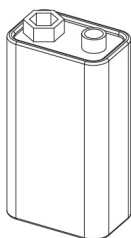
使用须知


#### ① 电池电量不足，无法打开门锁

使用密码或者卡片开门时，如果遇到把手下压异常，那么可以认为是电量不够。

#### ② 购买9V电源

到附近小店或者超市购买如右图所示的9V电池。



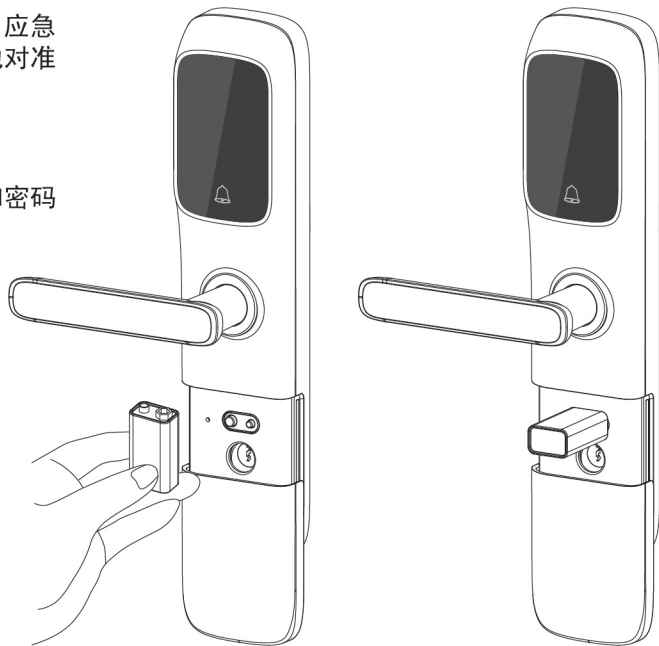
 请使用碱性电池

#### ③ 插上电池

打开应急滑盖，露出应急电源接口，将9V电池对准正负极扣入。

#### ④ 开锁

使用已登记的卡片和密码进行开锁。



## 音量设置

### 音量设置

#### ① 打开电池盖，找到拨动开关。

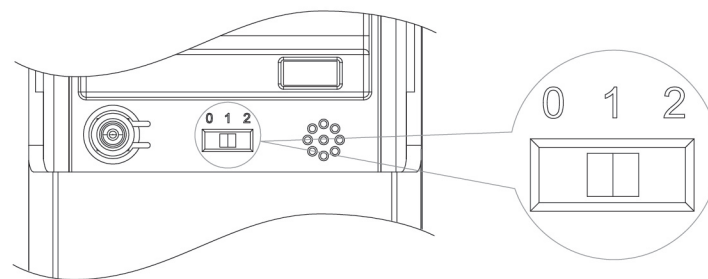
#### ② 档位介绍


如下图开关分为三档，区分如下：

【0】档：无声。

【1】档：音量小。

【2】档：音量大。



 【0】档：关门和开门时无提示音（除警号音和设置音以外）。

【1】档：提示音音量较小，小于设置音，出厂默认为此档。

【2】档：提示音音量较大，与设置音相同。

各种设置



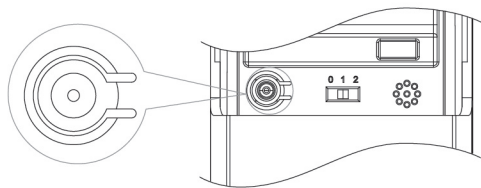
## 登记模式

### 名称解释

平常开门用的卡钥、密钥需要通过登记模式存入系统数据库；另外管理员密码的修改，卡钥、密钥的删除均需要进入登记模式才能完成。

### 操作方法

- ① 打开电池盖，短按功能键。功能键位置如右图所示，短按提示输入管理员密码。

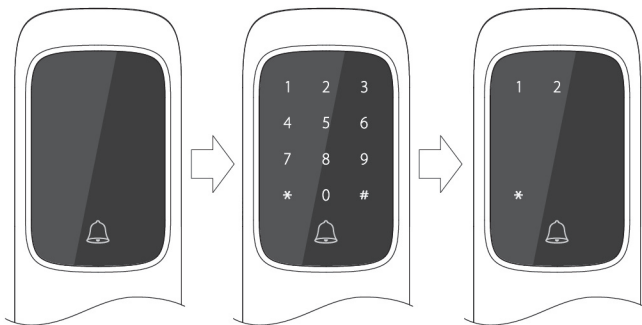


⚠ 出厂默认管理员密码为“123456”。

- ② 输入管理员密码。

进入登记模式后，触摸板如下图，由暗转为点亮数字键。此时可输入管理员密码后按#号结束，这时进入登记状态。

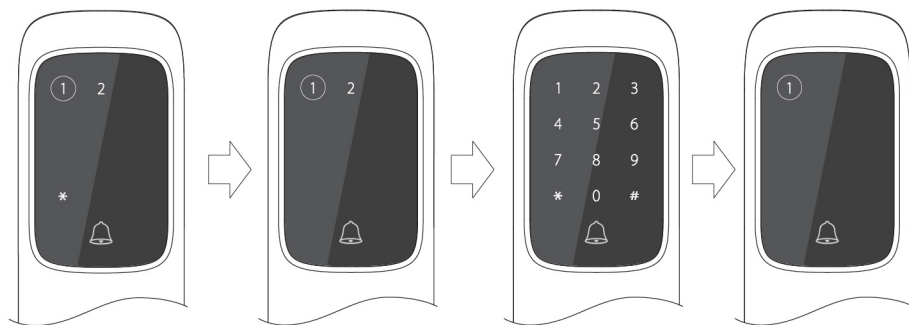
✎ ■ 管理员密码输入错误时，会有错误提示，同时出于环保节能考虑，系统进入休眠，请重新按登记键再进入设置模式。  
■ 输入正确的管理员密码后，进入下一级，触摸面板如右图第三幅所示。



## 登记密码

### 设置步骤

- ① 进入登记状态。
- ② 按语言提示按【1】，再按【1】。如下图第三张所示，键盘会全部点亮。



- ③ 输入要登记的密码。

输入6-12位密码后按【#】结束，再次输入相同密码按【#】进行二次确认。成功登记后，提示“继续请按【1】，结束请按登记键”，此时触摸板如上图第四张，按1后步骤同上，按登记键后退出登记模式，进入休眠。

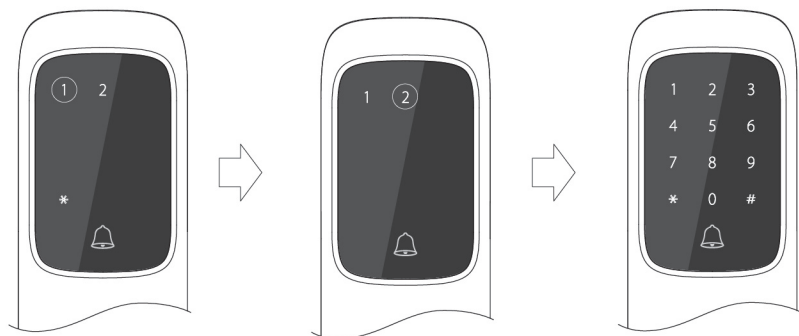
⚠ ■ 为了安全，普通密码位数设定为6-12位。  
■ 密码由数字组成，不可含符号。

✎ ■ 密码输入小于6位或者大于12位时，会提示输入错误，重新输入6-12位密码即可。  
■ 二次确认输入的密码不正确时，会提示两次输入不一致，重新输入正确的密码即可。  
■ 如果忘记了第一次输入的密码，建议按登记键结束登记后重新再设置。  
■ 密码登记容量为50组，超过会提示“已超限，登记失败”。

## 更改管理员密码

### 设置步骤

- ① 进入登记状态。
- ② 按语言提示按【1】，再按【2】。  
如下图所示，键盘会全部点亮。



- ③ 输入新管理员密码。  
输入6位管理员密码后按【#】结束，再次输入相同密码按【#】进行二次确认。

! ■ 管理员密码非常重要，他是进入登记模式的唯一身份验证，以及其它设置的唯一准入条件。所以务必请妥善保管，切勿遗忘或者告知他人。

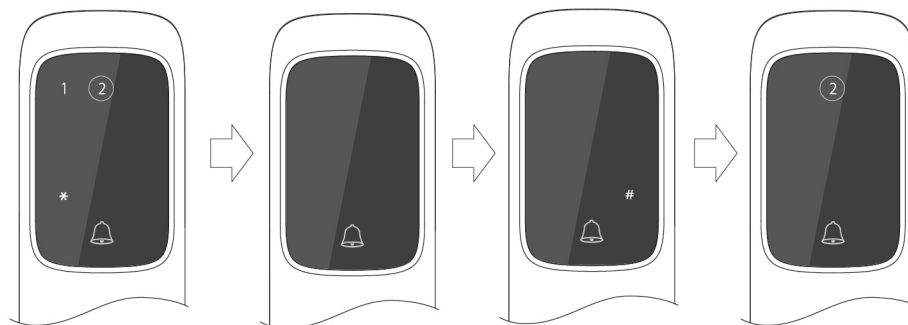
! ■ 为了便于记忆，管理员密码位数设定为6位。  
■ 密码由数字组成，不可含符号。

✎ ■ 密码输入小于或者大于6位时，会提示输入错误，重新输入6-12位密码即可。  
■ 二次确认输入的密码不正确时，会提示两次输入不一致，重新输入正确的密码即可。  
■ 如果忘记了第一次输入的密码，建议按登记键结束登记后重新再设置。

## 登记卡片

### 设置步骤

- ① 进入登记状态。
- ② 按语言提示按【2】。  
按2后，键盘全灭，同时语言提示“卡登记状态，请分别接触要登记的卡后按【#】”。



- ③ 接触要登记的卡。  
将卡片贴近触摸板，并尽量中心对齐，当听到“嘀”时，说明已经读取卡片，此时如上图第三张会点亮【#】，接下来继续接触其他新卡，全部录入后按【#】保存数据，此时按【2】可以继续登记，按登记键退出登记，进入休眠。

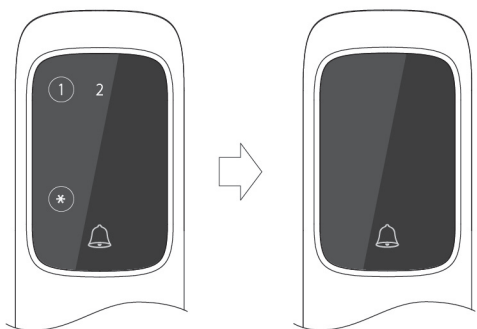
! ■ 登记的卡片为开门电子钥匙，务必妥善保管，意外遗失后建议马上删除已登记的卡片。

✎ ■ 卡片分为很多种类，我们所使用的是Philips公司开发的Mifare卡，俗称非接触式感应卡。小区或者公司所使用的门禁或者考勤卡大部分也是Mifare卡，可以无缝使用。  
■ 卡片重复登记会提示“已登记的卡”，此时不影响正常操作。  
■ 如果卡片非Mifare卡，或者卡片断裂，登记时会提示“无效，请确认卡片”，此时不影响正常操作。  
■ 卡片登记容量为50张，超限，会提示登记失败，同时系统进入休眠。

## 删除密码

### 设置步骤

- ① 进入登记状态。
- ② 按语言提示按【\*】、【1】。  
此时语言提示“正在删除，请稍后。”“密码已全部删除”，继而系统进入休眠。



■ 管理员密码具备管理权限，所以只能更改，无法删除。此删除密码功能只删除了全部普通密码。

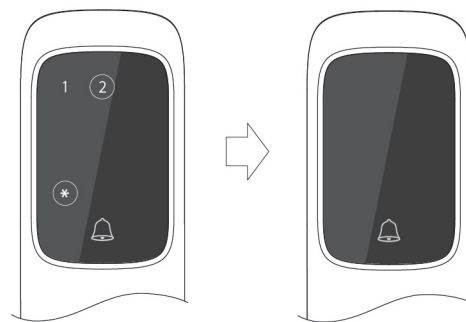
■ 密码删除后将无法恢复，只能重新登记，如果误触了【\*】，建议按登记键退出设置，此时不会删除密码。

■ 密码登记容量为50组，当多次密码忘记时，建议删除全部密码重新登记，以免数量超限。

## 删除卡片

### 设置步骤

- ① 进入登记状态。
- ② 按语言提示按【\*】、【2】。  
此时语言提示“正在删除，请稍后。”“卡片已全部删除”，继而系统进入休眠。



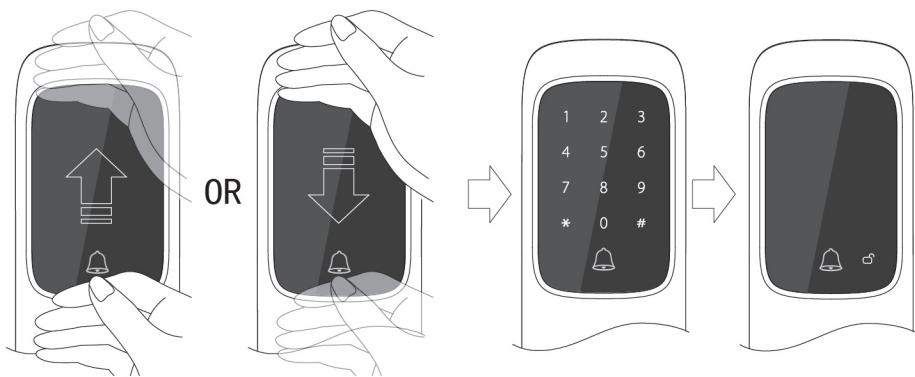
■ 卡片删除后将无法恢复，只能重新登记，如果误触了【\*】，建议按登记键退出设置，此时不会删除卡片。  
■ 登记的卡片可以直接开门，当遗失卡片时，建议马上删除全部卡片重新登记，以免造成不必要的经济损失

# 密码开门

## 普通密码开门

### ① 触摸唤醒键盘。

键盘唤醒方式为多点触碰唤醒。按照人机工程学，建议如下方式唤醒，其使用体验更佳。



■滑动的手势保持顺畅即可，听到唤醒声或者看到键盘点亮，手即可离开触摸板。

### ② 输入已登记的密码。

输入密码按【#】确认，此时见上图第四张，右下角开锁符号蓝色呼吸一次。

■本产品具备防窥密码功能，在已登记的密码前面或者后面输入任意数字键，同样可以达到开门的目的。此设计在有旁人在场的情况下非常受用。

注意：系统具备保安功能，连续3次密码输入错误，设备系统强制锁定3分钟。3分钟后自动解除锁定；如果门内有人，可以下压内把手解除锁定；也可以长按登记键3s解除锁定。

# 密码开门

## 普通密码开门

### ③ 下压把手打开门锁。

听到语言提示“下压把手开启”，或者听到锁体细微的机械转动声时下压把手打开门锁。

■如遇到无法正常开门，且有符号提示时见【常见符号】说明页判断具体故障原因。

## 管理员密码开门

### ① 唤醒键盘。

唤醒方式见密码开门说明页。

### ② 输入已登记的密码。

提示“内部强制锁定状态”，这时说明方舌处于打出的状态，安全性较高，这种状态普通密码和卡片均无法打开门锁。

### ③ 输入管理员密码。

输入密码按【#】确认，右下角开锁符号蓝色呼吸一次，成功开锁。

注意：为了应急以及安全考虑，管理员密码可以开反锁，所以务必请妥善保管，切勿遗忘或者告知他人。

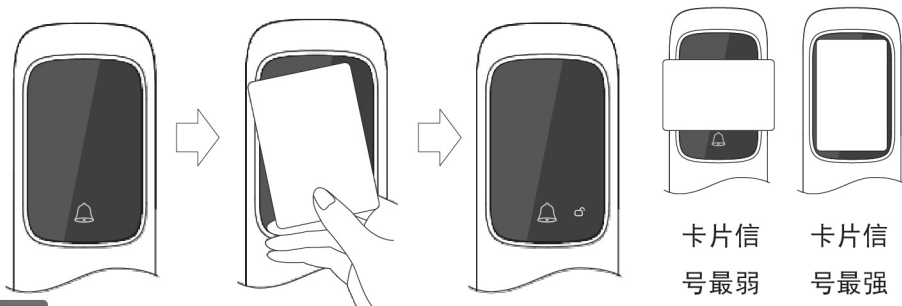
### ④ 下压把手打开门锁。

听到语言提示“下压把手开启”，或者听到锁体细微的机械转动声时下压把手打开门锁。

## 卡片开门

### 操作步骤

- ① 将卡片贴近触摸面板。  
在靠近的过程中会有“嘀”一声，同时会有语言提示。



■ 卡片放置角度不同，其读卡灵敏度也有所不同，建议以上图第四张角度为准。

■ 未登记的卡片会提示“无效”。

■ 刷卡后“嘀”一声，说明已经读到卡数据，此时如果无法开门，请确认是否存在电池电量不够的可能性。

■ 如果卡片断裂将不能再使用，如果不删除已登记的卡片，那么建议将废卡剪碎后再丢弃，另外建议及时登记新卡片。

**注意：**系统具备保安功能，连续刷5次无效卡，设备系统强制锁定3分钟。3分钟后自动解除锁定；如果门内有人，可以下压内把手解除锁定；也可以长按登记键3s解除锁定。

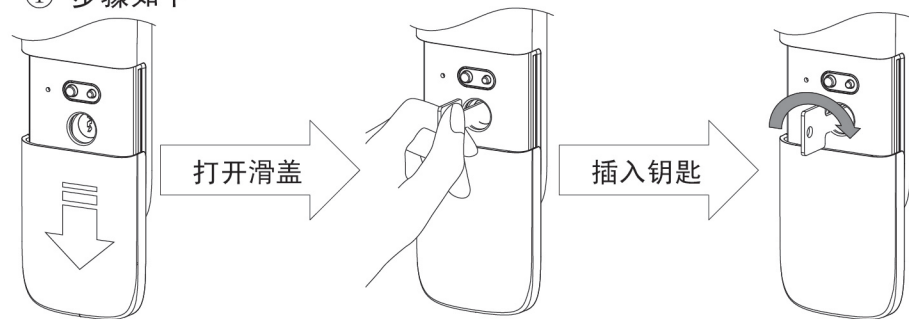
- ② 下压把手打开门锁。  
听到语言提示“请开启”，或者听到锁体细微的机械转动声时下压把手打开门锁。

■ 如遇到无法正常开门，且有符号提示时见【常见符号】说明页判断具体故障原因。

## 机械钥匙开门

### 操作步骤

- ① 步骤如下



■ 锁芯具备报警功能，当旋转钥匙时会触发报警，这时不用紧张，可以打开电池盖长按登记键3s可以消警，如果有需要，有效卡片和密码也能消警。

■ 钥匙的旋转方向和安装方向有关，请按右图方式判断实际旋转方向。

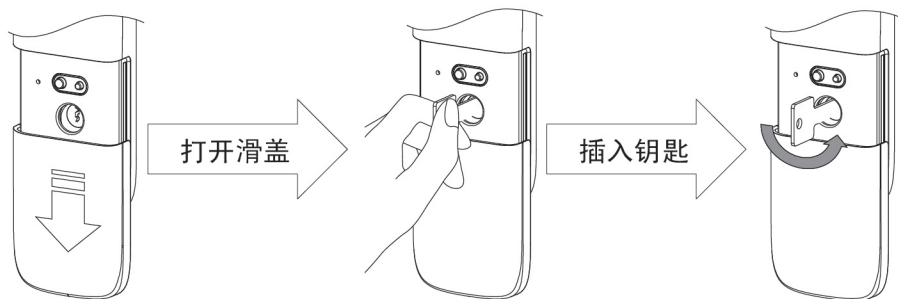
- ② 开门  
钥匙顺时针旋转到底，不能再转动时保持手势不动，拉开或者推开门即可。

■ 钥匙只要回正拔出即可。

## 关门上锁

### 门外反锁

① 步骤如下

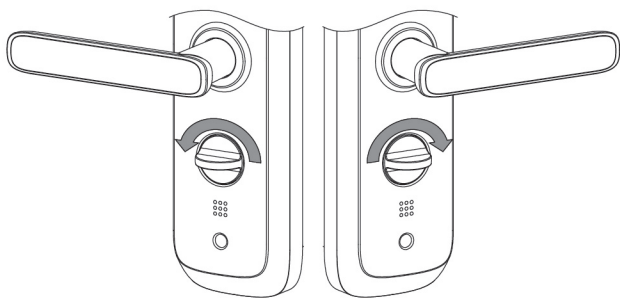


- 钥匙旋到底后，回正钥匙拔出即可。
- 钥匙的旋转方向和开门时正好相反，如不清楚可以看前一页图示。

基本操作

### 门内反锁

① 旋钮反锁。  
旋钮的旋转同样可以实现方舌的打出，旋转方向参考右图。



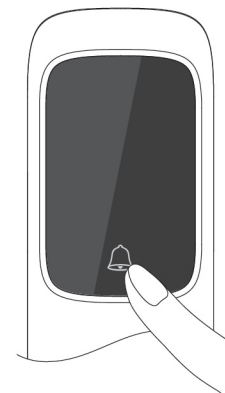
- 门锁一旦反锁后，只能用管理员密码开门，其他电子钥匙均受限。

## 门铃使用

### 操作步骤

① 用手指直接触摸门铃图标。

- 触摸面板处于唤醒状态直接轻触一下就有效。
- 触摸面板处于休眠时需长按门铃键1s有效。



### 通道模式

#### 名称解释

就像“通道”的概念，门锁的把手一直处于有效的状态，每一次的下压均能够开启门锁。

- 家庭环境下，聚会时人员进进出出比较多，如果都要用电子钥匙就比较麻烦，建议使用通道模式。
- 办公环境下，如果要方便员工、下属进出时，建议使用通道模式。

附加功能

## 通道模式

### 设置步骤

① 唤醒键盘。

唤醒方式见密码开门说明。

② 长按【#】3s。

3s后会听到“嘀”一声，并有语言提示“请输入管理员密码后，按#开启通道模式”。

③ 输入管理员密码。

输入密码按【#】确认，语言提示“已开启通道模式”。

### 退出通道

① 唤醒键盘。

② 长按【#】3s。

3s后会听到“嘀”一声，并有语言提示“请输入管理员密码后，按#关闭通道模式”。

③ 输入管理员密码。

输入密码按【#】确认，语言提示“已关闭通道模式”。

 注意：通道模式下门铃可以正常使用，但免扰模式下门铃是禁用的。

## 免扰模式

### 名称解释

就像“免扰”的概念，已登记的普通密码和卡片均受到开门限制，从而达到免受打扰的需求。



■ 家庭环境下，如果想要清净等情况下，建议使用免扰模式。

■ 办公环境下，如果需要谈论商务上较机密的内容，或者下班时避免有人未经许可进入办公室等情况下，建议使用免扰模式。

### 设置步骤

① 唤醒键盘。

② 长按【\*】3s。

3s后会听到“嘀”一声，并有语言提示“请输入管理员密码后，按#开启免扰模式”。

③ 输入管理员密码。

输入密码按【#】确认，语言提示“已开启免扰模式”。

### 退出免扰

① 唤醒键盘。

② 长按【\*】3s。

3s后会听到“嘀”一声，并有语言提示“请输入管理员密码后，按#关闭免扰模式”。

③ 输入管理员密码。

输入密码按【#】确认，语言提示“已关闭免扰模式”。

## 取消报警

### 锁芯报警

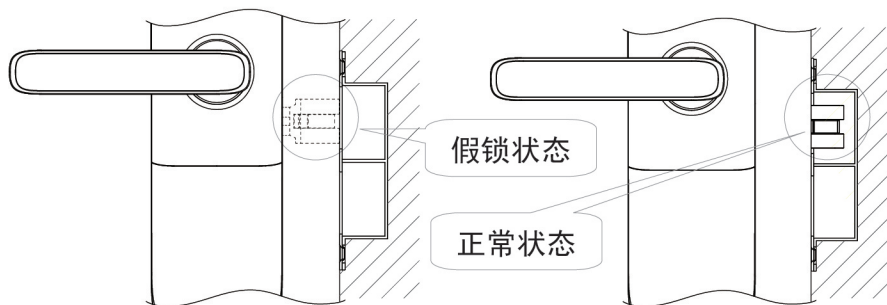
■ 为了避免有人恶意从锁芯处技术开启门锁，所以特别设计了锁芯报警功能。  
■ 报警音为连续快频的“嘀”。

■ 打开电池盖长按登记键3s可以消警。  
■ 刷有效卡片能消警。  
■ 输入有效密码能消警。

### 假锁报警

■ 为了避免门虚掩而造成不必要的损失，门锁特别设计了假锁报警。  
■ 报警音为连续15s快频的“嘀”。

■ 关紧门弹出斜舌就可以消警。  
■ 将门打开同样可以消警。



## 常见符号

### 符号说明

	状态	一直显示	■ 长按1s可以响起门铃。 ■ 免扰模式下，门铃无效。
	状态	蓝色	■ 有效开启门锁。
		红色	■ 门假锁报警，闭紧门弹出反锁即可。 ■ 锁芯报警，长按登记键3s，或者参考P30。
	状态	红色	■ 反锁状态，管理员密码开锁，或者从内部打开。
	状态	红色	■ 电池电量不够，及时更换电池。
	状态	蓝色	■ 登记模式下，要删除已保存的电子钥匙，需要先按【*】，再按对应的提示数字。 ■ 密码输入状态下，【*】不具备删除功能。 ■ 非登记模式下，长按【*】3s可以进入免扰模式设置。
	状态	蓝色	■ 登记模式下，要按【#】确认登记动作。 ■ 密码输入状态下，按【#】确认输入。 ■ 非登记模式下，长按【#】3s可以进入通道模式设置。



## 常见问题

产品不能正常工作时，请先确认以下事项。  
如果问题不能解决的情况下，请拨打服务热线。

### 电源

问题	设备无电状态	解决	<ul style="list-style-type: none"> <li>■请确认是否电池品质太差。</li> <li>■请确认电池极性是否装反。</li> <li>■请确认电池是否完全没电。</li> </ul>	参考	P42-P43
----	--------	----	---	----	---------

### 密码/卡片

问题	无响应	解决	<ul style="list-style-type: none"> <li>■打开应急滑盖，用工具轻触复位键，系统会被重新唤醒，键盘灯点亮。</li> </ul>	参考	P40
	密码无法登记	解决	<ul style="list-style-type: none"> <li>■请确认是否存在操作超时。</li> <li>■请确认电池是否有电。</li> <li>■请再次确认密码登记的操作说明。</li> </ul>	参考	P47-P48
	密码输入无法开门	解决	<ul style="list-style-type: none"> <li>■请确认是否输入正确的密码。</li> <li>■请确认结束时是否有按【#】。</li> <li>■请确认设备是否处于免扰模式。</li> </ul>	参考	P52-P53 P59
	卡片无法登记	解决	<ul style="list-style-type: none"> <li>■请确认卡片类型是否正确。</li> <li>■请确认卡片是否通过正规渠道购得。</li> </ul>	参考	P49
	刷卡无法开门	解决	<ul style="list-style-type: none"> <li>■请确认卡片是否正确。</li> <li>■请确认设备是否有电。</li> <li>■请确认卡片是否在有效距离内。</li> <li>■请确认是否是否处于免扰模式。</li> </ul>	参考	P54 P47 P38 P59
	刷卡有效，开门异常	解决	<ul style="list-style-type: none"> <li>■产品存在安装错位、锁体机械异常的可能，请联系客服。</li> </ul>	参考	-

## 维修事宜

产品保修期内的产品本身的质量问题享受无偿维修。  
如果因为使用不当造成损坏或者超过保修期，将需要有偿维修。



注意：产品保修期为购买之日起一年。

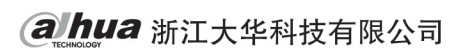
状态	故障类型	保修期内	保修期外
正常使用	购买安装后12个月内出现故障	免费维修	有偿维修
	出现同样故障2次	免费维修	有偿维修
	出现同样故障3次	更换产品	有偿维修
	无修理用部件	更换产品	有偿维修
非正常使用	过失造成故障和损坏	有偿维修	有偿维修
	电池等消耗品更换	有偿维修	有偿维修
	产品原使用目的外造成的故障和损坏	有偿维修	有偿维修
	自行拆除引起的故障和损坏	有偿维修	有偿维修
	丢失管理员密码时的拆装	有偿维修	有偿维修
意外灾害（火灾、水灾等）		有偿维修	有偿维修

### 保修卡

产品序号		购买日期		产品型号	
客户姓名		通讯地址			
电话号码		销售地点			



没有产品保修卡视为有偿服务，所以请务必保管好此卡。



---

地址：浙江省杭州市滨江区滨安路1199号

邮政编码：310053

客服热线：400 6728 166

公司网址：[www.dahuatech.com](http://www.dahuatech.com)

联系我们：[www.dahuatech.com/content.aspx](http://www.dahuatech.com/content.aspx)