

DSS Platform Initialization User's Manual

V1.2.0

Table of Contents

1	INSTALLATION AND CONNECTIONS	1
1.1	Check Unpacked Device	1
1.2	Front Panel	1
1.3	Rear Panel.....	2
2	INITIALIZATION SETUP	4
2.1	System Time and IP Address	4
2.2	Master/Slave Mode and Disk Storage.....	5
2.2.1	Master mode.....	8
2.2.2	Slave mode.....	11

Welcome

Thank you for using our platform!

This initialization user's manual is designed to be a reference tool for the installation and operation of your system.

Before installation and operation please read the following safeguards and warnings carefully!

Please keep it for future reference!

Important Safeguards and Warnings

1 . Electrical safety

All installation and operation here should conform to your local electrical safety codes. We assume no liability or responsibility for all the fires or electrical shock caused by improper handling or installation.

2 . Transportation security

Heavy stress, violent vibration or water splash are not allowed during transportation, storage and installation.

3 . Installation

Keep upwards. Handle with care.

Do not apply power to the device before completing installation.

Do not place objects on the device.

4 . Qualified engineers needed

All the examination and repair work should be done by the qualified service engineers.

We are not liable for any problems caused by unauthorized modifications or attempted repair.

5 . Environment

The device should be installed in a cool, dry place away from direct sunlight, inflammable, explosive substances and etc.

This series product shall be transported, storage and used in the specified environments.

6. Lithium battery

Improper battery use may result in fire, explosion, or personal injury!

When replace the battery, please make sure you are using the same model!

7. Accessories

Be sure to use all the accessories recommended by manufacturer.

Before installation, please open the package and check all the components are included.

Contact your local retailer ASAP if something is broken in your package.

1 Installation and Connections

Note: All the installation and operations here should conform to your local electric safety rules.

1.1 Check Unpacked Device

When you receive the device from the forwarding agent, please check whether there is any visible damage. The protective materials used for the package of the device can protect most accidental clashes during transportation. Then you can open the box to check the accessories. Please check the items in accordance with the list. Finally you can remove the protective film of the device.

1.2 Front Panel

The front panel is shown as below. See Figure 1-1.

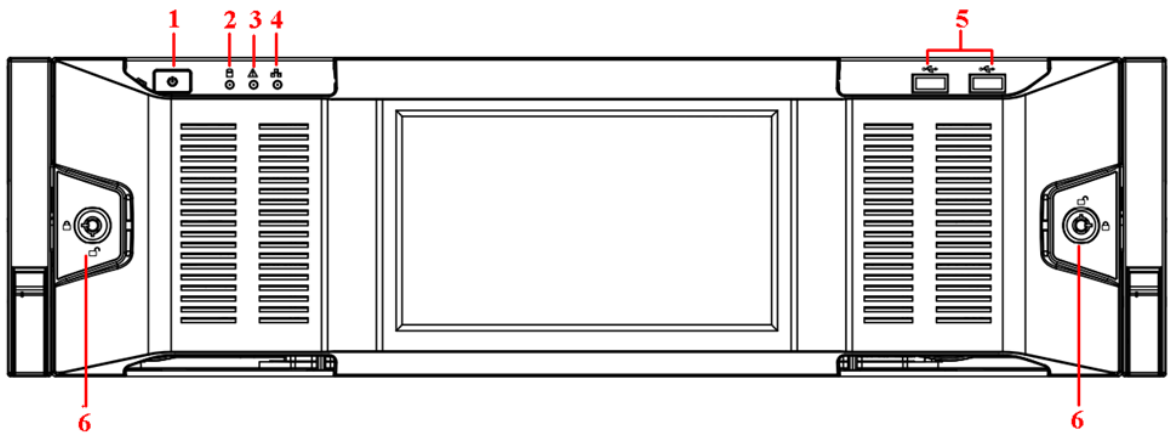


Figure 1-1

Please refer to the following sheet for front panel button information.

SN	Name	Function
1	Power button	Press it once to turn on the device. Press it for a long time to turn off the device. (Usually we do not recommend) . Press power button for a long time or pull out the power cable may result in device auto restart.
2	System HDD Indicator light	The blue light flashes when system is reading or writing the system HDD. In the system HDD, there are device important configuration file, factory default configuration file, and device initial boot up data.
3	Alarm Indicator light	The alarm Indicator light becomes on once an alarm occurred. It becomes on via the software detection. The alarm includes local alarm, no disk and etc.
4	Network Indicator light	The network Indicator light is blue and it flashes when you connect the device to the network.
5	USB port	/

6	Front panel lock	/
---	------------------	---

After you remove the front panel, you can see there are 16 HDDs. From the left to the right and from the top to the bottom, it ranges from 1~4, 5~8, 9~12, 13~16. See Figure 1-2. Please make sure the system disk is at the disk No.1.

You can see there are two indication lights on the HDD bracket.

- The power indicator light is at the top. The light is yellow after you connected the device to the power.
- The read-write indicator light is at the bottom. The blue light flashes when system is reading or writing the data.

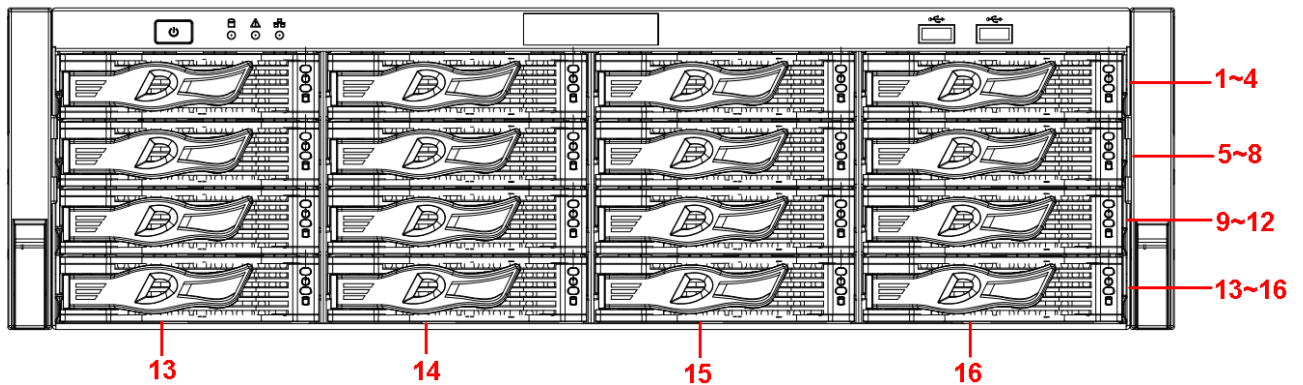


Figure 1-2

1.3 Rear Panel

The rear panel is shown as in Figure 1-3.

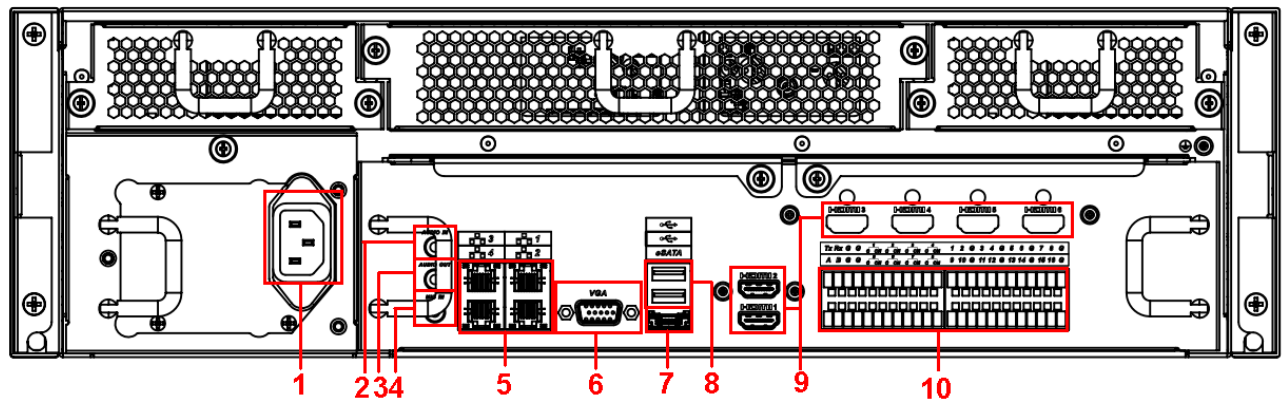


Figure 1-3

Please refer to the following sheet for rear panel button information.

SN	Function	SN	Function
1	Power socket	6	Video VGA output
2	Audio Input	7	eSATA port
3	Audio output	8	USB port
4	Bidirectional talk input	9	HDMI port

5	Network port	10	Alarm input, alarm output, RS485 port.
---	--------------	----	--

2 Initialization Setup

Before you use the platform, please follow the steps listed below to set the initialization information.

2.1 System Time and IP Address

Before you use the platform, please set system time, IP address and etc.

- 1) Take the device out of the package.
- 2) Open the accessories bag and then take out the disk (system disk).
- 3) Install the system disk to the first slot. See Figure 2-1.

Note

- Do not install the storage disk on the first slot.
- We **STRONGLY** recommend the enterprise class disk. We are not liable for any problem (such as data loss) resulting from the HDD instability.
- Please use the HDDs of the same brand and of the same space specifications.



Figure 2-1

- 4) Connect the network cable and power cable. Boot up the device. Now you can see system pops up the startup wizard after it boots up.
- 5) Click Next button, system pops up the General interface. See Figure 2-2.

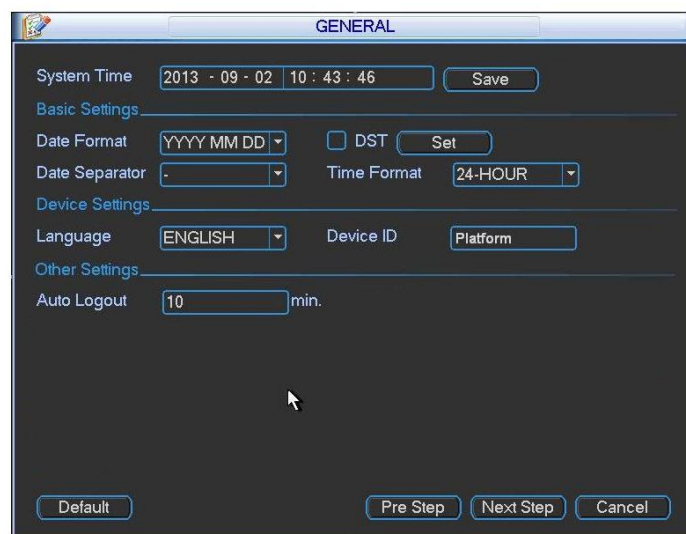


Figure 2-2

- 6) Please set system time and then click **Save** button. Click Next button to continue. System pops up Network interface. See Figure 2-3.

Figure 2-3 shows a network configuration window titled "NETWORK". The window contains the following settings:

- Net Mode: Multi-address
- Network Device Name: Ethernet1
- IP Version: IPv4
- IP Address: 10 . 15 . 5 . 223
- Subnet Mask: 255 . 255 . 0 . 0
- Gateway: 10 . 15 . 0 . 1
- Preferred DNS: 8 . 8 . 8 . 8
- Alternate DNS: 8 . 8 . 4 . 4

There is an unchecked checkbox for "DHCP". At the bottom, there is a "NETWORK SETTING" section with a "Default" button, and a row of three buttons: "Pre Step", "Next Step", and "Cancel".

Figure 2-3

Note

Network mode has three types:

- Load balance: It is called the network adapter binding mode. It can be used when there are high requirements or there is no iSCSI storage plan.
 - Multiple-address: It is the multiple-network adapter mode. It can be used in the iSCSI extension storage plan. The network adapter 1 is for service communication. The network adapter 2 is reserved. The network adapter 3 and 4 is for iSCSI storage.
 - Fault-tolerance: Usually we **do not recommend** this mode.
- 7) Set network mode, IP address and etc. Click Next button to continue. System pops up disk check dialogue box.
- 8) Click Next button to continue, system pops up the format dialogue box.
- 9) Click OK button. The format process may take about 30 minutes. System pops up a dialogue box to restart and then begins boot up again.

Note

When system is restarting or running, do not hot swap the first disk (system disk).

2.2 Master/Slave Mode and Disk Storage

After you set platform system time, IP address and network mode, please access the platform via a PC to set master/slave mode and disk storage setup.

Please follow the steps listed below.

- 1) Download and install Server Assistant.
 - a) Please input the IP address you set in chapter 2.1 on the IE and then click Enter button. System pops up the following dialogue box. See Figure 2-4.

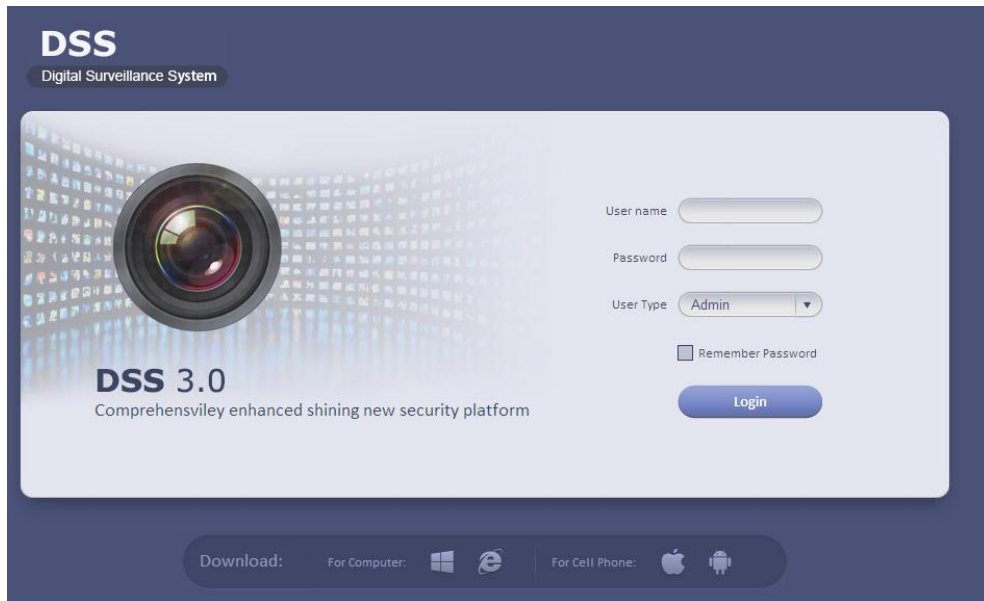


Figure 2-4

- b) Please input user name and password. System default user name is **system** and password is **123456**.
- c) From system->Upload, the interface is shown as below. See Figure 2-5.

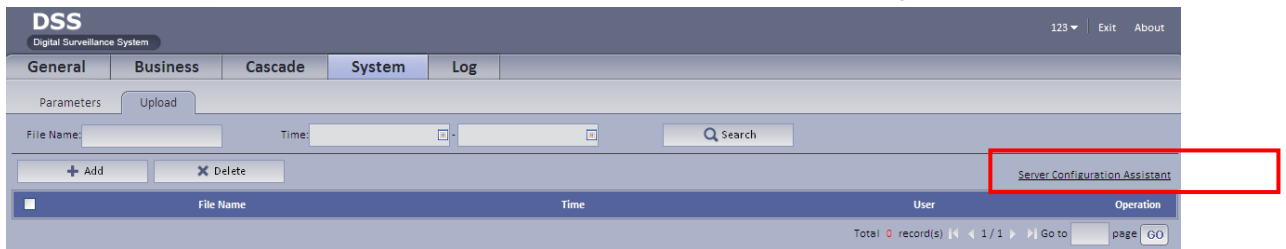


Figure 2-5

- d) Click Server Configuration Assistant button, system pops up file download dialogue box. See Figure 2-6.



Figure 2-6

- e) Click Save button and then select download path.
- f) Unzip the DSSConfig.zip file and ServerAssistant.zip. Now you can install

ServerAssistant.exe.

- 2) After the installation, from Start->All Programs->Server Assistant->Server Assistant. System pops up the following login interface. See Figure 2-7.

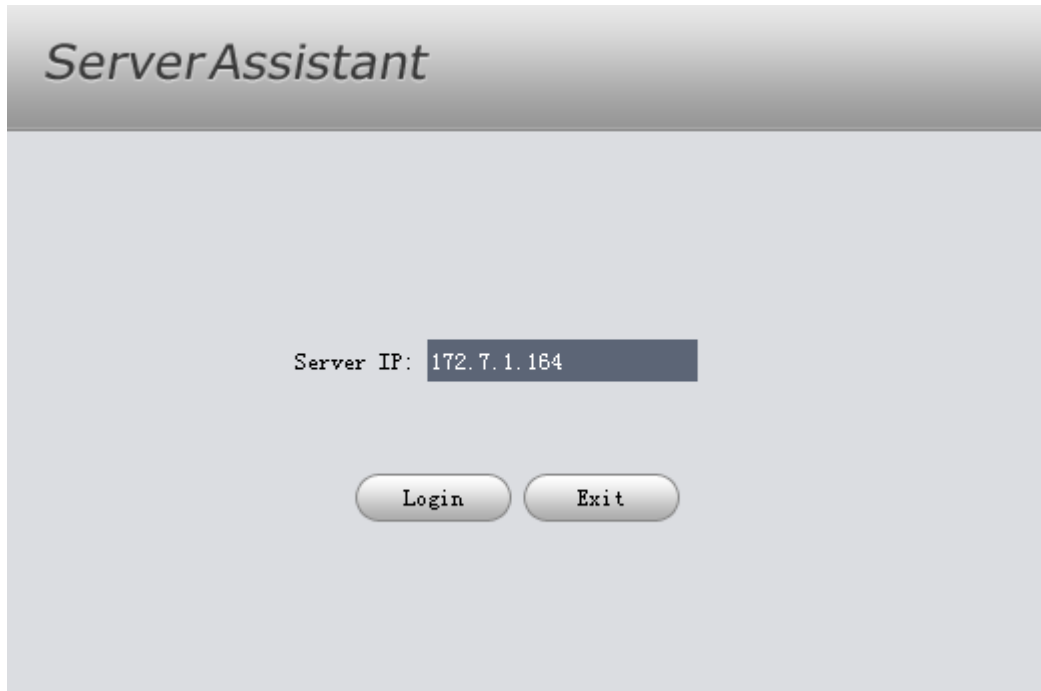


Figure 2-7

- 3) Input server IP you set in chapter 2.1 and then click the Login button. System pops up the main interface. See Figure 2-8.

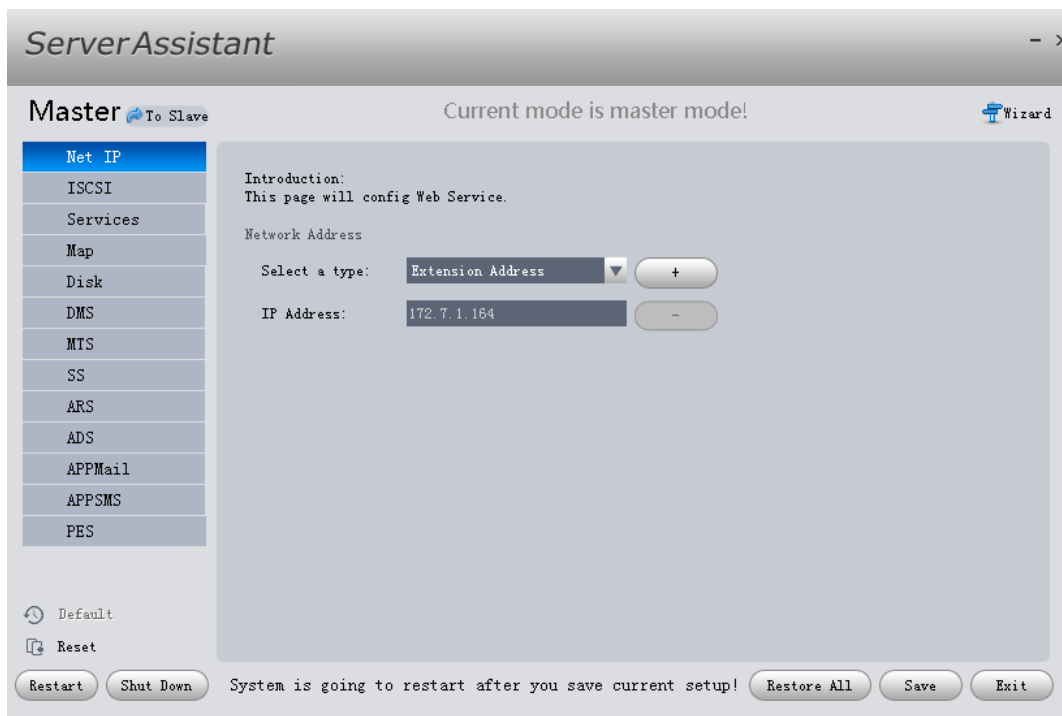


Figure 2-8


- 4) Click  Wizard at the top right corner, system pops up wizard dialogue box. See

Figure 2-9.



Figure 2-9

Note

You can see the following interface if it is the first time to use the tool.

- 5) Click Next button to set Master/Slave mode.

2.2.1 Master mode

- a) Select Mater mode and then click Next button, system pops up disk storage setup interface. See Figure 2-10.



Figure 2-10

- b) On iSCSI interface, input ESS IP address, user name, and password and then click Add button. See Figure 2-11.

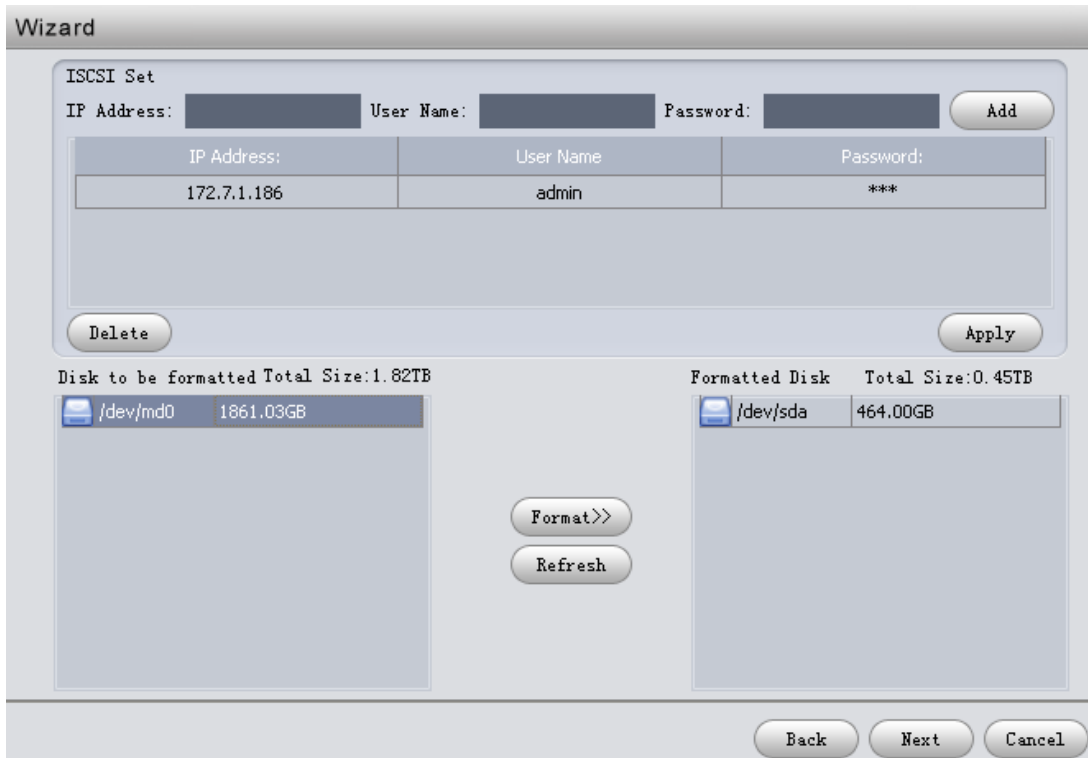


Figure 2-11

- c) Click Apply button. System prompts “Successfully send out”.

Tips

On the Figure 2-8 interface, click the iSCSI on the left pane to set iSCSI information. Click Save button to complete.

- d) Select a disk on the left pane and then click format button. System can format the selected disk and then add it to the list on the right pane.

Tips

On the Figure 2-8 interface, click the Disk on the left pane to set disk information. Click Save button to complete.

- e) Click Next button to continue. System pops up email interface. See Figure 2-12. Please refer to the following sheet for detailed information.

Parameter	Note
Sender	Sender email address.
SMTP Server Address	Email server address.
Listening port	Listening port of the SMTP server. The default setup is 25.
User Name	The user name to login the sender email.
Password	The corresponding password to login the sender email.

Interval	Input interval value.
----------	-----------------------



Figure 2-12

- f) Set the corresponding parameter and then check the Enable button. Click Finish button to complete. You can see the alarm information from the email box after you set alarm scheme, enable email activation operation and set the corresponding email address.
- g) Check SMS. System displays the following interface. See Figure 2-13.

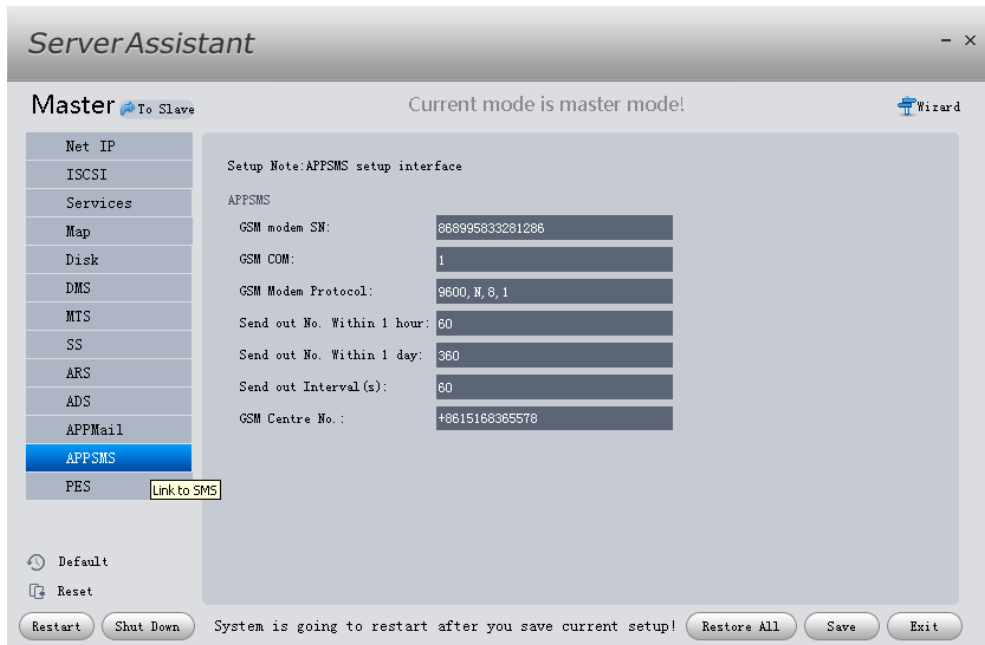


Figure 2-13

- h) Please see the corresponding parameters and then set Apply button.
- i) Click Finish button.
- j) Back to the main interface and then click **Save** button.

2.2.2 Slave mode.

- a) Select Slave mode and then click Next button. See Figure 2-14. System pops up disk storage interface.

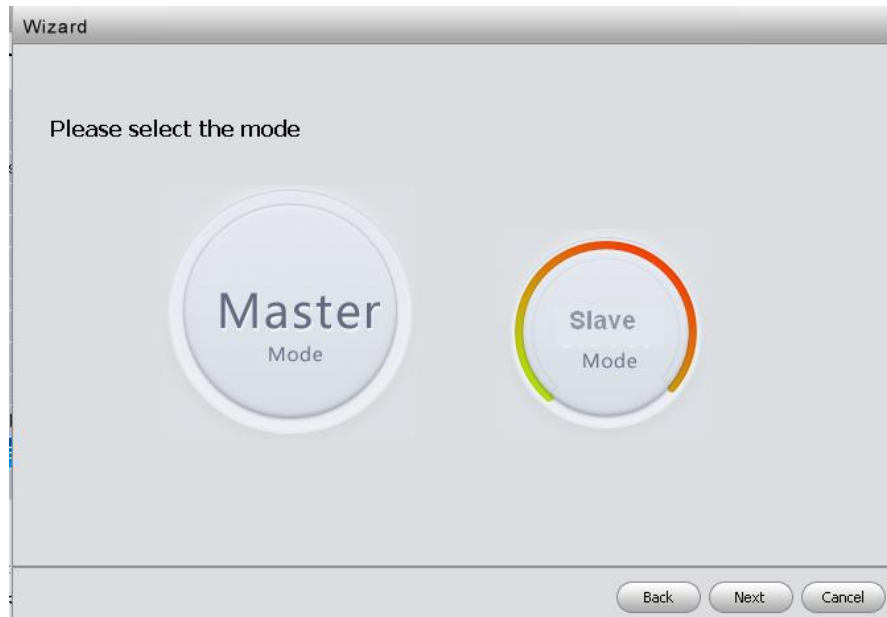


Figure 2-14

- b) Set disk storage information. Please refer to Step b) to Step d) in chapter 2.2.1.
- c) Click Next button to continue. System pops up service setup interface. See Figure 2-15.



Figure 2-15

- d) Set CMS IP address on the master mode at the controller service IP column.
- e) Click Finish button.
- f) Back to the server configuration assistant main interface and then click Save button.

Note

- This user's manual is for reference only. Slight difference may be found in the user interface.
- All the designs and software here are subject to change without prior written notice.
- All trademarks and registered trademarks mentioned are the properties of their respective owners.
- If there is any uncertainty or controversy, please refer to the final explanation of us.
- Please visit our website or contact your local retailer for more information.