



4-Channel Wi-Fi Network Video Recorder

Quick Start Guide

Version 1.0.1

Dahua Technology USA Inc.

Table of Contents

1	Welcome	1
1.1	Important Safeguards and Warnings	1
	Electrical safety	1
	Environmental Precautions	2
	Operation and Daily Maintenance	3
	Warnings	3
1.2	FCC Information	4
	FCC compliance :	4
1.3	Legal Notices	4
	Copyright	4
	Trademarks	4
1.4	Disclaimer	5
2	Unpacking	6
3	NVR	7
3.1	Front Panel	7
3.2	Rear Panel	7
4	Installing the Hard Drive	8
5	NVR Setup	10
5.1	Making Connections	10
5.2	Logging In	10
6	Using Smart Add	11
7	Accessing the NVR via the Web	13

1 Welcome

This manual offers reference material and general information about the basic operation, maintenance, and troubleshooting of the Dahua Wi-Fi Network Video Recorder. Read, follow, and retain the following safety instructions. Heed all warnings on the unit and in the operating instructions before operating the unit. Keep this guide for future reference.

1.1 Important Safeguards and Warnings

Electrical safety

- Install the unit in accordance with the manufacturer's instructions and in accordance with applicable local codes.
- All installation and operation must conform to your local electrical safety codes.
- Do not overload outlets and extension cords, which may cause fire or electrical shock.
- Do not place the camera near or in a place where the camera may contact overhead power lines, power circuits, or electrical lights.
- Ensure power conforms to SELV (Safety Extra Low Voltage) and that the limited power source is rated AC 24V as specified in IEC60950-1. (Power supply requirement is subject to the device label).
- All input/output ports are SELV circuits. Ensure that SELV circuits are connected only to other SELV circuits.
- Ground the unit using the ground connection of the power supply to protect the unit from damage, especially in damp environments.
- Protect the plug and power cord from foot traffic, being pinched, and its exit from the unit.
- Units with or without an ON/OFF switch have power supplied to the unit whenever the power cord is inserted into the power source; however, the unit is operational only when the ON/OFF switch is in the ON position. The power cord is the main power disconnect device for switching off the voltage for all units.
- Operate the unit only from the type of power source indicated on the label. Before proceeding, disconnect the power from the cable to be installed into the unit.
 - For external power supplied units, use only the recommended or approved power supplies.
 - Limited power sources must comply with EN 60950. Substitutions may damage the unit or cause fire or shock.
 - For 24 VAC units, voltage applied to the unit's input power should not exceed $\pm 25\%$. User-supplied wiring must comply with local codes (Class 2 power levels). Do not ground the supply at the terminals or at the unit's power supply terminal.
 - Contact the local dealer or the power company to verify the correct power supply.
- Do not attempt to service the unit. Opening or removing covers may expose you to dangerous voltage or other hazards. Refer all servicing to qualified personnel.

- If the unit is damaged and requires service, unplug the unit from the main power supply and refer to qualified service personnel. Damage may include, but is not limited to:
 - The power supply cord or plug is damaged.
 - Liquid has spilled in or on the unit.
 - An object has fallen on the unit.
 - The unit has been dropped and the housing is damaged.
 - The unit displays a marked change in performance.
 - The unit does not operate in the expected manner when the user correctly follows the proper operating procedures.
- Ensure a service technician uses replacement parts specified by the manufacturer, or that have the same characteristics as the original parts. Unauthorized parts may cause fire, electrical shock, or other hazards. Dahua is not liable for any damage or harm caused by unauthorized modifications or repairs.
- Perform safety checks after completion of service or repairs to the unit.
- Use attachments and accessories only specified by the manufacturer. Any change or modification of the equipment, not expressly approved by Dahua, could void the warranty.
- Incorporate a readily accessible disconnect device in the building installation wiring for quick power disconnect to the unit.
- Dahua assumes no liability or responsibility for any fire or electrical shock caused by improper handling or installation.

Environmental Precautions

- Transport, use, and store the unit within the specified temperature and humidity range.
- Do not place the unit in a wet, dusty, extremely hot or an extremely cold environment; and avoid environments with strong electromagnetic radiation or unstable lighting.
- Never push objects of any kind into this unit through openings as they may touch dangerous voltage points or cause a short circuit that may result in fire or electrical shock. Take care to not spill any liquid on the unit.
- Do not use units intended for indoor applications near water, in damp or wet environments, or in any area classified as a wet location. Do not expose an indoor unit to rain or moisture to reduce the risk of fire or electric shock.
- Do not block or cover any openings in the unit enclosure. These openings are provided for ventilation to prevent overheating and to ensure reliable operation. Ensure the unit is placed in an area with adequate ventilation.
- Do not place the unit near a heat source such as heaters, stoves, radiators or other equipment that produces heat.
- Use the following guidelines if placing the unit in a rack-mount:
 - The ambient temperature of a rack-mount environment may exceed the recommended operating temperature of the unit. Take care to read the ambient temperature before installation.
 - A rack-mount environment may restrict the movement of air. Ensure the unit receives the proper amount of air flow required for safe operation or install the unit elsewhere.
 - A rack mount is capable of supporting a maximum weight. Ensure the rack mount can support the additional weight of this unit.

- A rack mount environment requires proper and adequate circuitry. Ensure the circuits to the rack are capable of handling the electrical requirements of all units in the rack to protect against circuit overloads.
- Pack the unit with standard factory packaging or material of the same quality when transporting the unit.
- Take care to avoid heavy stress, violent vibration, or water spills to the camera unit during transportation, storage, and installation.

Operation and Daily Maintenance

- Do not touch the heat dissipation component of the unit. This part of the unit is hot and may cause a burn.
- Do not open or dismantle the device; there are no components that a user can fix or replace. Opening the unit may cause water leakage or expose components to direct light. Contact the manufacturer or a qualified service representative to service the camera or to replace a component, including the desiccant.
- Dahua recommends the use of a thunder-proof device in concert with the unit.
- Use a dry soft cloth to clean the unit's housing. If the unit is particularly dusty, use water to dilute a mild detergent, apply the diluted detergent to a soft cloth, then gently clean the device. Finally, use a dry cloth to wipe the unit dry. Do not use a volatile solvent like alcohol, benzene, or thinner; or use a strong detergent with abrasives, which may damage the surface coating or reduce the working performance of the unit.

Warnings

- Change the default password after the initial login to protect the integrity of the network.
- Use the standard accessories provided by the manufacturer and ensure the unit is installed and commissioned by qualified professionals.

1.2 FCC Information

This device complies with part 15 of the FCC Rules. Operation is subject to the following two conditions:

- This device may not cause harmful interference;
- This device must accept any interference received, including interference that may cause undesired operation.

FCC compliance :

This equipment has been tested and found to comply with the limits for a digital device, pursuant to part 15 of the FCC Rules. These limits are designed to provide reasonable protection against harmful interference. This equipment generates uses and can radiate radio frequency energy and, if not installed and used in accordance with the instruction manual, may cause harmful interference to radio communication. However, there is no guarantee that interference will not occur in a particular installation. If this equipment does cause harmful interference to radio or television reception, which can be determined by turning the equipment off and on, the user is encouraged to try to correct the interference by one or more of the following measures:

- Reorient or relocate the receiving antenna.
- Increase the separation between the equipment and receiver.
- Connect the equipment into an outlet on a circuit different from that to which the receiver is connected.
- Consult the dealer or an experienced radio/TV technician for help.

1.3 Legal Notices

Copyright

This user guide is ©2016, Dahua Technology Company, LTD.

This user guide is the intellectual property of Dahua Technology Company, LTD and is protected by copyright. All rights reserved.

Trademarks

All hardware and software product names used in this document are likely to be registered trademarks and must be treated accordingly.

1.4 Disclaimer

- This user guide has been compiled with great care and the information it contains has been thoroughly reviewed and verified. The text was complete and correct at the time of printing. This guide may be periodically updated to reflect changes to the product or to correct previous information and the content of this guide can change without notice. If you encounter an error or have any questions regarding the contents of this guide, contact customer service for the latest documentation and supplementary information. Dahua accepts no liability for damage resulting directly or indirectly from faults, incompleteness, or discrepancies between this guide and the product described. Dahua is not liable for any loss caused by installation, operation, or maintenance inconsistent with the information in this guide.
- Video loss is inherent to all digital surveillance and recording devices; therefore Dahua cannot be held liable for any damage that results from missing video information. To minimize the occurrence of lost digital information, Dahua recommends multiple, redundant recording systems, and adoption of backup procedure for all data.
- Contact the supplier or customer service if you encounter any issue while using this unit.

2 Unpacking

This equipment should be unpacked and handled with care. If an item appears to have sustained damage during shipping, notify the shipper immediately.

Verify that all the parts listed below are included. If an item is missing, contact customer support or your local representative.

The original packing carton is the safest container to transport the unit, in the event the unit must be returned for service. Retain the carton and all shipping material for future use.

Please refer to the enclosed CD for more details, to view the detailed User's Manual, and for configuration software.

Package Item	Quantity
Wi-Fi Network Video Recorder	1
Power Cable	1
USB Mouse	1
IR Remote	1
HDMI Cable	1
CAT5 Network Cable	1
SATA Cable	1
Quick Start Guide	1

3 NVR

Check the label on the bottom of the NVR and note the model number and the power requirements for this NVR. The label on the rear panel lists the serial number for the NVR. Please provide this serial number when requesting information or service for this device.

3.1 Front Panel

The figure below depicts the NVR front panel.

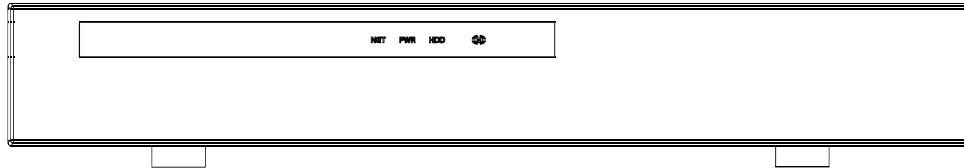


Figure 3-1

Light	Name	Function
NET	Network status	A red light indicates a problem with the network connection.
PWR	Power indicator	A red light indicates the NVR is receiving power.
HDD	HDD status indicator	A red light indicates a problem with the HDD or with the HDD connection.
IR	Remote control receiver	Receives the IR signal from the remote control.

3.2 Rear Panel

The figure below depicts the NVR rear panel (image for reference only).

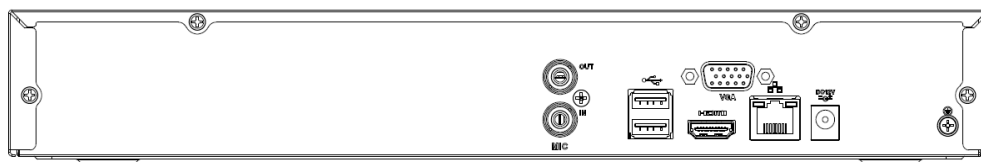


Figure 3-2

Port Name	Connection	Function
	USB 2.0 port	Connection for a USB device (mouse, storage device, DVD/CD, burner, etc.)
	Network port	Network cable connection, 10 M/100 Mbps self-adaptive Ethernet port.
HDMI	High Definition Media Interface	High definition audio and video signal output port (HDMI version 1.4). Transmits uncompressed high definition video and multiple-channel data to the HDMI port of the display device.
VGA	VGA video output port	Connection for an analog video monitor.
	GND	Ground end.
	Power input port	Input DC 12V/2A.
MIC IN	Audio input port	Connection for bidirectional talk input signal. Receives an analog audio signal from a microphone or a pickup.
MIC OUT	Audio output port	Connection for bidirectional talk/sound output signal. Sends an analog audio signal to a speaker.

4 Installing the Hard Drive

The Wi-Fi NVR uses one (1) SATA III Port that can accommodate a 6 TB HDD rated at 7200 RPM or higher. The installation requires a Phillips-head screwdriver.

1. Disconnect the NVR from the power supply, if connected.
2. Loosen the screws on the rear panel and side panels and remove the upper housing.



3. Place four screws in the HDD casing, two on top and two on the bottom. Tighten each screw, turning the screwdriver just three times.



4. Align the four screws in the HDD casing with the holes on the bottom of the NVR. Place the HDD into the NVR housing.



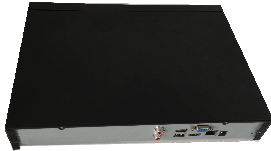
5. Turn the NVR upside down and then firmly tighten each screw to secure the HDD to the NVR.



6. Turn the NVR over and connect the SATA cable and the power cable to the HDD.



7. Align the upper housing with the clip and then place the cover back onto the NVR.



8. Secure the screws in the rear panel and the side panel.



5 NVR Setup

5.1 Making Connections

1. Determine where you will install your system. The NVR should be placed close to the modem or the router.
2. Connect the mouse to the USB port on the rear panel.
3. (Optional) Connect a network cable to the NVR and to a router or a modem.
4. Connect a VGA or HDMI cable to the rear panel and to the display.
5. Connect the power cable to your system and surge protector. The NVR enters the boot mood after power is applied and the NVR defaults to the multiple-window video mode.

5.2 Logging In

The NVR has three built-in accounts for different user levels:

Account	Username	Password
Administrator, local and network	admin	admin
Administrator, local only	888888	888888
Hidden User	default	default

Note:

For security reason, modify the password after the initial login.

Click Enter or left mouse click to access the System Login interface. Type a default Username and Password to access the system.

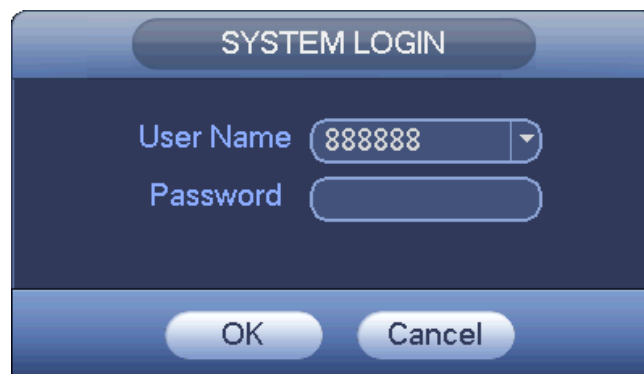


Figure 5-1

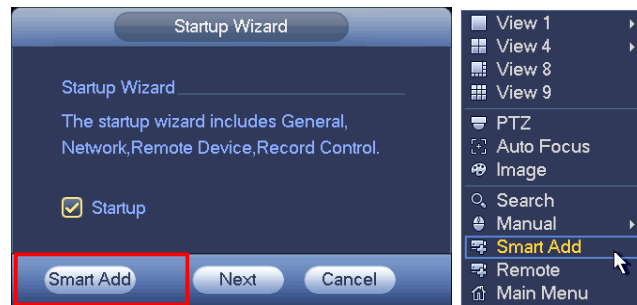
Note:

- Three login failures within 30 minutes causes the system to issue an alarm.
- Five login failures within 30 minutes causes the system to lock the account.

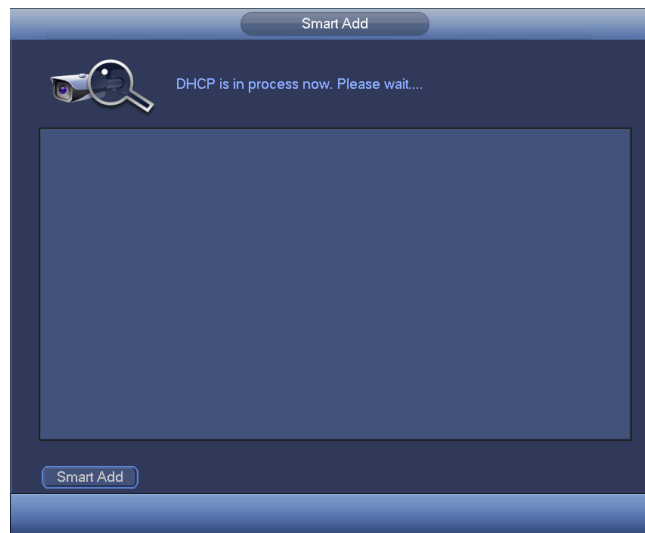
6 Using Smart Add

Smart Add functionality removes the hassle of locating Wi-Fi-enabled cameras on the network and associating these cameras with NVR. Once the Wi-Fi NVR is connected, it automatically scans the Wi-Fi network for cameras and connects the cameras to the NVR to start recording.

1. Access the Smart Add interface from the Startup Wizard, or right-click in the preview interface select Smart Add.

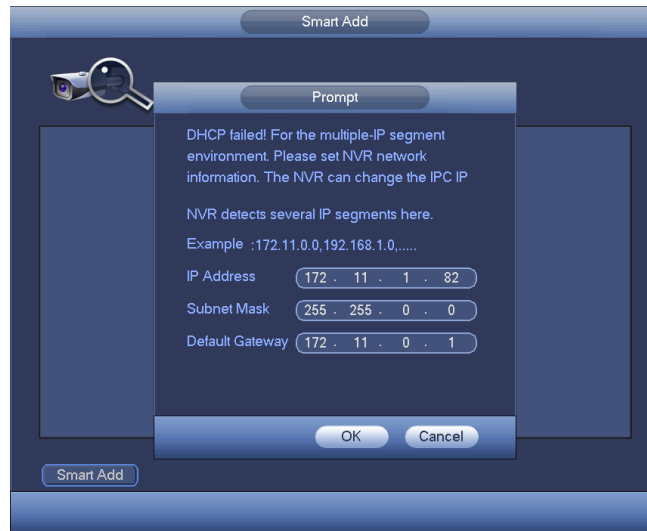


2. Click the Smart Add button. The NVR enables the DHCP function.



If the system detects several IP segments, it prompts for confirmation.

3. Confirm the IP information, if prompted.



4. The system scans the network and adds the associated IP cameras to the NVR channels.



5. Click Yes to confirm the channels and to return to the NVR Main screen.

7 Accessing the NVR via the Web

The NVR can be accessed directly from the Internet Explorer Web browser. The Web Interface allows you to set parameters, configure inputs and outputs, set recording options, view live camera images, and review recorded video.

Note: Different devices may have different Web interfaces, the figures below are for reference only, and may not represent the Web Interface for your device.

1. Launch Internet Explorer and type the NVR's IP address in the address bar. Internet Explorer opens the Login page.
2. Type the Username and Password for the device. Then, click Login.



Figure 7-1



Dahua Technology USA Inc.

23 Hubble, Irvine, CA 92618

Tel: (949) 679-7777

Fax: (949) 679-5760

Email: sales.usa@global.dahuatech.com

Rev 001.001 © 2016 Dahua. All rights reserved. Design and specifications are subject to change without notice.